

- 3KV isolation ("H" option)
- 1KV isolation (standard)
- SMT package
- UL94V-0 package material
- -25°C to +85°C operation
- efficiency up to 82%
- single and dual outputs



The RC series from Wall Industries, Inc. is highly suitable for high speed SMT pick-and-place machine operation. The operating temperature range of -25°C to +85°C is ideal for designers requiring industrial temperature operation. Optional temperature range of -40°C to +85°C is available by adding "I" suffix.

## MODELS

MODEL NUMBER	INPUT VOLTAGE (VDC)	OUTPUT VOLTAGE (VDC)	OUTPUT CURRENT (mA)	EFFICIENCY
RC5S5-200N	5	5	200	68%
RC5S12-83N	5	12	83	77%
RC5D5-100N	5	±5	±100	71%
RC5D9-55N	5	±9	±55	77%
RC5D12-42N	5	±12	±42	79%
RC5D15-33N	5	±15	±33	80%
RC12S5-200N	12	5	200	67%
RC12S12-83N	12	12	83	74%
RC12D5-100N	12	±5	±100	73%
RC12D9-55N	12	±9	±55	79%
RC12D12-42N	12	±12	±42	80%
RC12D15-33N	12	±15	±33	82%
RC5S5-200NH	5	5	200	68%
RC5S12-83NH	5	12	83	77%
RC5D5-100NH	5	±5	±100	71%
RC5D9-55NH	5	±9	±55	77%
RC5D12-42NH	5	±12	±42	79%
RC5D15-33NH	5	±15	±33	80%
RC12S5-200NH	12	5	200	67%
RC12S12-83NH	12	12	83	74%
RC12D5-100NH	12	±5	±100	73%
RC12D9-55NH	12	±9	±55	79%
RC12D12-42NH	12	±12	±42	80%
RC12D15-33NH	12	±15	±33	82%

Add "H" suffix for 3KV I/O isolation.

Add "I" suffix for -40°C to +85°C operating temperature range.

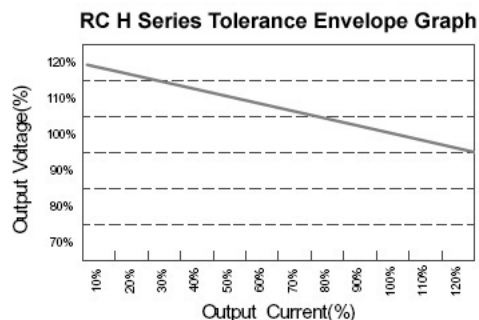
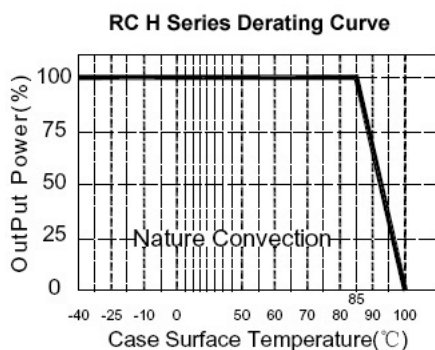
12/26/2007

**SPECIFICATIONS**

*All specifications apply at 25°C unless otherwise noted.*

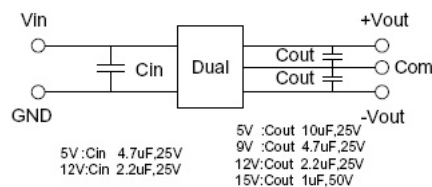
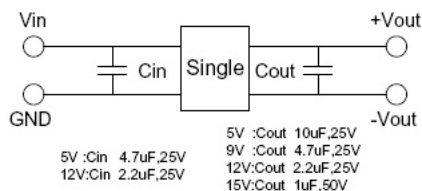
SPECIFICATION	VALUE
<b>INPUT</b>	
Input Voltage Range	±10%
<b>OUTPUT</b>	
Output Current	see model information table
Voltage Accuracy	±5%
Line Regulation (10-100% load)	±1.2% / 1% of Vin max.
Load Regulation (10-100% load)	5, 9 Vout 12 and 8% max. 12, 15Vout 8.5 and 7% max.
Ripple/Noise (20MHz BW)	60 to 110 mV p-p max.
<b>GENERAL</b>	
Efficiency	see table
Isolation Voltage (input to output)	1KVDC
with "H" option	3KVDC
Switching Frequency	115kHz typ.
<b>ENVIRONMENTAL</b>	
Operating Temperature (ambient)	-25°C to +85°C
with "I" option	-40°C to +85°C
Storage Temperature	-40°C to +100°C
Cooling	free air convection
IR Reflow Profile	maximum temperature 260°C ±5°C
<b>PHYSICAL</b>	
Dimensions	see drawing
Weight	< 1.5g
Case Material	plastic UL 94V-0

*due to advances in technology, specifications subject to change without notice.*

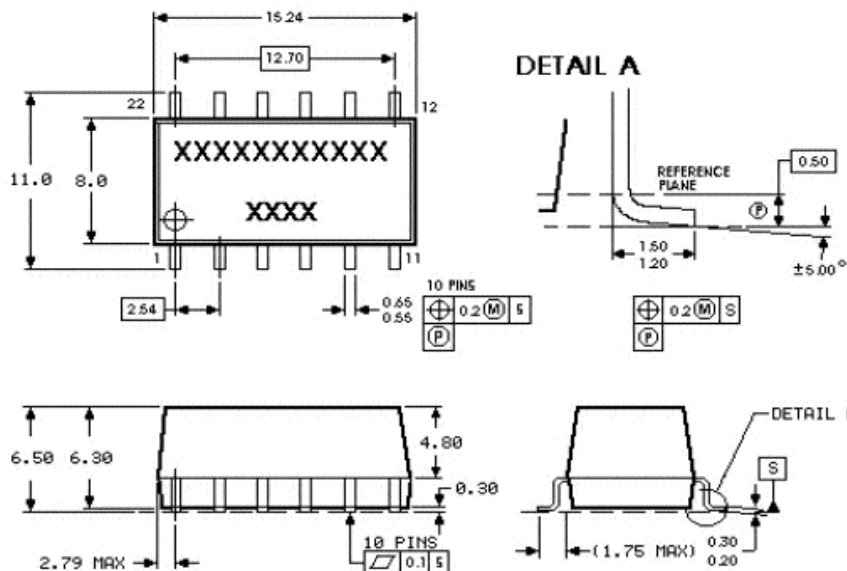


12/26/2007

**RECOMMENDED TEST CIRCUIT**



**MARKINGS AND DIMENSIONS**

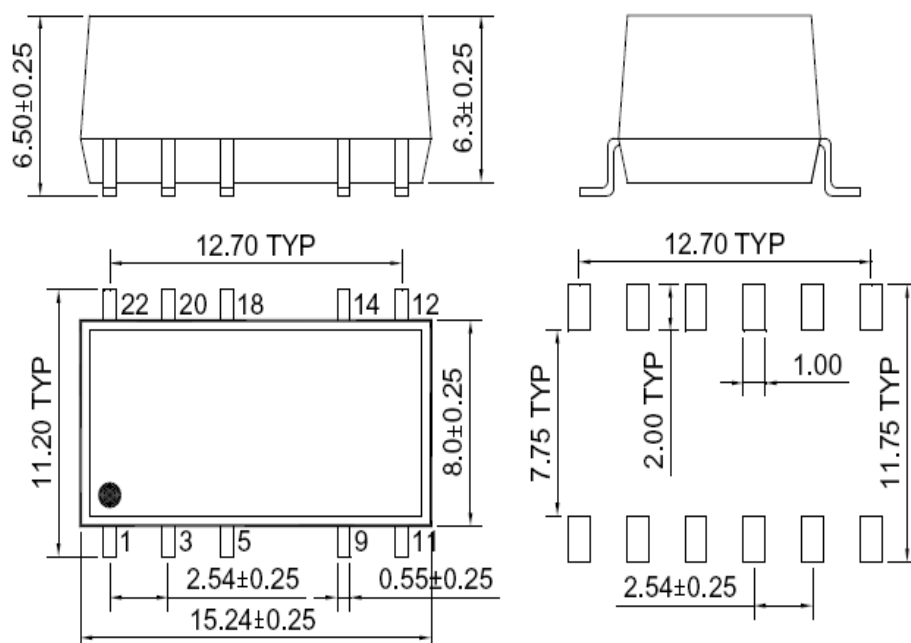


**PIN CONNECTIONS**

PIN	SINGLE	DUAL
1	-INPUT	-INPUT
3	+INPUT	+INPUT
5	NC	NC
9	-OUTPUT	COMMON
11	NC	-OUTPUT
12	NC	NC
14	+OUTPUT	+OUTPUT
18	NC	NC
20	NC	NC
22	NC	NC

**"H" Option 3KV Isolation:**

**MARKINGS AND DIMENSIONS**



**PIN CONNECTIONS**

PIN	SINGLE	DUAL
1	-INPUT	-INPUT
3	+INPUT	+INPUT
5	NC	NC
9	-OUTPUT	COMMON
11	NC	-OUTPUT
12	NC	NC
14	+OUTPUT	+OUTPUT
18	NC	NC
20	NC	NC
22	NC	NC

12/26/2007

UNIT: mm TYP tolerances are ±0.5