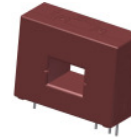


K-No.: 25256

50 A Current Sensor Module for 5V-Supply Voltage

For electronic current measurement:
DC, AC, pulsed, mixed ...,
with a galvanic isolation between
primary circuit (high power) and
secondary circuit (electronic circuit)



Date: 05.11.2012

Customer: Standard type

Customers Part no.:

Page 1 of 2

Description

- Closed loop (compensation)
Current Sensor with magnetic
field probe
- Printed circuit board mounting
- Casing and materials UL-listed

Characteristics

- Excellent accuracy
- Very low offset current
- Very low temperature dependency and offset
current drift
- Very low hysteresis of offset current
- short response time
- Wide frequency bandwidth
- Compact design
- Reduced offset ripple

Applications

Mainly used for stationary operation in industrial
applications:

- AC variable speed drives and servo motor
drives
- Static converters for DC motor drives
- Battery supplied applications
- Switched Mode Power Supplies (SMPS)
- Power Supplies for welding applications
- Uninterruptible Power Supplies (UPS)

Electrical data – Ratings

		min.	typ.	max.	Einheit
I_{PN}	Primary nominal r.m.s. current		50		A
V_{out}	Output voltage @ I_P			$V_{Ref} \pm (0.625 \cdot I_P / I_{PN})$	V
V_{out}	Output voltage @ $I_P=0$, $T_A=25^\circ\text{C}$			$V_{Ref} \pm 0.0025$	V
V_{Ref}	Reference voltage external	0		4	V
V_{Ref}	Reference voltage internal			2.5 ± 0.005	V
K_N	Turns ratio			1 : 1000	

Accuracy – Dynamic performance data

		min.	typ.	max.	Unit
$I_{P,max}$	Max. measuring range	± 172			
X	Accuracy @ I_{PN} , $T_A=25^\circ\text{C}$			1	%
ε_L	Linearity			0.1	%
$V_{out} -2,5V$	Offset voltage @ $I_P=0$, $T_A=25^\circ\text{C}$			$\pm 2,5$	mV
$\Delta V_{out} / 2,5V / \Delta T$	Temperature drift of V_{out} @ $I_P=0$, $T_A=-40...85^\circ\text{C}$		3	10	ppm/K
t_r	Response time @ 80% von I_{PN}		1		μs
$\Delta t (I_{P,max})$	Delay time at $di/dt = 100 \text{ A}/\mu\text{s}$		1		μs
f	Frequency bandwidth	DC...100			kHz

General data

		min.	typ.	max.	Unit
T_A	Ambient operating temperature	-40		+85	$^\circ\text{C}$
T_S	Ambient storage temperature	-40		+85	$^\circ\text{C}$
m	Mass		18		g
V_C	Supply voltage	4.75	5	5.25	V
I_{Co}	Current consumption		16		mA
	Constructed and manufactured and tested in accordance with EN 61800-5-1 (Primary to Secondary) Reinforced insulation, Insulation material group 1, Pollution degree 2				
S_{clear}	Clearance (component without solder pad)	12			mm
S_{creep}	Creepage (component without solder pad)	12			mm
V_{sys}	System voltage	overvoltage category 3	RMS	600	V
V_{work}	Working voltage	(tabel 7 acc. to EN61800-5-1) overvoltage category 2	RMS	1000	V
U_{PD}	Rated discharge voltage	peak value		1225	V

Maximal continuous and peak currents at defined temperatures

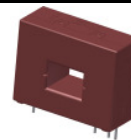
T_A	50 $^\circ\text{C}$	70 $^\circ\text{C}$	85 $^\circ\text{C}$	105 $^\circ\text{C}$
I_P	150 A	110 A	100 A	50 A
$I_{P,max}$	172 A	172 A	172 A	172 A

Date	Name	Issue	Amendment				
05.11.12	Le	81	Insignificant: Date changed.				
13.02.09	Le	81	Insignificant: Date changed.				
Hrsg.: KB-E editor	Bearb.: Le designer			KB-PM IA: KRe. check		freig.: HS released	

K-No.: 25256

50 A Current Sensor Module for 5V-Supply Voltage

For electronic current measurement:
DC, AC, pulsed, mixed ...,
with a galvanic isolation between
primary circuit (high power) and
secondary circuit (electronic circuit)



Date: 05.11.2012

Customer: Standard type

Customers Part no.:

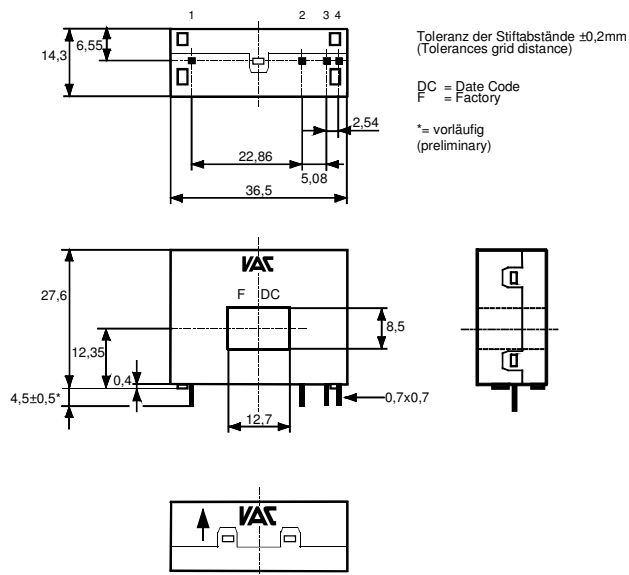
Page 2 of 2

Mechanical outline (mm):

General tolerances DIN ISO 2768-c

Connections:

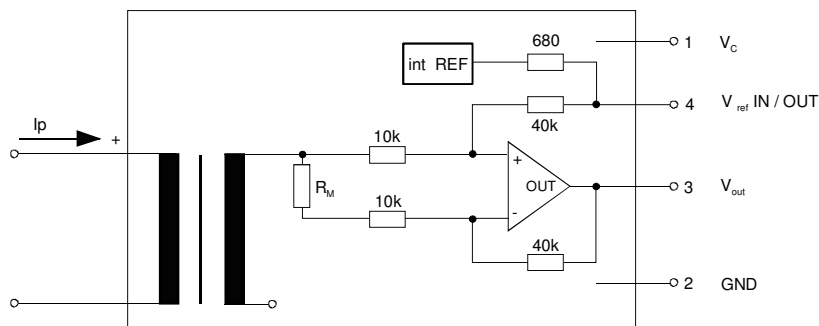
1..4 = 0.7 x 0.7mm



Marking:


 4646X160
 F DC

Schematic diagram



Additional information is obtainable on request.
 Temperature of the primary conductor should not exceed 110 °C.
 This specification is no declaration of warranty acc. BGB §443 dar.

Hrsg.: KB-E
 editor

Bearb.: Le
 designer

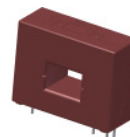
KB-PM IA: KRe.
 check

freig.: HS
 released

K-No.: 25256

50 A Current Sensor Module for 5V-Supply Voltage

For the electronic measurement of currents:
DC, AC, pulsed, mixed ...,
with a galvanic isolation between
the primary circuit (high power)
and the secondary circuit (electronic circuit)



Date: 05.11.2012

Customer:

Customers Part No.:

Page 1 of 2

Electrical Data

		min.	typ.	max.	Unit
V_{Ctot}	Maximum supply voltage (without function)			6	V
I_C	Supply Current with primary current	16mA	$+I_p \cdot K_N + V_{out}/R_L$		mA
$I_{out,SC}$	Short circuit output current		± 20		mA
R_S	Secondary coil resistance @ $T_A = 85^\circ C$			14	Ω
$R_{i,Ref}$	Internal resistance of Reference input		670		Ω
$R_{i,(V_{out})}$	Output resistance of V_{out}			1	Ω
R_L	External recommended resistance of V_{out}	1			k Ω
C_L	External recommended capacitance of V_{out}			500	pF
$\Delta X_T/\Delta T$	Temperature drift of X @ $T_A = -40 \dots +85^\circ C$			40	ppm/K
$\Delta V_0 = \Delta(V_{out} - V_{Ref})$	Sum of any offset drift including:		2	6	mV
V_{0t}	Long term drift of V_0		1		mV
V_{0T}	Temperature drift von V_0 @ $T_A = -40 \dots +85^\circ C$		1		mV
V_{0H}	Hystereses of V_{out} @ $I_P = 0$ (after an overload of $10 \times I_{PN}$)			1.5	mV
$\Delta V_0/\Delta V_C$	Supply voltage rejection ratio			1	mV/V
V_{oss}	Offsetripple (with 1 MHz- filter first order)			25	mV
V_{oss}	Offsetripple (with 100 kHz- filter first order)		2.5	6	mV
V_{oss}	Offsetripple (with 20 kHz- filter first order)		0.7	1.5	mV
C_k	Maximum possible coupling capacity (primary – secondary)		6		pF
Mechanical stress according to M3209/3					
Settings: 10 – 2000 Hz, 1 min/Decade, 2 hours					

Inspection (Measurement after temperature balance of the samples at room temperature)

$V_{out} (I_P = I_{PN})$	(V)	M3011/6:	Output voltage vs. internal reference ($I_P = 50A$, 40-80Hz)	$625 \pm 1\%$	mV
$V_{out} - V_{Ref} (I_P = 0)$	(V)	M3226:	Offset voltage	± 0.0025	V
V_d	(V)	M3014:	Test voltage, RMS, 1 s pin 1-4 to inner hole	1.8	kV
V_e	(AQL 1/S4)		Partial discharge voltage acc.M3024 (RMS) with V_{vor} (RMS)	1300 1625	V V

Type Testing (Pin 1-4 to inner hole)

Designed according standard EN 50178 with insulation material group 1

V_W			HV transient test according to M3064 (1,2 μs / 50 μs -wave form)	8	kV
V_d			Testing voltage to M3014	(5 s)	kV
V_e			Partial discharge voltage acc.M3024 (RMS) with V_{vor} (RMS)	1300 1625	V V

Applicable documents

Current direction: A positive output current appears at point I_S , by primary current in direction of the arrow.
Housing and bobbin material UL-listed: Flammability class 94V-0.
Enclosures according to IEC529: IP50.

Datum	Name	Index	Änderung
05.11.12	Le	81	Typo: Type testing V_d , Testing voltage changed from M3924 into M3014. Lapidary change.
13.02.09	Le	81	Write error. Offsetripple to high, values reduced. Insignificant.
Hrsg.: KB-E editor	Bearb.: Le designer		KB-PM IA: KRe. check
			freig.: HS released

Weitergabe sowie Vervielfältigung dieser Unterlage, Verwertung und Mitteilung ihres Inhalts nicht gestattet, soweit nicht ausdrücklich zugestanden. Zuwiderhandlungen verpflichten zu Schadenersatz. Alle Rechte für den Fall der Patenterteilung oder GM-Eintragung vorbehalten

Copying of this document, disclosing it to third parties or using the contents there for any purposes without express written authorization by use illegally forbidden.
Any offenders are liable to pay all relevant damages.

K-No.: 25256

50 A Current Sensor Module for 5V-Supply Voltage

For the electronic measurement of currents:
DC, AC, pulsed, mixed ...,
with a galvanic isolation between
the primary circuit (high power)
and the secondary circuit (electronic circuit)



Date: 05.11.2012

Customer:

Customers Part No.:

Page 2 of 2

Explanation of several of the terms used in the tablets (in alphabetical order)

t_r: Response time (describe the dynamic performance for the specified measurement range), measured as delay time at $I_P = 0.8 \cdot I_{PN}$ between a rectangular current and the output voltage $V_{out}(I_P)$

Δt (I_{Pmax}): Delay time (describe the dynamic performance for the rapid current pulse rate e.g short circuit current) measured between I_{Pmax} and the output voltage $V_{out}(I_{Pmax})$ with a primary current rise of $di_P/dt \geq 100 \text{ A/}\mu\text{s}$.

U_{PD} Rated discharge voltage (recurring peak voltage separated by the insulation) proved with a sinusoidal voltage V_e
 $U_{PD} = \sqrt{2} \cdot V_e / 1.5$

V_{vor} Defined voltage is the RMS value of a sinusoidal voltage with peak value of $1.875 \cdot U_{PD}$ required for partial discharge test in IEC 61800-5-1
 $V_{vor} = 1.875 \cdot U_{PD} / \sqrt{2}$

V_{sys} System voltage RMS value of rated voltage according to IEC 61800-5-1

V_{work} Working voltage voltage according to IEC 61800-5-1 which occurs by design in a circuit or across insulation

V₀: Offset voltage between V_{out} and the rated reference voltage of $V_{ref} = 2.5V$.
 $V_0 = V_{out}(0) - 2.5V$

V_{0H}: Zero variation of V_0 after overloading with a DC of tenfold the rated value

V_{0t}: Long term drift of V_0 after 100 temperature cycles in the range -40 bis 85 °C.

X: Permissible measurement error in the final inspection at RT, defined by

$$X = 100 \cdot \left| \frac{V_{out}(I_{PN}) - V_{out}(0)}{0,625V} - 1 \right| \%$$

X_{ges}(I_{PN}): Permissible measurement error including any drifts over the temperature range by the current measurement I_{PN}

$$X_{ges} = 100 \cdot \left| \frac{V_{out}(I_{PN}) - 2,5V}{0,625V} - 1 \right| \% \quad \text{or} \quad X_{ges} = 100 \cdot \left| \frac{V_{out}(I_{PN}) - V_{ref}}{0,625V} - 1 \right| \%$$

ε_L: Linearity fault defined by $\epsilon_L = 100 \cdot \left| \frac{I_P}{I_{PN}} - \frac{V_{out}(I_P) - V_{out}(0)}{V_{out}(I_{PN}) - V_{out}(0)} \right| \%$

This "Additional information" is no declaration of warranty according BGB §443.

Hrsg.: KB-E
editor

Bearb.: Le
designer

KB-PM IA: KRe.
check

freig.: HS
released