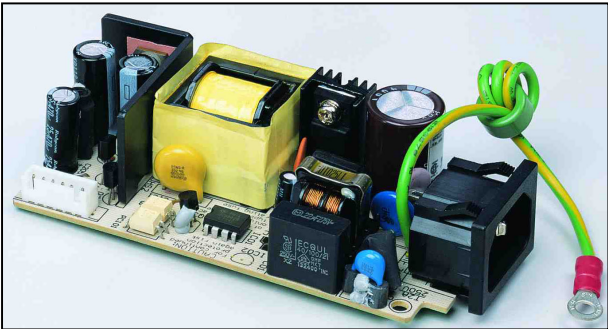


# UP0301B-( ) ( ) (I) ( ) SERIES

## 26 - 48 Watt AC/DC Open Frame

- ◆ Universal Input 90 to 264 VAC
- ◆ EMI Meets FCC/CISPR 22 Class B
- ◆ Continuous Short Circuit Protection
- ◆ Designed to Meets UL, CSA, TUV Safety Standards



### SPECIFICATIONS

All specifications are typical at nominal line, full load and 25°C unless otherwise noted.

### INPUT SPECIFICATIONS

Input Voltage Range ..... 90-264VAC  
Input Frequency ..... 47-63 Hz  
Inrush Current ..... 40A max.(Cold Start)

### GENERAL SPECIFICATIONS

Hold-up Time ..... 10mS typ.  
Leakage Current ..... 3mA max.  
Short Circuit Protection ..... Continuous  
Continuous Output Power ..... 30W max.  
Hi-pot Isolation: Input / Output ..... 4242 VDC

### ENVIRONMENTAL SPECIFICATIONS

Operating Temperature Range ..... 0°C to 70°C  
Derating 50°C to 70°C ..... 2%/°C  
Temperature Coefficient ..... ±0.02%/°C  
Storage Temperature Range ..... -40°C to +85°C  
Humidity, Non-Condensing ..... 0 to 95% RH  
Cooling ..... Free- Air Convection  
EMI ..... Meets FCC/CISPR 22 Class B Specification



**UNIVERSAL  
MICROELECTRONICS**

3,27TH RD., TAICHUNG INDUSTRIAL PARK,  
TAICHUNG, TAIWAN, R.O.C.  
TEL: 886-4-23590096 FAX: 886-4-23590129

## OUTPUT SPECIFICATIONS

Model Number	Output Voltage (Volts)	Output Current (Amps)		Max Power (Watt)	Efficiency (typ.)	Ripple <sup>1</sup> P-P (mV)	Total Regulation <sup>2</sup>
		Min.	Rated				
UP0301B-03(I)	3.3	0	8	26.4	70%	50	±3%
UP0301B-05(I)	5	0	6	30	72%	50	±5%
UP0481A-01(I) <sup>3</sup>	48	0	1	48	82%	480	±4%

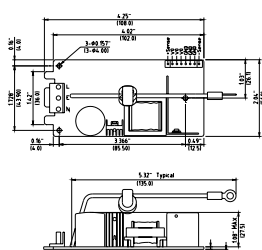
### NOTES:

1. Add a 0.1uF ceramic capacitor and a 10uF E.L. capacitor to the output connector. Peak to peak and RMS metering equipment shall have a 20 MHz response with probes and cables maintaining frequency response from 200 Hz to 100MHz bandwidth. Output ripple and spikes are measured directly at the output terminals of the power supply without the use of the probe ground clip.
2. Total regulation is defined as the static output regulation at 25°C, including initial tolerance, line voltage and load current within stated limits.
3. Safety Pending.

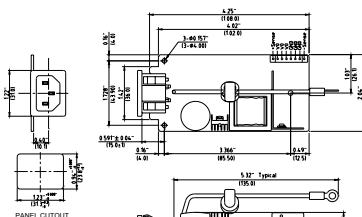
## PHYSICAL SPECIFICATIONS

Weight: 130g

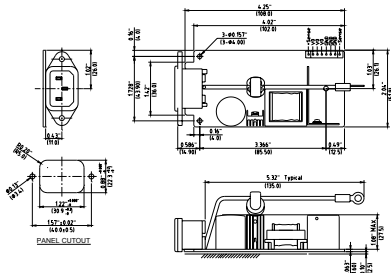
UP0301B-( ) ( )



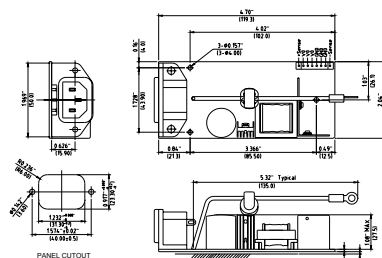
UP0301B-( ) ( ) I



UP0301B-( ) ( ) I1



UP0301B-( ) ( ) I2



### NOTE:

1. All dimensions in inches (mm).
2. Tolerance .XX=±0.05, .XXX=±0.020

UP0301B-XX	UP0301B-XXI
CN1	AC INLET (C14)
Molex 09-65-2058 with second and fourth pin removed	INALWAYS-0711-2 OR RONG FENG SS-120-PCB PCB mounting
	INALWAYS-0707-1-CP PCB mounting
Molex mating connector Molex 5195 series housing with 5194 series crimp terminals	INALWAYS-0714 PCB mounting

CN2 output connector Molex 07280-0800

Model	
Pin	UP0301B-XX(I)X
1	+Sense
2	Vo
3	Vo
4	Vo
5	Common
6	Common
7	Common
8	-Sense
Molex mating connector Molex 67261 series housing with 67262 series crimp terminals Recommend: 20 AWG wire used	



**UNIVERSAL  
MICROELECTRONICS**

3,27TH RD., TAICHUNG INDUSTRIAL PARK,  
TAICHUNG, TAIWAN, R.O.C.  
TEL: 886-4-23590096 FAX: 886-4-23590129