

UP020(A-)(I)(H) SERIES

20 Watt AC/DC Switching Modules

- Small Size
- Universal Input 90 to 264 VAC
- Conductive EMI Meets FCC/CISPR 22 Class B
- MTBF 390Khrs
- Designed to Meets UL,CSA,TUV Safety Standards

SPECIFICATIONS

All specifications are typical at nominal line, full load and 25°C unless otherwise noted.

INPUT SPECIFICATIONS

Input Voltage Range 90-264VAC
Input Frequency 47-63 Hz
Inrush Current 30A max.(Cold Start)
Line Regulation¹ ±1%

GENERAL SPECIFICATIONS

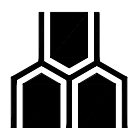
Hold-up Time 16mS
t y p
Short Circuit Protection Continuous
Overvoltage Protection 5VDC Output
O n l y
Hi-pot Isolation: Input/ Output 4242 VDC

ENVIRONMENTAL SPECIFICATIONS

Operating Temperature Range 0°C to 50°C
Derating 40°C to 50°C
2 % / ° C
Temperature Coefficient ±0.02%/°C
Storage Temperature Range -40°C to
+ 8 5 ° C
Humidity, Non-Condensing 0 to 95% RH
Cooling Free- Air Convection
EMI Filter(on Board):
Conducted Meets FCC/CISPR 22 Class B
Specification

NOTE:

1. Measured from 90 to 264 VAC.



**UNIVERSAL
MICROELECTRONICS**

3,27TH RD., TAICHUNG INDUSTRIAL PARK,
TAICHUNG, TAIWAN, R.O.C.
TEL: 886-4-23590096 FAX: 886-4-23590129

OUTPUT SPECIFICATIONS

Model Number	Output Voltage ¹ (Volts)	Output Current (Amps)	Ripple ² P-P (mV)	Efficiency (%)	Load Regulation ³	Case
					Load Change 25-100%	
UP0201A-01I(Y)(Z)	5	4000	50	73	±1%	I1
UP0201A-02I(Y)(Z)	12	1700	120	73	±1%	I1
UP0201A-03I(Y)(Z)	15	1400	150	73	±1%	I1
UP0202A-01I(Y)(Z)	± 5	±2000	50	73	±5%	I1
UP0202A-02I(Y)(Z)	±12	± 850	120	73	±3%	I1
UP0202A-03I(Y)(Z)	±15	± 700	150	73	±3%	I1
UP0201A-01H(Y)(Z)	5	4000	50	73	±1%	H
UP0201A-02H(Y)(Z)	12	1700	120	73	±1%	H
UP0201A-03H(Y)(Z)	15	1400	150	73	±1%	H
UP0202A-01H(Y)(Z)	± 5	±2000	50	73	±5%	H
UP0202A-02H(Y)(Z)	±12	± 850	120	73	±3%	H
UP0202A-03H(Y)(Z)	±15	± 700	150	73	±3%	H

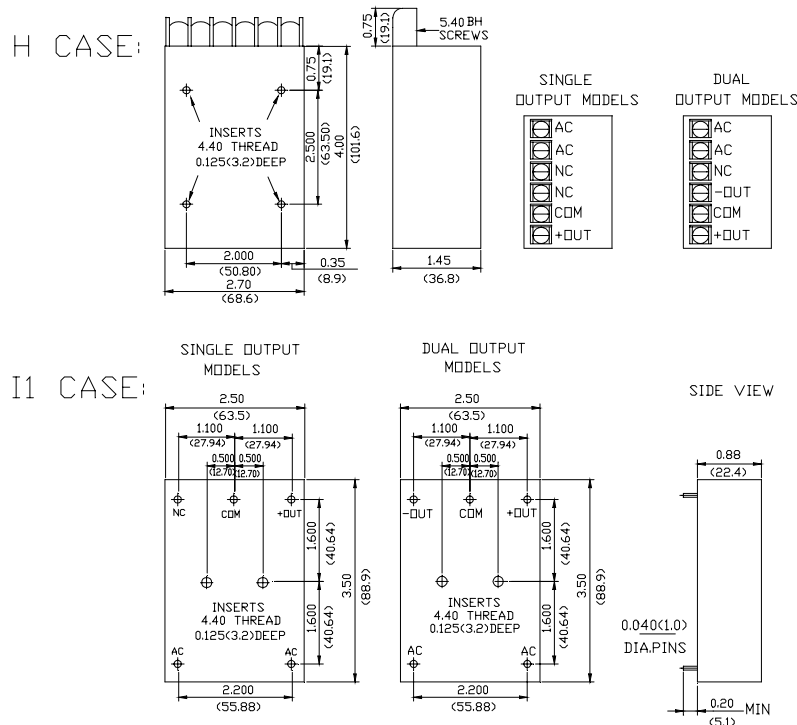
NOTES:

1. The single output voltage is set to $\pm 1\%$, dual output voltage is set to $\pm 2\%$ at rated load. Voltage balance for dual output at rated load is 2% max..
2. Add a 0.1uF ceramic capacitor and a 10uF E.L. capacitor to the output cable. Peak to peak and RMS metering equipment shall have a 20 MHz response with probes and cables maintaining frequency response from 200 Hz to 100MHz band width. Output ripple and spikes are measured directly at the output terminals of the power supply without the use of the probe ground clip.
3. Load regulation is measured at 115VAC or 230VAC input, while the output being measured is loaded 25% to 100% of rated load. All other outputs at rated load.
4. The insert thread is M3*0.5 by adding suffix No. "Y".
5. The insert thread is #4-40 by adding suffix No. "Z".

PHYSICAL SPECIFICATIONS

Weight : Case I1:200g, Case H:420g

Case Material : Non conductive black plastic



**UNIVERSAL
MICROELECTRONICS**

3,27TH RD., TAICHUNG INDUSTRIAL PARK,
TAICHUNG, TAIWAN, R.O.C.

TEL: 886-4-23590096 FAX: 886-4-23590129