

### WDU9-300-R

#### Electrical Specifications (@25C)

1. Primary Rating: 120V 60Hz 5W
2. Primary Excitation Current: 50mA Max
3. Secondary Rating: 9VDC  $\pm$  5%, 300mADC
4. Secondary No-Load Rating: 13.70VDC Ref.
5. Output Ripple Voltage: 1210mV Max
6. Operating Temperature Range: -10 Deg C to +40 Deg C
7. Temperature Rise: 75 Deg C Max at rated load  
50 Deg C Max on enclosure surface

#### Mechanical Parameters:

Case Type: Thermoplastic molded enclosure.  
Output Cord: 24 AWG, 6 Ft. Long Min.

Agency File:

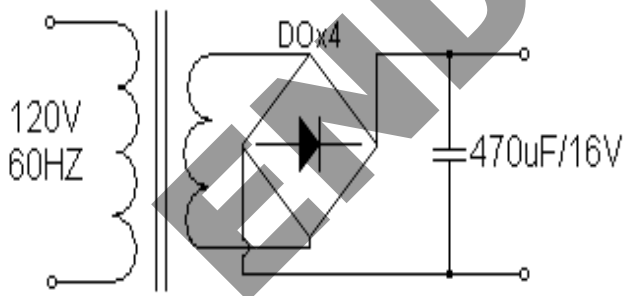
UL/CUL: File E245587, UL 1310

A. Dimensions:

H	W	D
60	43	39

\*Units: In Millimeter

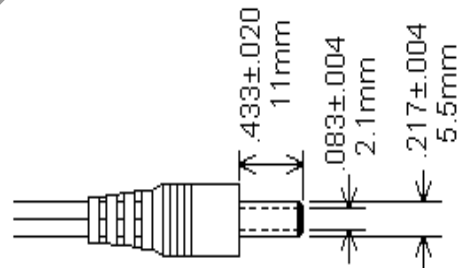
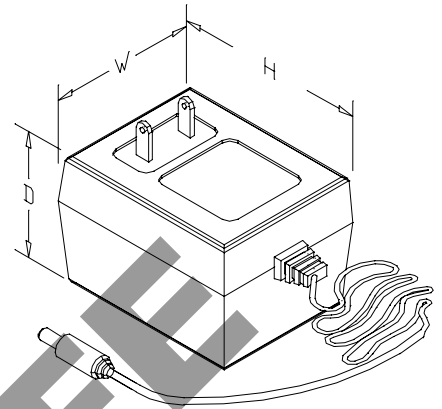
B. Schematic:



Technical Note: 1. Inside (tip)-negative (-), outside-positive (+)

**RoHS Compliance:** As of manufacturing date February 2005, all standard products meet the requirements of 2011/65/EU, known as the RoHS initiative.

\* Upon printing, this document is considered "uncontrolled". Please contact Triad Magnetics' website for the most current version.



#### NAMEPLATE MARKING

