

TOSHIBA

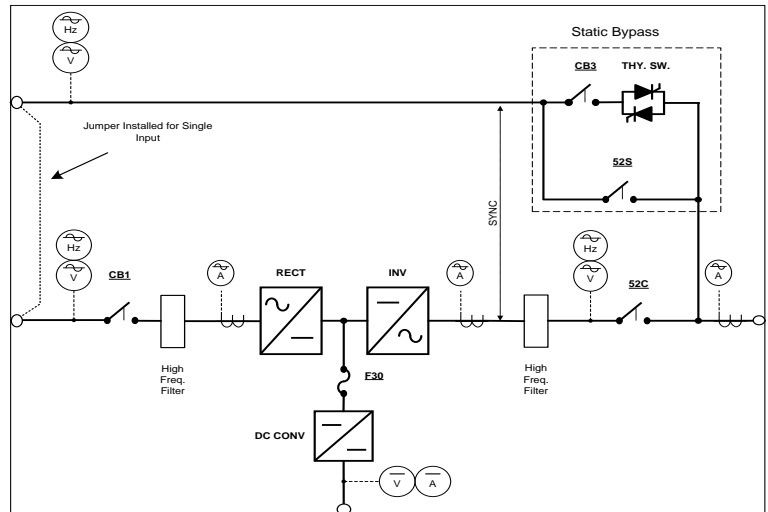
Leading Innovation >>>

750 kVA

G9000 Series

Single/Parallel/Redundant

Three Phase UPS



Features at-a-glance

- | | | |
|---|---|---|
| <ul style="list-style-type: none"> • Single/Parallel in one box for modular design • Parallel up to eight units • Redundant Circuitry in each UPS for reliability • True Online, Double-Conversion Technology • Dual Input Design (Alternate Input for bypass) • Hybrid Static Bypass Switch <ul style="list-style-type: none"> - Thyristor + Contactor for highest reliability | <ul style="list-style-type: none"> • LCD Touch screen Graphic Display • IGBT Inverter – Next Generation CSTBT (Carrier Stored Trench Gate Bipolar Transistor) Technology • All Digital Signal Processor (DSP) software logic using 12 bit processor • Front Access for Installation and Maintenance • Bottom, Top or Left Side Access for Power cables | <ul style="list-style-type: none"> • Battery Temperature Compensation • Generator Compatible 1.1:1 • Monitoring Options <ul style="list-style-type: none"> - RemotEye II (SNMP/Web) - MODBUS, BACnet, Metasys adapters - Memory Card w/software - Programmable Dry Contacts |
|---|---|---|

G9000 750 kVA UPS Specifications

Input Specifications		Output Specifications: 750 kVA/750 kW (1.0PF)	
Voltage range:	480V, 3Φ, 3W	Voltage:	480V, 3Φ, 3W
Voltage Range:	+15% -20%	Voltage regulation:	+/- 1% Balanced load +/- 2% Unbalanced load
Frequency range:	60Hz, +/- 10%	Freq. regulation:	+/- 0.01% (Free running)
Power factor:	>0.99	Transient response:	+/-2% at 100% load step (recovery in less than 20 ms)
Input current THD:	less than 3% at 100% load	Voltage Distortion:	Less than 2% for 100% linear load Less than 5% for 100% non-linear load
Surge protection:	Up to 5kA/10kV; Meets EN61643-11	Freq. sync range:	+/- 1% to +/- 5.0% (in 1% increments)
Battery Specifications		Freq. slew rate:	1 Hz/s to 5 Hz/s (in 1 Hz/s increments)
Cabinets or Racks with DC Breaker		Voltage adjustment:	+/-5% (user selectable)
Battery type:	Sealed Valve Regulated Lead-Acid (VRLA) or Flooded Batteries standard	Overload capacity:	150% for 1 minute 125% for 10 minutes
Recharge time:	10 x discharge time to 95% capacity	Crest Factor:	2.3 : 1
DC Link:	480VDC Nominal		

G9000 750 kVA UPS Specifications (cont.)

Bypass Specifications Voltage: 480V, 3Φ, 3W Overload capacity: 500% for 1 cycle	Standards UL/CUL 1778 Listed ISO 9001, ISO 14001 ANSI C62.41 (IEEE 587) All cabinets provide for seismic zone 4 mounting IEC 62040-2 Cat. C3
Environmental Specifications Ambient temperature: 0C to +40C Relative humidity: 5%-95% Non-Condensing Altitude: 0 to 7380 feet without derating Audible noise: Less than 73 dBA at 1 meter	Options Matching Maintenance Bypass Cabinets and Battery Cabinets RemotEye II™ Network Adapter MODBUS/BACnet/Metasys Adapter Extended Warranty and Maintenance Agreements (Contact Factory for Details)

Model # : T90S3S75KS6XSN

Input			Output		
Input Voltage	Volts	480	Output Voltage	Volts	480
Input Voltage Range		+15% to -20%	Frequency	Hz	60
Minimum	Volts	384	AC Output Current		
Maximum	Volts	552	Nominal Amps	Amps	902
Frequency	Hz	60	10 Minutes Max.	Amps	1128
AC Input Current			DC Link		
Nominal Amps	Amps	939	Float Voltage	Volts	545
Maximum Amps	Amps	1010	End of Discharge	Volts	400
Bypass			Charger	Amps	187
Bypass Input	Volts	480	Environmental		
Nominal Amps	Amps	902	Efficiency	%	97.0
1 Cycle Max.	Amps	4510	Full Load Heat Dissipation		
			kBTU/Hr.		79.1
			kW Loss		23.2

(1) Maximum Amps is limited to the sum of the load current plus battery recharge current, or 108% of Nominal Amps, whichever is less.