

4515DO-DS3BS002DP

✓ ACTIVE

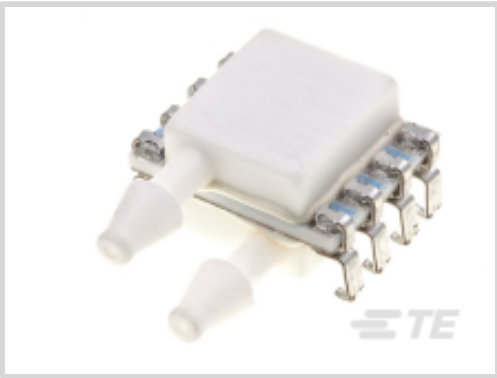
MEAS | MEAS MS4515DO

TE Internal #: 4515DO-DS3BS002DP  
Digital Pressure and Altimeter Sensor Modules, Differential, 2  
inH2O, 14 bit ADC, ±0.25% Span Pressure Accuracy, MEAS  
MS4515DO

[View on TE.com >](#)



Sensors > Pressure Sensors > Board Mount Pressure Sensors > PCB MOUNTED DIGITAL PRESSURE SENSOR



Pressure Sensor Type: **Digital Pressure and Altimeter Sensor Modules**  
Pressure Type: **Differential**  
Pressure: **[ 2 inH2O ]**  
Proof Pressure Range: **300 psi**  
Output Signal Type: **14 bit ADC**

[All PCB MOUNTED DIGITAL PRESSURE SENSOR \(0\)](#)

Features

Dimensions

Product Width	17.4 mm[.685 in]
Product Length	12.7 mm[.5 in]
Product Height	7.2 mm[.283 in]

Packaging Features

Sensor Port Configuration	Dual Sideport
---------------------------	---------------

Electrical Characteristics

Supply Current	3 mA
Supply Voltage Range	3.3 V

Operation/Application

Output Interface	I²C or SPI
	2 inH2O
Proof Pressure Range	300 psi
Output Signal Type	14 bit ADC
Pressure Accuracy	±0.25% Span

Product Type Features

--	--

Leg Style	Through Hole
Pressure Sensor Type	Digital Pressure and Altimeter Sensor Modules
Pressure Type	Differential

Usage Conditions

Operating Temperature Range	-10 – 85 °C[14 – 185 °F]
-----------------------------	--------------------------

Other

Sensor Options	No Option
EU RoHS Compliance	Compliant
EU ELV Compliance	Compliant

Product Compliance

For compliance documentation, visit the product page on TE.com>

EU RoHS Directive 2011/65/EU	Compliant
EU ELV Directive 2000/53/EC	Compliant
China RoHS 2 Directive MIIT Order No 32, 2016	No Restricted Materials Above Threshold
EU REACH Regulation (EC) No. 1907/2006	Current ECHA Candidate List: JUNE 2024 (241) Candidate List Declared Against: JAN 2024 (240) Does not contain REACH SVHC
Halogen Content	Not Yet Reviewed for halogen content
Solder Process Capability	Not reviewed for solder process capability

Product Compliance Disclaimer

This information is provided based on reasonable inquiry of our suppliers and represents our current actual knowledge based on the information they provided. This information is subject to change. The part numbers that TE has identified as EU RoHS compliant have a maximum concentration of 0.1% by weight in homogenous materials for lead, hexavalent chromium, mercury, PBB, PBDE, DBP, BBP, DEHP, DIBP, and 0.01% for cadmium, or qualify for an exemption to these limits as defined in the Annexes of Directive 2011/65/EU (RoHS2). Finished electrical and electronic equipment products will be CE marked as required by Directive 2011/65/EU. Components may not be CE marked. Additionally, the part numbers that TE has identified as EU ELV compliant have a maximum concentration of 0.1% by weight in homogenous materials for lead, hexavalent chromium, and mercury, and 0.01% for cadmium, or qualify for an exemption to these limits as defined in the Annexes of Directive 2000/53/EC (ELV). Regarding the REACH Regulation, the information TE provides on SVHC in articles for this part number is based on the latest European Chemicals Agency (ECHA) ‘Guidance on requirements for substances in articles’ posted at this URL: <https://echa.europa.eu/guidance-documents/guidance-on-reach>

Compatible Parts



TE Part # 4515DO-DS3AI002DP  
[PRESS XDCR,DIGITAL,INH20 RANGE](#)

Also in the Series | [MEAS MS4515DO](#)

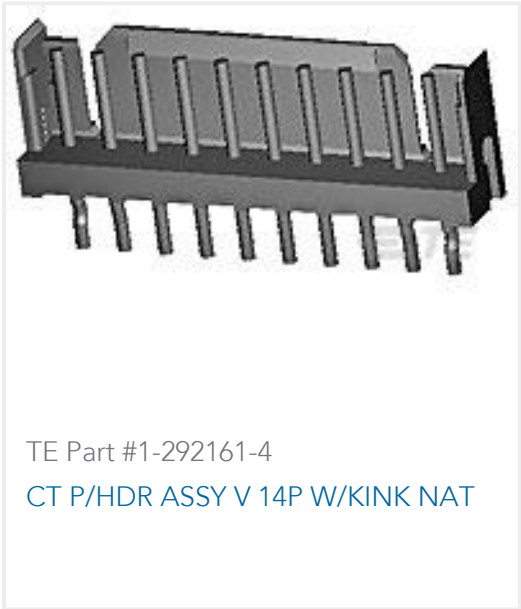


[Board Mount Pressure Sensors\(35\)](#)

Customers Also Bought



TE Part #DTF13-6P  
[HDR, 6P, BLK, RA, SN/NI/CU](#)



TE Part #1-292161-4  
[CT P/HDR ASSY V 14P W/KINK NAT](#)



TE Part #5-1746530-4  
[SEMI-HARD TRAY DDR2 SODIMM 6.5 H STD\(HSG\)](#)

Document

CAD Files

Customer View Model

[ENG\\_CVM\\_CVM\\_4515DO-DS3BS002DP\\_D.3d\\_igs.zip](#)

English

Customer View Model

[ENG\\_CVM\\_CVM\\_4515DO-DS3BS002DP\\_D.3d\\_stp.zip](#)

English

Customer View Model

[ENG\\_CVM\\_CVM\\_4515DO-DS3BS002DP\\_D.2d\\_dxf.zip](#)

English

3D PDF

3D

By downloading the CAD file I accept and agree to the [Terms and Conditions](#) of use.

Datasheets & Catalog Pages



[Data sheet](#)

English