

AMP NETCONNECT MIDSPAN

24-port Power-over-Ethernet Unit



Product Facts

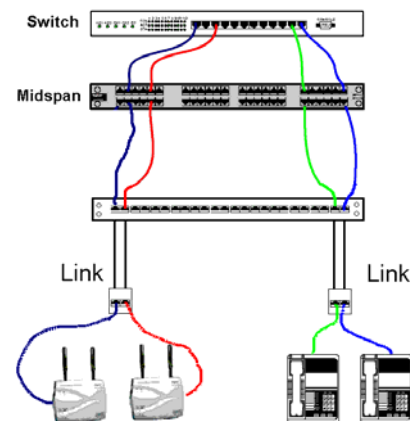
- 24-Port PoE Midspan Unit
- IEEE 802.3af compliant
- Optional Phantom Power version available
- Supports Cisco and Legacy pre-standard
- Supports 10/100/1000 MBit/s Ethernet
- Optional Power Upgrade
- SNMP Version available

Power over Ethernet (PoE) according to IEEE 802.3af defines the simultaneous provision of low voltage and Ethernet data signals over a cabling system compliant to the ISO 11801:2002 standard. Now, remote devices like VoIP phones, WLAN Access Points, security devices and much more can be powered remotely.

How? With the AMP NETCONNECT midspan products, injecting the DC power onto existing copper cabling is as simple as routing patch cords to the device - data from the switch comes in and powered data comes out towards the patch panel.

The combination of power and data on the same cabling means that cost savings can be realized on initial installations and as new devices are added to the network because separate power outlets are not required at each device. The advantages of the midspan power application include improved cost effectiveness (costs are not incurred for ports where power is not needed) and powered port management (since only the ports that need power need to be routed through the device).

The **AMP NETCONNECT 24-port PoE midspan** device allows insertion of power into as many as twenty-four outlets while providing Ethernet, Fast Ethernet and Gigabit Ethernet data.



Product Specification

AMP NETCONNECT 24-port PoE Midspan

Compliance:

Mode Unused pairs: Compliant to 802.3af midspan specifications
Mode Sheath Sharing: Compliant to 802.3af phantom power specs
Both modes support Cisco and legacy pre-standard PoE

No. of Ports:

24 LAN (input) and 24 powered (output) ports

Physical configuration:

19" rack-mount 1U panel

Per Port Data Rates:

10/100/1000 Mbps

Output Voltage:

-48 V dc

Ethernet Pin Assignment:

Midspan assignment: Pins 4/5 = +Rail; Pins 7/8 = -Rail

Phantom power assignment: Pins 1/2 = -Rail; Pins 3/6 = +Rail

Output Power(24port Usage):

7,7 W/port (AC Power Input); 15.4 W/Port (DC Power Input)

Additional features:

Additional port resettable fuses for extra protection over normal, overload or short-circuit 802.af conditions

Input AC Voltage and Frequency:

90 to 264 Vac, 47 to 63 Hz

AC Input current:

2.6 Amps @ 110 V ac / 1.2 Amp @ 240 Vac

Hold up time:

16ms at all input voltages

Cut-out:

PSU thermal overload protection

PSU fuse (internal):

3.15 Amps

Power Factor correction:

Active PFC meets EN61000-3-2

Isolation:

3000VAC to output / 1500 VAC to earth

Dimensions:

(H) 4.4 cm X (W) 44.5 cm X (D) 31,9 cm

Weight:

5 Kg

MTBF:

> 200,000 hours at 30°C

Connectors:

Shielded RJ-45, mains IEC 3 pin DIN

Environmental:

Operating Ambient Temperature: 0 to 40 °C

Operating Humidity:

Maximum 90%, non-condensing

Storage Temperature:

-20 ° to 70 °C

Storage Humidity:

Maximum 95%, non-condensing

Operating Altitude:

-1000 to 10,000 ft. (-300 to 3000 m)

Overall Typical Efficiency:

85% @ full load

Regulatory Compliance:

CE

Electromagnetic:

FCC Part 15, Class B with FTP cabling

AC input:

Emission & Immunity EN55022 (CISPR 22)

Class B with FTP EN55024 (CISPR 24)

Safety Approval:

UL/cUL Per EN60950

GS Mark Per EN60950

X=Powerline connector

X=1=USA, Canada and parts of South-East Asia;

X=2=Europe excl. Denmark, Switzerland and Italy;

X=3=Switzerland

X=4=Italy

X=5=Denmark

X=6=Australia & New Zealand

X=7=UK, Singapore, HongKong

X=8=India

Order Information:

24-port Midspan Unit, unused pairs, w/o management

Order No. 0-1591187-X

24-port Midspan Unit, unused pairs, with management

Order No. 1-1591187-X

24-port Midspan Unit, phantom power, w/o management

Order No. 2-1591187-X

24-port Midspan Unit, phantom power, with management

Order No. 3-1591187-X

AMP Netconnect Phone Numbers for Europe/Middle East/Africa:

Austria 43-1-90560-1204

Belgium 32-16-352-300

Czech Rep. 420-5-41-162-112

Denmark 45-70-15-52-00

Finland 358-95-12-34-20

France 33-1-3420-2122

Germany 49-6103-709-1547

Greece 30-210-9370-396

Hungary 36-1-289-1007

Italy 39-011-4012-111

Lithuania 370-5-213-1402

Netherlands 31-73-6246-246

Poland 48-22-4576-700

Romania 40-21-311-3479

Russia 7-095-926-55-06

South Africa 27-11-466-2999

Spain 34-93-291-0330

Sweden 46-8-5072-5000

Turkey 90-212-281-8181

U.A.E. 971-4-339-1199

Ukraine 380-44-206-2265

India 91-80-28412433

Norway 47-66-77-88-99

Slovenia 386-1561-3270

Switzerland 41-71-447-0447

United K. 44-208-420-8140

For Middle East & African Countries not shown: 33-1-3420-2122