



Sensors > Force Sensors > Force Sensor Elements > Compact Compression Load Cell



Force Sensor Type: OEM Compression Load Cells

Full Scale Range: 200 lbf

Operating Temperature Range: 0 – 50 °C [32 – 122 °F]

Output Signal Type: 20 mV/V

[All Compact Compression Load Cell \(46\)](#)

Features

Product Type Features

Force Sensor Type	OEM Compression Load Cells
-------------------	----------------------------

Electrical Characteristics

Supply Voltage Range	5 VDC
Full Scale Range	200 lbf

Usage Conditions

Accuracy	±1 % of FS
Operating Temperature Range	0 – 50 °C[32 – 122 °F]

Operation/Application

Output Signal Type	20 mV/V
--------------------	---------

Other

Zero Shift in CTR	±.05 % of FS
Sensitivity Shift	±.05 % of FS
Force Direction	Compression

Product Compliance

[For compliance documentation, visit the product page on TE.com>](#)

EU RoHS Directive 2011/65/EU	Not Compliant
------------------------------	---------------



EU ELV Directive 2000/53/EC	Compliant with Exemptions
China RoHS 2 Directive MIIT Order No 32, 2016	Restricted Materials Above Threshold
EU REACH Regulation (EC) No. 1907/2006	Current ECHA Candidate List: JUNE 2024 (241) Candidate List Declared Against: JAN 2024 (240) SVHC > Threshold: 2-methyl-1-(4-methylthiophenyl)-2-morpholinopropan-1-one (.14% in Component Part)
Halogen Content	Not Yet Reviewed for halogen content
Solder Process Capability	Not reviewed for solder process capability

Product Compliance Disclaimer

This information is provided based on reasonable inquiry of our suppliers and represents our current actual knowledge based on the information they provided. This information is subject to change. The part numbers that TE has identified as EU RoHS compliant have a maximum concentration of 0.1% by weight in homogenous materials for lead, hexavalent chromium, mercury, PBB, PBDE, DBP, BBP, DEHP, DIBP, and 0.01% for cadmium, or qualify for an exemption to these limits as defined in the Annexes of Directive 2011/65/EU (RoHS2). Finished electrical and electronic equipment products will be CE marked as required by Directive 2011/65/EU. Components may not be CE marked. Additionally, the part numbers that TE has identified as EU ELV compliant have a maximum concentration of 0.1% by weight in homogenous materials for lead, hexavalent chromium, and mercury, and 0.01% for cadmium, or qualify for an exemption to these limits as defined in the Annexes of Directive 2000/53/EC (ELV). Regarding the REACH Regulations, TE’s information on SVHC in articles for this part number is still based on the European Chemical Agency (ECHA) ‘Guidance on requirements for substances in articles’(Version: 2, April 2011), applying the 0.1% weight on weight concentration threshold at the finished product level. TE is aware of the European Court of Justice ruling of September 10th, 2015 also known as O5A (Once An Article Always An Article) stating that, in case of ‘complex object’, the threshold for a SVHC must be applied to both the product as a whole and simultaneously to each of the articles forming part of its composition. TE has evaluated this ruling based on the new ECHA “Guidance on requirements for substances in articles” (June 2017, version 4.0) and will be updating its statements accordingly.

Compatible Parts



Also in the Series | MEAS FX29



Force Sensor Elements(46)

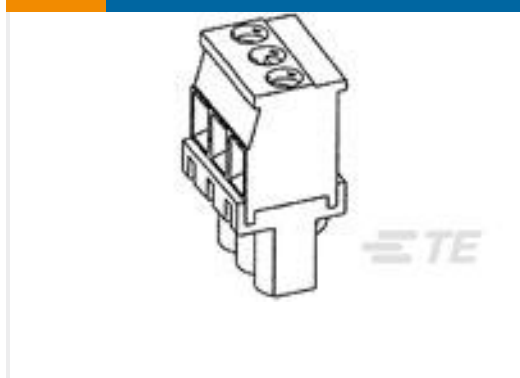
Customers Also Bought



TE Part #163092-2
Pin and Socket Contacts, Type III, LP
EMEA



TE Part #1676153-2
RN 0805 10K 0.1% 10PPM 1KRL



TE Part #284040-6
TERMI-BLOK VERTICAL PLUG STACK



TE Part #4-2176412-3
5W XSM M/OX 5% 300R



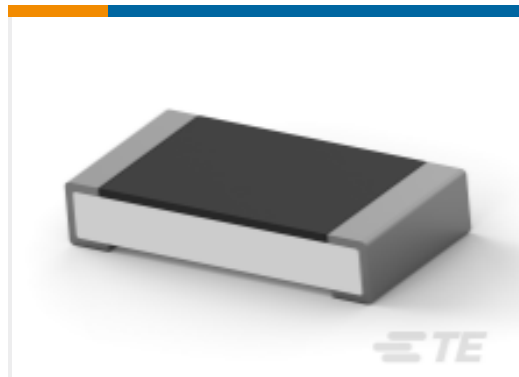
TE Part #6-1879352-4
RR02 5% 130R AMMO



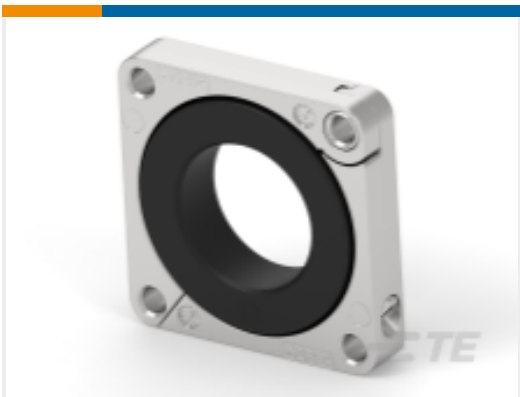
TE Part #20009605-52
FX292X-040A-0200-L



TE Part #FX1901-0001-0200-L
200 LBF COMPRESSION LOAD CELL
100MV



TE Part #2176383-5
RQ 1206 11R 0.1% 10PPM 1K RL



TE Part #E0-0242-002-000
615/915 METAL FLANGE, HINGED

Documents

Datasheets & Catalog Pages
FX29 COMPRESSION LOAD CELL

English