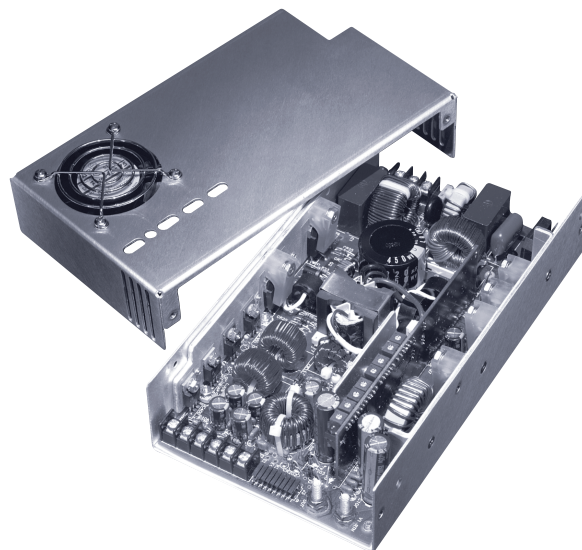


**Model**

# PFC200

**Switch Mode Power Supply**

**H.A.L.T.** Highly Accelerated Life Testing  
TESTED



200 Watts output power

Power Factor Correction

Four Floating Outputs

## Electrical Specifications

Input Voltage:	85-264 VAC, 47-63 Hz
Input Current:	<4A RMS @ 115 VAC @ full load <2A RMS @ 230 VAC @ full load
Inrush Current:	<35A, pk @ 135 VAC @ cold start <75A, pk @ 264 VAC @ cold start
Power Factor:	>0.99 @ full load @ 115VAC input
Harmonic Distortion:	Meets EN61000-3-2
EMI Filtering:	Meets CISPR 11 and 22 and FCC Part 15 Class B (conducted)
Input Protection:	Internal AC line fuse
Surge Withstand:	Meets EN61000-4
Output Power:	200W with 30CFM air; 260W for 20 sec 130W Convection cooled (consult factory for current ratings)
Line Regulation:	<0.1% for V1 and V2 <0.25% for V3 and V4
Load Regulation:	<0.25% for V1 and V2 <3.0% for V3 and V4 2.0% for 24V and above
Cross Regulation:	<0.1% for V1 and V2 <0.25% for V3 and V4
PARD:	Greater of 1% or 50mV 20MHz bandwidth
Hold-up Time:	>20 ms @ full load
Output Polarity:	All outputs are floating
Minimum Load:	10% on V1 output to ensure full regulation on all Aux outputs
Transient Response:	Greater of 150mV or 2% for 25% load change @ 1A/μs

Output Rise Time:	<100ms (10% to 90%)
Remote Sense:	Standard on V1, V2, V3 and V4 outputs Up to 400mV of cable drop
AC Power Fail:	TTL <sub>LOW</sub> logic "0" at least 5 ms before DC output drops 5% (without signal jitter).
Remote Margin:	5% Hi and Lo, V1 output only
Remote Adjust:	5% with external 0-5 VDC source, V1 output only
Overvoltage Protect:	Factory set, 125% ±5% on V1 output, cycle AC to reset
Overcurrent/Short Circuit:	All outputs are auto recovery
Reverse Voltage:	Reverse current up to rated outputs
Thermal Protection:	Auto off, Auto reset upon cool down
Efficiency:	Up to 70%
MTBF:	MIL-STD-HDBK 217E >200,000 hours @ 25°C Highly Accelerated Life Testing

## Available Voltage Outputs\*

Voltage Codes	V1 Voltages (Volts)	V1 Currents (Amps)	V2 Voltages (Volts)	V2 Currents (Amps) (Continuous/Peak)	V3 Voltages (Volts)	V3 Currents (Amps)	V4 Voltages (Volts)	V4 Currents (Amps)
-1	2	25						
-2	3.3	25	3.3	6/12A Pk				
-3	5	25	5	6/12A Pk	5	3	5	3
-4	12	11	12	6/12A Pk	12	3	12	3
-5	15	9	15	6/12A Pk	15	3	15	3
-6	24	5	24	4/8A Pk	24	1.5	24	1.5
-7	28	4.5	28	3.3/6.5 Pk	28	1	28	1
-8	36	3.5	36	2.5/5A Pk	36	1	36	1
-9	48	3	48	2/4A Pk	48	1	48	1

\* Consult factory for other voltages and OEM quantities.

Note: Standard models are 3455, 3443, 3644 and 3244

## PART # STRUCTURE:

**MODEL** - **VOLTAGE CODE** - **OPTION CODES** (See sheet 2)  
 - V1 V2 V3 V4 -  
**PFC200** - **X X X X** - **ABC....**

Example: Part Number **PFC200-2468-DL** = 200W Power Factor Corrected, (V1) 3.3V @ 25A, (V2) 12V @ 6/12A, (V3) 24V @ 1.5A and (V4) 36V @ 1A with DC OK and Pre-Load.

[CLICK HERE TO SEE THE PFC200 CODE TABLE AND AVAILABLE OPTIONS.](#)

## Model

# PFC200

### Options (code)

Fan Supply (12VDC, 150mA) (A) Fan/Cover (C)  
 DC OK (D) PF Invert (F)  
 DC OK Invert (E)) Pre-Load (L)  
 Gold Signal Pins (G) Remote Invert (S)  
 Metric Mounting (M) Molex Connectors (K)  
 Thermal Latch-Off (T) Sealed Pots (H)  
 Aux 2 Overvoltage Protection Circuit (V)  
 Remote On/Off with Standby Output of 5.1 VDC 100mA (R) \*\*\*

\*\*\* Consult factory for mounting information when ordering with fan/cover option. Voltage available as long as AC input is present.

### Compliance

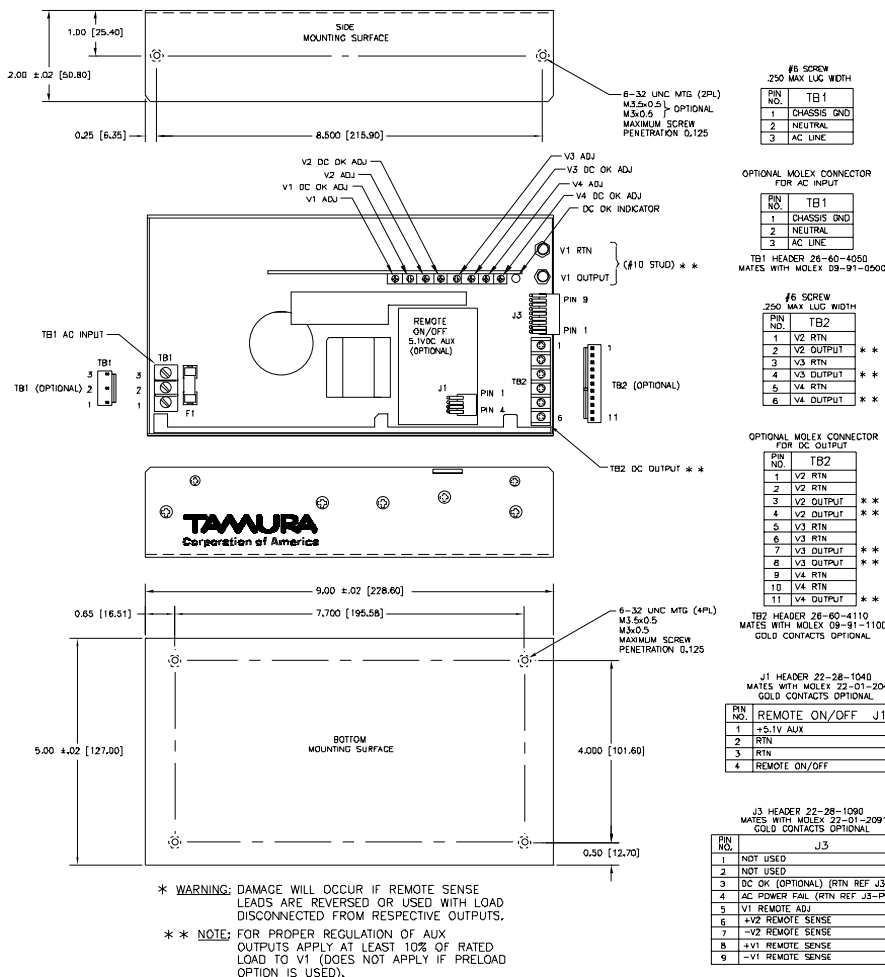
EN61000-4 CISPR 11 and 22, FCC Part 15 Class B  
 IEC61000-3-2  
 CE Declaration to Low Voltage Directive 72/73/EEC

### Certifications

EN61000-4-5 Level 3 EN61000-4-2 Level 2  
 EN61000-3-2 EN61000-4-2 Level 3 (Air Only)  
 EN61000-4-4 Level 3 EN61000-4-11  
 CISPR 11 and 22 FCC Part 15 Class B (conducted)

### Physical Specifications

Dimensions: (HxWxL) 2" x 5" x 9"  
 Operating Temp: 0 to 70°C; rated power to 50°C with 30CFM air derate linearly to 50% at 70°C.  
 Relative Humidity: 5% to 90%, non-condensing  
 Storage: -50 to 85°C/20-90% RH  
 Altitude: 10,000' operating; 40,000' storage



© Copyright 2006 TAMURA CORPORATION OF AMERICA. Specifications subject to change without notice.



TAMURA CORPORATION OF AMERICA  
 43352 Business Park Drive, Temecula, CA 92590-6624  
 (951) 699-1270 / Fax: (951) 676-9482  
 (800) 472-6624 www.tamuracorp.com



FM 32227