

## Model XE90

Extended Performance  
Single-Output Power Supplies

0 to 55°C Operating Temperature w/o Derating  
Electrostatically Shielded Transformer  
Remote Sensing

### Physical Specifications

Dimensions (cm): 21.59 X 13.97 X 12.37  
(8.50" X 5.50" X 4.87")  
Weight: 5.54 kg (12.3 lbs.)

### General Specifications

Item	
Input	115/230VAC $\pm$ 10%, 47 - 440Hz (derate output current 15% @ 400Hz)
Output	Floating, adjustable w/ multi-turn cermet pots over range per table
Line Regulation	$\pm$ 0.05% for 10% line change (0.2% for 20% change)
Load Regulation	$\pm$ 0.05% for 50% load change (0.2% for 100% change)
Transient Response	<50 $\mu$ s for 50% load change
Noise and Ripple	0.1% peak-to-peak
Stability	$\pm$ 0.1% max for 24 hrs after warmup
Temp. Coefficient	$\pm$ 0.01%/°C max.
Operating Temp.	0 - 55°C; Derate 2%/°C to 71°C

### Output Specifications\*

Model	Output Rating (Vdc)	Output Current (A)
XE90-5	5	18.0
	6	13.0
XE90-12	11	11.1
	12	10.2
	13	9.6
XE90-15	14	9.0
	15	8.4
	16	7.6
XE90-24	20	6.2
	21	6.2
	22	5.7
	23	5.7
	24	5.0
	25	5.0

\* Other voltage/current combinations are available in OEM quantities

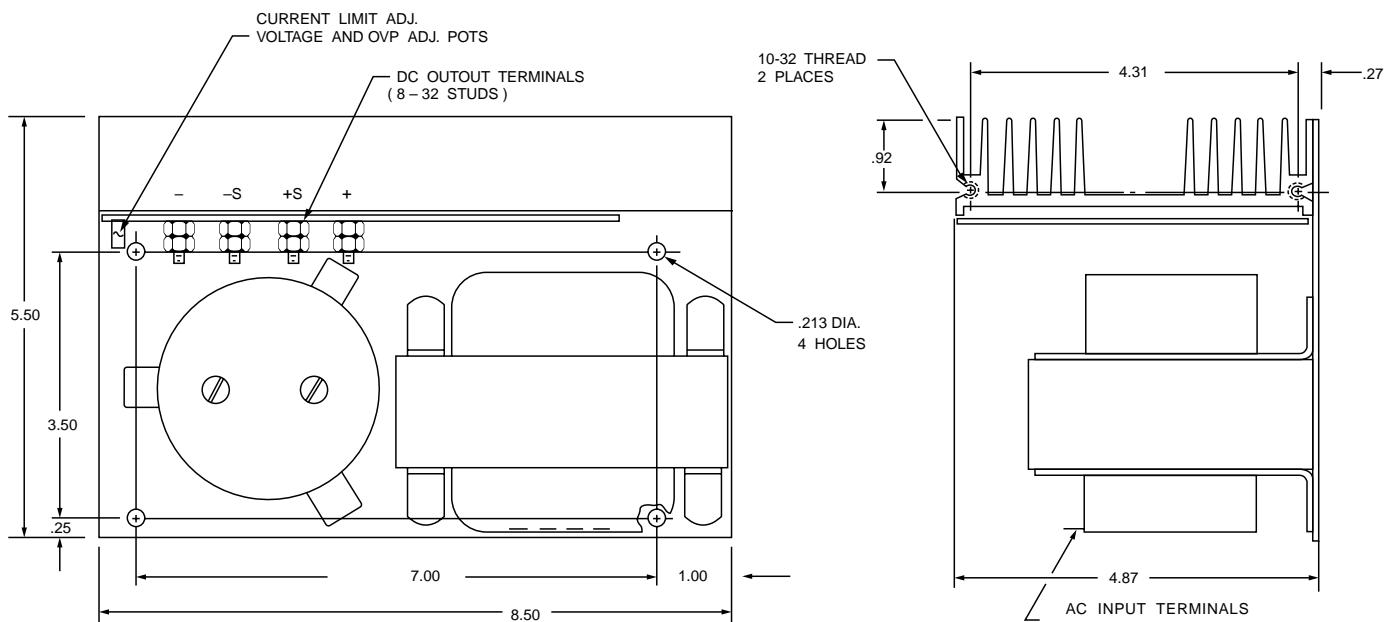
# Model XE90

## Optional Overvoltage Protection (OVP) Specifications

Voltage:	Adjustable with sealed cermet pot
Overvoltage Trip Margin:	Set at 120% nominal
Stability:	±0.1%/°C max. ±0.1%/24 hrs. after warmup
Temperature Coefficient:	0.01%/°C max.
Response Time:	8μsec typical
Speed:	Controlled; no nuisance tripping

## Certifications

UL 478



© Copyright 2001 Taiyo Yuden (U.S.A.), Inc. Specifications subject to change without notice.



**TAIYO YUDEN**

*world leaders in materials and electronics technology*

Taiyo Yuden (U.S.A.), Inc.

1770 La Costa Meadows Drive, San Marcos, CA 92069

(760) 510-3200 / Fax: (760) 471-4021

(800) 493-6835 [www.t-yuden.com](http://www.t-yuden.com) [powerproducts@t-yuden.com](mailto:powerproducts@t-yuden.com)



FM 32227