

Model

Extended Performance
Single-Output Power Supplies

XE180

0 to 55°C Operating Temperature w/o Derating

Electrostatically Shielded Transformer

Remote Sensing

Physical Specifications

Dimensions (cm): 24.43 X 21.59 X 12.40
(9.62" X 8.50" X 4.88")

Weight: 11.03 kg (24.5 lbs.)

General Specifications

Item	
Input	115/230VAC \pm 10%, 47 - 440Hz (derate output current 15% @ 400Hz)
Output	Floating, adjustable w/ multi-turn cermet pots over range per table
Line Regulation	\pm 0.05% for 10% line change (0.2% for 20% change)
Load Regulation	\pm 0.05% for 50% load change (0.2% for 100% change)
Transient Response	<50 μ s for 50% load change
Noise and Ripple	0.1% peak-to-peak
Stability	\pm 0.1% max for 24 hrs after warmup
Temp. Coefficient	\pm 0.01%/°C max.
Operating Temp.	0 - 55°C; Dereate 2%/°C to 71°C

Output Specifications*

Model	Output Rating (Vdc)	Output Current (A)
XE180-5	5	36.0
	6	26.0
XE180-12	11	18.7
	12	18.1
	13	16.6
XE180-15	14	16.0
	15	14.7
	16	13.8
XE180-24	20	10.4
	21	10.4
	22	10.1
	23	10.1
	24	9.3
	25	9.3

* Other voltage/current combinations are available in OEM quantities

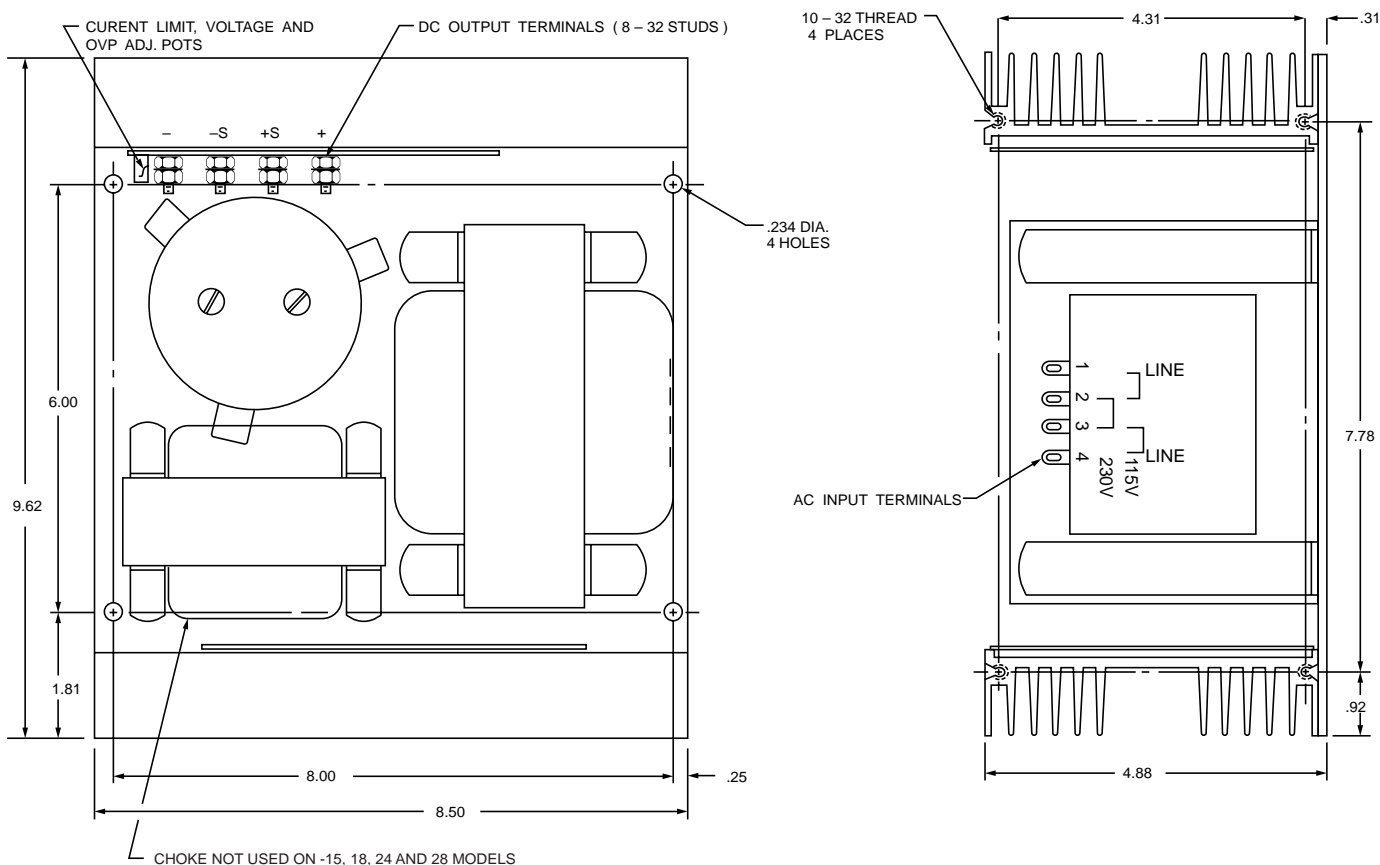
Model XE180

Optional Overvoltage Protection (OVP) Specifications

Voltage:	Adjustable with sealed cermet pot
Overvoltage Trip Margin:	Set at 120% nominal
Stability:	±0.1%/°C max. ±0.1%/24 hrs. after warmup
Temperature Coefficient:	0.01%/°C max.
Response Time:	8μsec typical
Speed:	Controlled; no nuisance tripping

Certifications

UL 478



© Copyright 2001 Taiyo Yuden (U.S.A.), Inc. Specifications subject to change without notice.



TAIYO YUDEN

world leaders in materials and electronics technology

Taiyo Yuden (U.S.A.), Inc.

1770 La Costa Meadows Drive, San Marcos, CA 92069

(760) 510-3200 / Fax: (760) 471-4021

(800) 493-6835 www.t-yuden.com powerproducts@t-yuden.com



FM 32227