



**1.77" x 2.56" x 0.93"**

### General Specifications:

|                               |                          |
|-------------------------------|--------------------------|
| Input voltage .....           | 85 VAC to 265 VAC        |
| Input frequency .....         | 47 Hz to 63 Hz           |
| Efficiency .....              | 65% typical              |
| Hold up time .....            | 10ms typical             |
|                               | at rated load and 115VAC |
| Over load protection .....    | auto recovery            |
| Short circuit protection..... | auto recovery            |
| Over voltage protection ..... | latch off                |

### Description:

SNP-901 series are for open frame on board power supplies which are universal input, small size, low cost orientated.

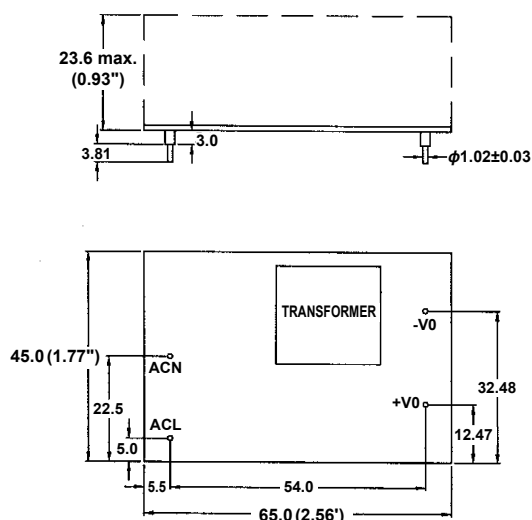
**Model available:**

- SNP-9016-A for 5V/2A
- SNP-9017 for 12V/1A
- SNP-901B for 3.3V/3A

Operating temperature ..... 0°C to 70°C  
derating rate : 0.25W/ °C >50°C  
Cooling ..... free air convection  
Storage temperature ..... -20°C to +85°C  
EMI ..... EN55022 "B", FCC "B"  
Harmonics ..... EN61000-3-2  
EMS ..... EN61000-4-2,-3,-4,-5,-6,-11  
Safety meet ..... UL 60950-1  
CSA C22.2 No. 234, EN60950-1

### Mechanical Specifications:

SNP-9016-A



-David-

**Notes:**

1. Size:  
1.77" x 2.56" x 0.93"
2. Connectors:  
AC input : Terminal pin  
DC output : Terminal pin
3. Packing:  
Net weight: 130 g approx. / unit  
Gross weight: 17.5 kg approx. / carton, 120 units / carton  
Carton size (mm):452 (L) x 301 (W) x 284 (H)

**10 years Warranty (contact Skynet's Distributors for details)**

## Output Specifications:

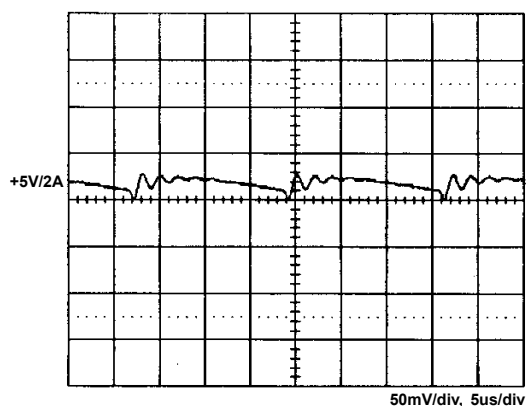
| MODEL NO.  | OUTPUT RAIL | LOAD |       |      |      | VOLTAGE ACCURACY | RIPPLE NOISE | LINE REG. | LOAD REG. |
|------------|-------------|------|-------|------|------|------------------|--------------|-----------|-----------|
|            |             | MIN. | RATED | MAX. | PEAK |                  |              |           |           |
| SNP-9016-A | +5V         | 0A   | 2A    |      |      | +4.95V~+5.05V    | 50mVpp       | ±0.5%     | ±1%       |
| SNP-9017   | +12V        | 0A   | 1A    |      |      | +11.90V~+12.10V  | 120mVpp      | ±0.5%     | ±1%       |
| SNP-901B   | +3.3V       | 0A   | 3A    |      |      | +3.25V~+3.35V    | 50mVpp       | ±0.5%     | ±1%       |

### Note:

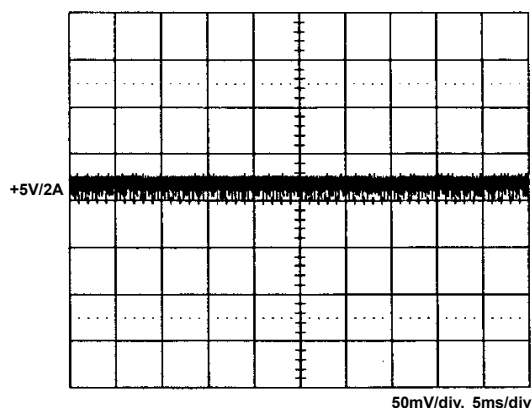
1. The total output current is rated load with free air convection. Continuous staying in more than rated load is not allowed.
2. At factory, in 60% rated load condition, each output is checked to be within voltage accuracy.
3. Line regulation is defined by changing ±10% of input voltage from nominal line at rated load.
4. Load regulation is defined by changing ±40% of measured output load from 60% rated load at another output set to 60% rated load.
5. Ripple & noise is measured by using 15MHz bandwidth limited oscilloscope and terminated each output with a 0.47uF capacitor and a 47u electrolytic capacitor at rated load and nominal line.
6. Hold up time is measured from the end of the last charging pulse to the time which the main output drops down to low limit of main output at rated load and nominal line.
7. Efficiency is measured at rated load and nominal line.

## Performance for SNP-9016-A:

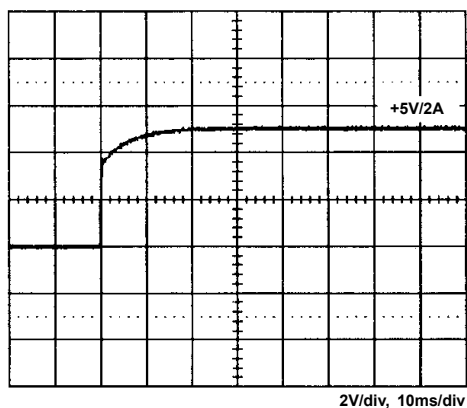
### 1. Switching frequency ripple



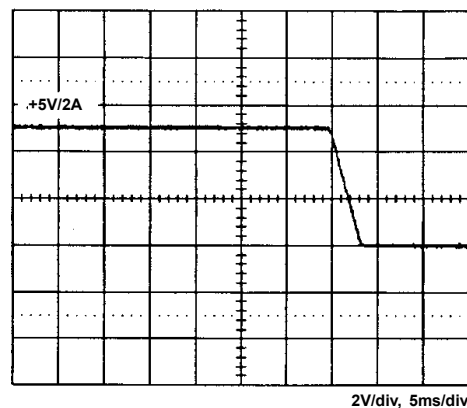
### 2. Line frequency ripple



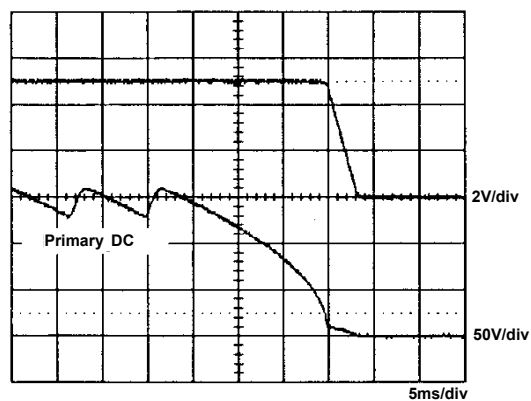
### 3. Output turn on wave form



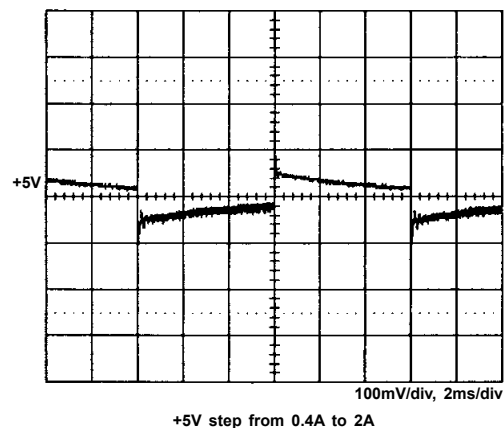
### 4. Output turn off wave form



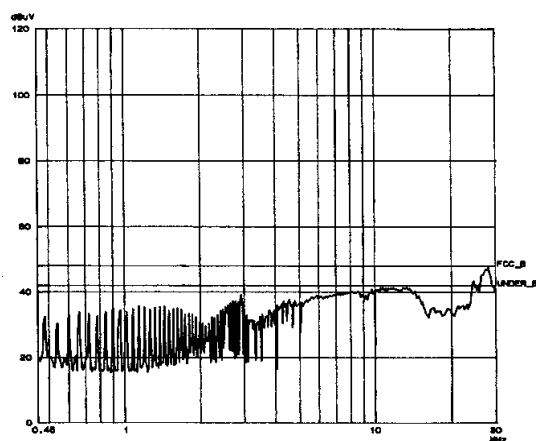
### 5. Hold-up time



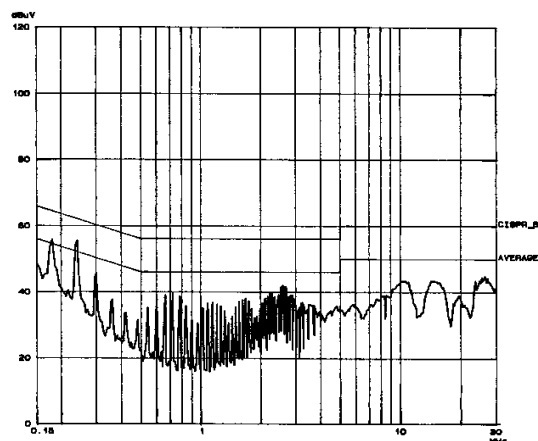
### 6. +5V step response



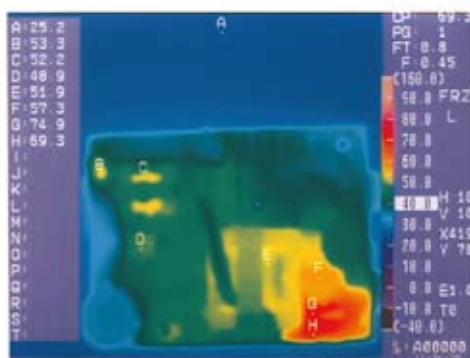
## 7. FCC B



## 8. EN 55022 B



## 9. Thermal profile



Tested at 104VAC, 5V/2A