



## MEMS mass flow sensors with manifold installation ready

FS5001 series

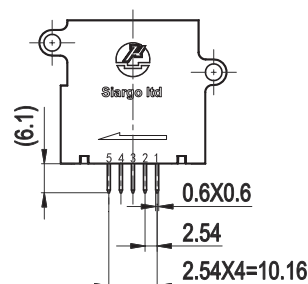
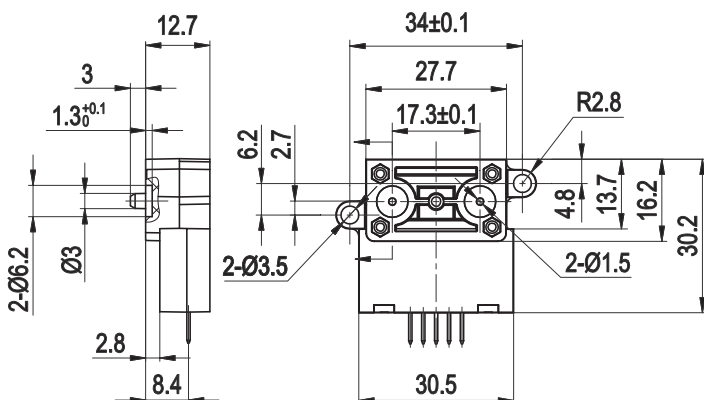
This series of mass flow sensors are designed with manifold installation configuration for gas mass flow measurement utilizing the Company's proprietary MEMS sensing technology. Instrumentation and automation are two targeted applications.

### Features

- ⦿ Designed for manifold installation
- ⦿ Fast response time, customizable to 10 msec
- ⦿ Laminar flow in full dynamic range
- ⦿ Both analog and digital interface
- ⦿ Large turn-down ration over 100:1
- ⦿ High/low flow applications

### Applications

- \* Laboratory flow measurement
- \* GC mass spectrometers
- \* Leakage detection
- \* Instrumentation
- \* Process monitor with dry gases
- \* Automation



**Siargo Ltd.**

Santa Clara, California

[www.Siargo.com](http://www.Siargo.com)

408.969.0368

[info@Siargo.com](mailto:info@Siargo.com)

## Specifications

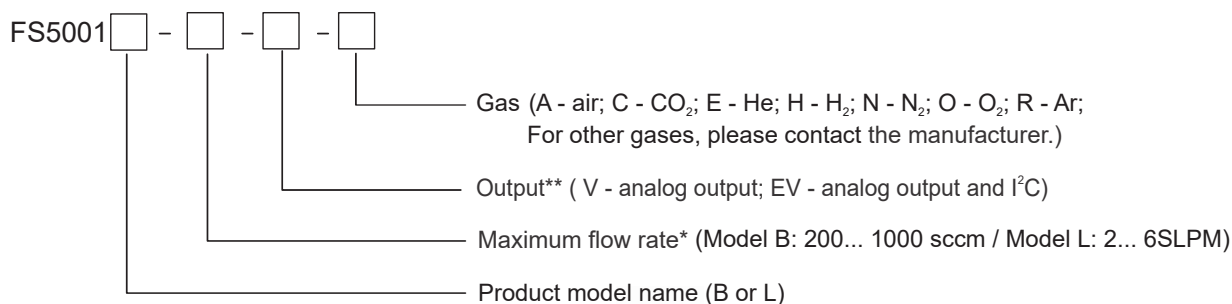
Model	FS5001B	FS5001L	Unit
Flow range	0 ~ 200... 1000	0 ~ 2000... 6000	sccm
Accuracy	$\pm(2.0+0.5FS)$		%
Turn-down ratio	> 100:1		
Power consumption	$\leq 50.0$		mW
Response time	10 (default, 5, 10, 20, 50, 100, 500, 1000 selectable)		msec
Maximum pressure rating	0.5		MPa
Maximum pressure loss	900 (typical)		Pa
Temperature	- 10 ~ 55		°C
Power supply	8 ~ 24		Vdc
Null shift	$\pm 30.0$		mV
Temperature coefficient	$\pm 0.12$		%/°C
Output	Linear, I <sup>2</sup> C; Analog 0.5 ~ 4.5 Vdc		
Mechanical connection	Manifold ready		
Weight	15		g

**Notes:** \* The above parameters are applicable at 20°C and 101.325kPa, air calibration.

\*\* Digital interface can be customized.

## Order information

The sensor part number is composed of the model number and suffixes indicating the full scale flow rate, output format as well as the calibration gas. Refer to the followings for details.



\* Numerical maximum flow rate only, e.g., 500 means maximum flow rate of 500 sccm, 6 means maximum flow rate of 6 SLPM;  
For CO<sub>2</sub>, model B up to 750 sccm or model L up to 5 SLPM.

\*\* The sensor standard output is analog, and digital output is optional and customizable.

- Please find your local sales contact at [www.Siargo.com](http://www.Siargo.com).
- For detailed product information or user manual please contact manufacturer.

© 2018 Siargo. The company reserves the rights to change the product specifications without the prior notice.  
For further information, please contact the manufacturer.