



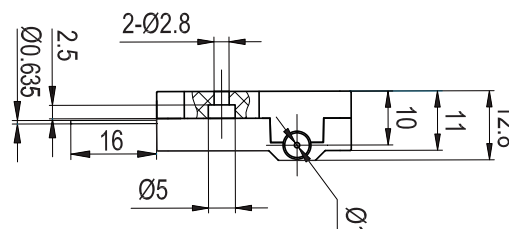
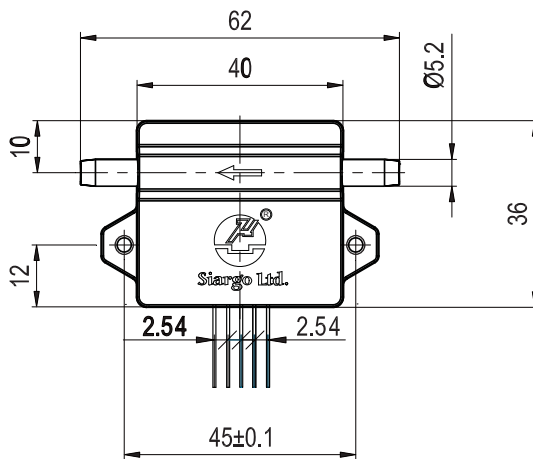
## MEMS mass flow sensors for low flow applications

FS4001 series

This series of mass flow sensors are primarily designed for gas low mass flow measurement with the Company's proprietary MEMS sensing technology. The conditioned laminar flow and electronics ensure high accuracy and reliability.

### Features

- ⦿ Designed for low mass gas flow metrology
- ⦿ Fast response time, customizable to 1 msec
- ⦿ Laminar flow in full dynamic range
- ⦿ Both analog and digital interface
- ⦿ Large turn-down ratio over 100:1
- ⦿ Optional detached design



### Applications

- \* Laboratory flow measurement
- \* GC mass spectrometers
- \* Leakage detection
- \* Instrumentation
- \* Process monitor with dry gases
- \* Automation

**Siargo Ltd.**

Santa Clara, California

[www.Siargo.com](http://www.Siargo.com)

408.969.0368

[info@Siargo.com](mailto:info@Siargo.com)



## Specifications

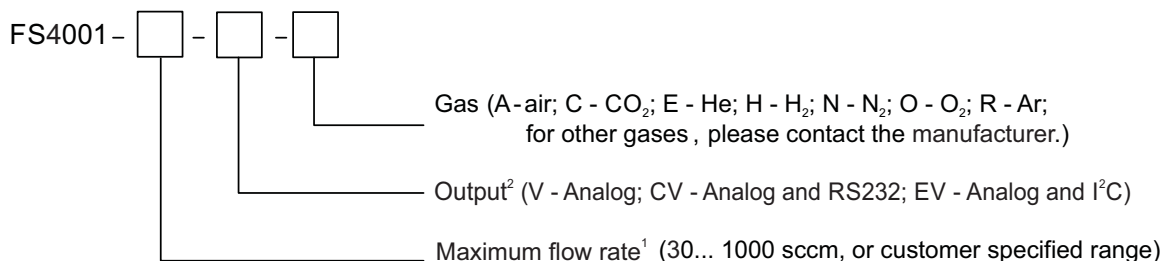
Model	FS4001	Unit
Flow range	0 ~ 30... 1000	sccm
Accuracy	$\pm(1.5+0.5FS)$	%
Turn-down ratio	> 100:1	
Power consumption	$\leq 50.0$	mW
Response time	65 (default, 4, 8, 16, 33, 131 selectable)	msec
Maximum pressure rating	0.5	MPa
Maximum pressure loss	30 (typical)	Pa
Temperature	- 10 ~ 55	°C
Power supply	8 ~ 24	Vdc
Null shift	$\pm 30.0$	mV
Temperature coefficient	$\pm 0.12$	%/°C
Output	Linear, RS232/I <sup>2</sup> C; Analog 0.5 ~ 4.5 Vdc	
Mechanical connection	V-nozzle	
Weight	15	g

**Notes:** \* The above parameters are applicable at 20°C and 101.325kPa, air calibration.

\*\* Digital interface can be customized.

## Order information

The sensor part number is composed of the model number and suffixes indicating the full scale flow rate, output format as well as the calibration gas. Refer to the followings for details.



1. Numerical maximum flow rate only, for example, 100 meaning maximum flow rate of 100 sccm.

For CO<sub>2</sub>, selectable: 30, 100, 200, 500 or 750 sccm (1000 sccm is not available).

2. The sensor is shipped with standard analog output. Digital output is optional.

• Please find your local sales contact at [www.Siargo.com](http://www.Siargo.com).

• For detailed product information or user manual please contact manufacturer.