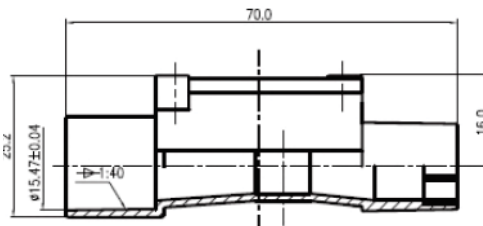




This series of mass flow sensors are designed for medical ventilators with ISO-15mm connector ready utilizing the Company's proprietary MEMS sensing technology. The adaptors are customizable for other general purpose gas flow metering.

- Designed for medical ventilators
- Fast response time, customizable
- ISO-15mm ready, alternative customizable
- Both analog and digital interface
- Large turn-down ratio over 100:1
- Optional NPT or other threaded adapters

- ✧ Medical ventilators
- ✧ Medical anesthesia equipment
- ✧ Endoscope
- ✧ Instrumentation
- ✧ Process monitor with dry gases
- ✧ Equipment and automation



Santa Clara, California
www.Siargo.com
408.969.0368
info@Siargo.com

Specifications

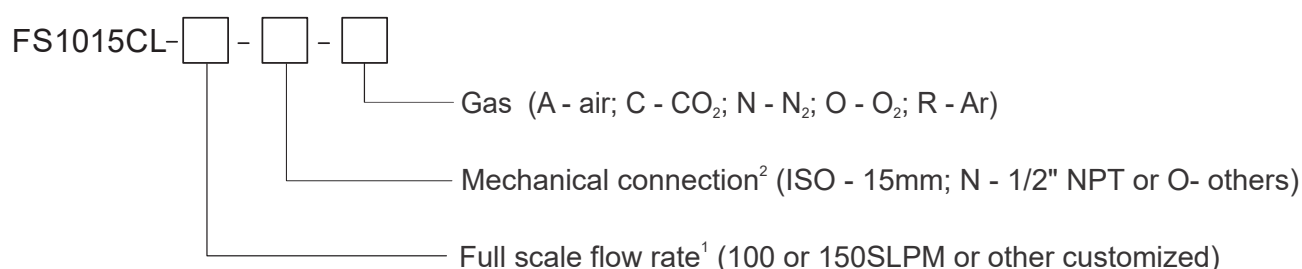
Model	FS1015	Unit
Flow range	0 ~ 100 / 0 ~ 150	SLPM
Accuracy	$\pm(2.0+0.5FS)$	%
Turn-down ratio	> 100:1	
Power consumption	≤ 50.0	mW
Response time	8.0 (maximum)	msec
Maximum pressure rating	0.2	MPa
Maximum pressure loss	1300 (typical)	Pa
Temperature	- 10 ~ 55	°C
Power supply	$5.0 \pm 5\%$	Vdc
Null shift	± 30.0	mV
Temperature coefficient	± 0.12	%/°C
Output	Linear, Analog 0.5 ~ 4.5 Vdc	
Mechanical connection	ISO - 15mm, alternative customizable	
Weight	15	g

Notes: * The above parameters are applicable at 20°C and 101.325kPa, air calibration.

** Digital interface can be customized.

Order information

The sensor part number is composed of the model number and suffixes indicating the full scale flow rate, output format as well as the calibration gas. Refer to the followings for details.



1. Numerical only, customizable flow rate shall be within 100 ~ 180 SLPM.

2. Mechanical connector diameter shall be not smaller than 1/2" or 15mm.

- Please find your local sales contact at www.Siargo.com.
- For detailed product information or user manual please contact manufacturer.