



MEMS environmental probe with integrated sensors

AM1000 series

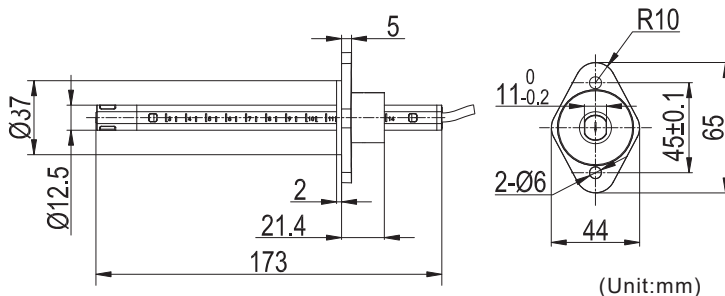
The products are designed for acquiring the environmental data of air mass velocity, temperature and humidity in an open space or air conduit. The calibration correlated well to those in a wind tunnel makes it ideal for HVAC, smart home, process line gas monitor and other IOT or environmental applications.

Features

- Customized air velocity range 1... 30 m/sec
- Temperature -20 ... 65°C
- Humidity 0... 100%RH
- Fast response time 10 msec
- RS485 Modbus or I²C for easy networking
- Easy installation

Applications

- * HVAC control probe
- * Smart home appliance
- * Process line gas monitor
- * Weather station
- * Clean room air profiler
- * Sport data acquisition
- * Mining environmental data



Siargo Ltd.

Santa Clara, California

www.wisenstech.com

408.969.0368

Specifications

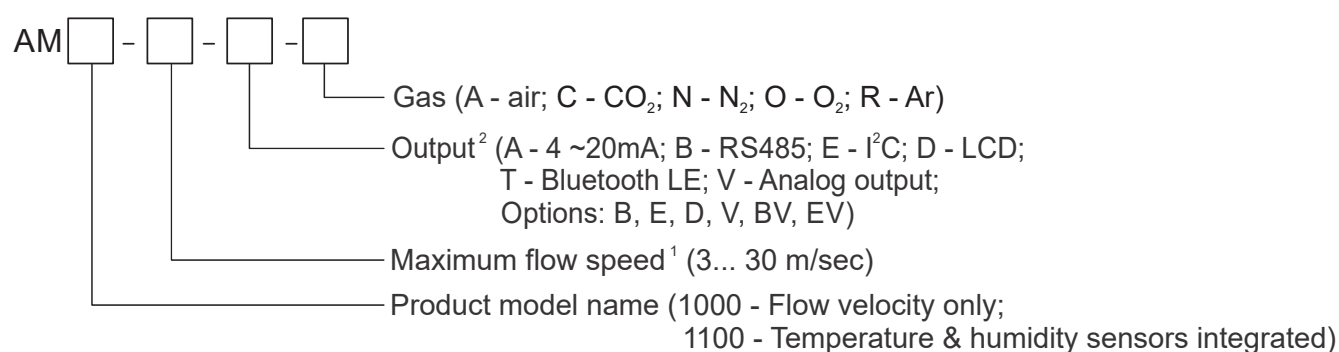
Model	AM1000	AM1100	Unit
Flow range	0 ~3... 30		m/sec
Accuracy	±2.5		%FS
Turn-down ratio	> 50:1		
Power consumption	≤ 50.0		mW
Response time	10		msec
Maximum pressure rating	0.2		MPa
Humidity and accuracy	n/a	0 ~ 100 %RH / ± 2.0%	
Humidity sensing response	n/a	5.0	sec
Temperature and accuracy	n/a	- 10 ~ 100°C / ±0.5%	
Power supply	8 ~ 24		Vdc
Output	Analog / RS485 (Modbus) / I ² C		
Optional interface	LCD display / 4~20mA / Bluetooth LE		
Working temperature	-10 ~ 95		°C
Mechanical connection	Insertion with guide		

Notes: * The above parameters are applicable at 20°C and 101.325kPa, air calibration.

** Digital interface can be customized.

Order information

The sensor part number is composed of the model number and suffixes indicating the full scale flow rate, output format as well as the calibration gas. Refer to the followings for details.



1. Numerical maximum flow speed only, for example, 10 meaning maximum flow speed of 10 m/sec.

2. LCD, 4~20mA and Bluetooth are optional, and shall require additional time for manufacture.

- Please find your local sales contact at www.Siargo.com.
- For detailed product information or user manual please contact manufacturer.