

| MHM5 SERIES

SSI ABSOLUTE MULTI-TURN ENCODER, MHM510-SSIR RANGE



Features

MHM510, standard encoder Ø58mm with SSI interface:

- Robust and compact design
- Solid shaft version Ø 10 mm (06 mm available upon request)
- Precision ball bearings with sealing flange
- High temperatures performances $-40^{\circ}\text{C} \dots +85^{\circ}\text{C}$
- Code disc made of unbreakable and durable plastic
- Mechanical memorisation of the number of turns by gears
- Resolution: 13 bits = 8192 steps/turn (max 16 bits)
- Number of Turns : 12 bits = 4096 turns (max 14 bits)
- Polarity inversion and short circuit protection
- Highly integrated circuit in SMD-technology

SPECIFICATIONS

Mechanical

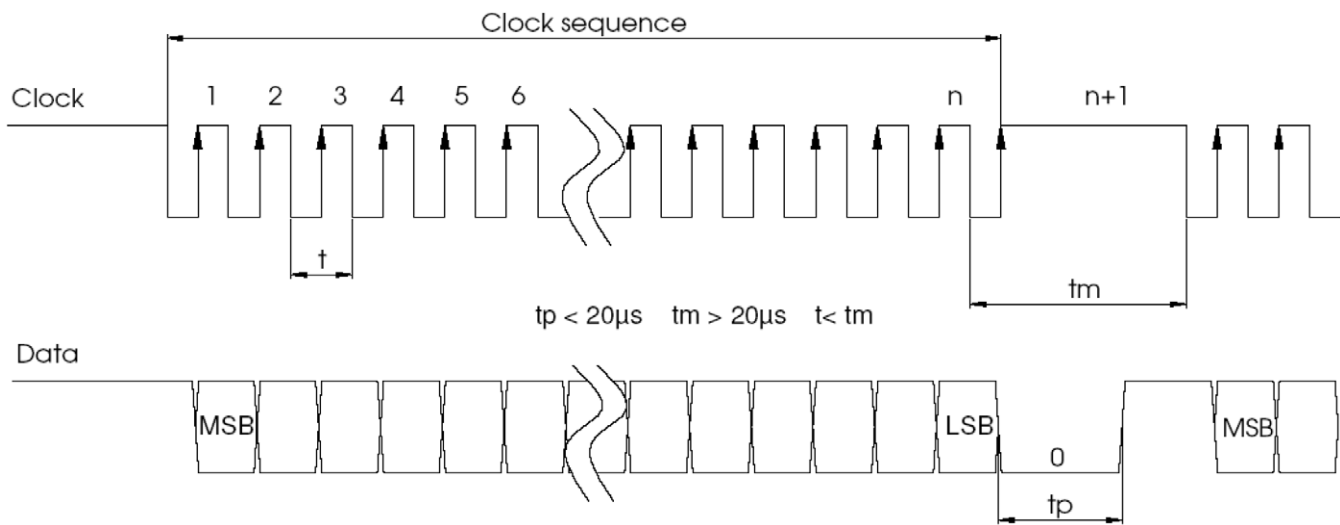
Material	Cover: Aluminum
	Body: Aluminum
	Shaft: Stainless Steel
Max. Shaft Loading	Axial: 40 N
	Radial: 110 N
Shaft Inertia	$\leq 30 \text{ g.cm}^2$
Torque	$\leq 3 \text{ N.cm}$
RPM (Continuous Operation)	6 000 tr/min
Shock (EN 60068-2-27)	$\leq 100 \text{ g}$ (half-sinus, 6 ms)
Shock (EN 60028-2-29)	$\leq 10 \text{ g}$ (half-sinus, 16ms)
Vibrations (EN 60068-2-6)	$\leq 10 \text{ g}$ (10Hz... 1 000Hz)
Weight	600 g
Operating Temperature	$-40 \dots +85^{\circ}\text{C}$
Storage Temperature	$-40 \dots +85^{\circ}\text{C}$
Humidity	98 % without Condensation
Protection Class (EN 60529)	IP65: cover

Lifetime in 10^8 Revolutions with F_a / F_r (Axial / Radial)		
40 N / 60 N	40 N / 80 N	40 N / 110 N
25	10	4

Electrical

Clock input	via opto-coupleur
Data output	line - driver according RS422
Clock frequency	100kH – 2MHz
Accuracy	+ ½ LSB
Supply voltage	4,75 – 30Vdc
Cycle time (Reset)	< 150 µs
Turn on time	< 1 s
Power consumption	max 1W
Electrical life-time	> 10 ⁵ h
EMC	EN 61000-6-4 EN 61000-6-2

SSI TRANSMISSION

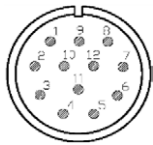


Driver	Driver meets EIA standard RS422 ; transmission rates up to 10 Mbits/s
Transfer	Transfert distance up to 1200m
Transmission	Balanced transmission provides high noise immunity
Pair Lines	Shielded and twisted pair lines are essential to attain extremely high noise immunity

Shielded and twisted pair lines are essential to attain extremely high noise immunity

Type	CLK -	CLK +	DATA +	DATA -	DIRECTION	Reset	+ Ub 4,75-30Vdc	GND
S1	1	2	3	4	8	9	11	12

Pinning Encoder (Male)



	MHM5	S1	01	G	12	13	B	15	0	PRL
Family	MHM5									
	Absolute multi turn encoder									
Reset Function		S1								
Version			01							
Code				G						
	G: Gray									
Number of Turns					12					
	12: 2 ¹² (4096)									
Resolution (pos./turn)						13				
	13: 2 ¹³ (8192)									
Clamp Flange							B			
	C									
Shaft Diameter								15		
	10: 10mm									
Mechanical Options									0	
	0: Without mechanical options									
Connector										PRL
	PRL: Radial M23 connector									

AGENCY APPROVALS & CERTIFICATIONS



Datasheets provided by Sensata Technologies, Inc., its subsidiaries and/or affiliates ("Sensata") are solely intended to assist third parties ("Buyers") who are developing systems that incorporate Sensata products (also referred to herein as "components"). Buyer understands and agrees that Buyer remains responsible for using its independent analysis, valuation, and judgment in designing Buyer's systems and products. Sensata datasheets have been created using standard laboratory conditions and engineering practices. Sensata has not conducted any testing other than that specifically described in the published documentation for a particular datasheet. Sensata may make corrections, enhancements, improvements, and other changes to its datasheets or components without notice.

Buyers are authorized to use Sensata datasheets with the Sensata component(s) identified in each particular datasheet. HOWEVER, NO OTHER LICENSE, EXPRESS OR IMPLIED, BY ESTOPPEL OR OTHERWISE TO ANY OTHER SENSATA INTELLECTUAL PROPERTY RIGHT, AND NO LICENSE TO ANY THIRD PARTY TECHNOLOGY OR INTELLECTUAL PROPERTY RIGHT, IS GRANTED HEREIN. SENSATA DATASHEETS ARE PROVIDED "AS IS". SENSATA MAKES NO WARRANTIES OR REPRESENTATIONS WITH REGARD TO THE DATASHEETS OR USE OF THE DATASHEETS, EXPRESS, IMPLIED, OR STATUTORY, INCLUDING ACCURACY OR COMPLETENESS. SENSATA DISCLAIMS ANY WARRANTY OF TITLE AND ANY IMPLIED WARRANTIES OF MERCHANTABILITY, FITNESS FOR A PARTICULAR PURPOSE, QUIET ENJOYMENT, QUIET POSSESSION, AND NON-INFRINGEMENT OF ANY THIRD PARTY INTELLECTUAL PROPERTY RIGHTS WITH REGARD TO SENSATA DATASHEETS OR USE THEREOF.

All products are sold subject to Sensata's terms and conditions of sale supplied at www.sensata.com. SENSATA ASSUMES NO LIABILITY FOR APPLICATIONS ASSISTANCE OR THE DESIGN OF BUYERS' PRODUCTS. BUYER ACKNOWLEDGES AND AGREES THAT IT IS SOLELY RESPONSIBLE FOR COMPLIANCE WITH ALL LEGAL, REGULATORY, AND SAFETY-RELATED REQUIREMENTS CONCERNING ITS PRODUCTS, AND ANY USE OF SENSATA COMPONENTS IN ITS APPLICATIONS, NOTWITHSTANDING ANY APPLICATIONS-RELATED INFORMATION OR SUPPORT THAT MAY BE PROVIDED BY SENSATA.

Mailing Address: Sensata Technologies, Inc., 529 Pleasant Street, Attleboro, MA 02703, USA

CONTACT US

Americas

+1 (800) 350 2727
sensors@sensata.com

Europe, Middle East & Africa

+33 (3) 88 20 8080
position-info.eu@sensata.com

Asia Pacific

sales.isasia@list.sensata.com
 China +86 (21) 2306 1500
 Japan +81 (45) 277 7117
 Korea +82 (31) 601 2004
 India +91 (80) 67920890
 Rest of Asia +886 (2) 27602006
 ext 2808