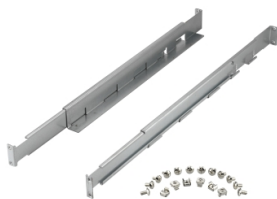


Product data sheet

Specifications



Easy UPS On-Line SRVS 19" Rail Kit, 700mm depth

SRVSRK1

Overview

Presentation	For small to medium businesses, Easy UPS 1 Ph On-Line provides essential power protection for unstable power conditions, ensuring consistent and reliable connectivity at the most critical moments.
Lead time	Usually in Stock

Main

product or component type	Uninterruptible power supply (UPS)
provided equipment	User manual Mounting hardware
Range of product	Easy UPS 1Ph On-Line

Physical

Height	4.26 cm
Width	4.14 cm
Depth	70 cm
net weight	1.44 kg
mounting mode	Rack-mounted

Packing Units

Unit Type of Package 1	PCE
Number of Units in Package 1	1
Package 1 Height	51.000 cm
Package 1 Width	9.500 cm
Package 1 Length	6.000 cm
Package 1 Weight	1.660 kg
Unit Type of Package 2	CAR
Number of Units in Package 2	16
Package 2 Height	29.000 cm
Package 2 Width	41.000 cm
Package 2 Length	53.000 cm
Package 2 Weight	28.000 kg
Unit Type of Package 3	PAM
Number of Units in Package 3	192

Disclaimer: This documentation is not intended as a substitute for and is not to be used for determining suitability or reliability of these products for specific user applications

Package 3 Height	120.000 cm
Package 3 Width	102.000 cm
Package 3 Length	100.000 cm
Package 3 Weight	331.720 kg

Contractual warranty

Warranty	1 year repair or replace
----------	--------------------------

Sustainability

Green Premium™ label is Schneider Electric's commitment to delivering products with best-in-class environmental performance. Green Premium promises compliance with the latest regulations, transparency on environmental impacts, as well as circular and low-CO₂ products.

Guide to assessing product sustainability is a white paper that clarifies global eco-label standards and how to interpret environmental declarations.

[Learn more about Green Premium >](#)

[Guide to assess a product's sustainability >](#)



Transparency RoHS/REACH

Well-being performance

✓ Toxic Heavy Metal Free

✓ Mercury Free

✓ Rohs Exemption Information [Yes](#)

Certifications & Standards

Reach Regulation	REACH Declaration
Eu Rohs Directive	Compliant EU RoHS Declaration
China Rohs Regulation	China RoHS declaration Pro-active China RoHS declaration (out of China RoHS legal scope)
Environmental Disclosure	Product Environmental Profile
Weee	The product must be disposed on European Union markets following specific waste collection and never end up in rubbish bins