

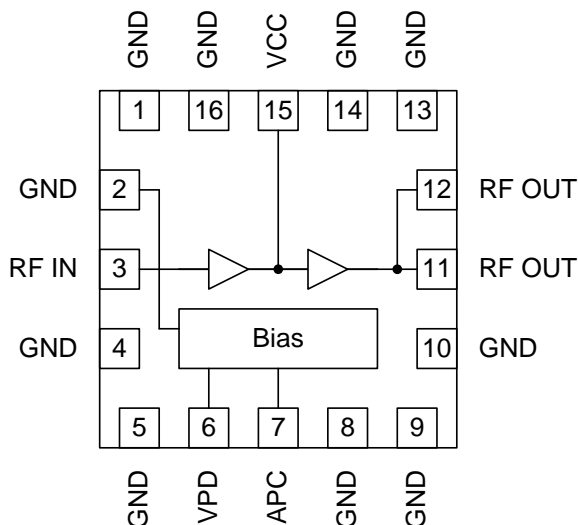


Features

- 23.5dBm Typical Output Power
- 0dB to 28dB Variable Gain
- 45% Efficiency at Max Output
- On-Board Power Down Mode
- 2.4GHz to 2.5GHz Operation
- 902MHz to 928MHz Operation

Applications

- Bluetooth™ PA
- 2.4GHz to 2.5GHz ISM Band Systems
- 902MHz to 928MHz ISM Band Systems
- 3.6V Spread-Spectrum Cordless Phones
- Portable Battery-Powered Equipment
- Spread-Spectrum Systems



Functional Block Diagram

Product Description

The RF2172 is a medium-power high efficiency amplifier IC targeting 3.6V hand-held systems. The device is manufactured on an advanced Gallium Arsenide Heterojunction Bipolar Transistor (HBT) process, and has been designed for use as the final RF amplifier in 2.45GHz Bluetooth applications and frequency hopping/direct sequence spread-spectrum cordless telephones or other applications in the 902MHz to 928MHz ISM band. The device is packaged in a compact 4mm x 4mm QFN. The device features analog gain control to optimize transmit power while maximizing battery life in portable equipment requiring up to 100mW transmit power at the antenna port.

BLUETOOTH is a trademark owned by the Bluetooth SIG, Inc., and licensed to RF Micro Devices, Inc.

Optimum Technology Matching® Applied

- | | | | |
|--|--------------------------------------|-------------------------------------|-----------------------------------|
| <input checked="" type="checkbox"/> GaAs HBT | <input type="checkbox"/> SiGe BiCMOS | <input type="checkbox"/> GaAs pHEMT | <input type="checkbox"/> GaN HEMT |
| <input type="checkbox"/> GaAs MESFET | <input type="checkbox"/> Si BiCMOS | <input type="checkbox"/> Si CMOS | <input type="checkbox"/> RF MEMS |
| <input type="checkbox"/> InGaP HBT | <input type="checkbox"/> SiGe HBT | <input type="checkbox"/> Si BJT | |

Absolute Maximum Ratings

Parameter	Rating	Unit
Supply Voltage (RF off)	-0.5 to +6.0	V _{DC}
APC Current (Maximum)	+10	mA
Control Voltage (V _{PD})	-0.5 to +6.0	V _{DC}
Input RF Power	+10	dBm
Operating Case Temperature	-40 to +85	°C
Storage Temperature	-55 to +155	°C

**Caution!** ESD sensitive device.

Exceeding any one or a combination of the Absolute Maximum Rating conditions may cause permanent damage to the device. Extended application of Absolute Maximum Rating conditions to the device may reduce device reliability. Specified typical performance or functional operation of the device under Absolute Maximum Rating conditions is not implied.

The information in this publication is believed to be accurate and reliable. However, no responsibility is assumed by RF Micro Devices, Inc. ("RFMD") for its use, nor for any infringement of patents, or other rights of third parties, resulting from its use. No license is granted by implication or otherwise under any patent or patent rights of RFMD. RFMD reserves the right to change component circuitry, recommended application circuitry and specifications at any time without prior notice.



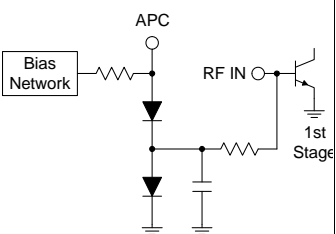
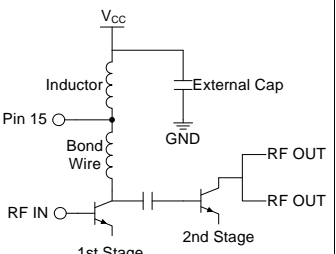
RoHS (Restriction of Hazardous Substances): Compliant per EU Directive 2011/65/EU.

Nominal Operating Parameters

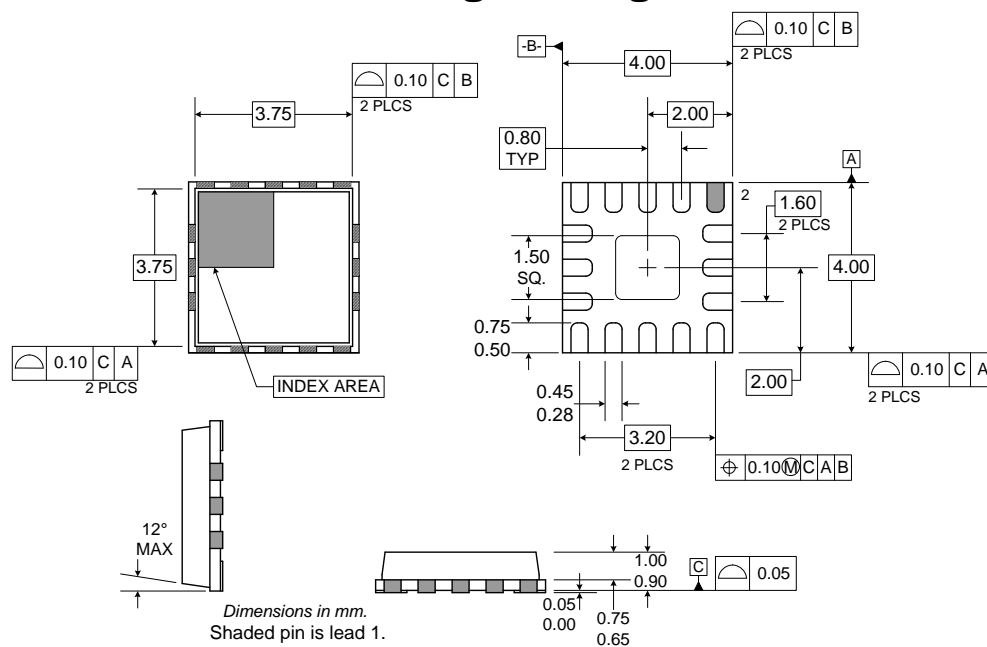
Parameter	Specification			Unit	Condition
	Min.	Typ.	Max.		
Overall					T = 25 °C, V _{CC} = 3.6V, V _{PD} = 3.6V, V _{APC} = 2.5V
Usable Frequency Range		500 to 2500		MHz	
Input Impedance		50		Ω	
Input VSWR		1.8:1			Without Input Match
Output Load VSWR	<10:1				0 ≤ V _{APC} ≤ 3.0V
	<6:1				0 ≤ V _{APC} ≤ 3.6V
2.45GHz Operation					Freq = 2.4GHz to 2.5GHz, P _{IN} = 0dBm
Operating Frequency		2.4 to 2.5		GHz	
Maximum Output Power	22	+23.5	24.5	dBm	
Total Efficiency		45		%	
Reverse Isolation		-25		dB	
Second Harmonic		-45		dBc	
Third Harmonic		-40		dBc	
All Other Spurious		-50		dBc	
Output Load Impedance		20-j4.5			Present to part
Gain Control Voltage		0 to V _{CC}		V	
High Gain	+22			dB	V _{APC} = 3.6V, V _{CC} = 3.6V, P _{IN} = 0dBm
Low Gain			-10	dB	V _{APC} = 0V, V _{CC} = 3.6V, P _{IN} = 0dBm
902MHz Operation					Freq = 902MHz to 928MHz, P _{IN} = -3.0dBm
Operating Frequency		902 to 928		MHz	
Maximum Output Power		+24		dBm	
Total Efficiency		58		%	
Reverse Isolation		-35		dB	
Second Harmonic		-40		dBc	
Third Harmonic		-40		dBc	
All Other Spurious		-50		dBc	
Output Load Impedance		20-j1.6		W	Present to part
Gain Control Voltage		0 to V _{CC}		V	
Gain Control Slope		20	dB/V		
Gain		0 to 28	dB		
Idle Current		35	65	mA	V _{PD} = 3.6V, V _{APC} = 3.6V, RF P _{IN} ≤ -30dBm

Parameter	Specification			Unit	Condition
	Min.	Typ.	Max.		
Power Supply					
Power Supply Voltage		3.6		V	
Power Supply Current		145		mA	V _{CC} = 3.6V, V _{APC} = 3.6V, P _{IN} = -3dBm, V _{PD} = 3.6V
Power Down Current		2.8	10	μA	V _{CC} = 3.6V, V _{APC} = 0V, V _{PD} = 0V total I _{CC}
I(PD)		4.5		mA	V _{CC} = 3.6V, V _{PD} = 3.6V into PD pin
I(PD)		2.25		mA	V _{CC} = 3.0V, V _{PD} = 3.0V into PD pin

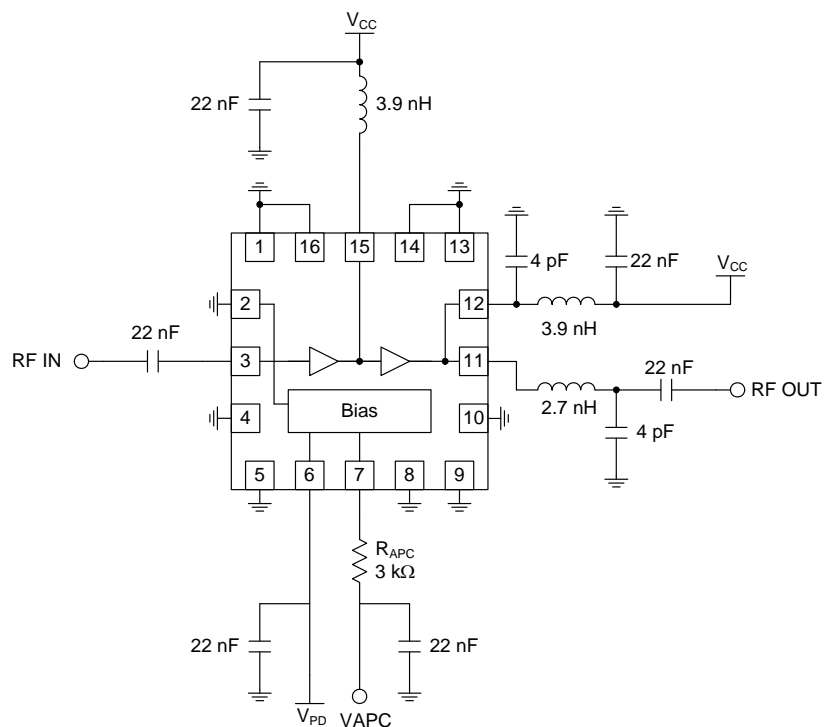
Pin Names and Descriptions

Pin	Name	Description	Interface Schematic
1	GND	Ground connection. For best performance, keep traces physically short and connect immediately to the ground plane.	
2	GND	Ground connection for the driver stage. For best performance, keep traces physically short and connect immediately to the ground plane.	
3	RF IN	RF input. This is a 50Ω input. No external matching is needed. An external DC blocking capacitor is required if this port is connected to a DC path to ground or a DC voltage.	See pin 15.
4	GND	See pin 1.	
5	GND	See pin 1.	
6	VPD	Power down pin. When this pin is 0V, the device will be in power down mode, dissipating minimum DC power. This pin also serves as the V_{CC} supply pin for the bias circuitry. V_{PD} should be at the supply voltage when the part is not in power down mode.	
7	APC	Analog power control. Output power varies as a function of the voltage on this pin. See graph. This pin must be driven through a series resistor with a voltage between 0V and V_{CC} . Series resistor determines dynamic range of power control. See plot "P _{OUT} versus Gain Control versus Gain Control Resistor".	
8	GND	See pin 1.	
9	GND	See pin 1.	
10	GND	See pin 1.	
11	RF OUT	RF output. An external matching network is required to provide the optimum load impedance at this pin.	See pin 15.
12	RF OUT	RF output and power supply for the output stage. Bias voltage for the output stage is provided through this pin. A shunt cap resonating with the bond wire inductance at $2xf_0$ can also be used at this pin to provide a second harmonic trap.	See pin 15.
13	GND	See pin 1.	
14	GND	See pin 1.	
15	VCC	Power supply for driver stage and interstage matching. This pin forms the shunt inductance needed for proper tuning of the interstage. Refer to the application schematic for the proper configuration. Note: Position and value of the components are important.	
16	GND	See pin 1.	
Pkg Base	GND	Ground connection for the output stage. This pad should be connected to the groundplane by vias directly under the device. A short path is required to obtain optimum performance, as well as provide a good thermal path to the PCB for maximum heat dissipation.	

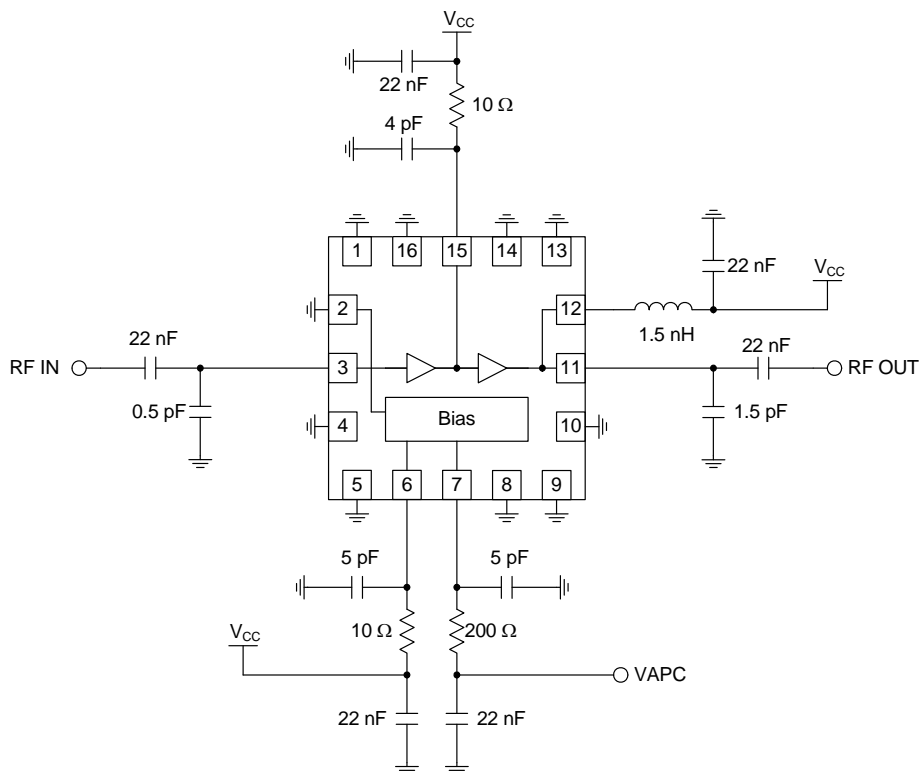
Package Drawing



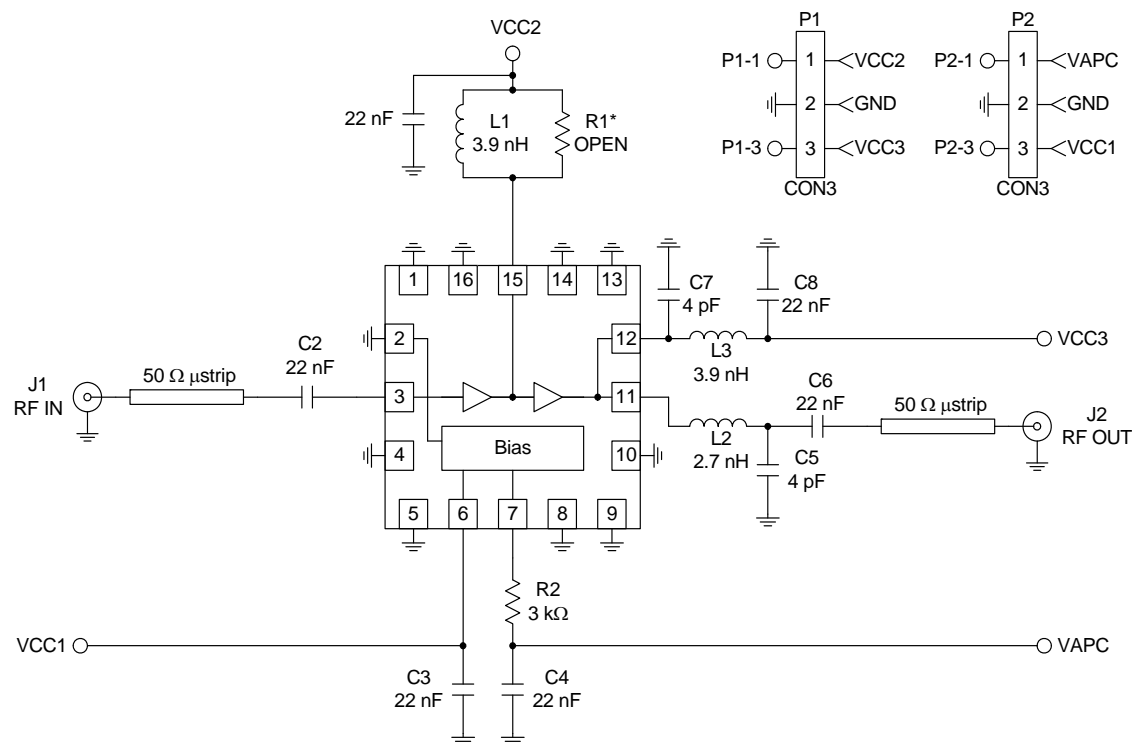
Application Schematic - 915MHz



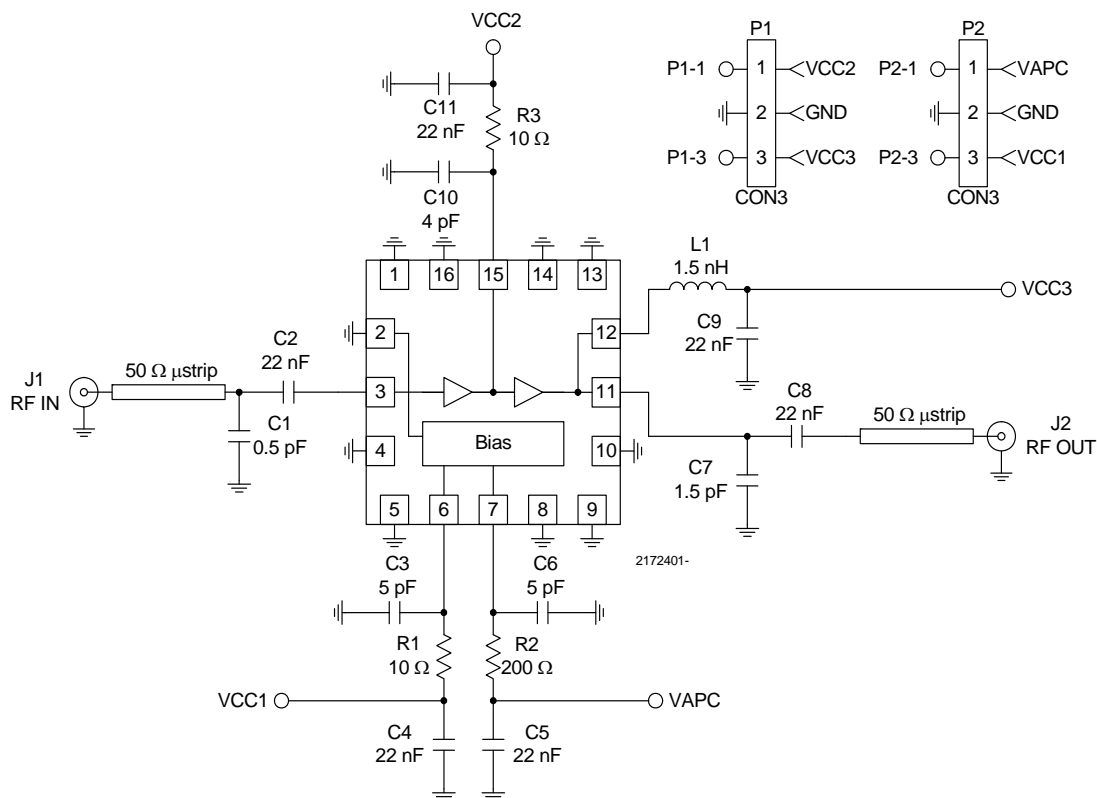
Application Schematic - 2.45GHz



Evaluation Board Schematic - 915MHz



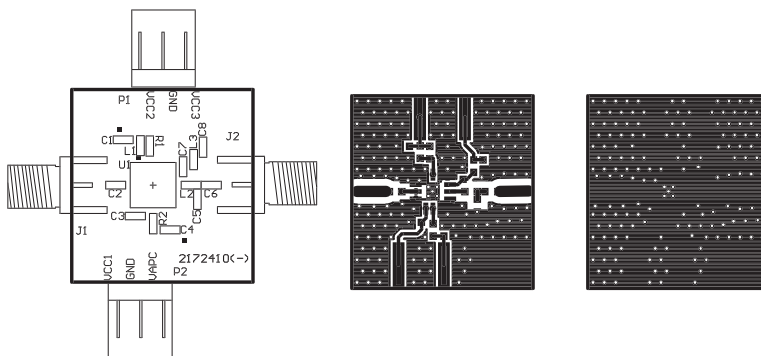
Evaluation Board Schematic - 2.45GHz



Evaluation Board Layout - 915MHz

Board Size 0.80" x 0.85"

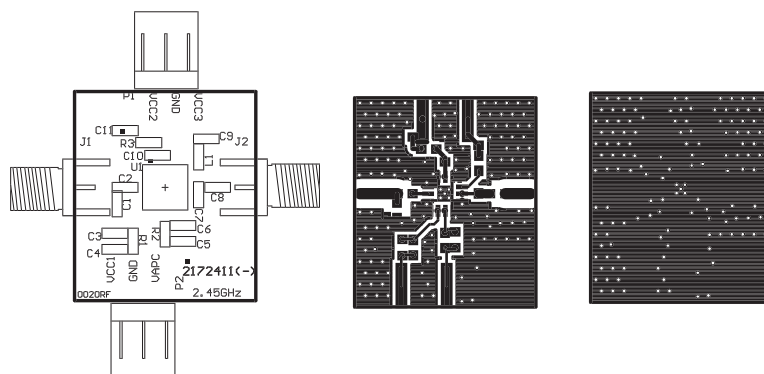
Board Thickness 0.031", Board Material FR-4



Evaluation Board Layout - 2.45GHz

Board Size 0.800" x 0.924"

Board Thickness 0.031", Board Material FR-4



PCB Surface Finish

PCB Land Pattern Recommendation

PCB Metal Land Pattern

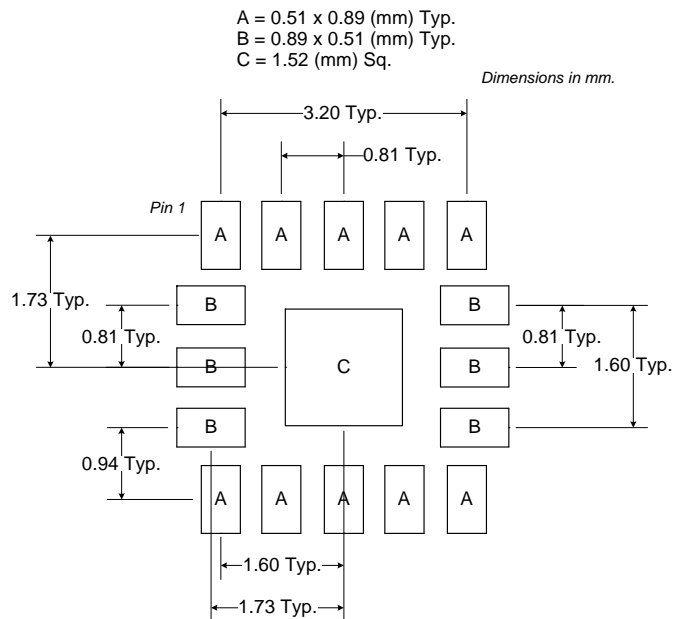


Figure 1. PCB Metal Land Pattern (Top View)

PCB Solder Mask Pattern

Liquid Photo-Imageable (LPI) solder mask is recommended. The solder mask footprint will match what is shown for the PCB metal land pattern with a 2mil to 3mil expansion to accommodate solder mask registration clearance around all pads. The center-grounding pad shall also have a solder mask clearance. Expansion of the pads to create solder mask clearance can be provided in the master data or requested from the PCB fabrication supplier.

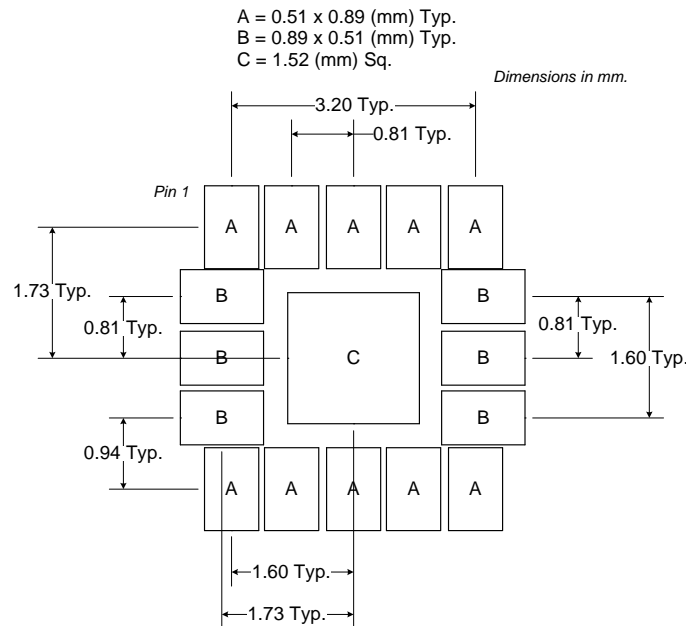


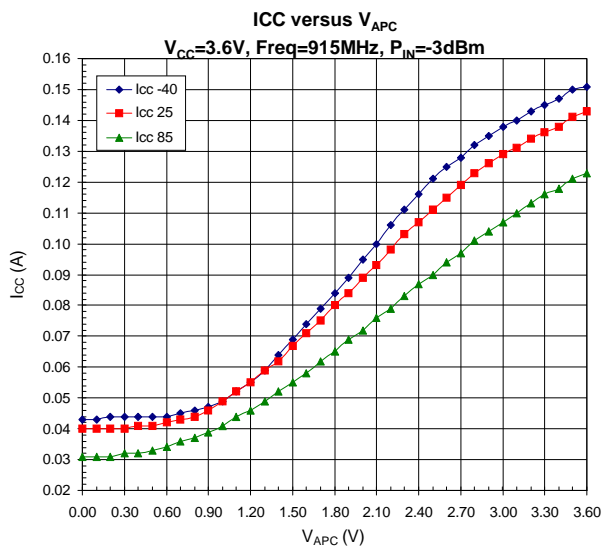
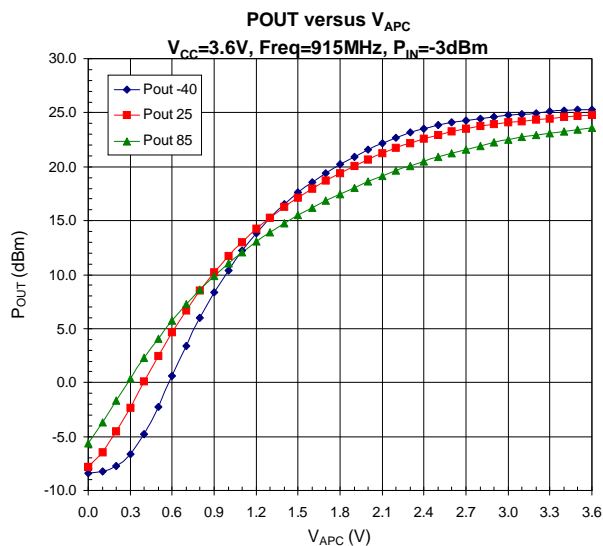
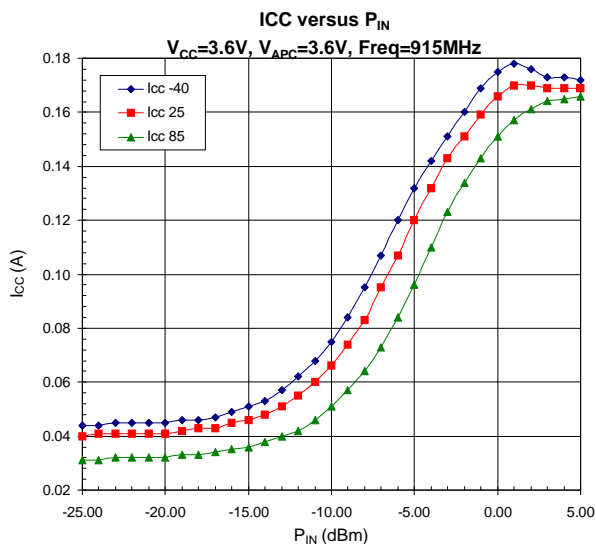
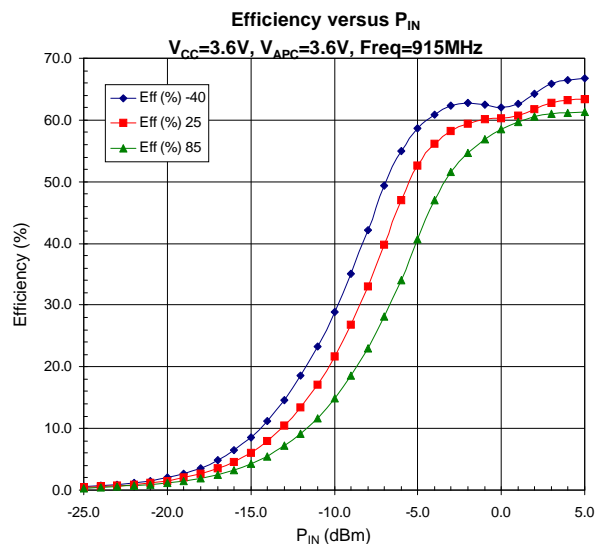
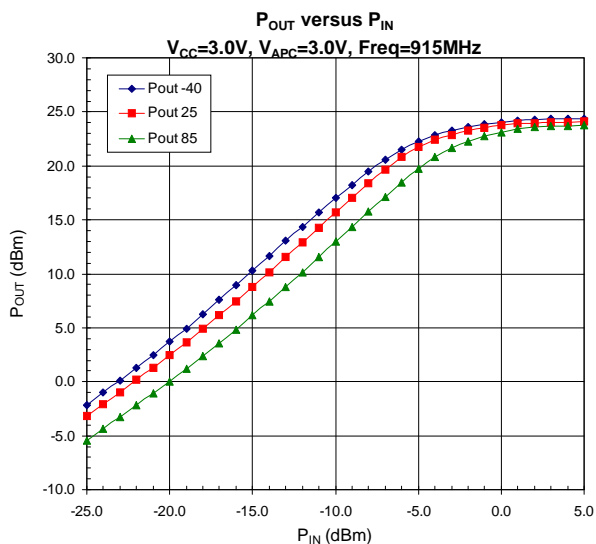
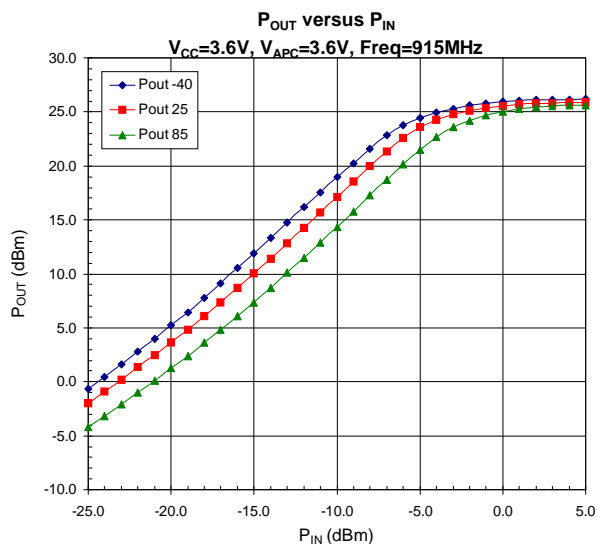
Figure 2. PCB Solder Mask (Top View)

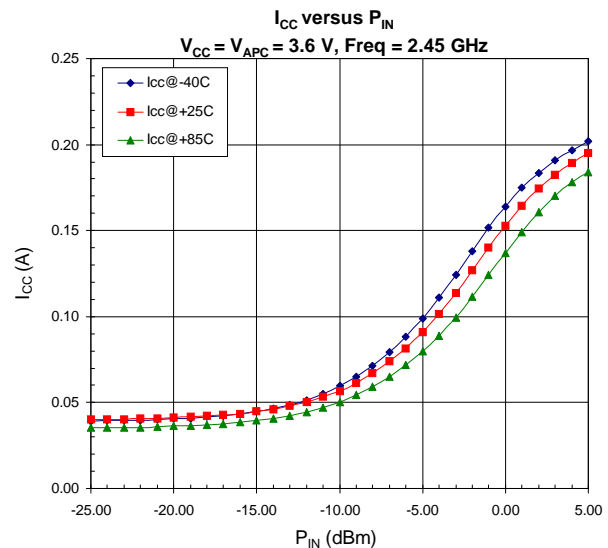
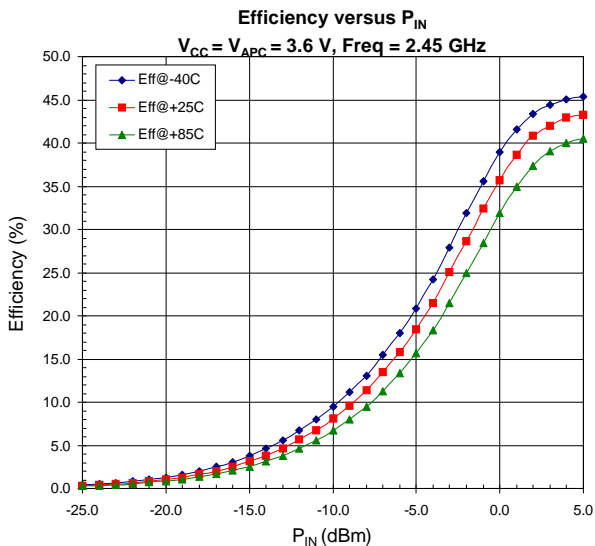
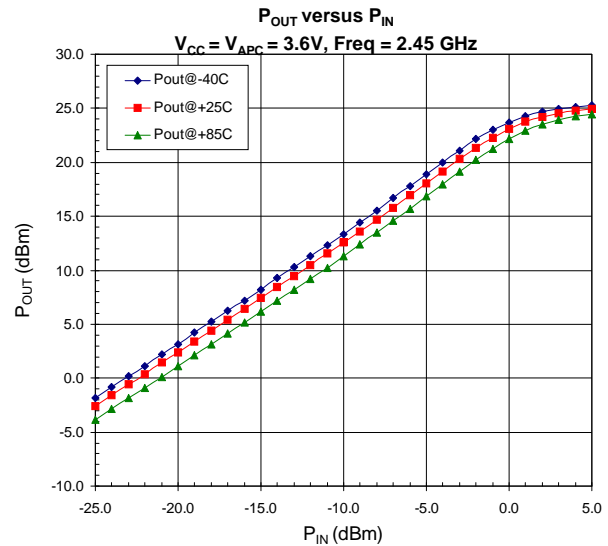
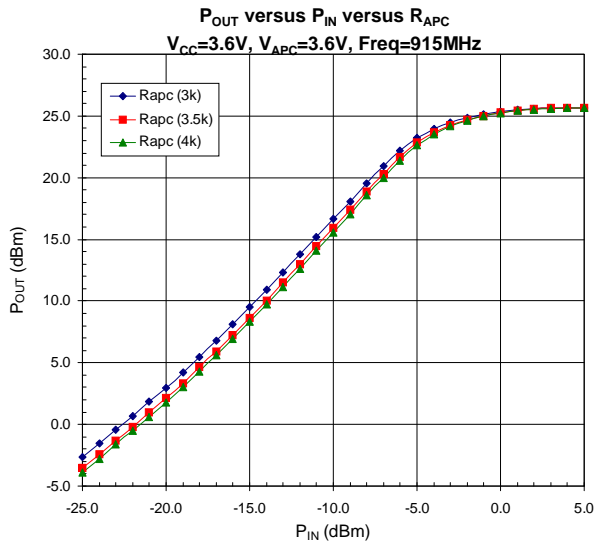
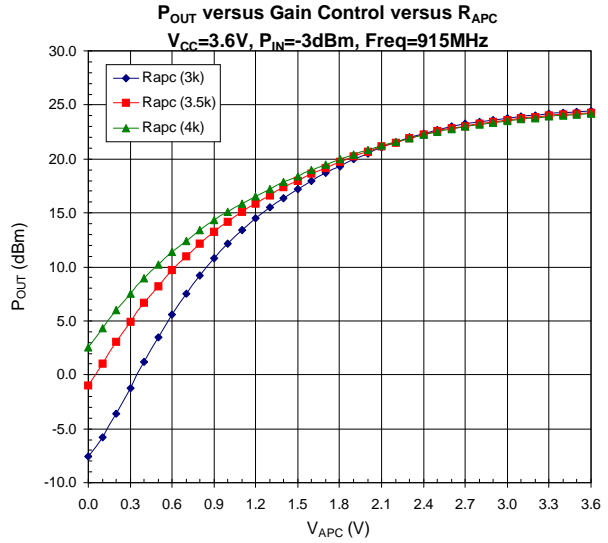
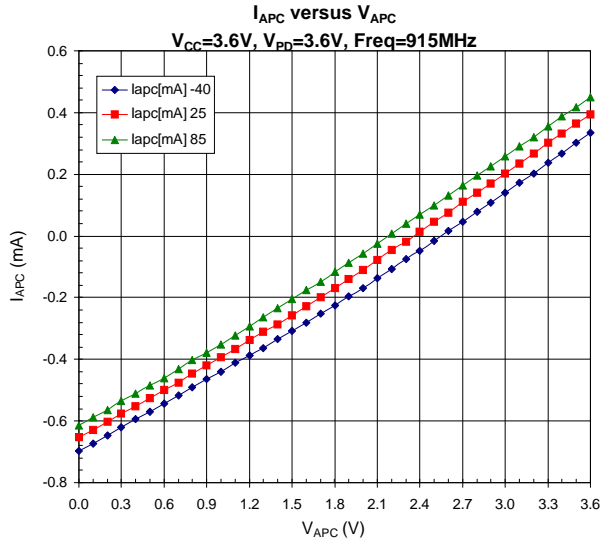
Thermal Pad and Via Design

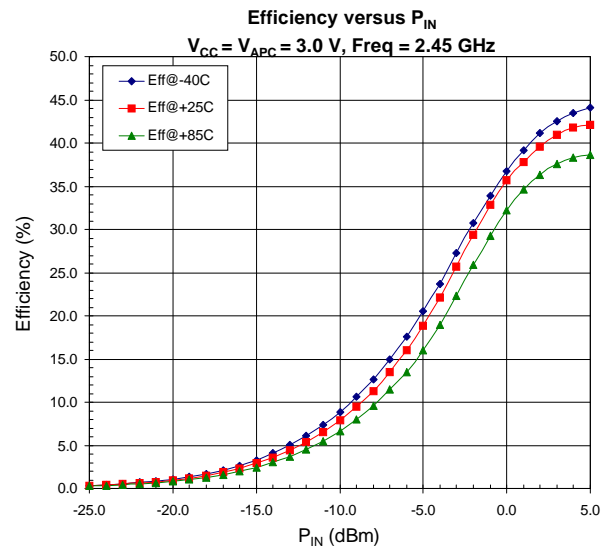
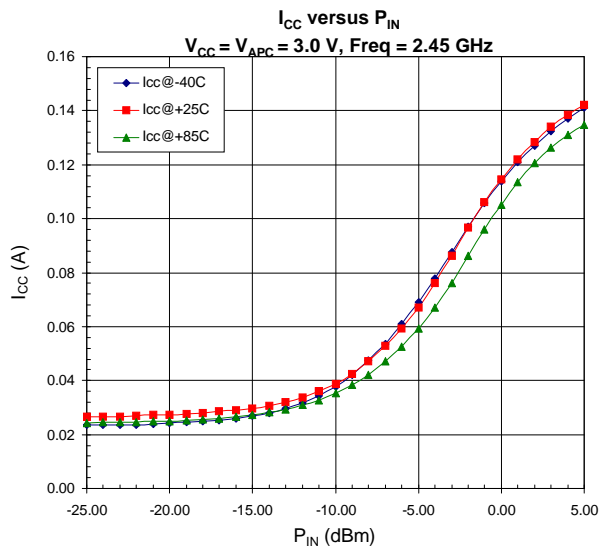
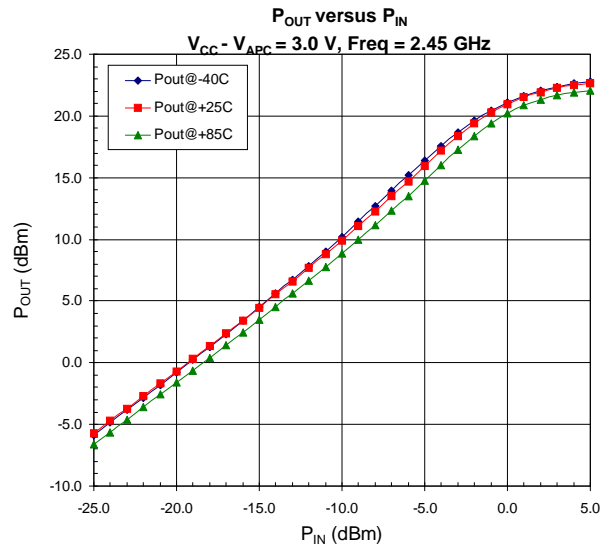
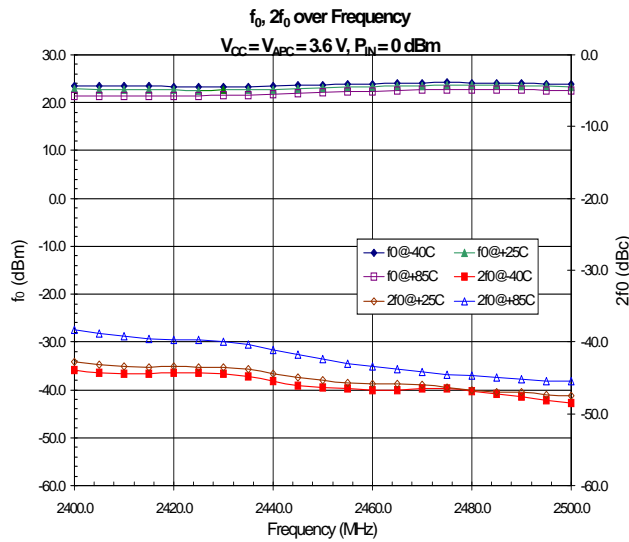
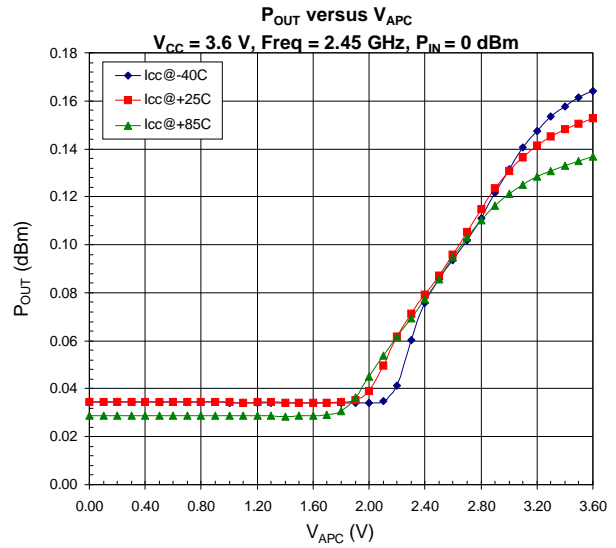
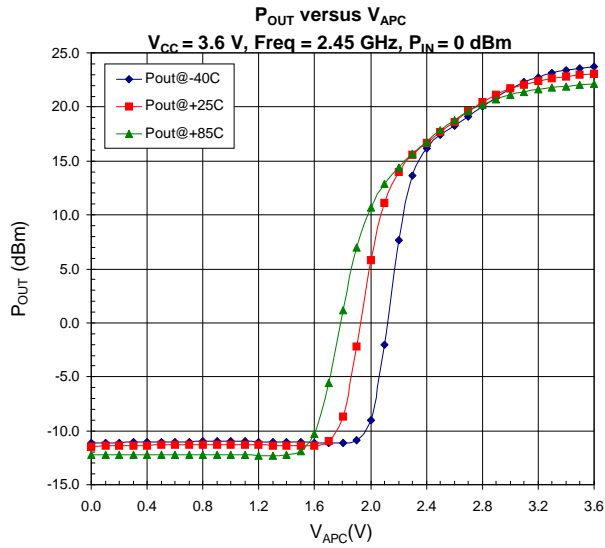
The PCB metal land pattern has been designed with a thermal pad that matches the die paddle size on the bottom of the device.

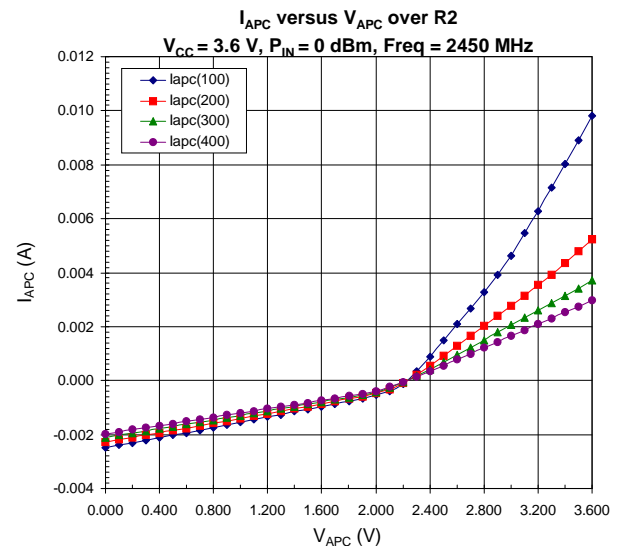
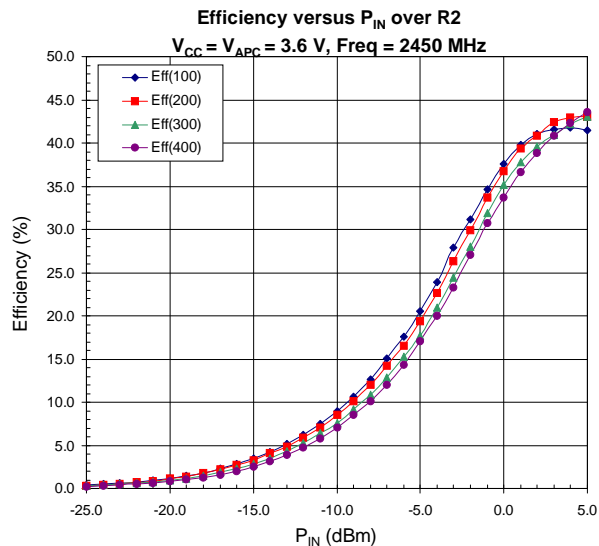
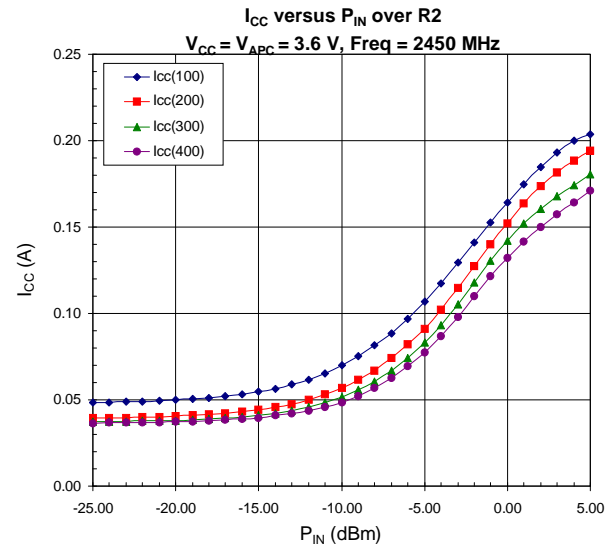
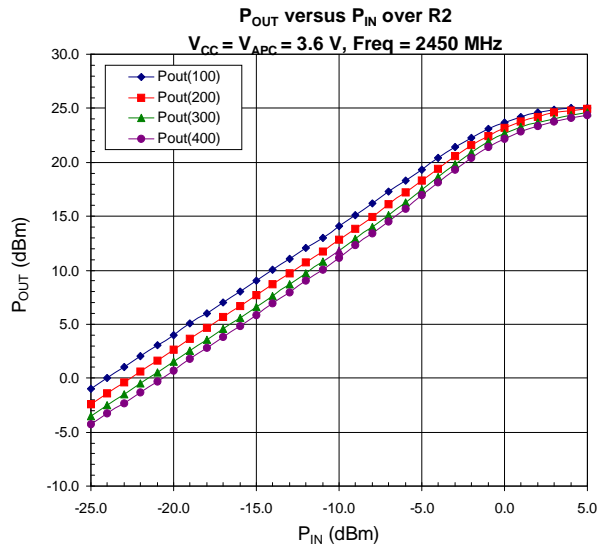
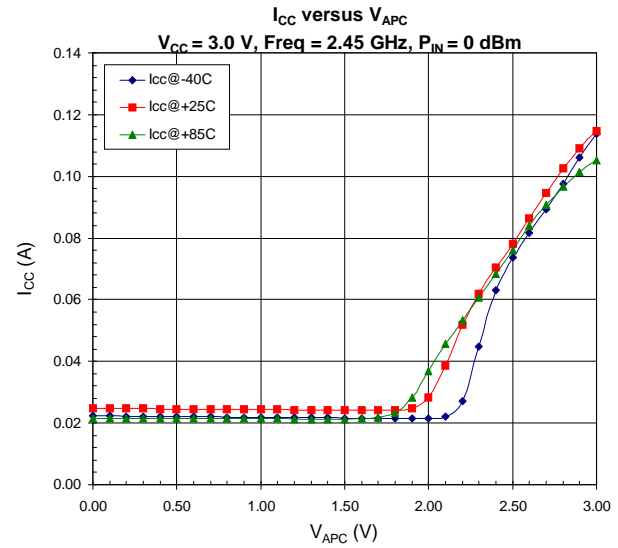
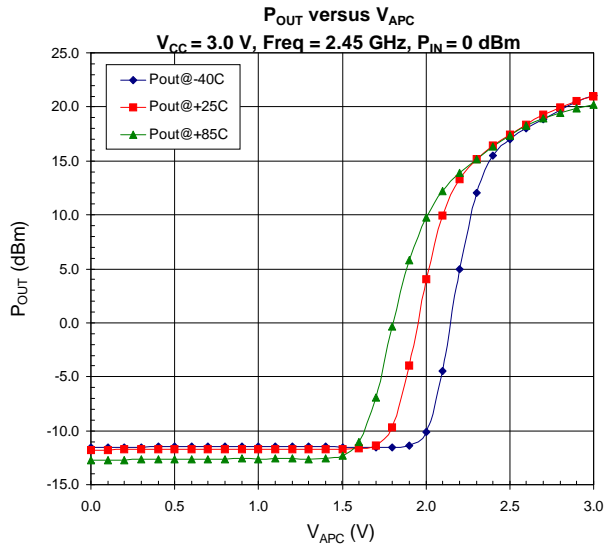
Thermal vias are required in the PCB layout to effectively conduct heat away from the package. The via pattern has been designed to address thermal, power dissipation and electrical requirements of the device as well as accommodating routing strategies.

The via pattern used for the RFMD qualification is based on thru-hole vias with 0.203mm to 0.330mm finished hole size on a 0.5mm to 1.2mm grid pattern with 0.025mm plating on via walls. If micro vias are used in a design, it is suggested that the quantity of vias be increased by a 4:1 ratio to achieve similar results.









RoHS* Banned Material Content

RoHS Compliant: Yes
 Package total weight in grams (g): 0.038
 Compliance Date Code: 0547
 Bill of Materials Revision: A
 Pb Free Category: e3

Bill of Materials	Parts Per Million (PPM)					
	Pb	Cd	Hg	Cr VI	PBB	PBDE
Die	0	0	0	0	0	0
Molding Compound	0	0	0	0	0	0
Lead Frame	0	0	0	0	0	0
Die Attach Epoxy	0	0	0	0	0	0
Wire	0	0	0	0	0	0
Solder Plating	0	0	0	0	0	0

This RoHS banned material content declaration was prepared solely on information, including analytical data, provided to RFMD by its suppliers, and applies to the Bill of Materials (BOM) revision noted above.

RoHS (Restriction of Hazardous Substances): Compliant per EU Directive 2011/65/EU.

Ordering Information

Ordering Code	Description
RF2172	Standard 25 piece bag
RF2172SR	Standard 100 piece reel
RF2172TR7	Standard 750 piece reel
RF2172TR13	Standard 2500 piece reel
RF2172PCK-411	Fully assembled evaluation board tuned for 2.4GHz to 2.5GHz and 5 loose sample pieces
RF2172PCK-410	Fully assembled evaluation board tuned for 902MHz to 928MHz and 5 loose sample pieces