

Plug Top Power Adaptors



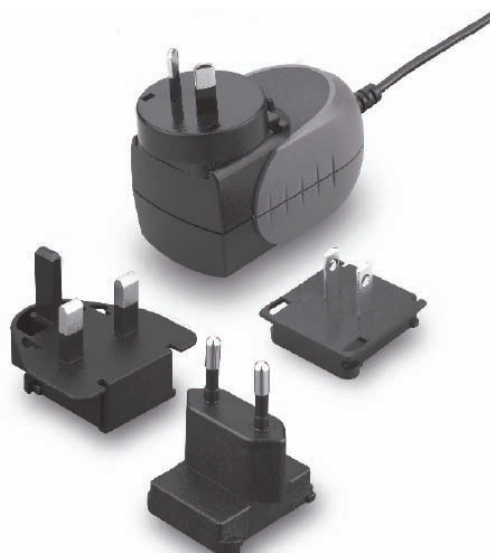
www.powersolve.co.uk

PPT15E Series 15 Watt Switch Mode Universal AC Input

The PPT15E series of CEC level IV compliant AC-DC Power Adaptors offer user interchangeable AC input plugs to enable operation in many different countries. Adaptors can be ordered with up to 4 different interchangeable plugs to meet the power socket requirements of most countries.

Features

- Universal input range 90-264VAC
- Over Current & Continuous Short Circuit Protection
- Meets EN55022 Class B
- CEC Level IV Compliant (Output Cable Length $\leq 1800\text{mm}$)
- Optional Output Connector



Electrical Specification

INPUT

Input Voltage Range	90 - 264Vac
Frequency	47 - 63Hz
Input Current	0.4A max.
Inrush Current	50A max. @ 240Vac
Conducted EMI	EN55022 Class B
Isolation - Input/Output	4,242VDC
Leakage Current	0.25mA max.

OUTPUT

Hold-up Time	10mS typ. @ 115Vac
Short Circuit Protection	Continuous (Auto Recovery)
Over Voltage Protection	Yes

ENVIRONMENTAL

Operating Temperature Range	0°C to +40°C
Storage Temperature Range	-20°C to +85°C
Cooling	Natural convection

GENERAL

Safety Approvals	cUL/UL 60950, TUV EN60950
Dimensions	80.60 x 47.90 x 43.30 mm 3.173 x 1.885 x 1.705 inches
Weight	150g

Output Voltage and Current Ratings

MODEL	OUTPUT VOLTAGE	OUTPUT CURRENT Min.	OUTPUT CURRENT Max.	RIPPLE & NOISE	VOLTAGE ACCURACY	LINE REG.	LOAD REG.	% EFF.
PPT15E-050	5V	0A	2000mA	1%	$\pm 3\%$	$\pm 1\%$	$\pm 4\%$	70%
PPT15E-060	6V	0A	1700mA	1%	$\pm 2\%$	$\pm 1\%$	$\pm 3\%$	71%
PPT15E-090	9V	0A	1400mA	1%	$\pm 2\%$	$\pm 1\%$	$\pm 2\%$	76%
PPT15E-120	12V	0A	1100mA	1%	$\pm 2\%$	$\pm 1\%$	$\pm 2\%$	78%
PPT15E-150	15V	0A	1000mA	1%	$\pm 2\%$	$\pm 1\%$	$\pm 2\%$	77%
PPT15E-180	18V	0A	830mA	1%	$\pm 2\%$	$\pm 1\%$	$\pm 2\%$	79%
PPT15E-240	24V	0A	625mA	1%	$\pm 2\%$	$\pm 1\%$	$\pm 2\%$	80%

- NOTE:**
1. Voltage set point at 60% full load.
 2. Output noise and ripple measured with 10 μF electrolytic & 0.1 μF ceramic capacitors across output at 20MHz BW.
 3. Line regulation is measured from 100Vac to 240Vac at full load.
 4. Load regulation is measured from 60% to full load and from 60% to 20% load (60% \pm 40% load).

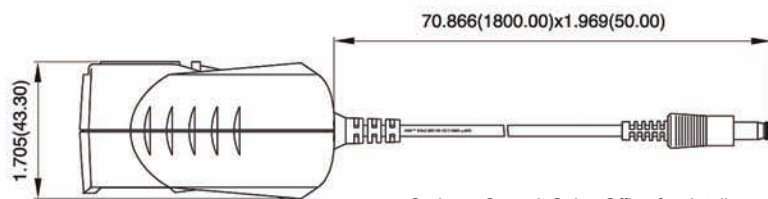
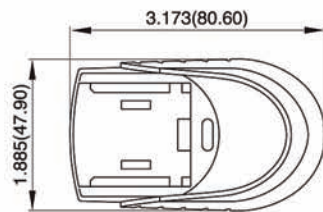
Plug Top Power Adaptors

**POWER
SOLVE**

www.powersolve.co.uk

Mechanical Details

All Dimensions in Inches(mm)
Tolerance Inches: x.xxx= ± 0.02
Millimeters: x.xx= ± 0.5



Options: Consult Sales Office for details
Alternative output connectors available
In-line ferrite core on output cable

