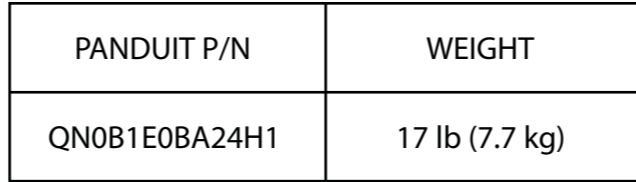


NOTES:  
1. IDENTIFICATION: VERTICAL, (24) 6-20R  
NETWORKED & ENVIRONMENTAL MONITORED  
208V / 20A / SINGLE-PHASE POU



<u>PART NO.</u>	<u>COLOR</u>
QN0B1E0BA24H1	BLACK

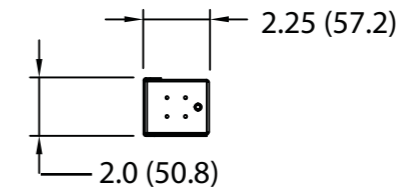
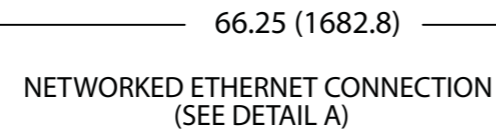
3. DIMENSIONS IN PARENTHESES ARE METRIC (mm).

5. UL® & c-UL® LISTED 60950.

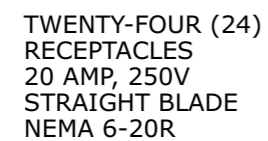
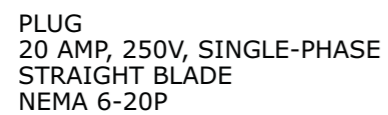
6. RoHS COMPLIANT.

7. VISIT OUR ON-LINE CATALOG AT [WWW.PANDUIT.COM](http://WWW.PANDUIT.COM) FOR A CURRENT LIST OF PRODUCTS APPLICABLE FOR USE WITH THIS PART.

8. MAXIMUM AVAILABLE POWER = 3.3 KW



— 10 FOOT INLET POWER CORD



00A	2-7-11	MAV	KRKE	RELEASED TO PRODUCTION	09V098PI				
REV	DATE	BY	CHK	DESCRIPTION	ECN - R	CUST	SUP	OTH	

MODEL FILENAME		09V098PI/00.PRT	
CAD FILENAME/LAYERS		09V098PI_DC/00A.PRT	
<div>PANDUITCORP</div> <div>TINLEY PARK, ILLINOIS</div>			
VERTICAL, (24) 6-20R NETWORKED & ENVIRONMENTAL MONITORED POWER OUTLET UNIT (QN0B1E0BA24H1) CUSTOMER DRAWING			
UNLESS OTHERWISE SPECIFIED, DIMENSIONAL TOLERANCES ARE:		UNLESS OTHERWISE SPECIFIED,	
INCHES	[METRIC - MILLIMETER]	ANGLE	
X.X +/- 0.03	X. +/- 0.8	ALL DIMENSIONS ARE GIVEN IN	
X.XX +/- 0.015	X.X +/- 0.4	INCHES, THIRD ANGLE PROJECTION	
X.XXX +/- 0.005	X.XX +/- 0.13		
DRAWN BY MAV		SCALE NONE	
DATE 2-7-11		DRAWING NO. 09V098PI	
CHK'D KRKE		DWG B	