

10 mm GS Sensors

Type: **EVWAE/EVWAD**

Low profile, long life sensor, which is suitable for detecting the angles of rotating axes.



■ Features

- Low profile (H=2.2 mm),
Shaft hole diameters of up to 4 mm are available.
- Long operation life: 1 million operation cycles.
- A wide electrical output angle of a maximum 343 °,
ready for SMDs

■ Recommended Applications

- Detection of robot joint angles
- Detection of air conditioner damper angles
- Detection of various control unit angles

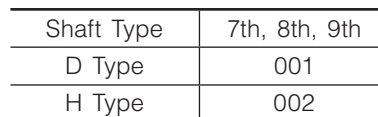
■ Explanation of Part Numbers

1	2	3	4	5	6	7	8	9	10	11	12				
E	V	W	A	E/D					B						
Product Code			Specification						Taper & Resistance						
						Shaft Type		7th, 8th, 9th							
						D hole Type		001							
						H hole Type		002							

■ Specifications

Mechanical	Rating	0.05 W, 5V
	Operating Force	3 mN·m max.
Electrical	Total Resistance	5 kΩ±30 %, 10 kΩ±30 %
	Linearity	±2 % max.
Endurance	Operating Life	1,000,000 cycles min. (operation Angle ±30°)
Minimum Quantity/Packing Unit		1,500 pcs. Embossed Taping (Reel Pack)
Quantity/Carton		6,000 pcs.

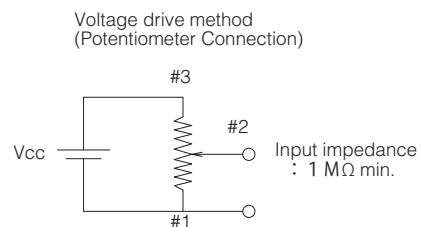
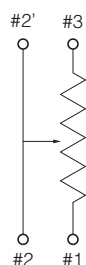
No. 1	General dimension tolerance : ± 0.3 () dimensions are reference dimensions.
EVWA	
With sleeve Type	



Shaft Type	7th, 8th, 9th
D Type	001
H Type	002

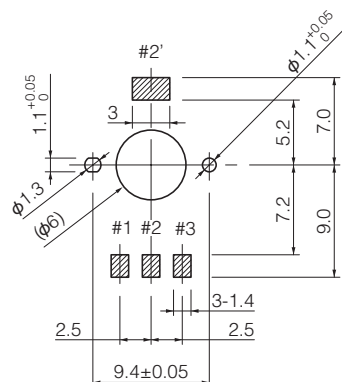
ANCTB58E 201704-Fd

■ Test circuit diagram



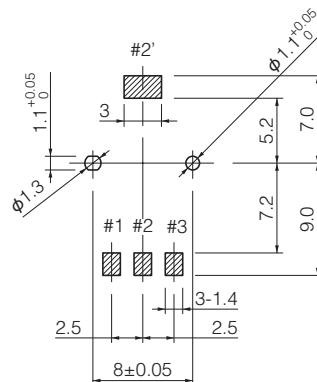
■ PWB mounting hole for reference

With sleeve Type



(Pitch tolerance : ± 0.1)
View from mounting side

Without sleeve Type



(Pitch tolerance : ± 0.1)
View from mounting side

Panasonic Corporation Electromechanical Control Business Division
industrial.panasonic.com/ac/e/