

REF. NO. : _____

TOTAL NO. OF PAGES :
(INCLUSIVE THIS PAGE)

共 5 页

SHANGHAI MOONS' AUTOMATION CONTROL CO.LTD
SPECIFICATIONS FOR APPROVAL

MODEL: _____ MU096I210AQI12

CUSTOMER : _____

CUSTOMER P/N : _____

DATE: _____ 2016.05.16

CUSTOMER'S APPROVAL ITEMS

ITEM 1 SPECIFICATIONS(MSSD-5483 A0) 4 Pages

CUSTOMER'S APPROVAL STAMP

SHANGHAI MOONS'
R&D DEPARTMENT

APPD.	CHK.	DWG.

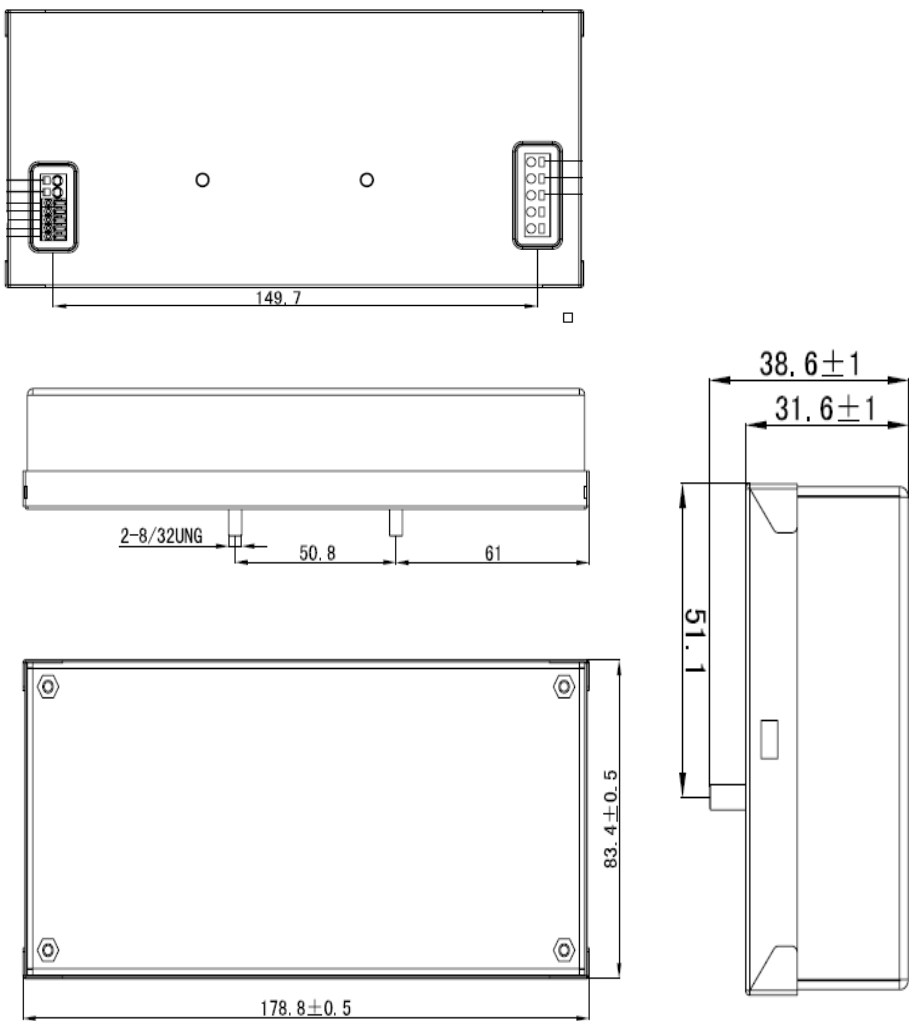
Features:

- Model MU096I210AQI12
- Compliant with Class 2 Power supply safety standards
- Support isolated 0~10V dimming
- 1 LED channel, 100% dimming output current can be set to from 200mA to 2100mA
- Constant power maximum is 96W
- Normal life time is 50000 hours （at the case's temperature of 70℃）
- Soft light dimming range 0.1%~100%
- For linear dimming curve,the minimum dimming level is 0.1%
- For logarithmic dimming curve,the minimum dimming level is 0.1%
- Protection compliant with IP20
- 5-year warranty

Electrical Specification:

Rated input voltage range	100 - 277 V
Maximum input voltage range	90 - 305 V
Input voltage frequency	50 / 60 HZ
Input Power (230V,50HZ)	113W
Leakage current	<0.75mA
Output voltage range	34 - 48 V
Efficiency typical value （230V,50HZ,full loaded①）	85 %
Power factor （230V,50HZ,full loaded①）	>0.95
Stand-by power consumption	<0.5W
THD(230V,50HZ,full loaded①）	<13%
Start-up time （230V,50HZ,full loaded）	<1S
Start-up time （120V,50HZ,full loaded）	<1S
The maximum setup current precision	± 5%
Ripple current (full loaded)	± 15%
Input inrush current	<65A
Dimming range	0.1 -100%
Withstand Voltage I/P-O/P	3750 V
Withstand Voltage I/P-FG	1875 V
Withstand Voltage O/P-FG	500V
Surge L/N-earth, L-N	2KV,1KV
Operating Humidity	20~90%RH, non-condensing
Storage Humidity	5%-95%RH, non-condensing
Ambient Temperature	-25...52℃
Case Temperature	87℃
Weight	520g
Reference dimension	178.8×83.4×31.6

① Load:48V*2000mA



Standard:

UL8750,UL1310,	EN61000-4-2	EN61000-4-11
EN61347-1,EN61347-2-13	EN61000-4-3	EN61547
EN55015	EN61000-4-4	
FCC Part 15 Class B	EN61000-4-5	
EN61000-3-2	EN61000-4-6	
EN61000-3-3	EN61000-4-8	

Functions

- **MCS technology**

Connect Smartkey to the driver through MCS(Multifunctional Configuration Settings) ports. With MOONS' Configurator software, you can set the MAX current of the driver(each step is 1 mA),dimming curve type, etc.
Please refer to specification of Smartkey to get specific information.

- **Temperature Detection**

In order to protect the LED, the temperature of LED is detected by a NTC^①. When the temperature exceeds the point which can be set by Smartkey, the output current can be decreased automatically, but not less than 25%.

- **Constant Output Power**

The driver can satisfy the curve of constant output power within a large range of output current and voltage.

- **Protection**

Thermal Protection

When the temperature of the inside PCB exceeds 110℃, output current will be decreased to 50%. And it cannot recover until the temperture drops to 70℃.

Short-circuit Protection

Once the output short-circuits, the output will be cut off automatically. Then the driver will try to restart every 10s.

No-load Protection

The driver operating with no load will not be damaged, and it will try to restart every 10s. So the driver supports hot plugin.

Over-Power Protection

If the total power exceeds 100W, the output current of each channel will decrease to 50%.

- **Online Update**

Connect Smartkey to PC through a USB port, then connect Smartkey to the driver correctly to update.
Please refer to the specification of Smartkey.

- **Daisy-Chain**

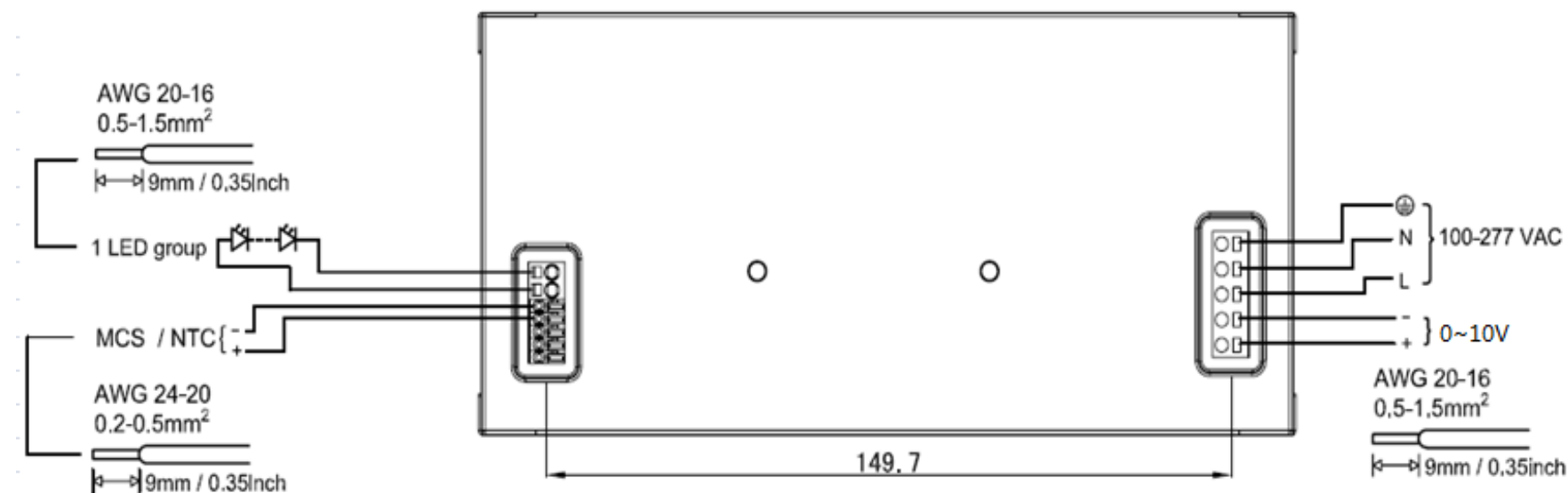
0-10V dimming ports has 2 groups of 0-10V+ and 0-10V-, which support daisy-chain.

①Recommended manufacture and type of the NTC

Manufacture: Thinking

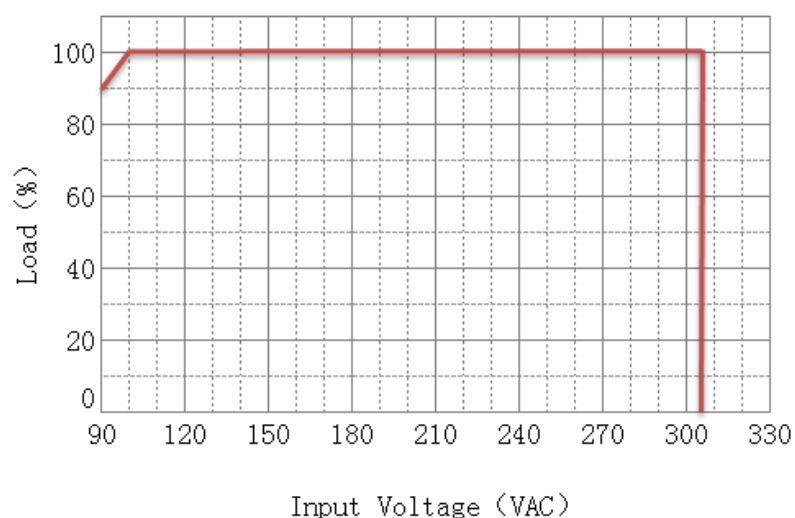
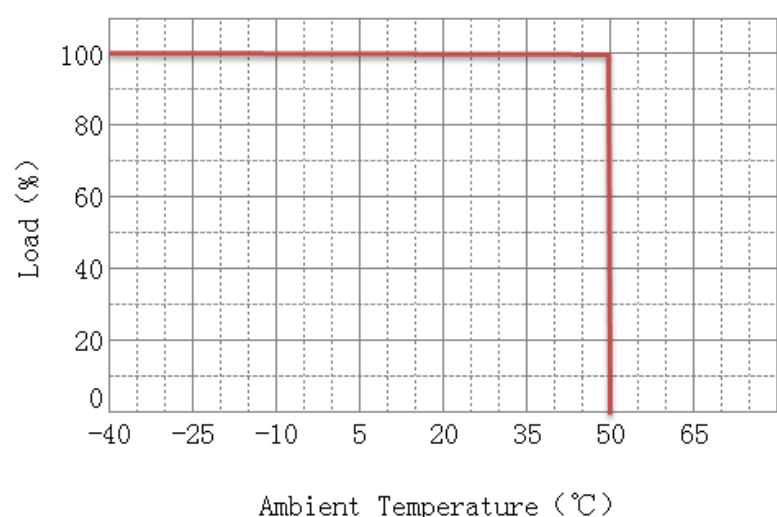
Type: TSM2A473J409ARZA(SMD) \ VISHAY NTCS0805e4473JXT \ MURATA NCP21WB473J03RA

Ports

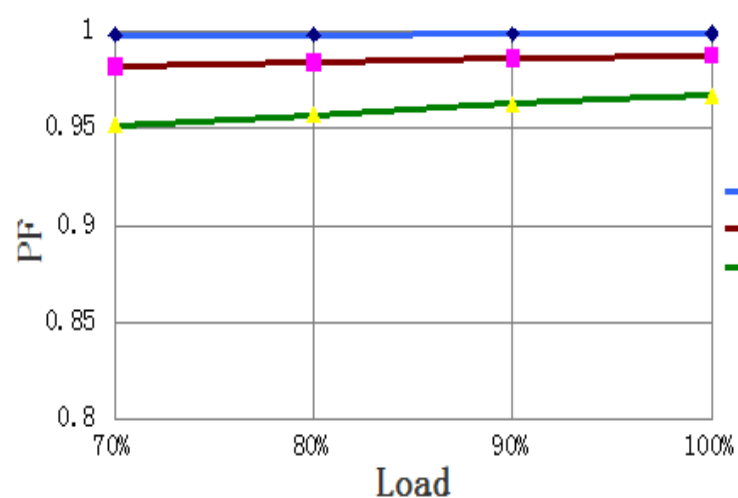


Test curve

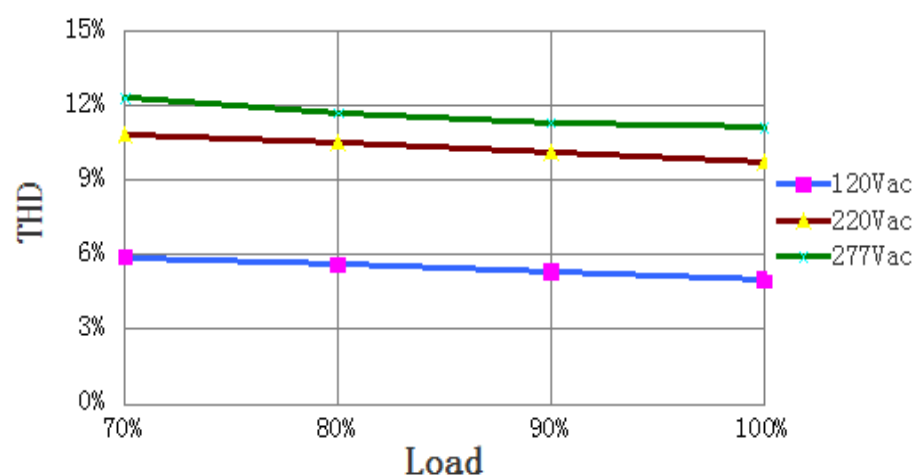
Derating Curve



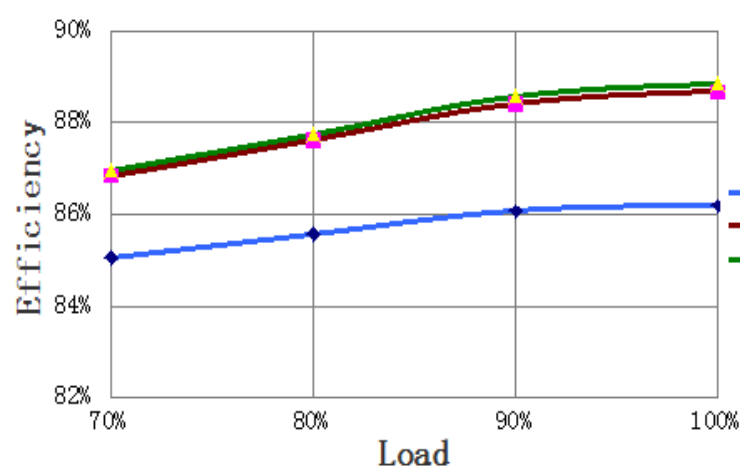
Power Factor Curve



Current Total Harmonic Curve

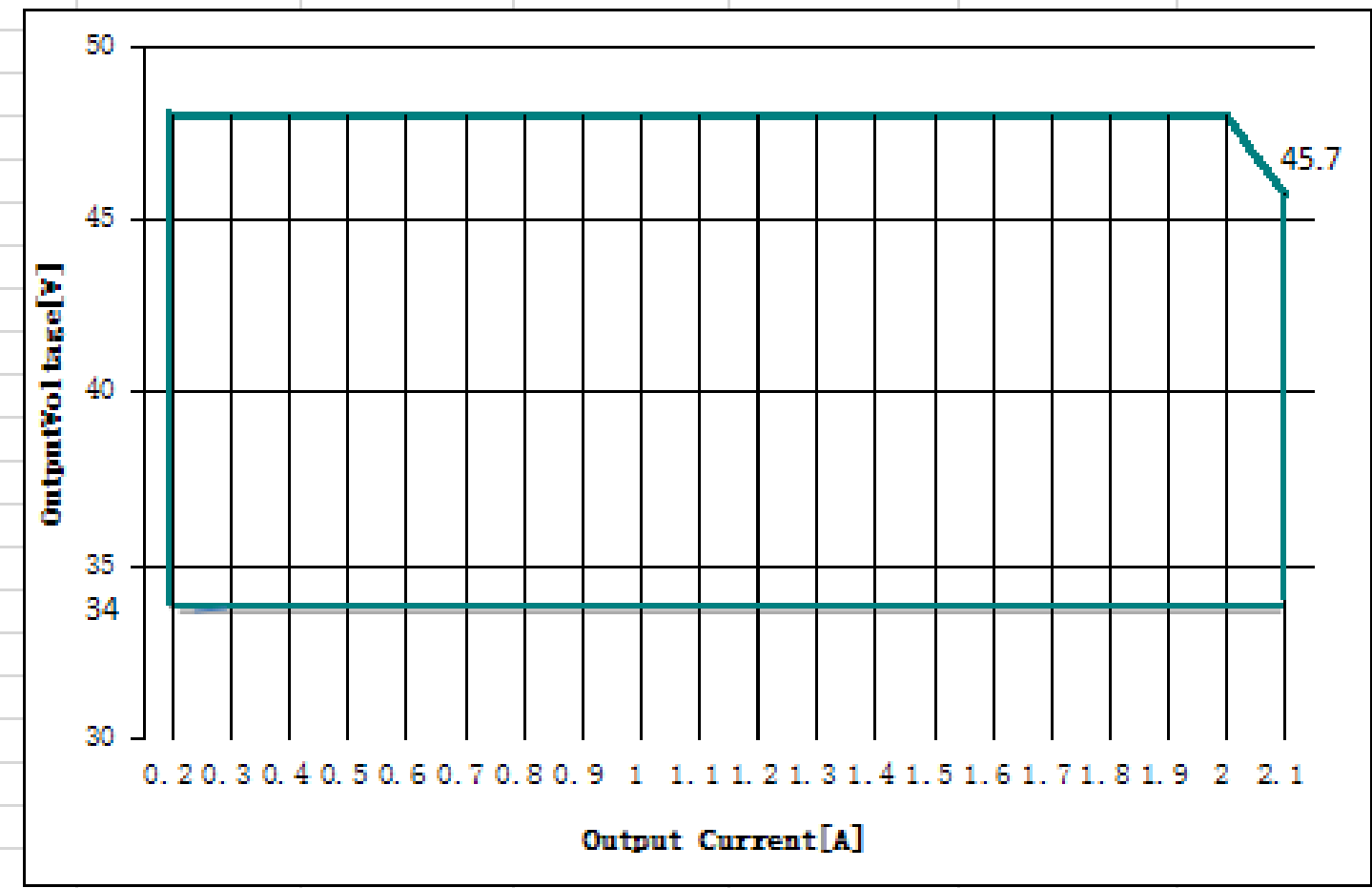


Efficiency Curve



Test curve

V/I OPERATING RANGE



Lifetime VS.Tcase

