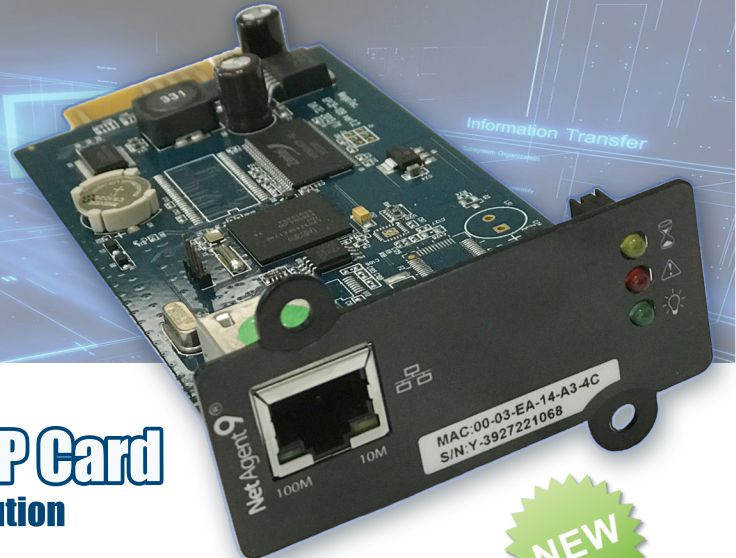


WE GO THE DISTANCE FOR YOU



NetAgent 9 SNMP Card

Trusted & Reliable UPS Solution



PRODUCT INFO

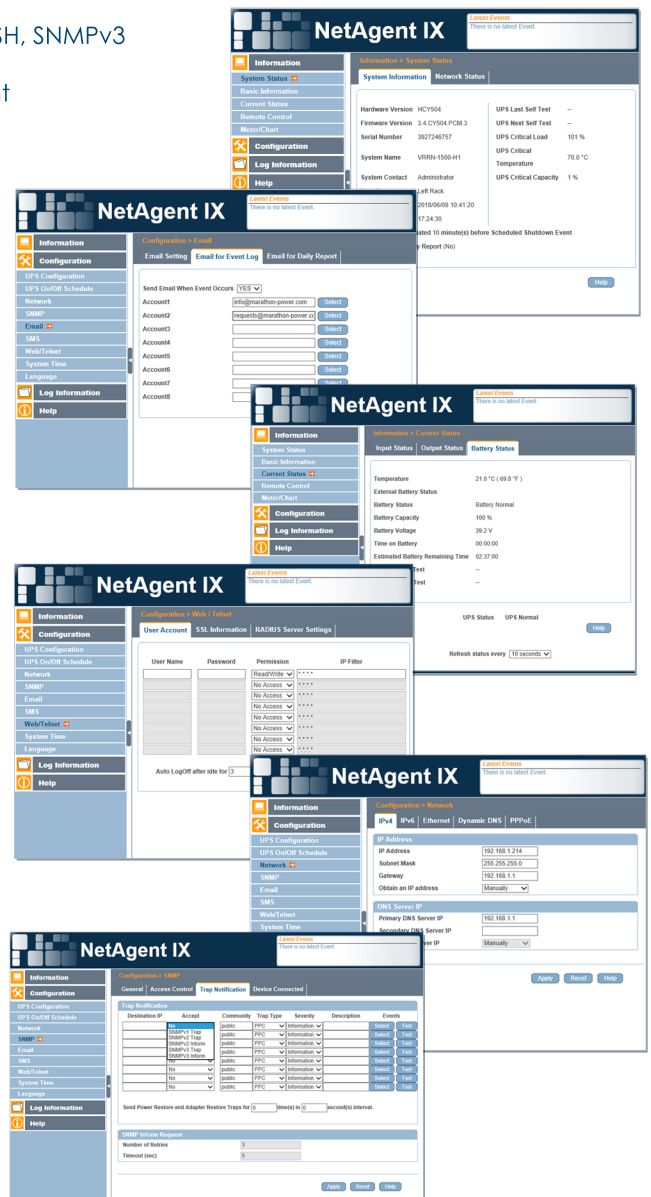
- Support advance encryption: HTTPS, SSL, SSH, SNMPv3
- Centralized UPS Monitoring & Management
- Supports UPS MIB, RFC1628, PPC MIB
- Supports centralized authentication
- Supports MODBUS
- Real-time UPS monitoring
- Schedule periodic UPS self-test
- Record event / data log

Select Event	YES	NO
Schedule Shutdown Event	<input type="radio"/>	<input type="radio"/>
UPS Failure	<input type="radio"/>	<input type="radio"/>
UPS entering Test mode	<input type="radio"/>	<input type="radio"/>
UPS entering Sleeping mode	<input type="radio"/>	<input type="radio"/>
UPS entering Boost mode	<input type="radio"/>	<input type="radio"/>
UPS Load Overrun	<input type="radio"/>	<input type="radio"/>
UPS Communication Lost	<input type="radio"/>	<input type="radio"/>
Turn Off UPS	<input type="radio"/>	<input type="radio"/>
AC Power Failed	<input type="radio"/>	<input type="radio"/>
UPS Battery Low	<input type="radio"/>	<input type="radio"/>
UPS Temperature Overrun	<input type="radio"/>	<input type="radio"/>
UPS Capacity Underrun	<input type="radio"/>	<input type="radio"/>
UPS entering Bypass mode	<input type="radio"/>	<input type="radio"/>

Selected All Clear All Apply

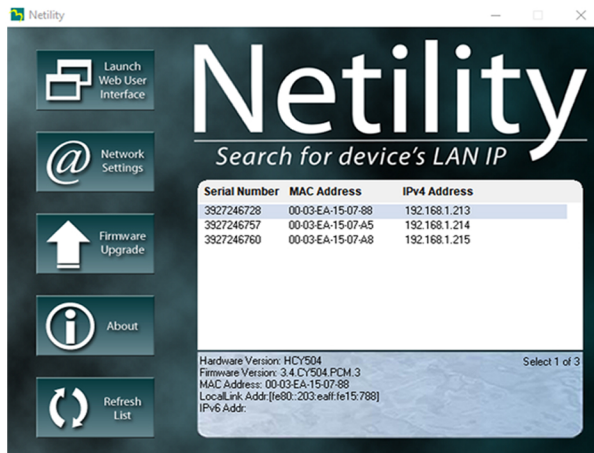
CY504 - Hardware Specifications

Watch Dog	Yes
Real Time Clock	Yes
LAN Interface	10M/100M UTP



Available Software

Netility is tool software that helps the user to search all the available NetAgent within network as well as to configure IP address and firmware upgrade.



SNMPView is a NMS software to remotely monitor and control multiple UPS's with NetAgent. When an event occurs, SNMPView can be programmed to send an email or TRAP to inform the designated network manager. It can also inform the user of the UPS current condition or configuration, perform self-test, send a history file and more. Other third party NMS such as HP OpenView may also be use on by importing our product specific MIB file.

UPS	Host Name	Location	Output Status	Connection Status	Temperature (F/C)	Loading	Output Voltage	Capacity	AC Status	Battery Status
192.168.1.211	TTW09-200-01	Bay 3	AC mode	Connection Normal	63°C (147°F)	31.0	110.1	80%	AC Normal	Battery Normal
192.168.1.212			Off-Line	Off-Line	Off-Line	Off-Line	Off-Line	Off-Line	Off-Line	Off-Line
192.168.1.213	VTW09-100-01	White Puckett	AC mode	Connection Normal	25°C (77°F)	97.0	120.0	100%	AC Normal	Battery Normal
192.168.1.214	VTW09-100-01	Left Rack	AC mode	Connection Normal	22°C (71°F)	0.0	120.2	100%	AC Normal	Battery Normal
192.168.1.215	VTW09-100-01	Right Rack	AC mode	Connection Normal	25°C (77°F)	0.0	120.0	100%	AC Normal	Battery Normal

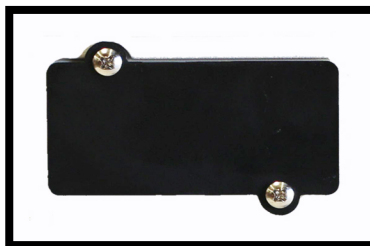
Supported LAN Protocols

TCP/IP, HTTP, HTTPS, SSL, SSH, SMTP, SNMP, DHCP, Telnet, BOOTP, DNS, DDNS, RADIUS, IPv4, IPv6

Supported MIB Objects

PPC MIB, RFC1628, SNMPv1, SNMPv2, SNMPv3

Optional Communication Card Installation



Double Conversion
SNMP-CY54-03



Line Interactive
SNMP-CY54-04



2538 E. 54th Street
Huntington Park, CA 90255
Office: 310-689-2328
Fax: 310-689-2329
sales@marathon-power.com
info@marathon-power.com
www.marathon-power.com

Your local representative / distributor is