



# HIRSCHMANN

A BELDEN BRAND

## Product information GDME LED 24 RD

Industrial Connecting Solutions:Rectangular Connectors:Valve Connectors (Type A -B -C):Type A:Field Attachable Valve Connectors:Electronic inserts for GDME:GDME LED 24 RD

<https://catalog.beldensolutions.com:443/link/57078-24228-256261-256266-256270-276215-24315-35670/en/conf/ui/state>

Name GDME LED 24 RD

function indicator (LED) with freewheeling diode

### Delivery informations

Availability available

### Product description

Description function indicator (LED) with freewheeling diode

Type GDME LED 24 RD

Order No. 831 839-001

Standard DIN EN 175 301-803-A

Construction type A

### Description of Wiring

LED color LED red

### Technical data

Rated voltage AC/DC 24 V

Rated current 8 A

### Environmental conditions

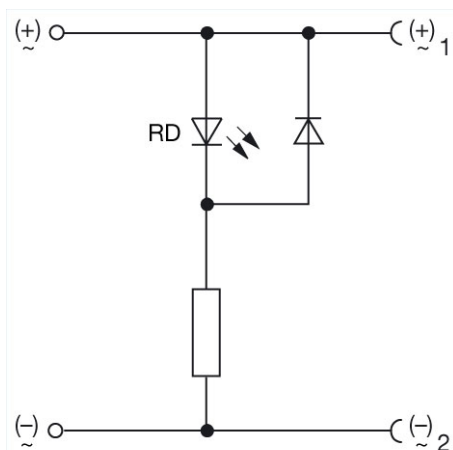
Temperature range -40 °C to +110 °C

### Packing unit

Packaging unit 50 pieces

### Picture

Drawing



○— connection terminal

—C— fork type spring



# HIRSCHMANN

A **BELDEN** BRAND

**Belden Deutschland GmbH**

Im Gewerbepark 2

58579 Schalksmühle

Germany

Phone: +49 7127/14-1806

E-Mail: [icos-sales@belden.com](mailto:icos-sales@belden.com)

The information published in the websites has been compiled as carefully as possible. It is subject to alteration without notice in technical as well as in price-related/commercial respect. The complete information and data were available on user documentation. Mandatory information can only be obtained by a concrete query.