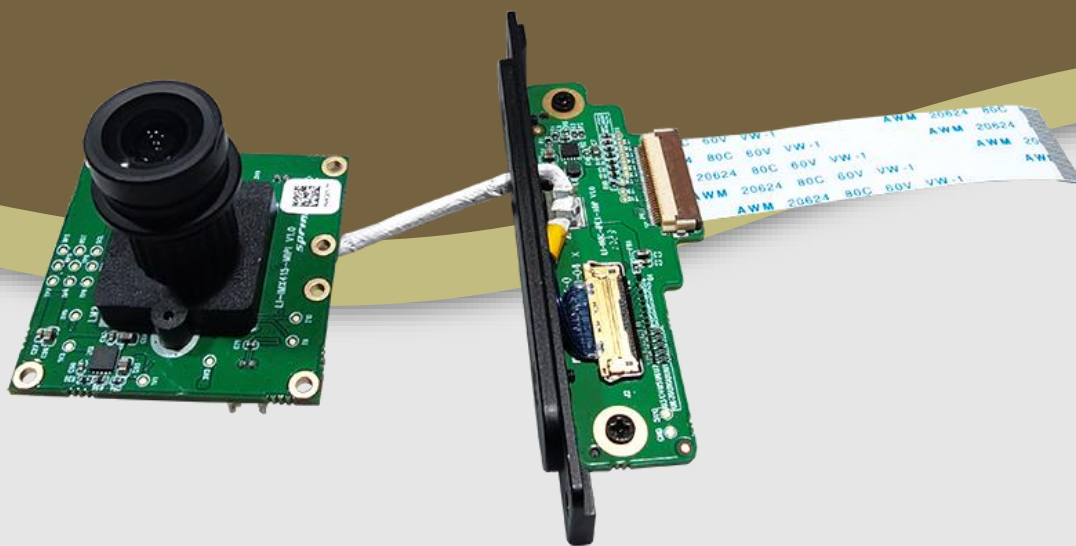




LI-NUC-ADP-IMX415-MIPI-081H

**Address:**

910 Auburn Ct
Fremont, CA 94538
USA

**Phone:**

+1 (408)263-0988

Fax:

+1 (408)217-1960

**Sales:**

sales@leopardimaging.com

Support:

support@leopardimaging.com

KEY FEATURES

- Compatible with Intel® NUC system
- MIPI CSI-2 interface
- Adapter board: LI-NUC-IPEX-ADP
- Sensor: Sony Diagonal 6.43 mm (Type 1/2.8) CMOS Image Sensor IMX415
- Active pixels: 3864 (H) x 2176 (V)
- Power consumption (Intel NUC + LI-NUC-ADP-IMX415-MIPI-081H)

Full resolution @ 30 fps	165 mA @ 3.3 VDC
Standby	21 mA @ 3.3 VDC

- Color camera
- Length of the I-PEX cable: 300 mm
- Supports multiple length cables
- Connector Part# (sensor board): 20525-030E-02
- Allows customization
- Part#: **LI-NUC-ADP-IMX415-MIPI-081H**

APPLICATIONS

- IoT
- Robots
- Camera on Laptop

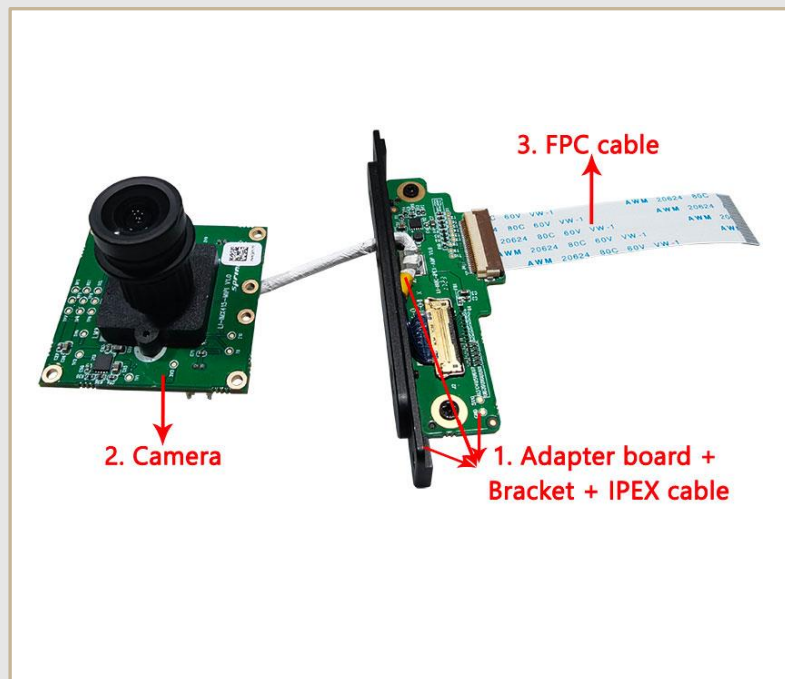
BOM

NOTE: Intel® NUC system is **NOT** included.

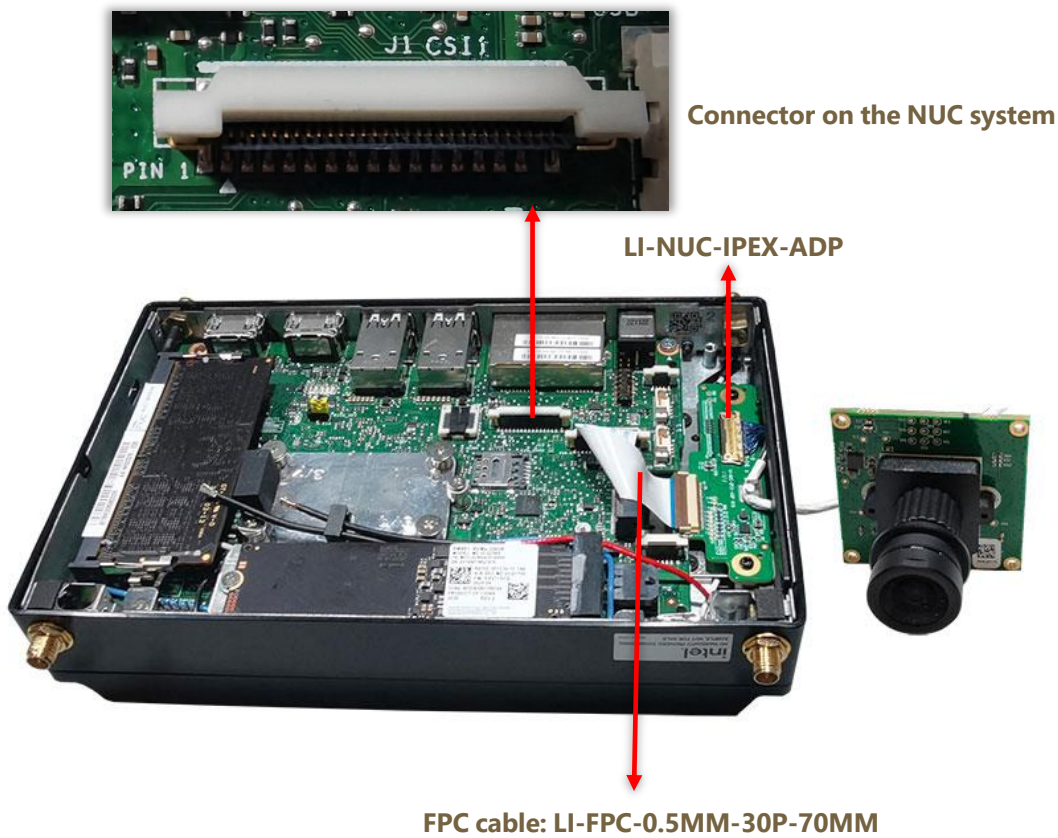
#	Items	Leopard P/N	QTY	Unit
1	Adapter board + Bracket + IPEX cable	LI-NUC-IPEX-ADP-B NOTE: Adapter P/N: LI-NUC-IPEX-ADP IPEX cable P/N: FAW-1233-03	1	Set
2	Camera	LI-IMX415-MIPI-081H	1	Piece
3	FPC Cable	LI-FPC-0.5MM-30P-70MM	1	Piece

LENS SPECIFICATIONS

Effective Focal Length	4.063 mm
Aperture, F/#	2.29 ± 5%
Field of View (FOV)	81.7° horizontal
	44.7° vertical
	95.1° diagonal
Optical Distortion	-28.1%
TV Distortion	-9.3%
Relative Illumination	59.1%
IR Filter	650 nm IR cut filter
Lens Mount	M12 x 0.5



CABLE CONNECTION (Deployment Inside)



NOTE:

- Intel® NUC system is **NOT** included
- Connector on the Intel® NUC system to FPC cable: **J1 CSI1**
- Connector on the LI-NUC-IPEX-ADP to FPC cable: **FH12-30S-0.5SH (55)**
- Connector on the LI-NUC-IPEX-ADP to camera: **20525-030E-02**
- Either side of the FPC cable could be connected to the NUC system or the LI-NUC-IPEX-ADP
- While installing, please refer to the following:

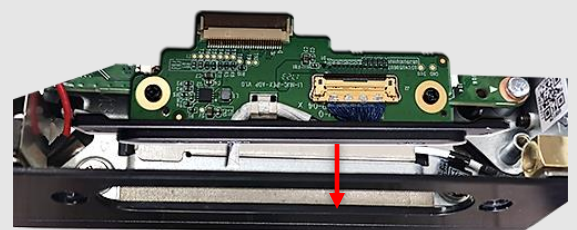


1. Uninstall original plate on the NUC.



2. Assemble the adapter board, bracket, IPEX cable and FPC cable together.

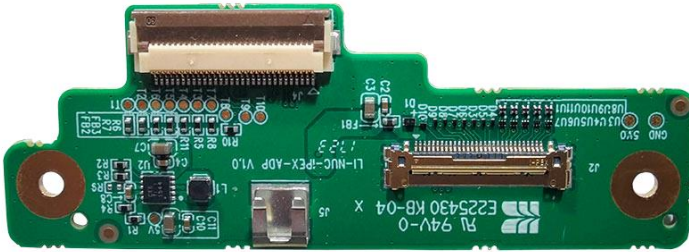
3. Install the assembled to the NUC. Then, connect the camera.



● CABLE CONNECTION (Viewing from Outside)



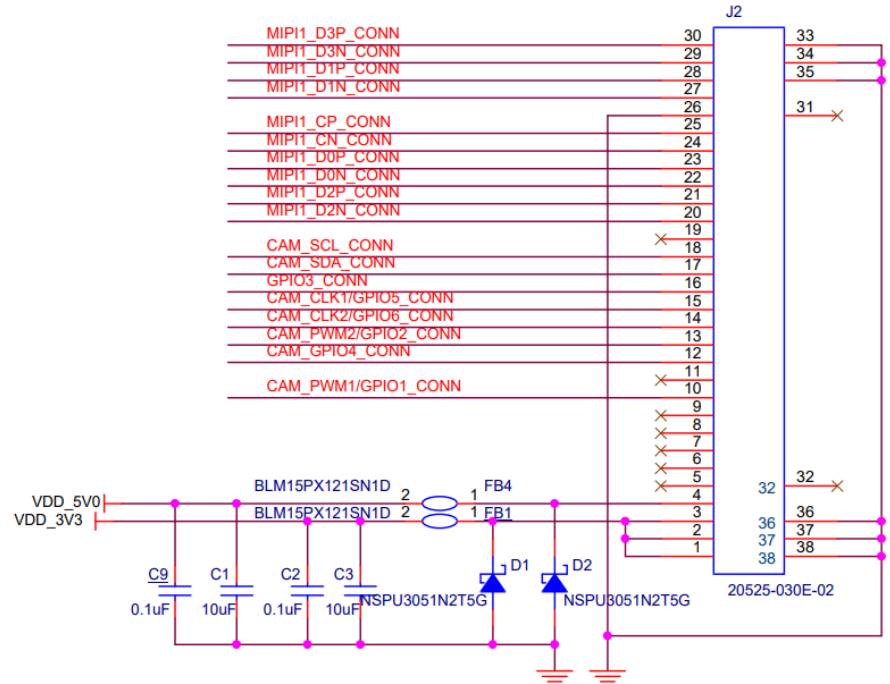
LI-NUC-IPEX-ADP



INTERFACES

Interface J2 (To Camera)

- Part#: 20525-030E-02
- Number of Positions: 30
- Pitch: 0.4 mm
- Mating I-PEX Cable: FAW-1233-XX

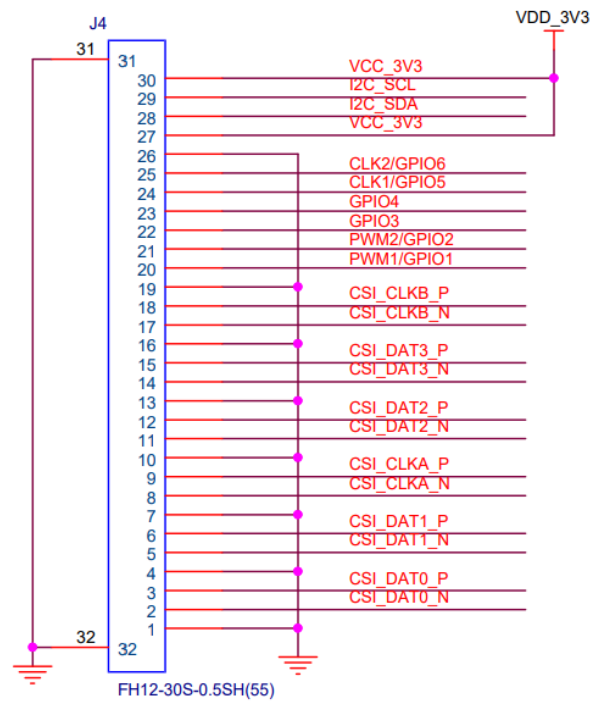


LI-NUC-IPEX-ADP

INTERFACES

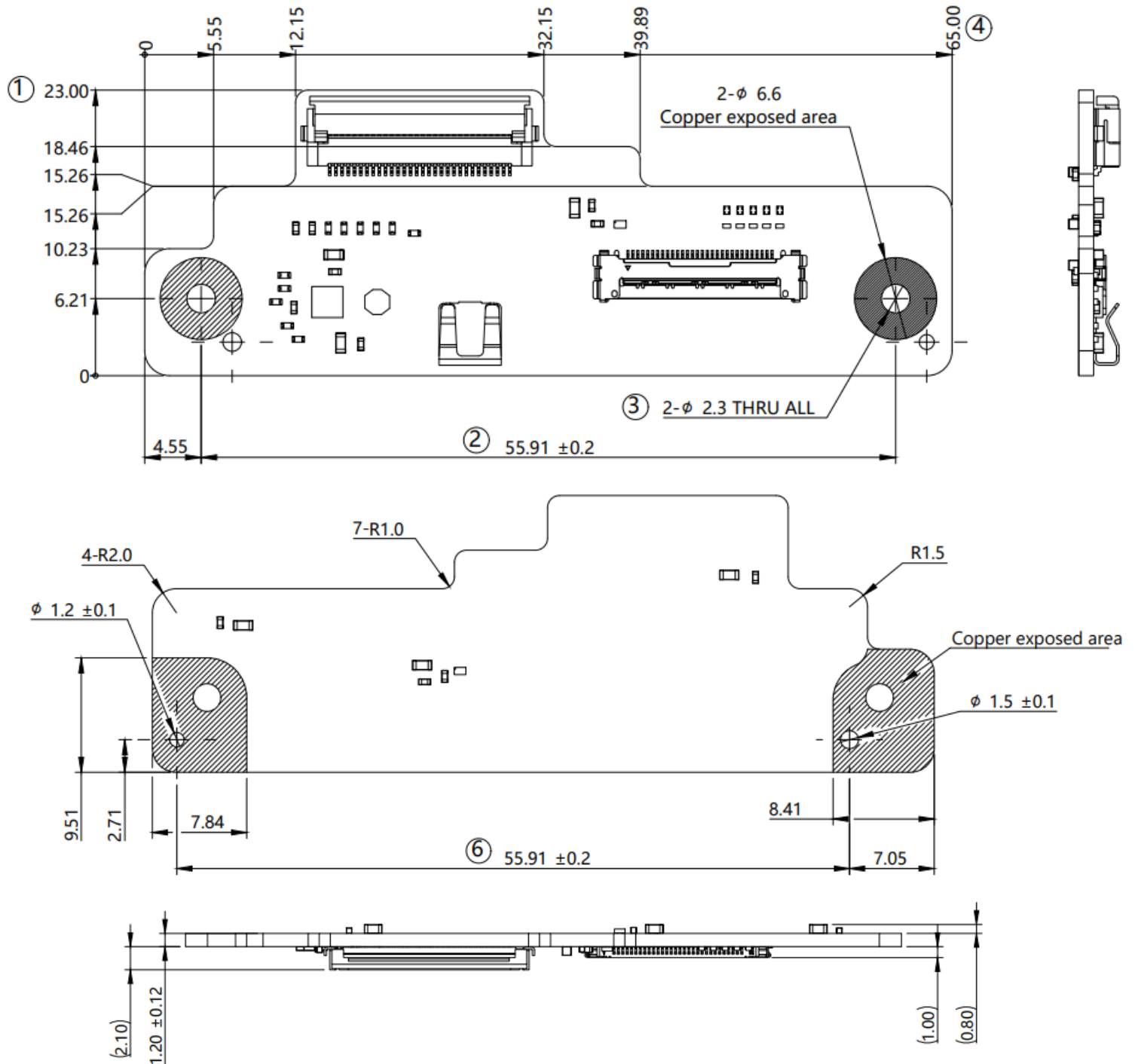
Interface J4 (To Intel® NUC System)

- Part#: FH12-30S-0.5SH (55)
- Number of Positions: 30
- Pitch: 0.5 mm
- Mating I-PEX Cable: FAW-1233-XX



LI-NUC-IPEX-ADP

DIMENSIONS



NOTE:

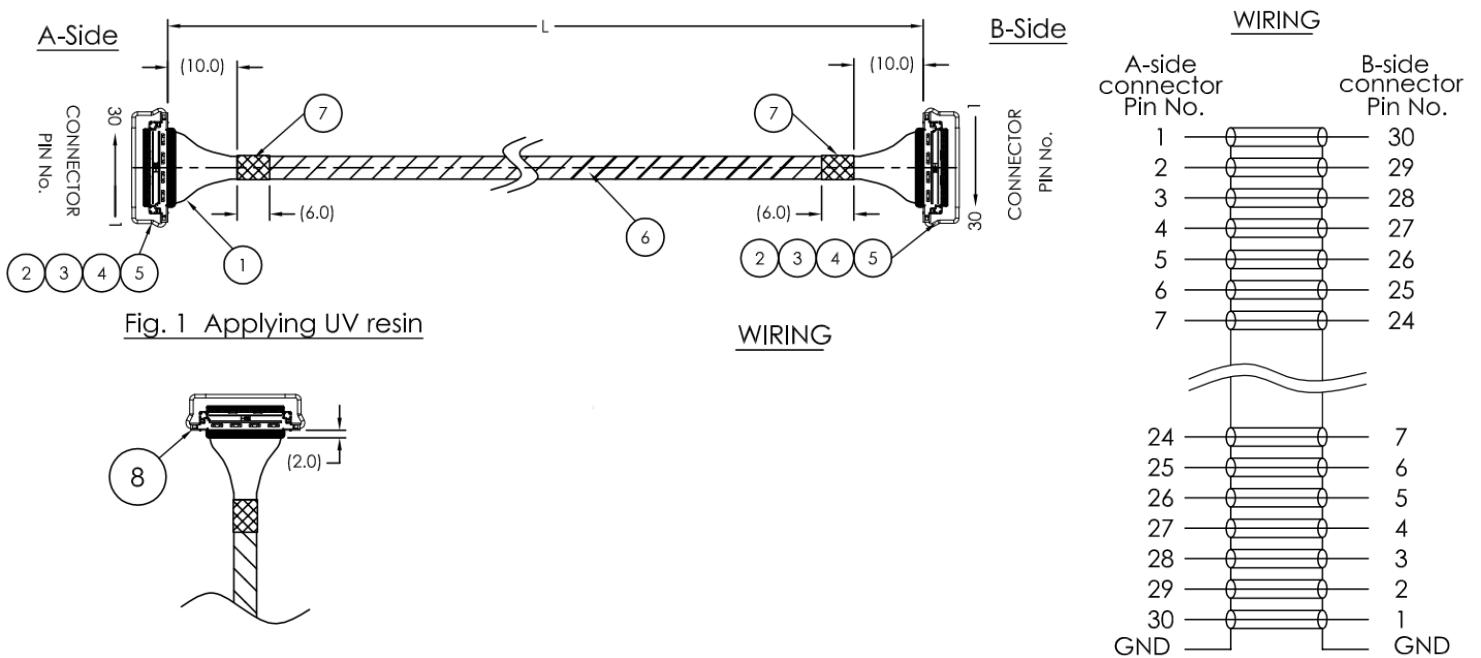
- ⊗ marked are important sizes.
- Tolerances for the unmarked are ± 0.15 mm.

Unit: mm

FAW-1233-03 Cable



MECHANICAL DIAGRAM

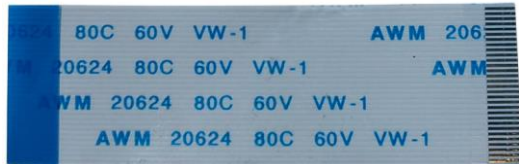


NOTE:

- Total length: 300.0 ± 10.0 .
- Apply UV resin at the end of connector to cover cables both sides of the cable assembly (Fig.1).

Unit: mm

LI-FPC-0.5MM-30P-70MM



FEATURES

- Pitch: 0.5 mm
- Number of pins: 30
- Width: 15 ± 1 mm
- Length: 70 mm
- Bifacial: contacts are on different side
- Either side of the FPC cable could be connected to the Intel® NUC system or the LI-NUC-IPEX-ADP

LI-IMX415-MIPI-081H



CAMERA SPECIFICATIONS

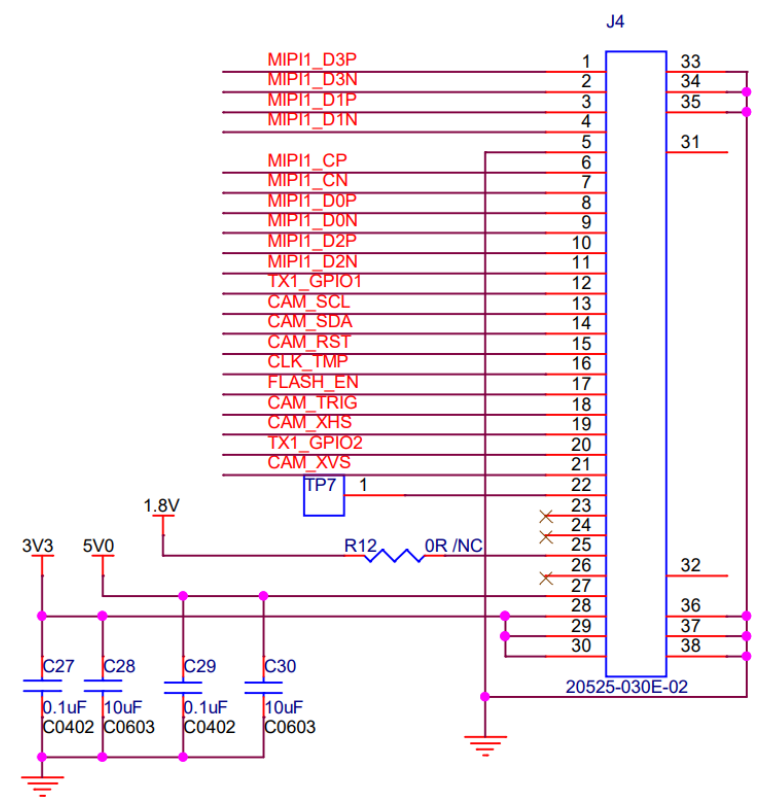
Sensor	Sony Diagonal 6.43 mm (Type 1/2.8) CMOS Image Sensor IMX415
Optical Format	1/2.8"
Resolution	3864 (H) x 2176 (V) (active pixels)
Pixel Size	1.45 x 1.45 μm
Output Format	10-bit / 12-bit RAW data
ISP	Not included
Color / Mono	Color sensor
Interface	4-lane MIPI CSI-2
Operating Temp	-20°C ~ +70°C
Storage Temp	-20°C ~ +70°C
Lens Mount	M12
Size	38 (L) x 38 (W) x 32.04 (D) mm
Weight	~ 17 g
Part#	LI-IMX415-MIPI-081H

LI-IMX415-MIPI-081H

INTERFACES

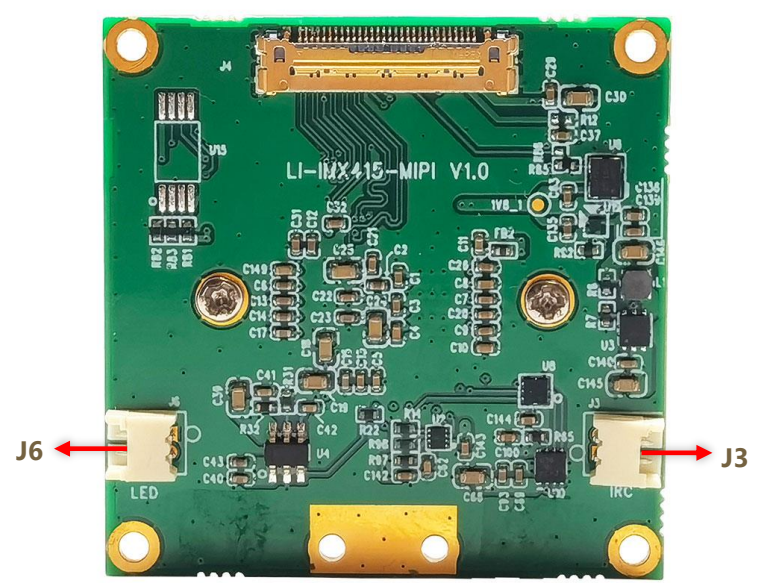
Interface J4

- Connector Part#: 20525-030E-02
- Number of Positions: 30
- Pitch: 0.4 mm
- Mating I-PEX cable: LI-FAW-1233
- Sensor I2C Address: 0x1A (7-bit)
- External Power Supply: 3.3V
- 2.9V (analog), 1.8V and 1.1V are generated from board



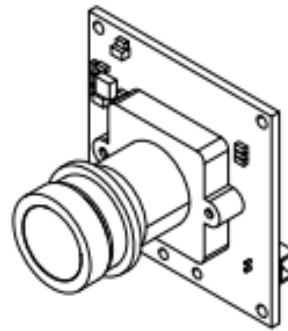
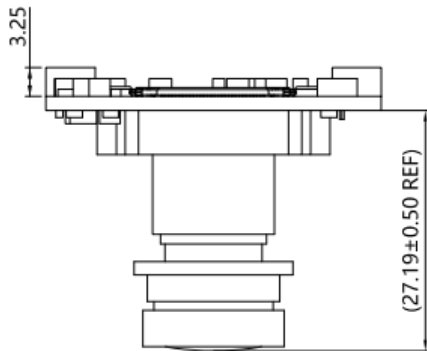
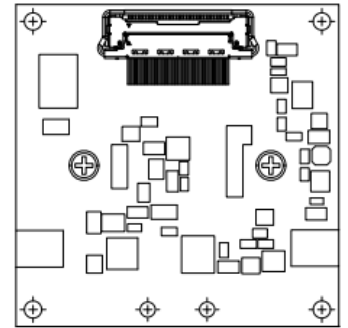
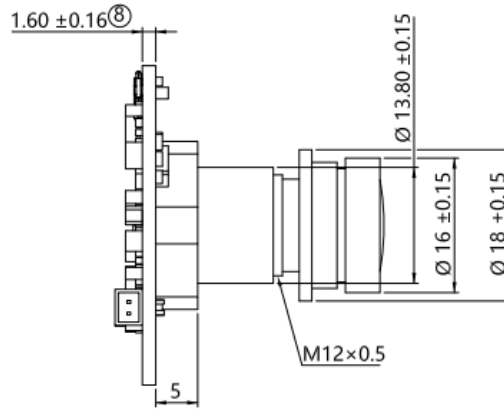
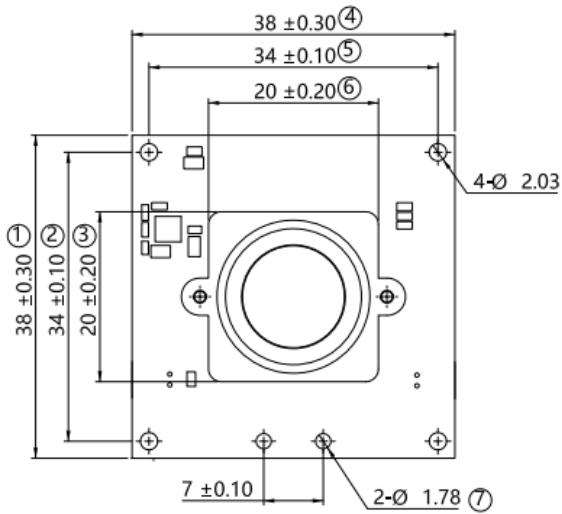
Interface J3 & J6

Interfaces	Description
J3 for IR-Cut switcher	<ul style="list-style-type: none"> ■ Part#: 1734829-2 ■ Number of Positions: 2 ■ Pitch: 1.25 mm
J6 for Flash_EN (Reserved IO)	<ul style="list-style-type: none"> ■ Part#: 1734829-2 ■ Number of Positions: 2 ■ Pitch: 1.25 mm



LI-IMX415-MIPI-081H

DIMENSIONS



NOTE:

- ⊗ marked are important sizes.
- Tolerances for the unmarked are ± 0.3 mm.

Unit: mm

● REVISION HISTORY

Revision	Description	Release Date
1.0	First release.	04 Jul 2023
1.1	Added power consumption in the "Key Features" part.	18 Jul 2023

910 Auburn Ct, Fremont, CA 94538, USA
Phone: +1-408-263-0988
Fax: +1-408-217-1960
Email: sales@leopardimaging.com
Website: www.leopardimaging.com

