

## DETAILS

Product Number	FCN15621_RONDA-W
Family	Ronda
Type	Assembly
Color	white
Diameter	69,9 mm
Height	19,8 mm
Style	round
Optic Material	
Holder Material	
Fastening	
Status	production ready
ROHS Compliant	Yes
Date Updated	19/01/2018



## OPTICAL PROPERTIES

LED	Viewing Angle	Light Beam	Efficiency	cd/lm	Connector
V10 Gen6	sim: 44	Wide	88 %	-	Bender Wirth: 455 Typ L1
VERO13	55 deg	Wide	90 %	0.950	-
CLU710/711	sim: 44	Wide	89 %	-	Bender Wirth: 470 Typ L1
CLL02x/CLU02x (LES10)	sim: 42	Wide	88 %	-	Bender Wirth: 434 Typ L1
CXA/B 15xx	sim: 42	Wide	88 %	-	Bender Wirth: 441 Typ L1
CXA/B 1816 & CXA/B 1820 & CXA 1850	sim: 48	Wide	88 %	-	Bender Wirth: 437 Typ L1
Mini Zenigata (GW6BM)	sim: 40	Wide	89 %	-	Bender Wirth: 452 Typ L1

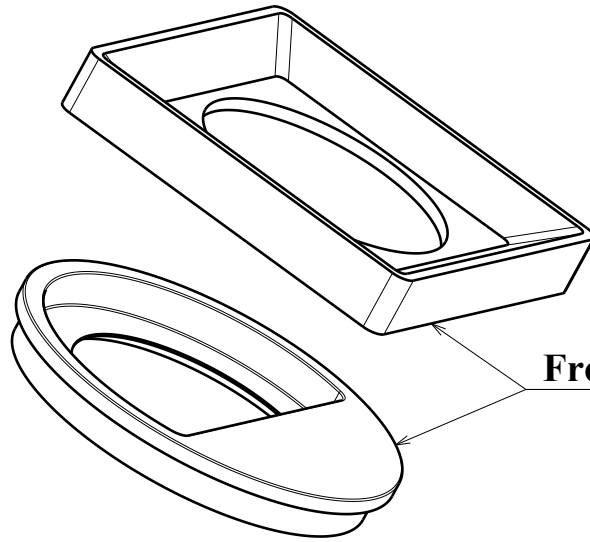
H

G

F

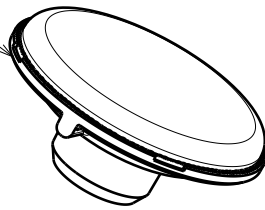
E

4



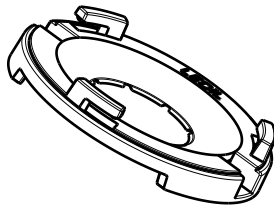
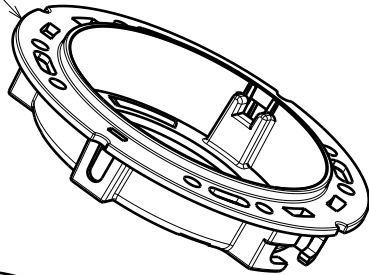
**Front plate examples**

**D=49.9**

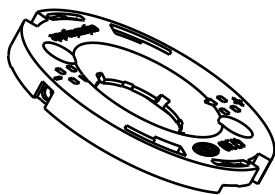


**Optic**

**D=69.9mm**



**Ledil-clamp / TE / Bender-wirth / other twist and lock socket types (holder A)**



**BJB and Stucchi 50mm (holder B)**



**LES size up to ~14mm, see compatibility [www.ledil.com](http://www.ledil.com)**

2

1

See more details on page 2 and 3

G

H

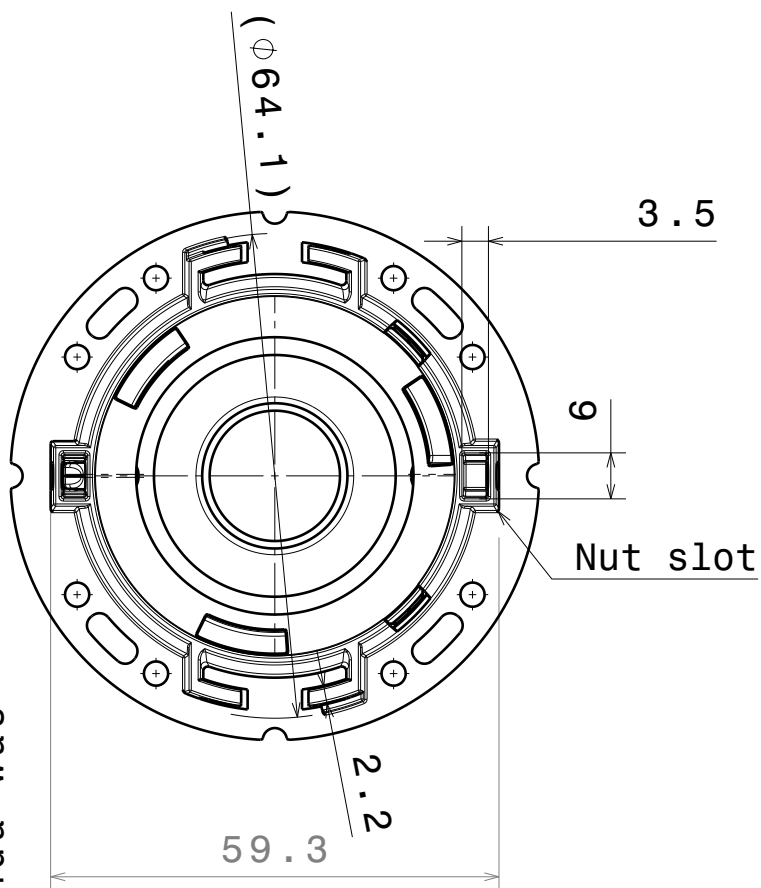
G

F

E

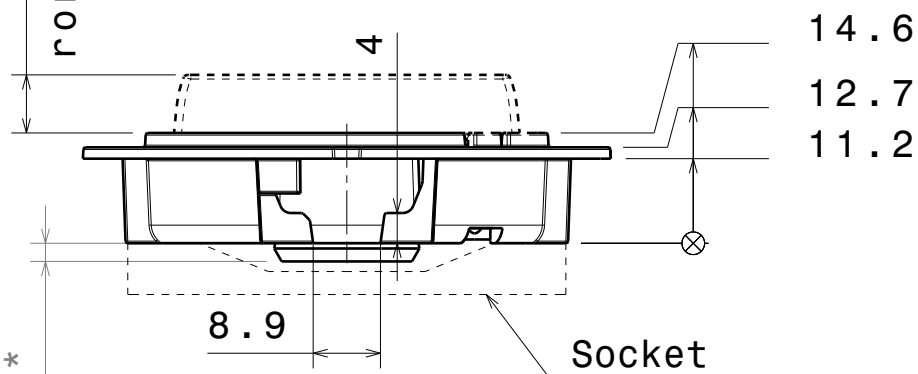
4

Bottom view



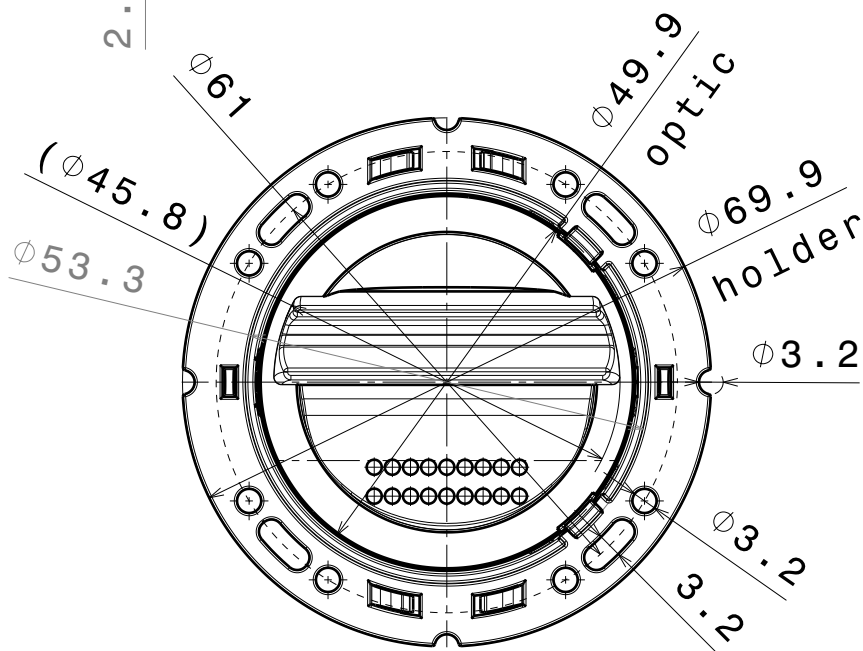
3

Front view



2

Top view

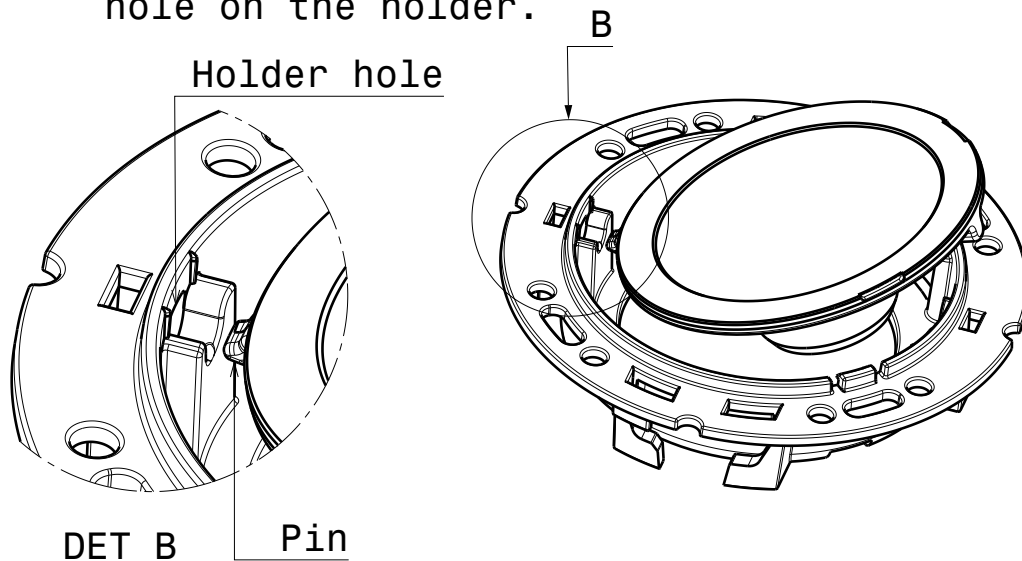


1

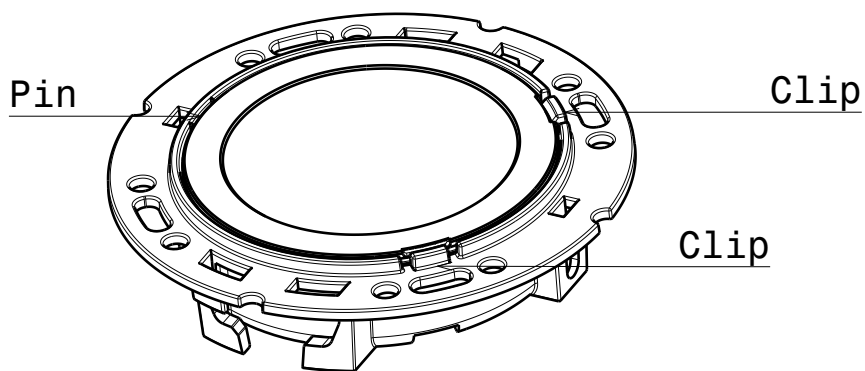
G

## OPTIC/HOLDER ASSEMBLY

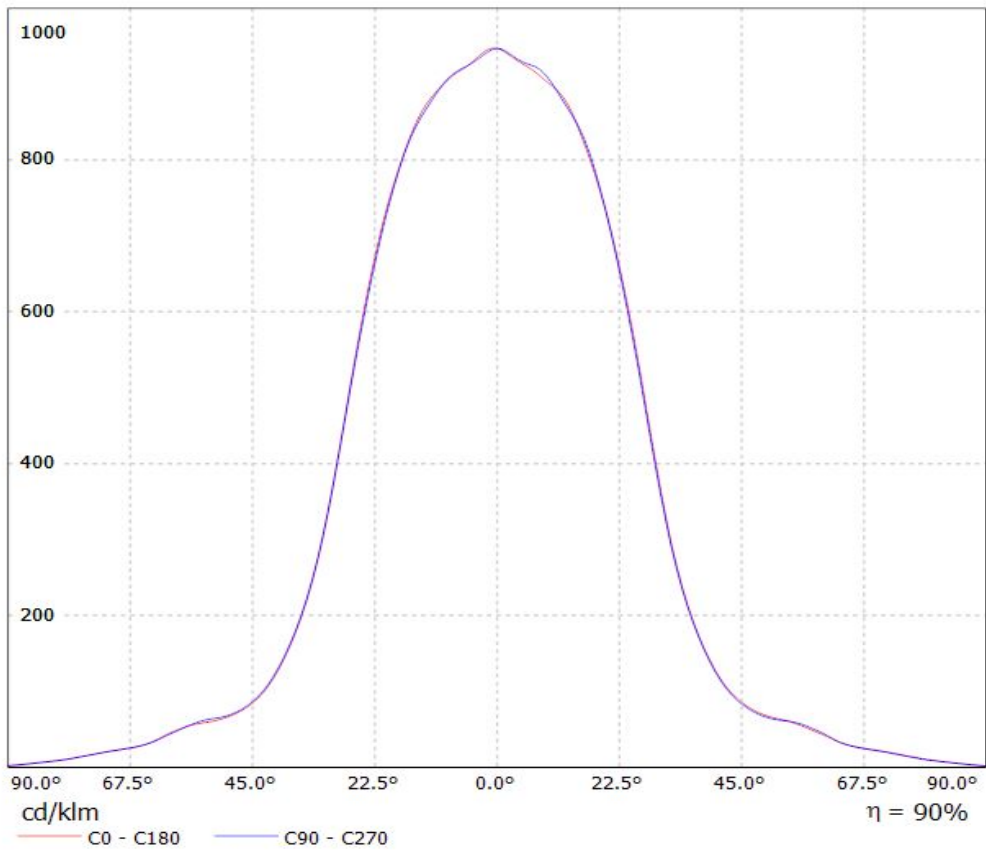
1. Place pin on the side of the lens into relative hole on the holder.



2. Press the lens under clips on the holder, ensuring both clips are fixed.

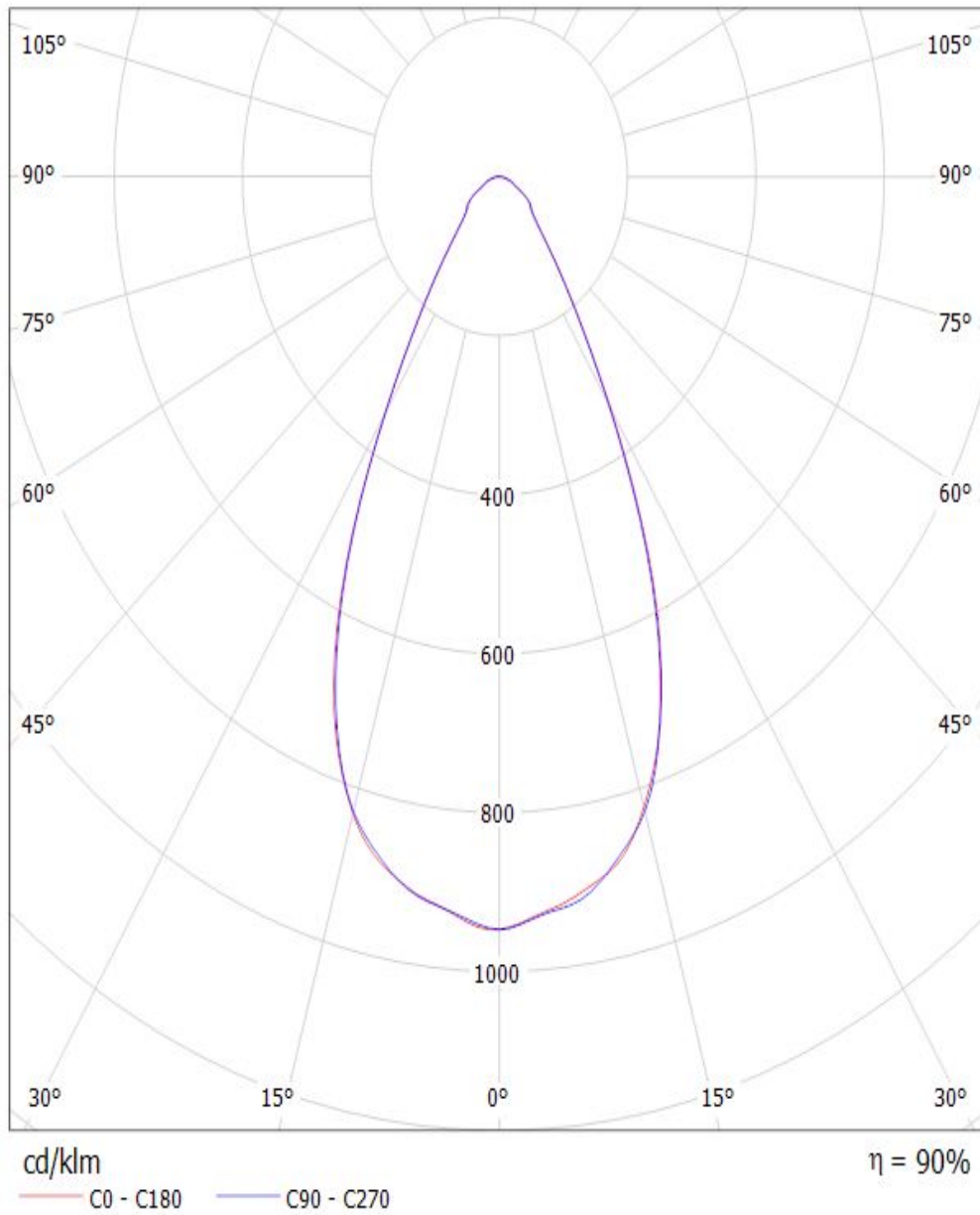


Luminaire: LEDiL Oy FCN15621\_RONDA-W\_(VERO13)  
Lamps: 1 x Bridgelux\_VERO13\_(BXRC-30E2000-C-Z3)\_+C13658\_CLAMP-VERO13-18\_956.274lm@250mA\_CCT=3000K\_P=7.59867W\_I=0.25A



Luminaire: LEDiL Oy FCN15621\_RONDA-W\_(VERO13)

Lamps: 1 x Bridgelux\_VERO13\_(BXRC-30E2000-C-Z3)\_+C13658\_CLAMP-VERO13-18\_956.274lm@250mA\_CCT=3000K\_P=7.59867W\_I=0.25A



**NOTE: The typical divergence will be changed by different color, chip size and chip position tolerance. The typical total divergence is the full angle measured where the luminous intensity is half of the peak value.**

#### **GENERAL INFORMATION**

- Product series especially designed & optimized for series of LEDs.
- Special care taken to make light distribution as uniform as possible.

Note! Due to use of high power COB's with this product, special attention to proper thermal design is highly recommended. LEDiL has no liability for direct, indirect or consecutive damages arising from the LEDiL products being used outside of the recommended temperature range.