

**PRODUCT DATASHEET**  
**Twiddle series**

last update 15/11/2013

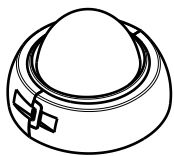
**Product number FA10734\_TWIDDLE-D**

|                 |                  |             |            |
|-----------------|------------------|-------------|------------|
| Family          | Twiddle          | FWHM        | 28 degrees |
| Type            | Assembly         | Efficiency  | -          |
| LED             | MX-6             | cd/Im       | -          |
| Color           | -                | Gerber File | Available  |
| Diameter        | 21.6 mm          |             |            |
| Height          | 14.3 mm          |             |            |
| Style           | Round            |             |            |
| Optic Material  | PMMA,PC          |             |            |
| Holder Material | -                |             |            |
| Fastening       | ["tape"]         |             |            |
| Status          | Production ready |             |            |

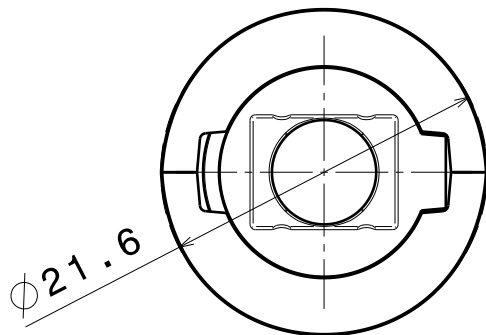
**Product number FA10736\_TWIDDLE-M**

|                 |                  |             |            |
|-----------------|------------------|-------------|------------|
| Family          | Twiddle          | FWHM        | 36 degrees |
| Type            | Assembly         | Efficiency  | -          |
| LED             | MX-6             | cd/Im       | -          |
| Color           | -                | Gerber File | Available  |
| Diameter        | 21.6 mm          |             |            |
| Height          | 13.15 mm         |             |            |
| Style           | Round            |             |            |
| Optic Material  | PC,PMMA          |             |            |
| Holder Material | -                |             |            |
| Fastening       | ["tape"]         |             |            |
| Status          | Production ready |             |            |

**NOTE: The typical divergence will be changed by different color, chip size and chip position tolerance. The typical total divergence is the full angle measured where the luminous intensity is half of the peak value.**



Isometric view  
Scale: 1:1



Bottom view

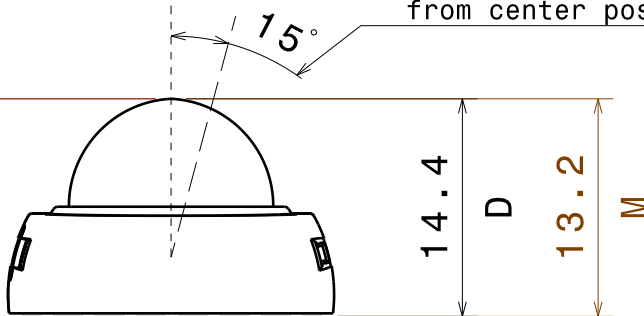
14.2 without Tape

D

13.0 without tape

M

Adjustable light beam  
to all directions, max.15deg  
from center position.



Front view

#### MATERIALS

Lens: PMMA

Holder: PC

#### Part no.s:

FA10737\_Twiddle-XR-D

FA10739\_Twiddle-XR-M

This drawing is our property.  
It can't be reproduced  
or communicated without  
our written agreement.



Ledil Oy  
Tehdaskatu 13  
FIN-24100 SALO  
Finland

#### DRAWING TITLE

Datasheet Twiddle-XR Series Assy

DRAWN BY

pV

DATE

27.11.2009

CHECKED BY

tk

DATE

26.11.2008

DESIGNED BY

HH

DATE

14.10.2008

SIZE

A4

DRAWING NUMBER

REV

1

SCALE

2:1

WEIGHT (g)

-

SHEET

1/1