

CMC LENSES FOR CREE MC-E LEDs



- Specially designed for Cree MC-E series of LEDs.
- Special care taken to make a uniform white or warm white illumination. Lenses work well with other colors, too.
- Lens material optical grade PMMA. Allows use of high current and temperature conditions
- Best available optical efficiency, up to >90%, with an extremely good cutoff of light
- Integrated holder, holder material PC. Fastening to heat sink with a PU foam adhesive tape of automotive grade
- Compact dimensions 21.6 x 21.6 mm. Square form enables easy build of matrix without any gaps between lenses.

LENS TYPES

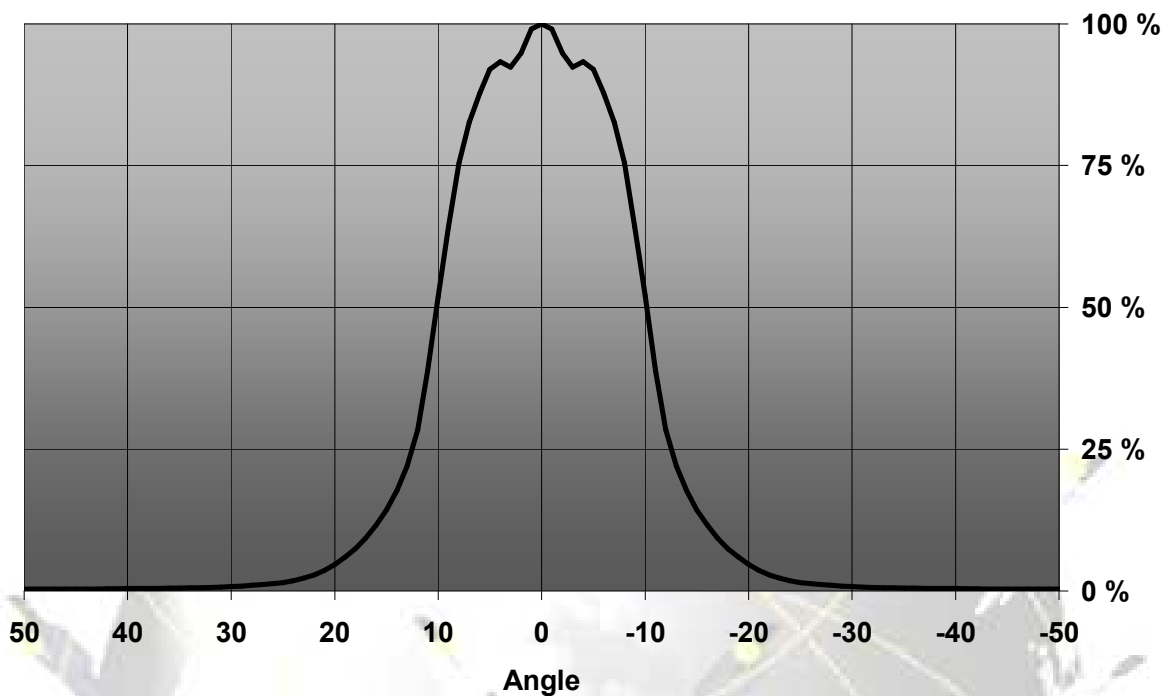
NAME	ORDERING CODE	FWHM Angle
CMC REAL SPOT	F10674_CMC-RS	$\pm 10^\circ$
CMC SMOOTH SPOT	F10673_CMC-SS	N/A
CMC DIFFUSER	F10672_CMC-D	$\pm 10^\circ$
CMC MEDIUM	F10671_CMC-M	N/A
CMC MEDIUM	F10680_CMC-O	$\pm 21^\circ \times \pm 10^\circ$
CMC WIDE	F10713_CMC-W	N/A

*) IMPORTANT NOTICE:

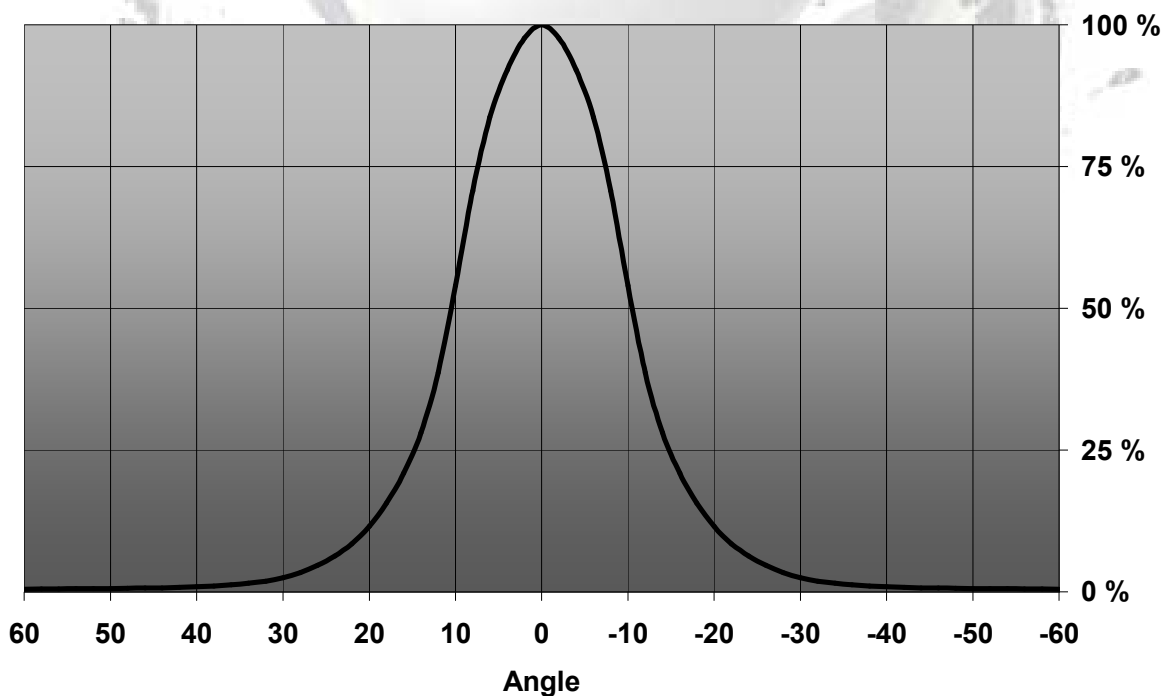
REAL SPOT lens is a highly efficient pure collimator lens, which optically functions in an excellent way, giving a high intensity. REAL SPOT lens also reveals the chip level optical structure of the LED. We recommend REAL SPOT lens ONLY for applications, where light intensity is of highest priority, while we do not recommend it for applications, where color uniformity and aesthetics are of high importance.

SMOOTH SPOT lens is a pure collimator lens with light mixing properties. It smoothens the beam pattern and makes a uniform color distribution over the whole beam angle. Light intensity is lower than for the REAL SPOT lens. SMOOTH SPOT lens is recommended for white light applications, where pleasant, high-quality illumination is wished.

Relative Intensity of CMC-RS

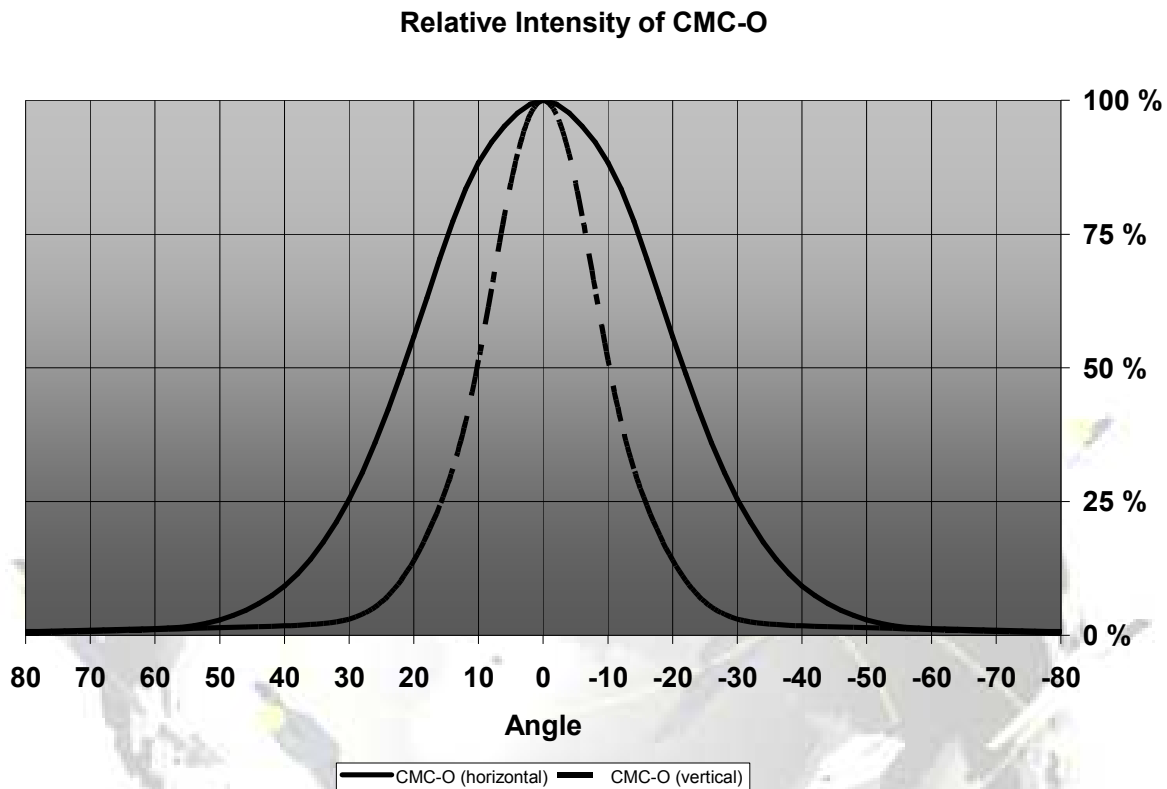


Relative Intensity of CMC-D



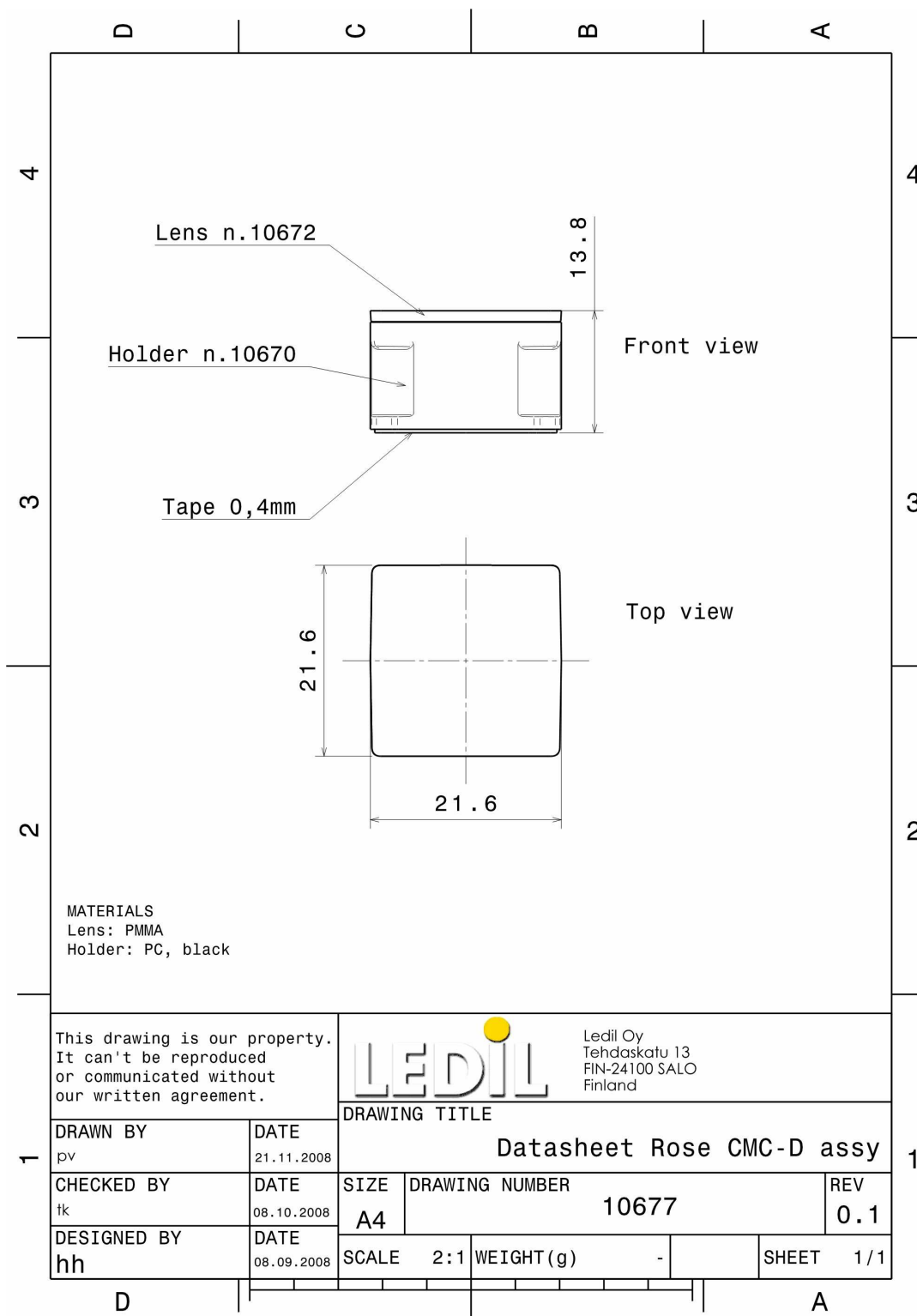
© Ledil Oy – PRELIMINARY - Subject to change without prior notice

MEASUREMENT DATA



EULUMDAT & IES FILES AVAILABLE BY REQUEST

DRAWINGS



© Ledil Oy – PRELIMINARY - Subject to change without prior notice