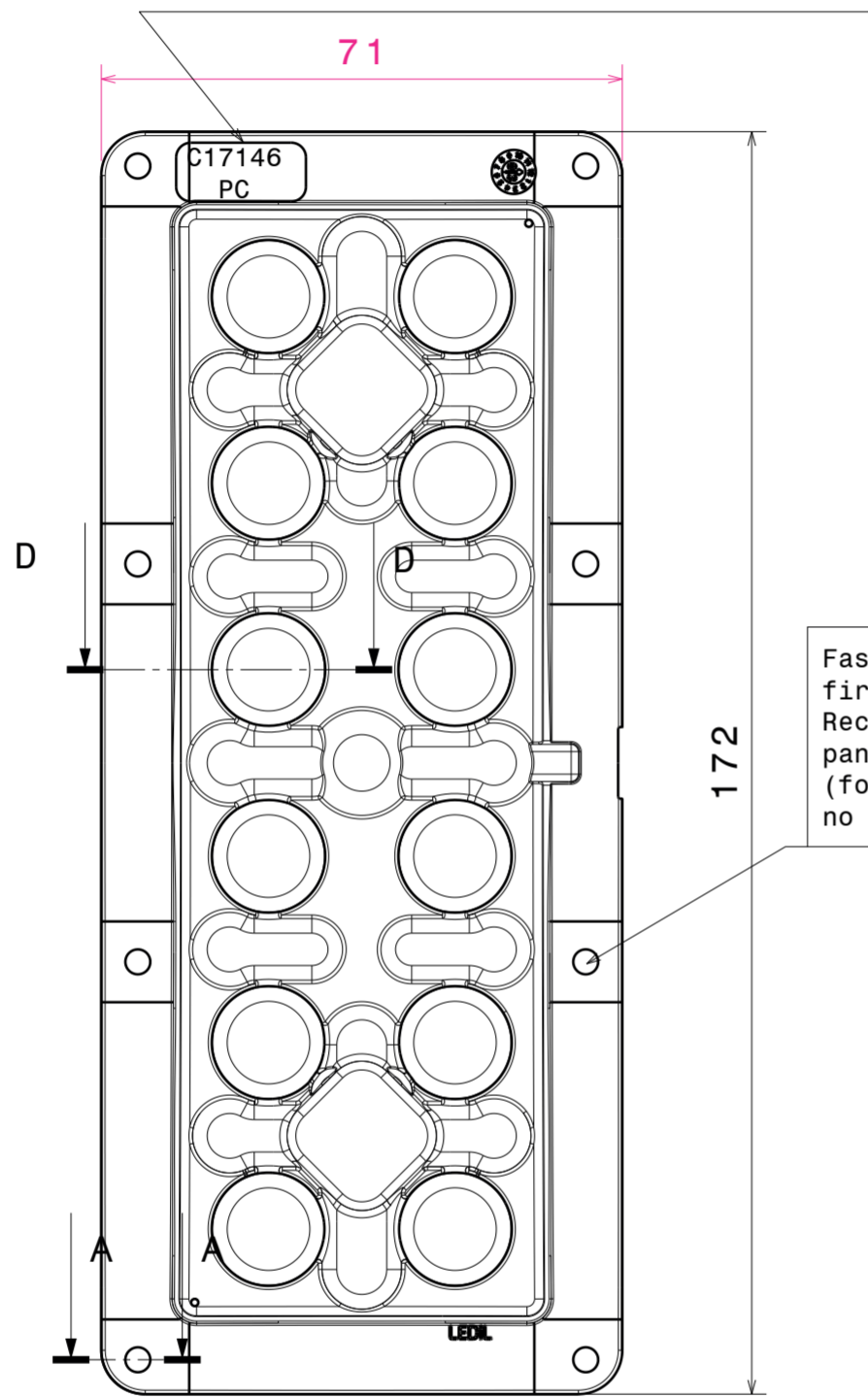
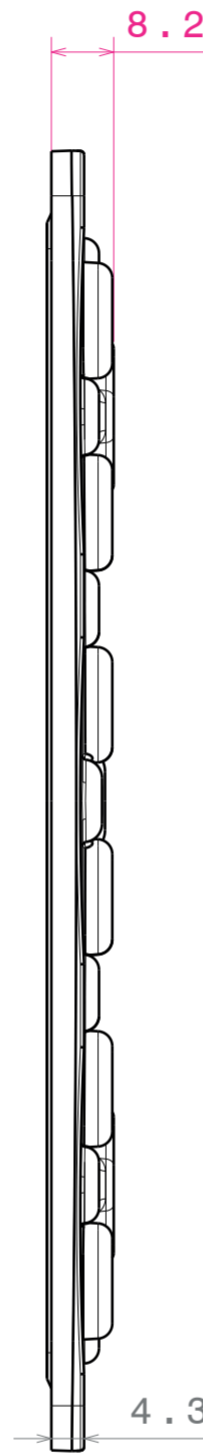


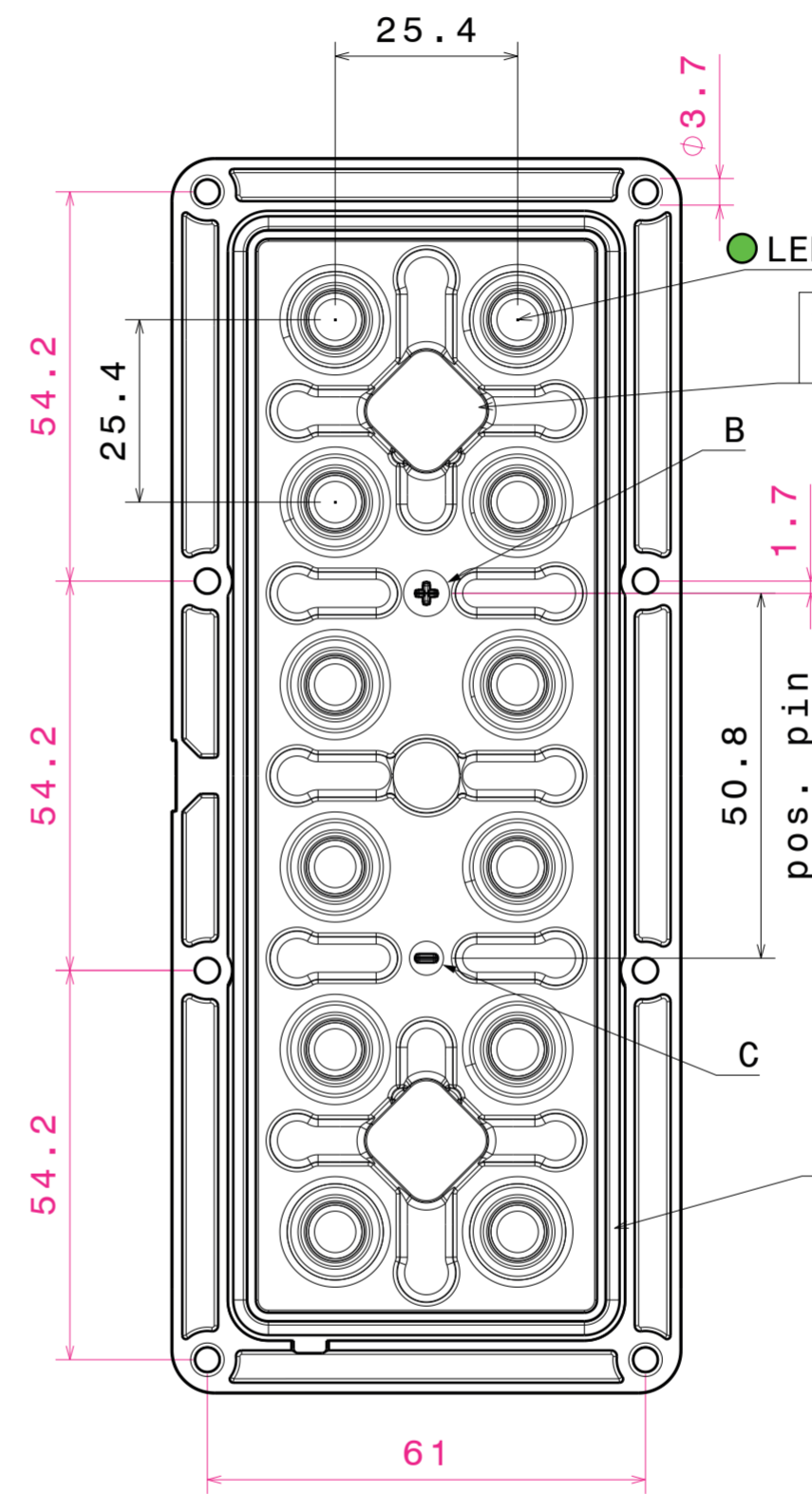
Right view
Scale: 1:1



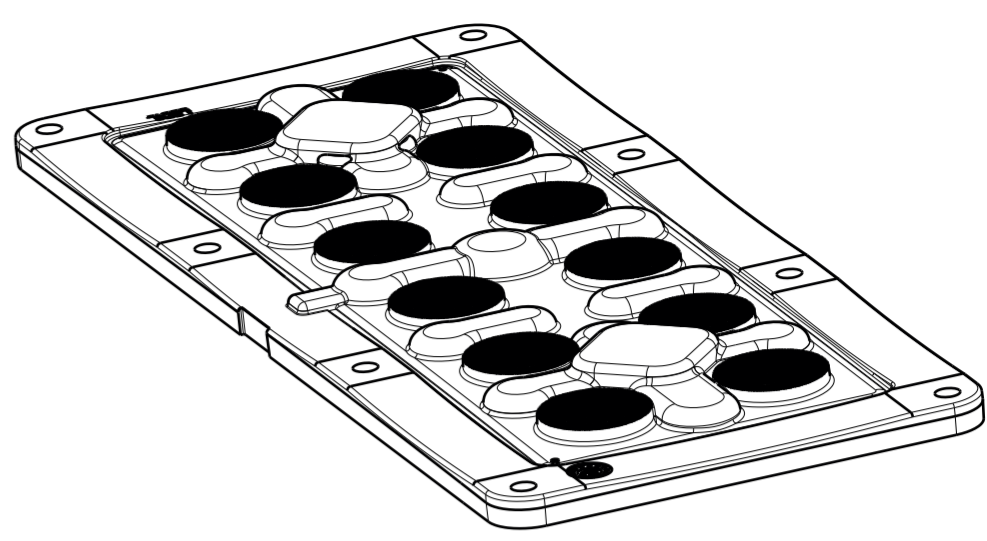
Front view
Scale: 1:1



Left view
Scale: 1:1



Rear view
Scale: 1:1

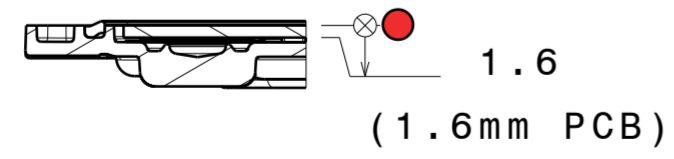


Isometric view
Scale: 1:1

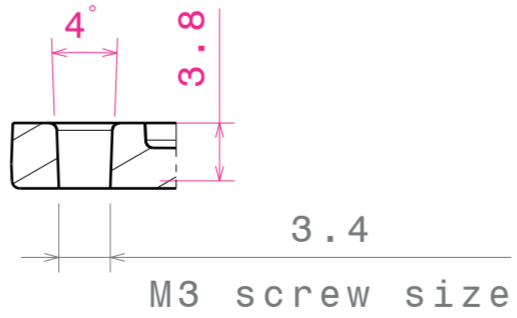
Wire terminal location:
Pocket size 13.5x13.5x5.1mm.

Wiring:
PCB is fully sealed between
the lens with silicone seal
and the heatsink. Wiring
needs to be done through the
PCB and heat sink to
maintain high IP rating.

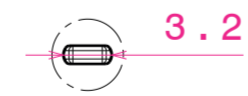
Silicone seal is tested to work in
LEDiL test assemblies. Customer is
recommended to test the sealing in
the end product due many variables,
such as heat sink surface and
possible chemical traces



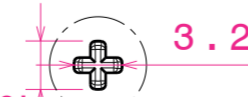
Section view D-D
Scale: 1:1



Section view A-A
Scale: 2:1

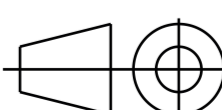


Detail C
Scale: 2:1



Detail B
Scale: 2:1

PART	TYPE	MATERIAL	COLOR / COATING
C17146_HB-IP-2X6-G2-WWW-PC		PC	clear
C17066_SEAL-IP-2X6-G2		Silicone	white

MECHANICAL DRAWING		LEDiL®
PRODUCT		
CS17147_HB-IP-2X6-G2-WWW-PC		
Plastic moulding general tolerances according to DIN 16901-130 and applies if not otherwise shown in the drawing. Silicone moulding general tolerances according to ISO 3302-1 Class M3 and applies if not otherwise shown in the drawing.	FIRST ANGLE PROJECTION: 	This drawing is the property of LEDiL Oy. It may not be reproduced, copied or communicated without a written agreement with LEDiL Oy.
SCALE 1:1	WEIGHT 40 g	A2 SHEET 1/1

Notes	
1	PCB or heatsink level.
2	LED location.
3	Ensure LED fitting from a product specific 3D model available from www.ledil.com.
4	See installation details in page 2.