



Representative photograph, actual product appearance may vary.

Due to regional agency approval requirements, some products may not be available in your area. Please contact your regional Honeywell office regarding your product of choice.

# 4AV15F

4AV Series Hall-Effect Vane with 24 AWG XLPE 139,7 mm [5.5 in] lead wires

## Features

- Current sinking output
- Smaller size than 2AV
- Closely controlled differential to predict pulse width
- Operation by a low cost, easy to fabricate ferrous vane
- Magnet and sensor incorporated in same rugged package
- Sealed construction ... unaffected by dust or dirt
- 0 kHz to 100 kHz operating speed ... no minimum speed of operation
- On and Off times programmable by vane dimensioning
- Precision mechanical operating characteristics

## Description

AV vane operated integral magnet position sensors are operated by passing a ferrous vane through the gap between the Hall sensor and the magnet, shunting the magnetic flux away from the sensor. AVs can be used as limit switches by operating with a single large vane; as tachometer sensors by using toothed wheels; or as synchronizing elements by using cams or sectors.



# 4AV15F

4AV Series Hall-Effect Vane with 24 AWG XLPE 139,7 mm [5.5 in] lead wires

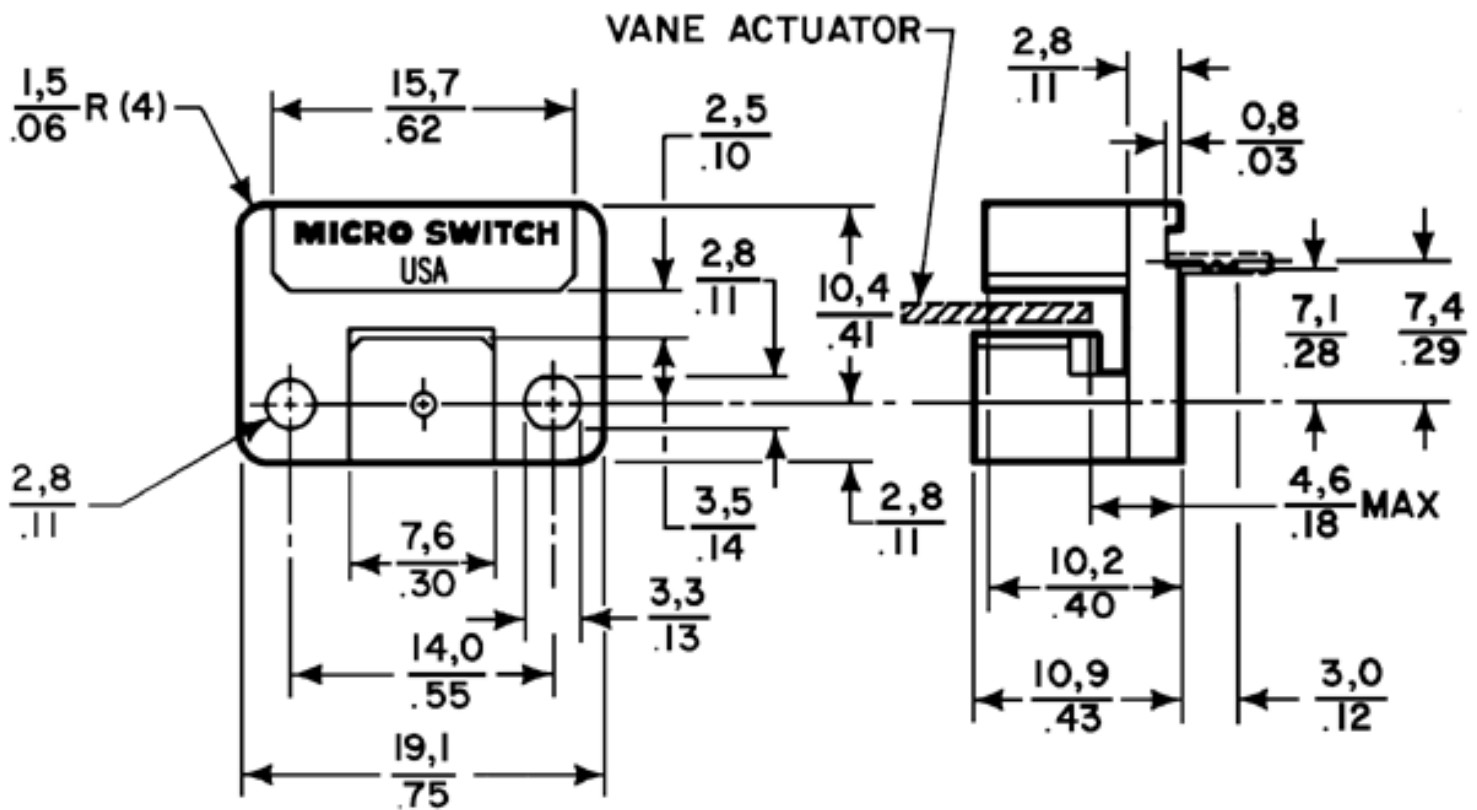
Product Specifications	
Product Type	Hall-Effect Vane Position Sensor
Package Style	Mounting Holes
Supply Voltage	4.5 Vdc to 24.0 Vdc
Output Type	Sink
Termination Type	139,7 mm [5.5 in] lead wires
Operating Temperature Range	-40 °C to 125 °C [-40 °F to 257 °F]
Output Voltage	0.4 Vdc max.
Vibration	10 g/55 Hz to 2 kHz

<b>Humidity</b>	85 %RH/80 °C, 250 h
<b>Salt Spray</b>	5 %/48 h/35 °C
<b>Temperature Shock</b>	-40 °C to 125 °C [-40 °F to 257 °F]/30 min ea.
<b>Vane and Geartooth Target Material</b>	Cold Rolled Steel, 1018 or Low in Carbon (Annealed)
<b>Availability</b>	Global
<b>Supply Current (max. @ 25 °C)</b>	18.5 mA
<b>Output Current (max.)</b>	40 mA
<b>Left Operate</b>	5,4 mm [0.213 in]
<b>Right Operate</b>	8,6 mm [0.337 in]
<b>Left Release</b>	6.02 mm [0.237 in]
<b>Right Release</b>	7,9 mm [0.313 in]
<b>Left to Right Differential</b>	2,5 mm [0.100 in]
<b>Right to Left Differential</b>	2,5 mm [0.100 in]
<b>Vane Thickness</b>	1,02 mm [0.04 in]
<b>Minimum Window</b>	10,2 mm [0.40 in]
<b>Minimum Tooth</b>	6,3 mm [0.25 in]
<b>Minimum Tooth Depth</b>	9,3 mm [0.37 in]
<b>Series Name</b>	4AV Series



# 4AV15F

4AV Series Hall-Effect Vane with 24 AWG XLPE 139,7 mm [5.5 in] lead wires



**Honeywell**

## 4AV15F

4AV Series Hall-Effect Vane with 24 AWG XLPE 139,7 mm [5.5 in] lead wires

### **WARNING**

#### **PERSONAL INJURY**

DO NOT USE these products as safety or emergency stop devices, or in any other application where failure of the product could result in personal injury.

**Failure to comply with these instructions could result in death or serious injury.**

## **WARNING**

### **MISUSE OF DOCUMENTATION**

- The information presented in this product sheet (or catalog) is for reference only. DO NOT USE this document as product installation information.
- Complete installation, operation and maintenance information is provided in the instructions supplied with each product.

**Failure to comply with these instructions could result in death or serious injury.**

© Copyright Honeywell Inc.1998-2004 All rights reserved.