

# HPS5

## Power Supply/Battery Charger

### Description

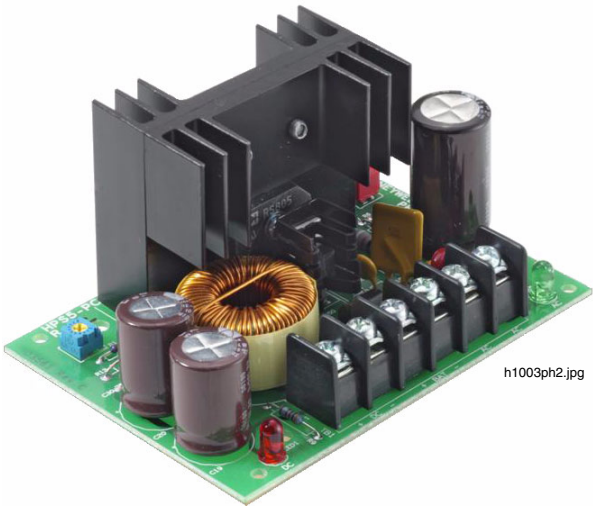
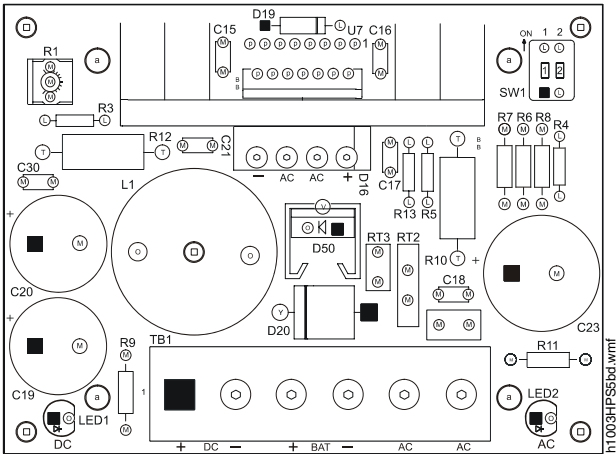
The HPS5 power supply/battery charger converts a low voltage AC input into an output of 6, 12, or 24 VDC at 4.0 A of continuous supply current. This general-purpose switching power supply can provide additional power for a variety of applications such as access control, intrusion security, and video system accessories.

### Benefits

- Appropriate transformer options enable easy voltage configuration and simple operation.
- Voltage choice is selectable by a switch on the board.
- Instantaneous switchover to standby battery (if equipped) when AC fails, maintaining power to all attached devices without intervention.
- Power supply and charger board easily mounts using foam tape (included) or with optional **HST34** snap track.
- LED lights for quick diagnosis, troubleshooting, and status indication.

### LED Diagnostics

Red LED DC	Green LED AC	Status
ON	ON	Normal operation.
ON	OFF	Loss of AC. Operating on standby battery
OFF	ON	No DC output. Short-circuit or thermal overload present
OFF	OFF	No DC output. Loss of AC. Battery discharged or not present.



### Specifications

- DIP switch selectable for 6, 12, or 24 VDC.
- 4.0 A of continuous supply current at 6 or 12 VDC.
- Filtered and electronically regulated output.
- Built-in charger for sealed lead-acid or gel-type batteries.
- Maximum charge current of 400 mA.
- Automatic switchover to standby battery.
- Thermal and short circuit protection with auto reset.
- AC input and DC output LED diagnostic indicators.
- Compact design.
- Battery leads and foam mounting tape included.
- Board dimensions: 2.75 H x 3.5" W x 1.75" D (cm: 6.985 H x 8.890 W x 4.445 D).

### Voltage Output Selection

Output Voltage/ Current	SW1	SW2	Transformer Requirements
6 VDC	ON	OFF	24 VAC/50 VA (model HTP2450)
12 VDC	OFF	OFF	28 VAC/100 VA (model 28100)
24 VDC	OFF	ON	28 VAC/175 VA (model HT28175)

---

This document is not intended to be used for installation purposes. We try to keep our product information up-to-date and accurate. We cannot cover all specific applications or anticipate all requirements. All specifications are subject to change without notice.  
©2010 by Honeywell International Inc. All rights reserved. Unauthorized use of this document is strictly prohibited.

## **Automation and Control Solutions**

Honeywell

12 Clintonville Road

Northford, CT 06472-1610

[www.honeywellpower.com](http://www.honeywellpower.com)

1(877) HPP-POWR

[hpp\\_techserv@honeywell.com](mailto:hpp_techserv@honeywell.com)

DH-1003:A  
May 2010  
Made in the U.S.A.  
© U.S. Registered Trademark  
© 2010 Honeywell International Inc.  
Page 2 of 2



# **Honeywell**