

GlobTek, Inc. www.globtek.com 186 Veterans Drive, Northvale, NJ 07647 Tel. (201) 784-1000 Fax (201) 784-0111	Drawing Title: GT-21088-0805-W2, ICT/ITE Power Supply, Efficiency Level: N/A, Case Color/Style: GlobTek Black, Wall Plug-in, Regulated Switchmode AC-DC Power Supply AC Adaptor, Input Rating: 100-240V~, 50-60 Hz, N. America NEMA 1-15 Fixed, , Output Rating: 7.50W, 5.0V@1.5A, Pin Out: Pin 1: +V (White), Pin 2: COM (Shield), Output Configuration: 1830 mm, 20/1C + Shield Cond, UL 1185, 2 PINS CONNECTOR CONXALL MICRO-CON-X TYPE, P/N: 16282-2SG-311, Ferrite: None, GlobTek Black, GT Cord # C51838, Blades/Input Cord: Fixed Blades North American 1-15P, Approvals: Model No. GT-21088-0805-W2 Part No./Ordering No. WR9HA1500CXL-Y(R)
	Rev E

In Addition to GlobTek Inc.'s renewed ISO9001:2015 - Quality Management System Certification, GlobTek Inc. is now certified to:

ISO13485:2016 - Medical Devices Quality Management System Certification

ISO14001:2015 - Environmental Management System Certification

ISO Certificates are available online at <https://www.globtek.com/iso-certificates/>

The acceptance of this specification and use of the product described in this document indicates the acceptance and binding of the customer to Globtek TERMS AND CONDITIONS (attached to the end of this document), which supersede all other agreements, terms, and conditions (<https://www.globtek.com/terms-and-conditions/>).

The purchaser of this product (Customer) agrees that it is their sole responsibility to determine suitability/fitness of the product described in this specification for their application and to take precautions for protection against any hazards attendant to the handling and use of the product.

Footnote:

GlobTek Inc. will not be liable for the safety and performance of these power supplies/battery packs if unauthorized access and repair occurs. End user should consult applicable UL, CSA or EN standards for proper installation instruction.

Limitation of Use:

GlobTek products are intended for use with commercial, medical, and/or industrial equipment only. GlobTek product are not authorized for use as mission critical components in life support hazardous environment, nuclear or aircraft applications without prior written approval from the CEO of GlobTek Inc.

Contents of this document are subject to change without prior notice.

Customer Approval of Specification:

Please approve, sign and send back to GlobTek so we can complete order processing.
A delay in receipt of this form will delay delivery schedule.

Company Name:	Customer P/N:
Quote Number:	Date:
Authorized Representative Name:	Authorized Representative Signature:

GlobTek, Inc. www.globtek.com 186 Veterans Drive, Northvale, NJ 07647 Tel. (201) 784-1000 Fax (201) 784-0111	Drawing Title: GT-21088-0805-W2, ICT/ITE Power Supply, Efficiency Level: N/A, Case Color/Style: GlobTek Black, Wall Plug-in, Regulated Switchmode AC-DC Power Supply AC Adaptor, Input Rating: 100-240V~, 50-60 Hz, N. America NEMA 1-15 Fixed, , Output Rating: 7.50W, 5.0V@1.5A, Pin Out: Pin 1: +V (White), Pin 2: COM (Shield), Output Configuration: 1830 mm, 20/1C + Shield Cond, UL 1185, 2 PINS CONNECTOR CONXALL MICRO-CON-X TYPE, P/N: 16282-2SG-311, Ferrite: None, GlobTek Black, GT Cord # C51838, Blades/Input Cord: Fixed Blades North American 1-15P, Approvals:		
	Model No. GT-21088-0805-W2		
	Part No./Ordering No. WR9HA1500CXL-Y(R)		Rev E

REVISION HISTORY

REV	DESCRIPTION	SUB	DATE	APPROVED
E	Update to SF format	QA	05/28/2020	QA

POWER SUPPLY INFORMATION

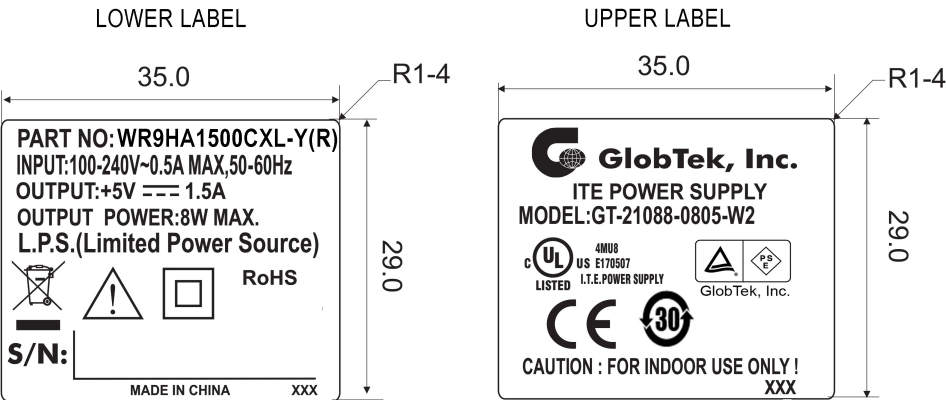
TYPE	Wall Plug-in
TECHNOLOGY	Regulated Switchmode AC-DC Power Supply AC Adaptor
CASE COLOR	GlobTek Black
NAMEPLATE RATED INPUT	100-240V~, 50-60 Hz, 0.5A
INPUT CONFIG	N. America NEMA 1-15 Fixed
WATTS	7.50
VOLTS OUT	5.0
CURRENT OUT (Amps)	1.5
BLADE/CORD INCLUDED	FBNA2 Fixed Blades North American 1-15P
BLADE/CORD INSTALLED	FBNA2 Fixed Blades North American 1-15P
INGRESS PROTECTION	
GROUNDING CONFIGURATION	(F1) Floating output, Class II / double insulated
EFFICIENCY LEVEL	N/A
OUTPUT CONFIGURATION	1830 mm, 20/1C + Shield Cond, UL 1185, 2 PINS CONNECTOR CONXALL MICRO-CON-X TYPE, P/N: 16282-2SG-311, Ferrite: None, GlobTek Black, GT Cord # C51838
OVERMOLDED	Yes
OUTPUT CONNECTOR GENDER	Female
CONNECTOR PIN OUT	Pin 1: +V (White), Pin 2: COM (Shield)
LABEL SPECS	Standard GT - See Deviations,L-1604
SPECIAL BARCODE LABEL MATERIAL	No
PACK SPEC	Standard GT-21088-W2, Individually Box, GT User Manual
USER MANUAL	809-DESKTOPUSERMANUAL on A4 paper

GlobTek, Inc. www.globtek.com 186 Veterans Drive, Northvale, NJ 07647 Tel. (201) 784-1000 Fax (201) 784-0111	Drawing Title: GT-21088-0805-W2, ICT/ITE Power Supply, Efficiency Level: N/A, Case Color/Style: GlobTek Black, Wall Plug-in, Regulated Switchmode AC-DC Power Supply AC Adaptor, Input Rating: 100-240V~, 50-60 Hz, N. America NEMA 1-15 Fixed, , Output Rating: 7.50W, 5.0V@1.5A, Pin Out: Pin 1: +V (White), Pin 2: COM (Shield), Output Configuration: 1830 mm, 20/1C + Shield Cond, UL 1185, 2 PINS CONNECTOR CONXALL MICRO-CON-X TYPE, P/N: 16282-2SG-311, Ferrite: None, GlobTek Black, GT Cord # C51838, Blades/Input Cord: Fixed Blades North American 1-15P, Approvals:	
	Model No. GT-21088-0805-W2	
	Part No./Ordering No. WR9HA1500CXL-Y(R)	Rev E

Notes/Modifications/Customizations (notes in this section supersede the values shown in the standard spec)

DIMENSIONS ARE IN MM UNLESS SPECIFIED OTHERWISE

Labels on the unit:



GlobTek, Inc. www.globtek.com 186 Veterans Drive, Northvale, NJ 07647 Tel. (201) 784-1000 Fax (201) 784-0111	Drawing Title: GT-21088-0805-W2, ICT/ITE Power Supply, Efficiency Level: N/A, Case Color/Style: GlobTek Black, Wall Plug-in, Regulated Switchmode AC-DC Power Supply AC Adaptor, Input Rating: 100-240V~, 50-60 Hz, N. America NEMA 1-15 Fixed, , Output Rating: 7.50W, 5.0V@1.5A, Pin Out: Pin 1: +V (White), Pin 2: COM (Shield), Output Configuration: 1830 mm, 20/1C + Shield Cond, UL 1185, 2 PINS CONNECTOR CONXALL MICRO-CON-X TYPE, P/N: 16282-2SG-311, Ferrite: None, GlobTek Black, GT Cord # C51838, Blades/Input Cord: Fixed Blades North American 1-15P, Approvals:	
	Model No. GT-21088-0805-W2	
	Part No./Ordering No. WR9HA1500CXL-Y(R)	Rev E

ELECTRICAL SPECIFICATIONS

A) ELECTRICAL SPECIFICATIONS:

1. Input Voltage: Specified 90-264 Vac, Nameplate rated: 100-240Vac
2. Input Frequency: Specified 47-63 Hz, Nameplate rated 50-60Hz
3. Output Regulation: +/- 5% measured at the output connector
4. Line Voltage Regulation: +/- 2% typical measures at full load
5. Output Ripple (Vp-p): 100 mV measured at 20 MHz bandwidth with 0.1 uf ceramic capacitor in parallel with 10 uf electrolytic capacitor connected at the end of output connector at nominal line
6. Turn-On/Turn-Off Overshoot: 5% maximum, 1mS typical recovery time for 25% step load
7. Turn-On Delay: <2 second typical
8. Hold-Up Time: 5mS typical @ nominal input voltage & full load
9. Inrush Current: 30A typical @ 115Vac input ; 60A typical @ 230Vac input
10. Switching Frequency: 65 KHz typical

B) PROTECTION

1. Over-Voltage: Electronically Protected, unit will recover upon removal of fault
2. Short Circuit: Electronically Protected, unit will recover upon removal of fault
3. Input Protection: Input line fusing

C) SAFETY

1. Dielectric Withstand Voltage: 4242Vdc from primary to secondary
2. Touch Current: <0.25mA @ 240Vac input voltage

D) OTHER:

1. MTBF: 200,000 hours @ 25°C ambient temperature
2. Operating Temperature: 0°C to 40°C ambient temperature
3. Humidity: 0% to 90% relative humidity
4. Storage Temperature: -10°C to 80°C
5. ROHS 2: Complies with EU 2011/65/EU and China SJ/T 11363-2006

E) ENCLOSURE

1. Upper Housing: High impact plastic, 94V0 polycarbonate, non-vented
2. Lower Housing: High impact plastic, 94V0 polycarbonate, non-vented
3. Size: 57*48*26 +/-1.0mm

TO ADDRESS SYSTEM-LEVEL EMI CONCERNS, FERRITE CHOKES/BEADS MAY BE ADDED/REVISED UPON REQUEST. A SAMPLE KIT OF GLOBTEK'S STANDARD FERRITES IS AVAILABLE UNDER GLOBTEK P/N: EMI-MITIGATION-KIT1

FOR ADDITIONAL INFORMATION, PLEASE READ OUR WHITE PAPER AT: <https://r.globtek.info/3QeaqtD>

PROPRIETARY INFORMATION

PROPRIETARY OF GLOBTEK, INC. ANY REPRODUCTION, DISCLOSURE OR USE OF THIS DRAWING, IN WHOLE OR IN PART, IS HEREBY PROHIBITED EXCEPT AS SPECIFIED IN WRITING BY GLOBTEK, INC. © GlobTek, Inc. 2012 - 2025
quest / 05/14/2025 10:57:24 AM GMT

<p>GlobTek, Inc. www.globtek.com 186 Veterans Drive, Northvale, NJ 07647 Tel. (201) 784-1000 Fax (201) 784-0111</p>	<p>Drawing Title: GT-21088-0805-W2, ICT/ITE Power Supply, Efficiency Level: N/A, Case Color/Style: GlobTek Black, Wall Plug-in, Regulated Switchmode AC-DC Power Supply AC Adaptor, Input Rating: 100-240V~, 50-60 Hz, N. America NEMA 1-15 Fixed, , Output Rating: 7.50W, 5.0V@1.5A, Pin Out: Pin 1: +V (White), Pin 2: COM (Shield), Output Configuration: 1830 mm, 20/1C + Shield Cond, UL 1185, 2 PINS CONNECTOR CONXALL MICRO-CON-X TYPE, P/N: 16282-2SG-311, Ferrite: None, GlobTek Black, GT Cord # C51838, Blades/Input Cord: Fixed Blades North American 1-15P, Approvals:</p> <tr> <td data-bbox="305 262 1377 296"> Model No. GT-21088-0805-W2 </td><td data-bbox="1377 262 1546 296"></td></tr> <tr> <td data-bbox="305 296 1377 346"> Part No./Ordering No. WR9HA1500CXL-Y(R) </td><td data-bbox="1377 296 1546 346"> Rev E </td></tr>	Model No. GT-21088-0805-W2		Part No./Ordering No. WR9HA1500CXL-Y(R)	Rev E
Model No. GT-21088-0805-W2					
Part No./Ordering No. WR9HA1500CXL-Y(R)	Rev E				

Mechanical drawing

The image shows three mechanical views of a power supply unit. The top view is a front-facing perspective showing a rectangular body with a central square cutout. A dimension line indicates a width of 57. To the left, a cable with a multi-pin connector is shown. To the right, two pins extend from the unit. The bottom view is a side profile showing the thickness of the unit and the internal components. A dimension line indicates a height of 48. The right view is a top-down perspective showing the rectangular shape and the internal components. A dimension line indicates a depth of 26.

PROPRIETARY INFORMATION

PROPRIETARY OF GLOBTEK, INC. ANY REPRODUCTION, DISCLOSURE OR USE OF THIS DRAWING, IN WHOLE OR IN PART, IS HEREBY PROHIBITED EXCEPT AS SPECIFIED IN WRITING BY GLOBTEK, INC. © GlobTek, Inc. 2012 - 2025

quest / 05/14/2025 10:57:24 AM GMT

Page 5 of 21

GlobTek, Inc. www.globtek.com 186 Veterans Drive, Northvale, NJ 07647 Tel. (201) 784-1000 Fax (201) 784-0111	Drawing Title: GT-21088-0805-W2, ICT/ITE Power Supply, Efficiency Level: N/A, Case Color/Style: GlobTek Black, Wall Plug-in, Regulated Switchmode AC-DC Power Supply AC Adaptor, Input Rating: 100-240V~, 50-60 Hz, N. America NEMA 1-15 Fixed, , Output Rating: 7.50W, 5.0V@1.5A, Pin Out: Pin 1: +V (White), Pin 2: COM (Shield), Output Configuration: 1830 mm, 20/1C + Shield Cond, UL 1185, 2 PINS CONNECTOR CONXALL MICRO-CON-X TYPE, P/N: 16282-2SG-311, Ferrite: None, GlobTek Black, GT Cord # C51838, Blades/Input Cord: Fixed Blades North American 1-15P, Approvals:	
	Model No. GT-21088-0805-W2	
	Part No./Ordering No. WR9HA1500CXL-Y(R)	Rev E

Product Image

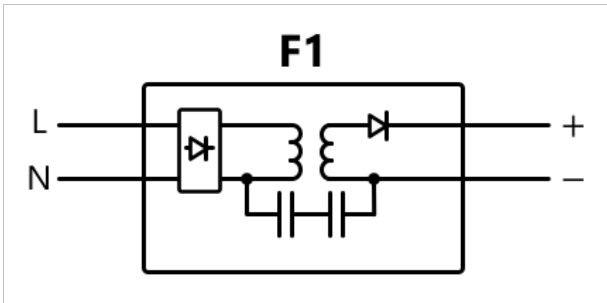
Web Overview

[https://www.globtek.com/_0/WR9HA1500CXL-Y\(R\)/o](https://www.globtek.com/_0/WR9HA1500CXL-Y(R)/o)

GlobTek, Inc. www.globtek.com 186 Veterans Drive, Northvale, NJ 07647 Tel. (201) 784-1000 Fax (201) 784-0111	Drawing Title: GT-21088-0805-W2, ICT/ITE Power Supply, Efficiency Level: N/A, Case Color/Style: GlobTek Black, Wall Plug-in, Regulated Switchmode AC-DC Power Supply AC Adaptor, Input Rating: 100-240V~, 50-60 Hz, N. America NEMA 1-15 Fixed, , Output Rating: 7.50W, 5.0V@1.5A, Pin Out: Pin 1: +V (White), Pin 2: COM (Shield), Output Configuration: 1830 mm, 20/1C + Shield Cond, UL 1185, 2 PINS CONNECTOR CONXALL MICRO-CON-X TYPE, P/N: 16282-2SG-311, Ferrite: None, GlobTek Black, GT Cord # C51838, Blades/Input Cord: Fixed Blades North American 1-15P, Approvals:	
	Model No. GT-21088-0805-W2	
	Part No./Ordering No. WR9HA1500CXL-Y(R)	Rev E

INPUT CONFIGURATION

(F1) Floating output, Class II / double insulated



[Alternate grounding configurations](#) available upon request.

Blades/Cord Included:FBNA2Fixed Blades North American 1-15P
Blades/Cord Installed:FBNA2Fixed Blades North American 1-15P

NEMA 1-15P
NEMA 1-15P, North America Blades, Class II 2 Conductors

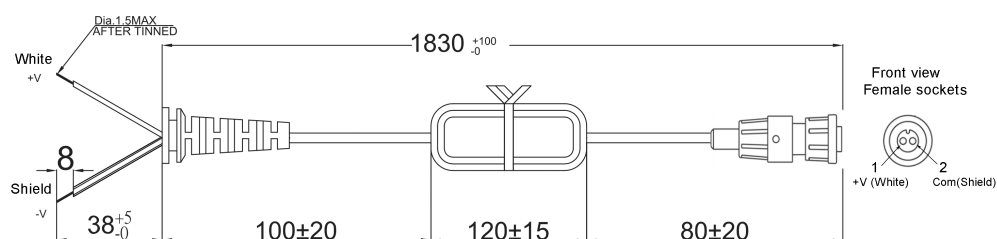
All NEMA 1 devices are two-wire non-grounding devices (hot-neutral) rated for 125 V maximum. NEMA 1-15P plugs have two parallel flat blades, 0.25 inches (6.35 mm) wide, 0.06 inches (1.524 mm) thick, 0.625-0.718 inches (15.875–18.256 mm) long, and spaced 0.5 inches (12.7 mm) apart.

GlobTek, Inc. www.globtek.com 186 Veterans Drive, Northvale, NJ 07647 Tel. (201) 784-1000 Fax (201) 784-0111	Drawing Title: GT-21088-0805-W2, ICT/ITE Power Supply, Efficiency Level: N/A, Case Color/Style: GlobTek Black, Wall Plug-in, Regulated Switchmode AC-DC Power Supply AC Adaptor, Input Rating: 100-240V~, 50-60 Hz, N. America NEMA 1-15 Fixed, , Output Rating: 7.50W, 5.0V@1.5A, Pin Out: Pin 1: +V (White), Pin 2: COM (Shield), Output Configuration: 1830 mm, 20/1C + Shield Cond, UL 1185, 2 PINS CONNECTOR CONXALL MICRO-CON-X TYPE, P/N: 16282-2SG-311, Ferrite: None, GlobTek Black, GT Cord # C51838, Blades/Input Cord: Fixed Blades North American 1-15P, Approvals: Model No. GT-21088-0805-W2 Part No./Ordering No. WR9HA1500CXL-Y(R) Rev E
---	--

OUTPUT CORD AND CONNECTOR: CON-2/C51838

ACTUAL CONNECTORS, OVERMOLDS, FERRITES MAY VARY SLIGHTLY FROM THE PICTURE BELOW

CABLE TYPE	UL 1185
CABLE LENGTH (mm)	1830
CABLE TOLERANCE (mm)	+100,-0
WIRE GAUGE (AWG)	20
CONDUCTORS	1C + Shield
HANK DIMENSION (mm)	120 ± 15
CABLE / CONNECTOR OVERMOLD COLOR	GlobTek Black
FERRITE TYPE AND DIMENSION	None
FERRITE NUMBER OF TURNS(Definition)	N/A
FERRITE DIMENSION FROM STRAIN RELIEF	N/A
FERRITE DIMENSION FROM PLUG	N/A
PLUG TYPE	2 PINS CONNECTOR CONXALL MICRO-CON-X TYPE, P/N: 16282-2SG-311
OUTPUT CONNECTOR GENDER	Female
OVERMOLDED	Yes
OVER MOLD ORIENTATION	N/A
CONNECTOR PIN OUT	Pin 1: +V (White), Pin 2: COM (Shield)



ADDITIONAL OUTPUT PLUG OPTIONS ARE AVAILABLE AT <https://www.globtek.com/en/connectors>
STANDARD PLUGS AND CONNECTORS CAN BE SEEN ONLINE AT <https://www.globtek.com/en/connectors>
CALCULATE VOLTAGE REGULATION/DROP WITH OUR ONLINE CALCULATOR: <https://www.globtek.com/r2/PtgjL>

GlobTek, Inc. www.globtek.com 186 Veterans Drive, Northvale, NJ 07647 Tel. (201) 784-1000 Fax (201) 784-0111	<div> Drawing Title: GT-21088-0805-W2, ICT/ITE Power Supply, Efficiency Level: N/A, Case Color/Style: GlobTek Black, Wall Plug-in, Regulated Switchmode AC-DC Power Supply AC Adaptor, Input Rating: 100-240V~, 50-60 Hz, N. America NEMA 1-15 Fixed, , Output Rating: 7.50W, 5.0V@1.5A, Pin Out: Pin 1: +V (White), Pin 2: COM (Shield), Output Configuration: 1830 mm, 20/1C + Shield Cond, UL 1185, 2 PINS CONNECTOR CONXALL MICRO-CON-X TYPE, P/N: 16282-2SG-311, Ferrite: None, GlobTek Black, GT Cord # C51838, Blades/Input Cord: Fixed Blades North American 1-15P, Approvals: </div> <div> Model No. GT-21088-0805-W2 </div> <div> <div>Part No./Ordering No. WR9HA1500CXL-Y(R)</div> <div>Rev E</div> </div>
---	--

OUTPUT CONNECTOR HOOK UP

TO ADDRESS SYSTEM-LEVEL EMI CONCERNS, FERRITE CHOKES/BEADS MAY BE ADDED/REVISED UPON REQUEST. A SAMPLE KIT OF GLOBTEK’S STANDARD FERRITES IS AVAILABLE UNDER GLOBTEK P/N: EMI-MITIGATION-KIT1

FOR ADDITIONAL INFORMATION, PLEASE READ OUR WHITE PAPER AT:
<https://www.globtek.com/en/technical-articles/ferrite-kit-radiated-emi-suppression-kit-for-globtek-power-supplies-cable-assemblies>

GlobTek, Inc. www.globtek.com 186 Veterans Drive, Northvale, NJ 07647 Tel. (201) 784-1000 Fax (201) 784-0111	Drawing Title: GT-21088-0805-W2, ICT/ITE Power Supply, Efficiency Level: N/A, Case Color/Style: GlobTek Black, Wall Plug-in, Regulated Switchmode AC-DC Power Supply AC Adaptor, Input Rating: 100-240V~, 50-60 Hz, N. America NEMA 1-15 Fixed, , Output Rating: 7.50W, 5.0V@1.5A, Pin Out: Pin 1: +V (White), Pin 2: COM (Shield), Output Configuration: 1830 mm, 20/1C + Shield Cond, UL 1185, 2 PINS CONNECTOR CONXALL MICRO-CON-X TYPE, P/N: 16282-2SG-311, Ferrite: None, GlobTek Black, GT Cord # C51838, Blades/Input Cord: Fixed Blades North American 1-15P, Approvals:	
	Model No. GT-21088-0805-W2	
	Part No./Ordering No. WR9HA1500CXL-Y(R)	Rev E

LABEL:L-1604

LABEL P/N	Standard GT - See Deviations
MATERIAL	Flat Thermal Transfer, Imprintable, Polyester Label and/or Pad Printed and/or Molded, and/or Laser Engraved in the case
BACKGROUND COLOR	Black if housing is Black, White or Silver if housing is White or Gray.
TEXT COLOR	White or Silver if label is Black Background for Black housing. Black if label is White or Silver background and Housing is White or Gray.
LABEL WIDTH (mm)	35.0
LABEL HEIGHT (mm)	29.0
SPECIAL BARCODE LABEL MATERIAL	No

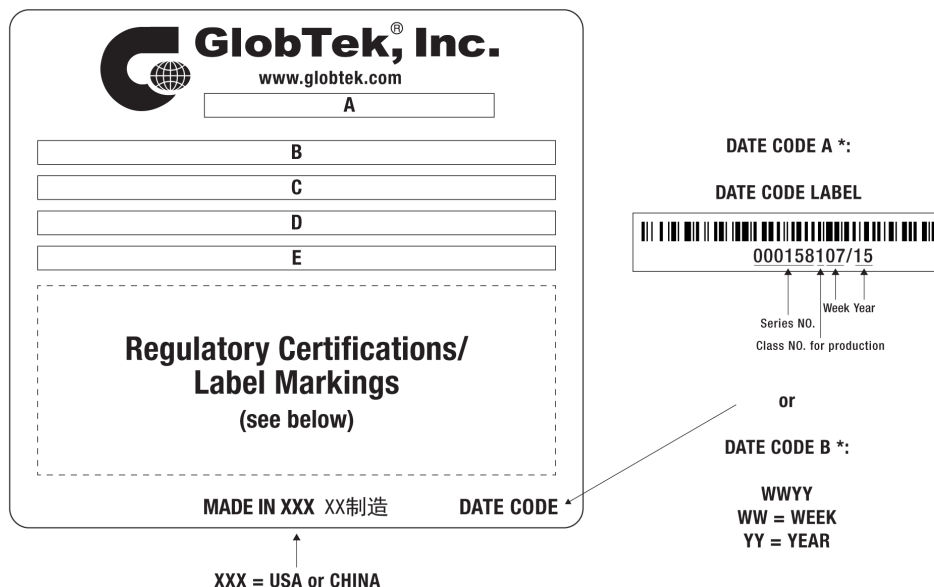
Below is the minimum information which will appear on the label. NOTE: in the logo area additional/actual positioning of symbols and text is subjected to change as per agency updates/requirements or additional model approvals become available.

Regulatory certifications/label markings may be in logo area on the label or molded into the case housing outside the label area.

Information will be shown via label and/or pad printed and/or molded and/or laser engraved in the case. * Date code markings at GlobTek option.




Please refer to the deviations section of the product specifications for additional details regarding the label.



A=ICT/ITE Power Supply
B=P/N: (料号) WR9HA1500CXL-Y(R)
C=Model (型号) GT-21088-0805-W2

GlobTek, Inc. www.globtek.com 186 Veterans Drive, Northvale, NJ 07647 Tel. (201) 784-1000 Fax (201) 784-0111	Drawing Title: GT-21088-0805-W2, ICT/ITE Power Supply, Efficiency Level: N/A, Case Color/Style: GlobTek Black, Wall Plug-in, Regulated Switchmode AC-DC Power Supply AC Adaptor, Input Rating: 100-240V~, 50-60 Hz, N. America NEMA 1-15 Fixed, , Output Rating: 7.50W, 5.0V@1.5A, Pin Out: Pin 1: +V (White), Pin 2: COM (Shield), Output Configuration: 1830 mm, 20/1C + Shield Cond, UL 1185, 2 PINS CONNECTOR CONXALL MICRO-CON-X TYPE, P/N: 16282-2SG-311, Ferrite: None, GlobTek Black, GT Cord # C51838, Blades/Input Cord: Fixed Blades North American 1-15P, Approvals:	
	Model No. GT-21088-0805-W2	
	Part No./Ordering No. WR9HA1500CXL-Y(R)	Rev E

D=Input (輸入)100-240V~, 50-60 Hz, 0.5A
E=Output (輸出)5.0 V  1.5 A, 7.50W

GlobTek, Inc. www.globtek.com 186 Veterans Drive, Northvale, NJ 07647 Tel. (201) 784-1000 Fax (201) 784-0111	Drawing Title: GT-21088-0805-W2, ICT/ITE Power Supply, Efficiency Level: N/A, Case Color/Style: GlobTek Black, Wall Plug-in, Regulated Switchmode AC-DC Power Supply AC Adaptor, Input Rating: 100-240V~, 50-60 Hz, N. America NEMA 1-15 Fixed, , Output Rating: 7.50W, 5.0V@1.5A, Pin Out: Pin 1: +V (White), Pin 2: COM (Shield), Output Configuration: 1830 mm, 20/1C + Shield Cond, UL 1185, 2 PINS CONNECTOR CONXALL MICRO-CON-X TYPE, P/N: 16282-2SG-311, Ferrite: None, GlobTek Black, GT Cord # C51838, Blades/Input Cord: Fixed Blades North American 1-15P, Approvals: Model No. GT-21088-0805-W2 Part No./Ordering No. WR9HA1500CXL-Y(R) Rev E
---	--

AGENCY ONLINE DOCUMENTS

CE EC-Declaration for Medical	Contact GlobTek for more information
CE EC-Declaration for Industrial/Commercial/ITE	https://cs.globtek.info/ec_declaration_product?id=01t30000002p9bH&i=4
CE EC-Declaration for Household	Contact GlobTek for more information
UKCA-Declaration for Medical	Contact GlobTek for more information
UKCA-Declaration for Industrial/Commercial/ITE	https://cs.globtek.info/ukca_declaration_product?id=01t30000002p9bH&i=4
UKCA-Declaration for Household	Contact GlobTek for more information
Morocco SDoC Declaration	https://cs.globtek.info/Morocco_SDoC_Declaration?id=a0Oa000000LNJEEAX
RoHS/RoHS3 Declaration	https://www.globtek.com/pdf/rohs_cert/01t30000002p9bHAAQ
REACH Declaration	https://www.globtek.com/pdf/iso_certificates/REACH.pdf
Conflict Minerals Declaration	https://www.globtek.com/pdf/conflict-minerals.pdf
Prop 65 Statement	https://www.globtek.com/prop-65-statement.pdf

IPXY rating is based on 3rd party testing and customers should check suitability and test system level IPXY rating before ordering.

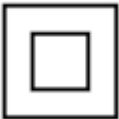
Regulatory Certifications/Label Markings

Below follows a link to the latest regulatory certifications and marks for this specific product. National standards as well as certification schemes are constantly changing and so is the set of certification marks and symbols applicable to this product. Various standards, marks and symbols, and certificates are subject to change at any time without notice.

Additional standards or unique country certifications are available upon request. Please contact Globtek to request a quotation.

LATEST PRODUCT/MODEL CERTIFICATIONS: <https://www.globtek.com/ds/nSUYJE5VZAq/bLAFGVR4xq2.html#datasheet>

AGENCY ONLINE DOCUMENTS



(F1) Floating output, Class II / double insulated

Front view
Female sockets



Pin 1: +V (White), Pin 2: COM (Shield)

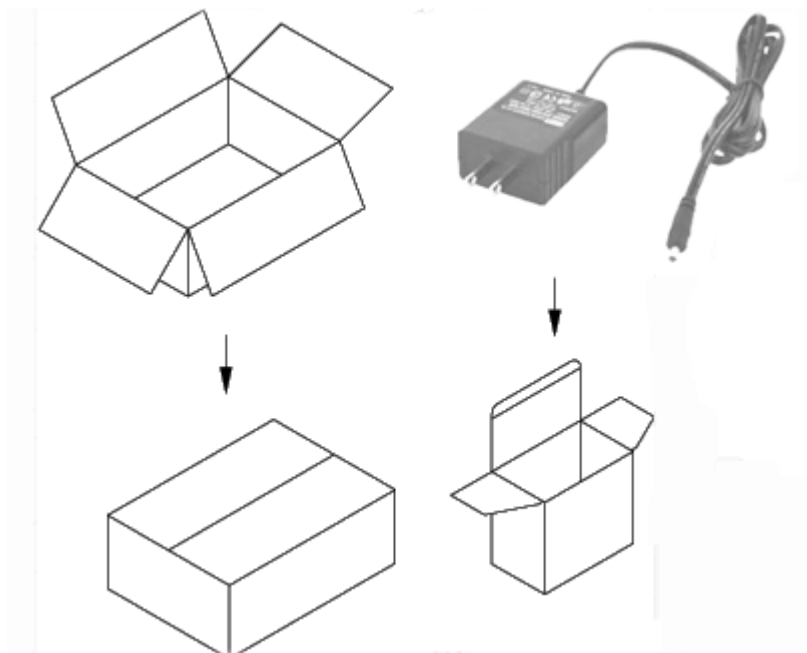
GlobTek, Inc. www.globtek.com 186 Veterans Drive, Northvale, NJ 07647 Tel. (201) 784-1000 Fax (201) 784-0111	Drawing Title: GT-21088-0805-W2, ICT/ITE Power Supply, Efficiency Level: N/A, Case Color/Style: GlobTek Black, Wall Plug-in, Regulated Switchmode AC-DC Power Supply AC Adaptor, Input Rating: 100-240V~, 50-60 Hz, N. America NEMA 1-15 Fixed, , Output Rating: 7.50W, 5.0V@1.5A, Pin Out: Pin 1: +V (White), Pin 2: COM (Shield), Output Configuration: 1830 mm, 20/1C + Shield Cond, UL 1185, 2 PINS CONNECTOR CONXALL MICRO-CON-X TYPE, P/N: 16282-2SG-311, Ferrite: None, GlobTek Black, GT Cord # C51838, Blades/Input Cord: Fixed Blades North American 1-15P, Approvals: Model No. GT-21088-0805-W2 Part No./Ordering No. WR9HA1500CXL-Y(R)	
		Rev E

PACKAGING

Packing Spec P/N	Standard GT-21088-W2, Individually Box, GT User Manual
Packing Quantity/Multiple/MPQ	90
Gift Box Size (mm)	135*75*30
Gift Box Color	White
Master Carton Size (mm)	455 x 405 x 220
Master Carton Cubic Volume (m³)	0.04
Master GW (Kg)	13.9 kg
BLADES INCLUDED	FBNA2: Fixed Blades North American 1-15P
BLADE/CORD INSTALLED	FBNA2: Fixed Blades North American 1-15P
USER MANUAL*	809-DESKTOPUSERMANUAL on A4 paper
USER MANUAL WEB LINK	https://www.globtek.com/pdf/809-DESKTOPUSERMANUAL.jpg

* This specification sheet is considered the user manual for all applications. It is expected that the buyer of this product will use it to formulate their own user manual for their end product and a user manual specifically for the power adapter is not usually required. If a user manual is not specifically listed above then none will be provided with this unit.

If specific packaging is required, this section must specify all requirements and note "no exceptions". If this section does not specify packaging, it is subject to change without notice at GlobTek's discretion



PROPRIETARY INFORMATION

PROPRIETARY OF GLOBTEK, INC. ANY REPRODUCTION, DISCLOSURE OR USE OF THIS DRAWING, IN WHOLE OR IN PART, IS HEREBY PROHIBITED EXCEPT AS SPECIFIED IN WRITING BY GLOBTEK, INC. © GlobTek, Inc. 2012 - 2025
quest / 05/14/2025 10:57:24 AM GMT Page 13 of 21

GlobTek, Inc. www.globtek.com 186 Veterans Drive, Northvale, NJ 07647 Tel. (201) 784-1000 Fax (201) 784-0111	Drawing Title: GT-21088-0805-W2, ICT/ITE Power Supply, Efficiency Level: N/A, Case Color/Style: GlobTek Black, Wall Plug-in, Regulated Switchmode AC-DC Power Supply AC Adaptor, Input Rating: 100-240V~, 50-60 Hz, N. America NEMA 1-15 Fixed, , Output Rating: 7.50W, 5.0V@1.5A, Pin Out: Pin 1: +V (White), Pin 2: COM (Shield), Output Configuration: 1830 mm, 20/1C + Shield Cond, UL 1185, 2 PINS CONNECTOR CONXALL MICRO-CON-X TYPE, P/N: 16282-2SG-311, Ferrite: None, GlobTek Black, GT Cord # C51838, Blades/Input Cord: Fixed Blades North American 1-15P, Approvals:	
	Model No. GT-21088-0805-W2	
	Part No./Ordering No. WR9HA1500CXL-Y(R)	Rev E

INSTRUCTIONS TO THE OEM SYSTEMS ENGINEER

It is the responsibility of the OEM systems engineer to provide the end system user instructions and warnings for the use of this product in the end system.

If an input cord is required for this product, AC Mains voltage should be provided to the power supply by a power supply cord approved to the national standards of the country in which it will be used.

This product is not designed to be repaired. No serviceable parts inside. A blown internal fuse is an indication of catastrophic failure of circuit component(s). If a Failure Analysis is required for a failed power supply/battery charger, please return the damaged unit to GlobTek for an accurate determination of the root cause of the failure.

EMC Compliance of the complete OEM product, including the GlobTek power supply/battery charger needs to be verified by the OEM systems engineer.

GlobTek, Inc. www.globtek.com 186 Veterans Drive, Northvale, NJ 07647 Tel. (201) 784-1000 Fax (201) 784-0111	Drawing Title: GT-21088-0805-W2, ICT/ITE Power Supply, Efficiency Level: N/A, Case Color/Style: GlobTek Black, Wall Plug-in, Regulated Switchmode AC-DC Power Supply AC Adaptor, Input Rating: 100-240V~, 50-60 Hz, N. America NEMA 1-15 Fixed, , Output Rating: 7.50W, 5.0V@1.5A, Pin Out: Pin 1: +V (White), Pin 2: COM (Shield), Output Configuration: 1830 mm, 20/1C + Shield Cond, UL 1185, 2 PINS CONNECTOR CONXALL MICRO-CON-X TYPE, P/N: 16282-2SG-311, Ferrite: None, GlobTek Black, GT Cord # C51838, Blades/Input Cord: Fixed Blades North American 1-15P, Approvals:	
	Model No. GT-21088-0805-W2	
	Part No./Ordering No. WR9HA1500CXL-Y(R)	Rev E

INSTRUCTION SHEET

N/A

GlobTek, Inc. www.globtek.com 186 Veterans Drive, Northvale, NJ 07647 Tel. (201) 784-1000 Fax (201) 784-0111	Drawing Title: GT-21088-0805-W2, ICT/ITE Power Supply, Efficiency Level: N/A, Case Color/Style: GlobTek Black, Wall Plug-in, Regulated Switchmode AC-DC Power Supply AC Adaptor, Input Rating: 100-240V~, 50-60 Hz, N. America NEMA 1-15 Fixed, , Output Rating: 7.50W, 5.0V@1.5A, Pin Out: Pin 1: +V (White), Pin 2: COM (Shield), Output Configuration: 1830 mm, 20/1C + Shield Cond, UL 1185, 2 PINS CONNECTOR CONXALL MICRO-CON-X TYPE, P/N: 16282-2SG-311, Ferrite: None, GlobTek Black, GT Cord # C51838, Blades/Input Cord: Fixed Blades North American 1-15P, Approvals:
	Model No. GT-21088-0805-W2
	Part No./Ordering No. WR9HA1500CXL-Y(R)
	Rev E

TERMS AND CONDITIONS

THESE TERMS AND CONDITIONS GOVERN THE SALE OF ALL PRODUCTS AND SERVICES ("PRODUCTS") BY GlobTek, Inc. ("GlobTek") AND APPLY NOTWITHSTANDING ANY CONFLICTING, CONTRARY OR ADDITIONAL TERMS AND CONDITIONS IN ANY PURCHASE ORDER OR OTHER DOCUMENT OR COMMUNICATION ("PURCHASE ORDER") FROM BUYER. THESE TERMS AND CONDITIONS MAY ONLY BE WAIVED OR MODIFIED IN A WRITTEN AGREEMENT SIGNED BY AN AUTHORIZED REPRESENTATIVE OF THE SELLER. NEITHER SELLER'S ACKNOWLEDGEMENT OF A PURCHASE ORDER NOR SELLER'S FAILURE TO OBJECT TO CONFLICTING, CONTRARY OR ADDITIONAL TERMS AND CONDITIONS IN A PURCHASE ORDER SHALL BE DEEMED AN ACCEPTANCE OF SUCH TERMS AND CONDITIONS OR A WAIVER OF THE PROVISIONS HEREOF.

ORDERS:

1. Buyer must issue a Purchase Order or otherwise place an order by means acceptable to GlobTek. Orders shall identify the Products, unit quantities, part numbers, descriptions, applicable prices, ship to address and requested delivery dates. All orders are subject to acceptance by GlobTek. No order may be cancelled or rescheduled without GlobTek's consent. Consent may be given by GlobTek in its sole discretion. GlobTek reserves the right to add a Rescheduling Fee should Seller deem applicable. Seller reserves the right to allocate sales of Products among its customers in its sole discretion.

RESTOCKING TERMS:

1. Returning of stock items only: All claims must be made within ten (10) days of receipt of goods. GlobTek must authorize all returns. No return of product will be accepted without GlobTek's Return Merchandise Authorization (RMA) number. All authorized returns will be subject to a minimum of 25% restocking charge* and buyer must pay return freight to GlobTek. Parts must be in original condition and packaging.
2. *Custom items and/or dedicated production lots are not returnable.

RETURNED MERCHANDISE:

1. Replacement or credit will not be allowed for products returned without prior consent. No return of product will be accepted without a GlobTek RMA number. RMA requests for all goods that are found to be not in compliance with Seller's specifications shall be made according to Seller's RMA procedure within thirty (30) days of invoice/shipment date and may be replaced, repaired, or credited at GlobTek's option. All RMA claims reported more than thirty (30) days after the invoice/shipment date are not eligible for return, replacement or credit at subject to GlobTek's Terms and Conditions. GlobTek will not issue credit if the Product has been altered, repaired, or opened by persons other than those authorized by GlobTek, become defective due to acts of God or negligence, become defective due to being subjected to abnormal conditions during installation, application or maintenance or if warranty has expired. Acceptance of Buyer's debit will not be made until material has been received and evaluated by the GlobTek. To determine the "Root Cause of Failure", the product may be destroyed during evaluation. If this occurs all of the above Terms and Conditions will remain in effect. All freight costs for returns, both from customer back to GlobTek and GlobTek back to customer will not be borne by GlobTek. GlobTek requires all goods to be returned freight, duty, and taxes prepaid to the location provided in the RMA authorization notification and repaired or replaced goods will be provided

GlobTek, Inc. www.globtek.com 186 Veterans Drive, Northvale, NJ 07647 Tel. (201) 784-1000 Fax (201) 784-0111	Drawing Title: GT-21088-0805-W2, ICT/ITE Power Supply, Efficiency Level: N/A, Case Color/Style: GlobTek Black, Wall Plug-in, Regulated Switchmode AC-DC Power Supply AC Adaptor, Input Rating: 100-240V~, 50-60 Hz, N. America NEMA 1-15 Fixed, , Output Rating: 7.50W, 5.0V@1.5A, Pin Out: Pin 1: +V (White), Pin 2: COM (Shield), Output Configuration: 1830 mm, 20/1C + Shield Cond, UL 1185, 2 PINS CONNECTOR CONXALL MICRO-CON-X TYPE, P/N: 16282-2SG-311, Ferrite: None, GlobTek Black, GT Cord # C51838, Blades/Input Cord: Fixed Blades North American 1-15P, Approvals:
	Model No. GT-21088-0805-W2
	Part No./Ordering No. WR9HA1500CXL-Y(R)
	Rev E

on an EX WORKS return location. GlobTek shall not be responsible, under any circumstances, for any rework or modification fee's or costs not previously authorized in writing by GlobTek. If returned goods do not match the quantity or descriptions provided in the RMA application, any non conforming goods will not be qualified for repair, return, or replacement. Goods with illegible date code/serial # information may not be eligible for repair, return, replacement

PRICES/TAXES/TARIFFS:

- Prices shall be as specified by Seller and shall be applicable for the period specified in GlobTek's quote. If no period is specified, prices shall be applicable for thirty (30) days. Notwithstanding the foregoing, prices shall be subject to increase in the event of an increase in GlobTek's costs or other circumstances beyond GlobTek's reasonable control. Prices are exclusive of taxes, impositions, tariffs, fees, and other charges, including, without limitation, sales, use, excise, value added, and ad valorem taxes, as well as tariffs of all types (including any tariffs imposed pursuant to any Section 301 Action by the United States Trade Representative) and similar taxes, fees, imposts, or charges of whatsoever kind, imposed now or in the future by any foreign or domestic governmental authority, international shipping charges, forwarding agent's and broker's fees, consular fees, document fees and import duties. If GlobTek shall be liable to collect and/or pay, or if the GlobTek shall pay, any of the foregoing, Buyer shall pay same to GlobTek in addition to the price of the Products.

TERMS OF PAYMENT:

- Payment shall be net thirty (30) days from date of invoice or as otherwise specified by GlobTek. Buyer agrees to pay the entire net amount of each invoice from Seller pursuant to the terms of each such invoice without offset or deduction. Orders are subject to credit approval by GlobTek, which may in its sole discretion at any time change the terms of Buyer's credit, require payment in cash, bank wire transfer, or by official bank check and/or require payment of any or all amounts due or to become due for Buyer's order before shipment of any or any of the Products. If GlobTek believes in good faith that Buyer's ability to make payments may be impaired or if Buyer shall fail to pay any invoice when due, GlobTek may suspend delivery of any order or any remaining balance thereof until such payment is made or cancel any order or any remaining balance thereof, and Buyer shall remain liable to pay for any Products already shipped and all Products ordered by Buyer. Buyer agrees to submit such financial information from time to time as may be reasonably requested by GlobTek for the establishment and/or continuation of credit terms. Checks are accepted subject to collection and the date of collection shall be deemed the date of payment. Any check received from Buyer may be applied by GlobTek against any obligation owing from Buyer to GlobTek, regardless of any statement appearing on or referring to such check, without discharging Buyer's liability for any additional amounts owing from Buyer to GlobTek, and the acceptance by GlobTek of such check shall not constitute a waiver of GlobTek's right to pursue the collection of any remaining balance. Buyer shall pay interest on any invoice not paid when due according to the due date at the rate of eighteen (18%) percent annually or the highest rate allowable by law. If Buyer fails to make payment when due, GlobTek may pursue any legal or equitable remedies, in which event GlobTek shall be entitled to reimbursement for costs of collection and reasonable attorneys fees.

REFUSED OR DAMAGED SHIPMENTS:

- All products returned to GlobTek due to refusal of acceptance by buyer, without GlobTek authorization, will be subject to minimum of 25% restocking charge* and buyer must pay return freight to GlobTek. Parts must be in original condition and packaging. Seller takes extra precautions to insure that shipments are made under the Highest Quality Standards. In the event a

GlobTek, Inc. www.globtek.com 186 Veterans Drive, Northvale, NJ 07647 Tel. (201) 784-1000 Fax (201) 784-0111	Drawing Title: GT-21088-0805-W2, ICT/ITE Power Supply, Efficiency Level: N/A, Case Color/Style: GlobTek Black, Wall Plug-in, Regulated Switchmode AC-DC Power Supply AC Adaptor, Input Rating: 100-240V~, 50-60 Hz, N. America NEMA 1-15 Fixed, , Output Rating: 7.50W, 5.0V@1.5A, Pin Out: Pin 1: +V (White), Pin 2: COM (Shield), Output Configuration: 1830 mm, 20/1C + Shield Cond, UL 1185, 2 PINS CONNECTOR CONXALL MICRO-CON-X TYPE, P/N: 16282-2SG-311, Ferrite: None, GlobTek Black, GT Cord # C51838, Blades/Input Cord: Fixed Blades North American 1-15P, Approvals:
	Model No. GT-21088-0805-W2
	Part No./Ordering No. WR9HA1500CXL-Y(R)
	Rev E

shipment is received in damaged condition, Buyer shall contact the carrier to submit claim, keep Products in original boxes pending carrier's inspection and place a replacement order with the Seller.

2. *Custom items and/or dedicated production lots are not returnable.

TECHNICAL ADVICE AND DATA:

1. Any technical advice offered or given in connection with the use of any goods is an accommodation to Buyer without charge and GlobTek shall have no responsibility or liability whatsoever for the content or use of such advice. Without GlobTek's prior written consent, Buyer shall not use, duplicate or disclose any technical data delivered or disclosed by GlobTek to Buyer for any purposes other than for installation, operation or maintenance of goods purchased by Buyer. Any use made of GlobTek classifications, whether it be ECCNs or any variation of Harmonized Tariff codes, is without recourse to GlobTek and at the user's risk. Export classifications are subject to change. If you export or re-export, your company, as the exporter of record, is responsible for determining the correct classification of any item at the time of export. Any export classification by GlobTek is for GlobTek's internal use only and shall not be construed as a representation or warranty regarding the proper export classification nor relied upon to make licensing determinations.

Tariff Surcharge – Section 301 and Related Import Duties

GlobTek, Inc. hereby notifies all customers that a tariff surcharge fee is applied to cover import duties and tariffs, including but not limited to those imposed under Section 301 of the U.S. Trade Act of 1974, affecting Chinese-origin goods imported into the United States between 2018 and 2025.

Customers receiving delivery from U.S.-based shipping points were and are informed of the tariff surcharge:

- At the time of quotation;
- During order entry; and
- Through routine updates issued during the order process.

Due to the volatility of tariff rates and ongoing changes in U.S. trade policy, GlobTek reserves the right to adjust the tariff surcharge fee:

- To match the current applicable tariff rates, or
- To reflect the maximum applicable tariff rate assessed on the product(s) in question, depending on the date of importation into the U.S.

By placing an order with GlobTek for goods that are produced in china built to order and imported from China, the customer expressly acknowledges and agrees to pay the applicable tariff surcharge fee. This surcharge is non-negotiable and is considered a part of the total purchase price for applicable transactions.

GlobTek, Inc. www.globtek.com 186 Veterans Drive, Northvale, NJ 07647 Tel. (201) 784-1000 Fax (201) 784-0111	Drawing Title: GT-21088-0805-W2, ICT/ITE Power Supply, Efficiency Level: N/A, Case Color/Style: GlobTek Black, Wall Plug-in, Regulated Switchmode AC-DC Power Supply AC Adaptor, Input Rating: 100-240V~, 50-60 Hz, N. America NEMA 1-15 Fixed, , Output Rating: 7.50W, 5.0V@1.5A, Pin Out: Pin 1: +V (White), Pin 2: COM (Shield), Output Configuration: 1830 mm, 20/1C + Shield Cond, UL 1185, 2 PINS CONNECTOR CONXALL MICRO-CON-X TYPE, P/N: 16282-2SG-311, Ferrite: None, GlobTek Black, GT Cord # C51838, Blades/Input Cord: Fixed Blades North American 1-15P, Approvals:
	Model No. GT-21088-0805-W2
	Part No./Ordering No. WR9HA1500CXL-Y(R) Rev E

FORCE MAJEURE:

1. GlobTek shall not be liable for failure to fulfill the obligations herein or for delays in delivery due to causes beyond its reasonable control, including, but not limited to, acts of God, natural disasters, acts or omissions of other parties acts or omissions of civil or military authority, Government priorities, changes in law, material shortages, fire, strikes, floods, epidemics, quarantine restrictions, riots, war, acts of terrorism, delays in transportation or inability to obtain labor or materials through its regular sources. GlobTek's time for performance of any such obligation shall be extended for the time period of such delay or GlobTek may, at its option cancel any order or remaining part thereof without liability, advising in writing notice of such cancellation to Buyer.

LIMITATION OF LIABILITIES:

1. BUYER SHALL NOT IN ANY EVENT BE ENTITLED TO, AND SELLER SHALL NOT BE LIABLE FOR INDIRECT, SPECIAL, INCIDENTAL OR CONSEQUENTIAL DAMAGES OF ANY NATURE INCLUDING, WITHOUT LIMITATION BUSINESS INTERRUPTION COSTS, REMOVAL AND/OR REINSTALLATION COSTS, REPROCUREMENT COSTS, LOSS OF PROFIT OR REVENUE, LOSS OF DATA, PROMOTIONAL OR MANUFACTURING EXPENSES, OVERHEAD, INJURY TO REPUTATION OR LOSS OF CUSTOMERS, EVEN IF GLOBTEK HAS BEEN ADVISED OF THE POSSIBILITY OF SUCH DAMAGES. BUYER'S RECOVERY FROM SELLER FOR ANY CLAIM SHALL NOT EXCEED BUYER'S PURCHASE PRICE FOR THE PRODUCT GIVING RISE SUCH CLAIM IRRESPECTIVE OF THE NATURE OF THE CLAIM, WHETHER IN CONTRACT, TORT, WARRANTY OR OTHERWISE. GLOBTEK SHALL NOT BE LIABLE FOR AND BUYER SHALL INDEMNIFY, DEFEND AND HOLD GLOBTEK HARMLESS FROM ANY CLAIMS BASED ON GLOBTEK'S COMPLIANCE WITH BUYER'S DESIGNS, SPECIFICATIONS OR INSTRUCTIONS, OR MODIFICATION OF ANY PRODUCTS BY PARTIES OTHER THAN SELLER, OR USE IN COMBINATION WITH OTHER PRODUCTS. GLOBTEK INC. WILL NOT BE LIABLE FOR THE SAFETY AND PERFORMANCE OF THESE PRODUCTS IF UNAUTHORIZED USE, ACCESS AND/OR REPAIR. END USER SHOULD CONSULT APPLICABLE UL, CSA OR EN STANDARDS FOR PROPER INSTALLATION INSTRUCTIONS. GLOBTEK PRODUCTS ARE NOT AUTHORIZED FOR USE AS MISSION CRITICAL COMPONENTS IN LIFE SUPPORT, HAZARDOUS ENVIRONMENT, NUCLEAR OR AIRCRAFT APPLICATIONS WITHOUT PRIOR WRITTEN APPROVAL FROM THE CEO OF GLOBTEK INC. CONTENTS OF GLOBTEK SPECIFICATIONS ARE SUBJECT TO CHANGE WITHOUT PRIOR NOTICE.

GENERAL:

1. As used herein, terms appearing in the singular shall include the plural and terms appearing in the plural shall include singular. No rights, duties, agreements or obligations hereunder may be assigned or transferred by either party, by operation of law, merger or otherwise, without the prior written consent of the other. Any attempted or purported assignment shall be void. Notwithstanding the foregoing, GlobTek's obligations under these Terms and Conditions may be performed by divisions, subsidiaries or affiliates of GlobTek. The obligations, rights, terms and conditions hereof shall be binding on the parties hereto and their respective successors and assigns. The waiver of any provision hereof or of any breach or default hereunder shall not be deemed a waiver of any other provision hereof or breach or default hereunder. Any provision hereof which is prohibited or

GlobTek, Inc. www.globtek.com 186 Veterans Drive, Northvale, NJ 07647 Tel. (201) 784-1000 Fax (201) 784-0111	Drawing Title: GT-21088-0805-W2, ICT/ITE Power Supply, Efficiency Level: N/A, Case Color/Style: GlobTek Black, Wall Plug-in, Regulated Switchmode AC-DC Power Supply AC Adaptor, Input Rating: 100-240V~, 50-60 Hz, N. America NEMA 1-15 Fixed, , Output Rating: 7.50W, 5.0V@1.5A, Pin Out: Pin 1: +V (White), Pin 2: COM (Shield), Output Configuration: 1830 mm, 20/1C + Shield Cond, UL 1185, 2 PINS CONNECTOR CONXALL MICRO-CON-X TYPE, P/N: 16282-2SG-311, Ferrite: None, GlobTek Black, GT Cord # C51838, Blades/Input Cord: Fixed Blades North American 1-15P, Approvals:
	Model No. GT-21088-0805-W2
	Part No./Ordering No. WR9HA1500CXL-Y(R)
	Rev E

unenforceable in any jurisdiction shall, as to such jurisdiction, be ineffective to the extent of such prohibition or unenforceability without invalidating the remaining provisions hereof in that jurisdiction or affecting the validity or enforceability of such provision in any other jurisdiction. These Terms and Conditions shall be governed by and construed in accordance with the laws of the State of New Jersey, United States, excluding any law or principle, which would apply the law of any other jurisdiction. The United Nations Convention on contracts for the International Sale of Goods shall not apply to these Terms.

LIMITED WARRANTIES:

1. GLOBTEK'S POWER SUPPLIES ARE BUILT WITH PRIDE BY PROFESSIONALS DEDICATED TO UNCOMPROMISING QUALITY AND RELIABILITY. YOUR COMPLETE SATISFACTION WITH OUR PRODUCTS IS OUR PARAMOUNT OBJECTIVE. IF GLOBTEK IS GIVEN NOTICE OF A DEFECT IN MATERIALS OR WORKMANSHIP OCCURRING WITHIN FIVE (5) YEARS FROM THE DATE OF SHIPMENT BY GLOBTEK, THEN GLOBTEK SHALL, AT ITS SOLE OPTION: 1) REPAIR OR REPLACE THE DEFECTIVE PART(S) OR PRODUCT(S) OR 2) REFUND THE ORIGINAL PURCHASE PRICE, BOTH SUBJECT TO THE FOLLOWING PROVISIONS OF THIS PARAGRAPH. THIS WARRANTY ONLY EXTENDS TO POWER SUPPLIES, ELECTRICAL ASSEMBLIES AND POWER CABLES MADE BY GLOBTEK. THIS WARRANTY DOES NOT EXTEND TO ANY AND ALL BATTERY CELLS, OR TO BRANDED CONNECTOR ITEMS, CUSTOMER SPECIFIED ITEMS FROM OTHER MANUFACTURERS, CUSTOMER SUPPLIED MATERIALS, OR DEFECTS RESULTING FROM CUSTOMER SUPPLIED MATERIALS. DEFECTS RESULTING FROM CUSTOMER SUPPLIED MATERIALS WILL NULLIFY THIS WARRANTY. THIS WARRANTY ALSO DOES NOT EXTEND TO PRODUCTS WHICH HAVE BEEN OPENED, ALTERED OR REPAIRED BY PERSONS OTHER THAN PERSONS AUTHORIZED BY THE MANUFACTURER OR TO PRODUCTS WHICH BECOME DEFECTIVE DUE TO ACTS OF GOD AND OTHER ACTS CONSTITUTING FORCE MAJEURE AS DEFINED IN SECTION 8 ABOVE, NEGLIGENCE OR THE FAILURE OF THE USER TO FULLY FOLLOW INSTRUCTIONS WITH RESPECT TO INSTALLATION, APPLICATION OR MAINTENANCE. THIS WARRANTY DOES NOT EXTEND TO PRODUCTS WHICH HAVE BEEN SUBJECT TO ABNORMAL USE, ABNORMAL CONDITIONS, IMPROPER STORAGE, SPILLAGE OF LIQUIDS, MISUSE, NEGLECT, EXPOSURE TO CLEANING AGENTS NOT RECOMMENDED BY THE MANUFACTURER, OR OTHER ACTS WHICH ARE NOT THE FAULT OF GLOBTEK. THIS WARRANTY DOES NOT COVER ORDINARY WEAR AND TEAR, DEFECTS IN APPEARANCE, COSMETIC, DECORATIVE OR STRUCTURAL ITEMS OR NON-OPERATIVE PARTS. WITH REGARD TO BATTERY CELLS, OR TO BRANDED CONNECTOR ITEMS, CUSTOMER SPECIFIED ITEMS FROM OTHER MANUFACTURERS, AND CUSTOMER SUPPLIED MATERIALS, THE BUYER IS REFERRED TO THE MANUFACTURER'S WARRANTY, IF ANY. FOR RECHARGEABLE BATTERY PACK PRODUCTS, ANY CLAIM FOR WARRANTY MUST BE SUPPORTED BY AUDITABLE EVIDENCE OF PROPER USE, HANDLING, AND MAINTENANCE ACCORDING TO GLOBTEK AND CELL MANUFACTURER SPECIFICATIONS. THIS WARRANTY IS NOT A WARRANTY OF FUTURE PERFORMANCE. IN ORDER TO EXERCISE THE BUYER'S REMEDY FOR BREACH OF THIS LIMITED WARRANTY, GLOBTEK MUST BE GIVEN WRITTEN NOTICE OF A DEFECT IN MATERIALS OR WORKMANSHIP WITHIN FIVE (5) YEARS OF THE DATE OF SHIPMENT. FURTHER, GLOBTEK'S INSPECTION ESTABLISHES THE EXISTENCE OF A DEFECT. PACKAGING, FREIGHT, INSURANCE AND OTHER CHARGES INCURRED IN RETURNING THE DEFECTIVE PRODUCTS TO WILL BE PAID BY THE BUYER. IF THE BUYER FAILS TO FULLY COMPLY WITH THE FOREGOING, BUYER SHALL NOT BE ENTITLED TO ANY ALLOWANCE OR CLAIM WITH RESPECT TO SUCH PRODUCT. THE BUYER AGREES THAT NO OTHER REMEDY (INCLUDING, BUT NOT LIMITED TO, INCIDENTAL OR CONSEQUENTIAL DAMAGES FOR LOST PROFITS, LOST SALES, INJURY TO PERSON OR PROPERTY OR ANY OTHER INCIDENTAL OR CONSEQUENTIAL LOSSES) SHALL BE AVAILABLE TO THE BUYER.

GlobTek, Inc. www.globtek.com 186 Veterans Drive, Northvale, NJ 07647 Tel. (201) 784-1000 Fax (201) 784-0111	Drawing Title: GT-21088-0805-W2, ICT/ITE Power Supply, Efficiency Level: N/A, Case Color/Style: GlobTek Black, Wall Plug-in, Regulated Switchmode AC-DC Power Supply AC Adaptor, Input Rating: 100-240V~, 50-60 Hz, N. America NEMA 1-15 Fixed, , Output Rating: 7.50W, 5.0V@1.5A, Pin Out: Pin 1: +V (White), Pin 2: COM (Shield), Output Configuration: 1830 mm, 20/1C + Shield Cond, UL 1185, 2 PINS CONNECTOR CONXALL MICRO-CON-X TYPE, P/N: 16282-2SG-311, Ferrite: None, GlobTek Black, GT Cord # C51838, Blades/Input Cord: Fixed Blades North American 1-15P, Approvals:	
	Model No. GT-21088-0805-W2	
	Part No./Ordering No. WR9HA1500CXL-Y(R)	Rev E

2. EXCEPT FOR THE FOREGOING EXPRESS LIMITED WARRANTY, GLOBTEK MAKES NO WARRANTY, EXPRESS OR IMPLIED, INCLUDING, BUT NOT LIMITED TO, THE WARRANTIES OF MERCHANTABILITY AND FITNESS FOR A PARTICULAR PURPOSE, ALL OF WHICH IMPLIED WARRANTIES ARE HEREBY SPECIFICALLY DISCLAIMED.