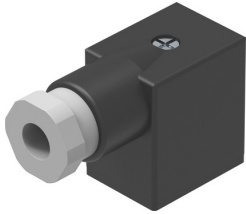



Plug socket MSSD-F

Part number: 34431

FESTO



 General operating condition

Data sheet

Feature	Value
Type of mounting	On air solenoid valve with M3 central screw
Cable outlet	Angled
Note on cable outlet	Can be rotated through 180°
Mounting position	Any
Product weight	17 g
Electrical connection	3-pin Socket, angled Rectangular design MSF
Electrical connection 1, design	Rectangular
Electrical connection 1, connection type	Socket
Electrical connection 1, cable outlet	Angled
Electrical connection 1, number of pins/wires	3
Electrical connection for input 1, connection pattern	00995628
Electrical connection 2	Screw terminal
DC operating voltage range	0 V ... 250 V
Operating voltage range AC	0 V ... 250 V
Current rating at 40° C	16 A
Protective earth connection	Available
Cable fitting	Pg9
Cable diameter	6 mm ... 8 mm
Nominal conductor cross section	≤1.5 mm ²
Degree of protection	IP65
Note on degree of protection	In mounted state
Ambient temperature	-25 °C ... 90 °C
CE marking (see declaration of conformity)	As per EU low voltage directive As per EU RoHS directive
UKCA marking (see declaration of conformity)	To UK RoHS instructions To UK instructions for electrical equipment
LABS (PWIS) conformity	VDMA24364-B2-L
Housing material	Polymer
Housing colour	Black
Seals material	NBR