



## D900 Series

### Open Frame Unregulated Power Supplies

Model D900 12Vdc 10A  
Model D901 12Vdc 20A

Model D902 24Vdc 5A  
Model D903 24Vdc 10A

Model D904 24Vdc 20A  
Model D905 48Vdc 5A

The EMS D900 Series unregulated power supplies are designed for industrial applications. They are built on open frame 'L' shaped aluminium chassis that comply with industry standard sizes, and have mounting holes on all faces.

The input transformer features a split bobbin construction for improved primary to secondary insulation. Supply connections are made by a four way terminal block. Links must be fitted by the user to suit either 115Vac or 230Vac.

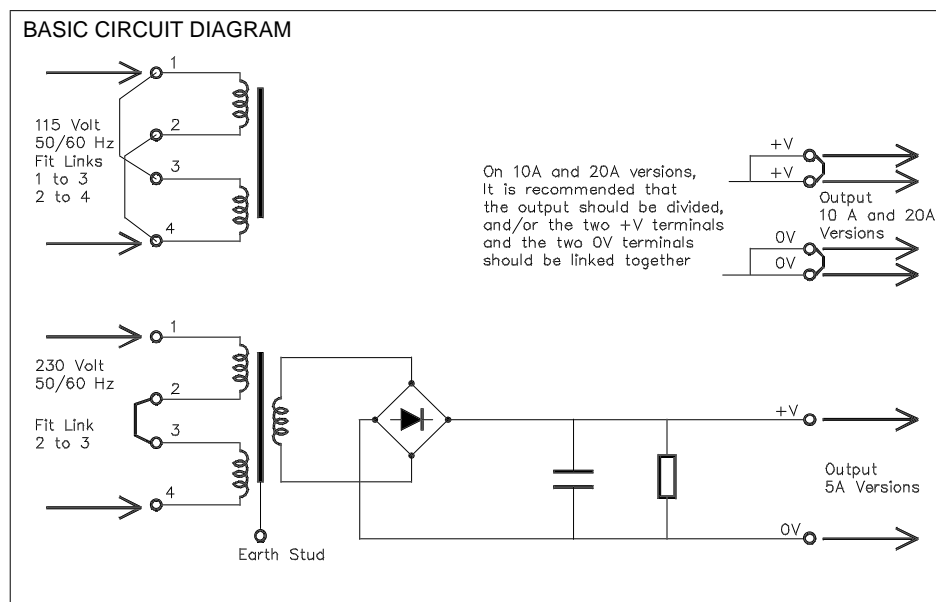
The output connections are made by a two-way terminal block for the 5A output versions or by a four way terminal block for the 10A and 20A output versions. When making output connections to the 10A and 20A versions, it is strongly recommended that a link is fitted between the two + Volt terminals and the two 0 Volt terminals.

The units are designed to meet the requirements of safety standard EN60950, and the units comply with EMC standard EN5022 curve B.

It is recommended that the units are mounted using the largest face and in a position that allows adequate convected ventilation. In some applications, it may be necessary to fit additional heat sinks and to provide forced air circulation to prevent the units overheating.

**In all applications the supply must be fused using an anti-surge type fuse.**

**In all applications the chassis must be connected to a suitable earth point.**



Technical Specification	Model D900	Model D901	Model D902	Model D903	Model D904	Model D905
Supply Voltage	115V / 230 Vac					
Frequency	50 / 60 Hz					
Power Rating	200 VA	400 VA	200 VA	400 VA	600 VA	400 VA
No Load Output Voltage ( Typical )	15 Vdc	15 Vdc	30 Vdc	30 Vdc	30 Vdc	60 Vdc
Nominal Output Voltage	12 Vdc	12 Vdc	24 Vdc	24 Vdc	24 Vdc	48 Vdc
Ripple ( RMS at Full Load )	10 % Nominal Output Voltage					
Output Current	10 A	20 A	5 A	10 A	20 A	5 A
Weight	5 Kg	6 Kg	5 Kg	6 Kg	7.5 Kg	6 Kg
Operating Temperature	0 to 40 °C					

