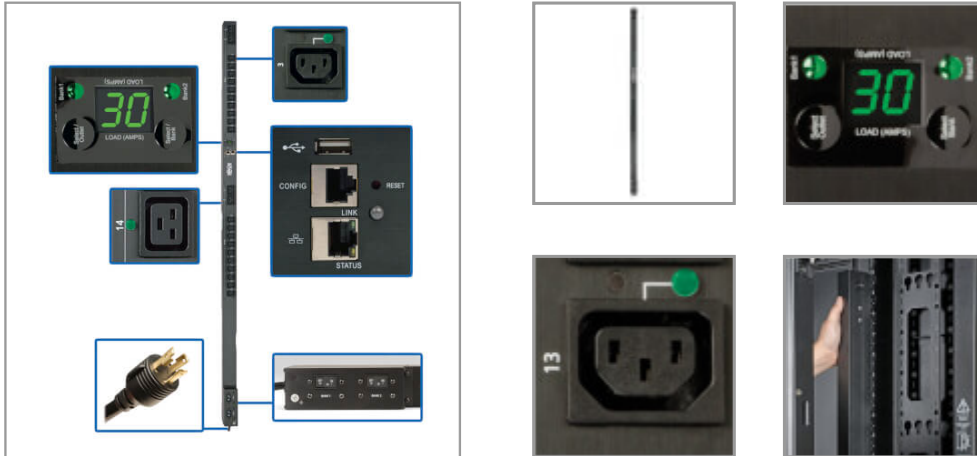


5.5kW Single-Phase Switched PDU, Outlet Monitoring, 208/230V Outlets (20 C13 & 4 C19), 0U, LX Interface, TAA

MODEL NUMBER: PDUMVR30HVNETHX



Efficient, cost-effective 5.5kW PDU distributes, monitors and manages single-phase power in an IT or industrial environment. Built-in Ethernet interface helps monitor load levels to prevent overloads that cause downtime.

Description

The PDUMVR30HVNETHX 5.5kW Single-Phase Switched PDU provides advanced network control and remote power monitoring with the ability to turn on, turn off, reboot or lock out power to each outlet. Recommended for any IT or industrial application, it features 24 switched outlets (20 C13 and 4 C19). LEDs indicate each outlet's on/off power status, and you can monitor each outlet's power consumption remotely or via digital display. A 10-ft. (3.05 m) cord with NEMA L6-30P plug connects the PDU to a compatible AC power source, generator or protected UPS.

The built-in Java-free HTML5-based LX Platform interface enables full remote access for power monitoring, configuration, control and email notifications via secure web browser, SNMP, telnet or SSH. It supports 10/100 Mbps auto-sensing for optimum communication with an Ethernet network. Optional EnviroSense2 modules (sold separately) provide a variety of environmental monitoring capabilities. Protocols supported include HTTP, HTTPS, SMTP, SNMPv1, SNMPv2c, SNMPv3, Telnet, SSH, CLI, FTP, DHCP and NTP.

A digital LED meter allows you to monitor each bank's load in real time to ensure the PDUMVR30HVNETHX is used at maximum capacity with no danger of overload. The PDU mounts in 0U of space in EIA-standard 19-inch racks using the included toolless mounting buttons or the included rack-mounting brackets. Use the included PDUMVROTATEBRKT kit to install the unit with outlets facing the rear for better airflow or equipment access.

Features

Distributes Network-Grade Single-Phase Power 5.5kW 208/230V 24A switched rack PDU (rPDU) with single-phase input/output Recommended for network applications requiring individual outlet control, load shedding and remote monitoring of critical network components NEMA L6-30P with 10-ft. (3.05 m) cord connects to compatible AC power source

24 Switched Outlets Distribute AC Power 20 C13 and 4 C19 outlets split into 2 separate load banks Outlets can be remotely controlled to power up, power down, reboot or lock out unresponsive devices Front-panel LEDs indicate outlets' power status Current monitoring provides 1% billing grade accuracy

Digital Load Meter Reports load levels for each bank, both banks combined and each outlet Supports IP-address self-ID Rotates 180° for easy reading at all angles

Highlights

- 5.5kW 208/230V 24A switched PDU
- 24 switched outlets—20 C13, 4 C19
- Pre-installed WEBCARDLX with latest version of PADM20 for IP-based Auto Probe feature
- Digital meter for load monitoring in real time
- Monitors power consumption of individual outlets

Package Includes

- PDUMVR30HVNETHX 5/5.5kW Single-Phase Switched PDU
- Configuration cable
- (20) C13 plug-lock inserts
- (4) C19 plug-lock inserts
- (2) 90° PDU rotation brackets
- Additional button mounts
- Owner's manual



Powering Business Worldwide



Outlet-Level Current Monitoring Monitors power consumption for each individual outlet remotely or via digital display Tracks current power usage trends per device or input cord

Advanced Network Monitoring Pre-installed WEBCARDLX with the latest version of PowerAlert Device Manager firmware (PADM20) provides enhanced remote management capabilities PADM20 and PowerAlert Element Manager (PAEM) form a powerful tool for expanding maintenance functions in large installations, including firmware update checks and backup and restoration of device configurations IP-based Auto Probe detects lost connectivity and restores service autonomously

Easy 0U Installation in EIA-Standard 19 in. Racks Mounts vertically using included toolless buttons or rack-mounting brackets Included PDUMVROTATEBRKT allows mounting with rear-facing outlets Plug-lock inserts prevent cables from becoming accidentally disconnected

TAA-Compliant Compliant with the Federal Trade Agreements Act (TAA) for GSA Schedule purchases

Specifications

OVERVIEW	
UPC Code	037332202840
PDU Type	Switched
INPUT	
Input Phase	Single-Phase
PDU Input Voltage	208; 230
Recommended Electrical Service	Single-phase 30A 208/230V service
Maximum Input Amps	24
Maximum Input Amps Details	Agency de-rated to 24A continuous
PDU Plug Type	NEMA L6-30P
Input Cord Length (ft.)	10
Input Cord Length (m)	3.05
OUTPUT	
Output Capacity Details	5.5kW (230V), 5kW (208V) total capacity / 30A max (Agency de-rated to 24A), 20A max per breaker outlet bank; 16A max per C19 outlet; 12A max per C13 outlet
Frequency Compatibility	50 / 60 Hz
Output Receptacles	(20) C13; (4) C19
Output Nominal Voltage	208/230V
Overload Protection	Two 20A breakers protect 12 outlets each
Customized Load Management Receptacles	Each outlet is individually controllable via remote interface
USER INTERFACE, ALERTS & CONTROLS	
Front Panel LCD Display	Digital display reports load level in amps for LOAD BANK 1 (Outlets 1-12), LOAD BANK 2 (Outlets 13-24), LOAD BANKS 1&2 COMBINED (Outlets 1-24) and each individual output receptacle; Digital display can also be used to scroll the configured IP address



Powering Business Worldwide



Front Panel LEDs	BANK 1 and BANK 2 LEDs verify which load bank the digital current display is reporting (Bank 1, Bank 2 or Banks 1&2 Combined); BANK 1 or BANK 2 LED will flash when the digital display is reporting output current for one of the outlets in that load bank; 24 additional LEDs, one near each output receptacle, will light continuously to verify power on/off status and flash to indicate that the digital display is reporting output current for just that individual receptacle. Network Link/Activity Status LED (Yellow), Network Speed LED (Green); LX Platform status LED (Green)
Switches	SELECT OUTLET and SELECT BANK switches advance the LCD screen and associated LED to display power consumption for individual output receptacles and output load banks; Press and hold the SELECT BANK button for 4 seconds to rotate the digital display 90 degrees for overhead power input; Press and hold the SELECT OUTLET button for 4 seconds to scroll the configured IP address. LX Platform Interface: Recessed reset switch for interface reboot and factory reset
Current Measurement Accuracy (Amps)	+/-1%
Voltage Measurement Accuracy (Volts)	+/-1%
Power Measurement Accuracy (Watts)	+/-1%
SURGE / NOISE SUPPRESSION	
Automatic Shut-Off	No
PHYSICAL	
Material of Construction	Metal
Form Factors Supported	0U vertical rackmount; includes rackmount brackets. Supports toolless mounting in button-mount compatible racks
PDU Form Factor	Vertical (0U)
Shipping Dimensions (hwd / in.)	5.40 x 6.80 x 76.10
Shipping Dimensions (hwd / cm)	13.72 x 17.27 x 193.29
Shipping Weight (lbs.)	16.50
Shipping Weight (kg)	7.48
Unit Dimensions (hwd / in.)	70.000 x 2.200 x 2.600
Unit Dimensions (hwd / cm)	178 x 5.6 x 6.6
Unit Weight (lbs.)	12
Unit Weight (kg)	5.44
ENVIRONMENTAL	
Operating Temperature Range	32° to 104°F (0° to 40°C)
Storage Temperature Range	-22° to 122°F (-30° to 50°C)
Relative Humidity	5% to 95% non-condensing
Operating Elevation	0-10000 ft. (0-3000 m)
COMMUNICATIONS	
PowerAlert Software	LX Platform Interface: PowerAlert Device Manager
Communications Cable	RJ45-to-DB9 configuration/console Access cable
Network Monitoring Port	RJ45 Network port, RJ45 Serial Config/Console Access port; USB A port supports a variety of Envirosense2 environmental and control modules. See Accessories>Management Hardware section for more information about these modules.



Powering Business Worldwide



SNMP Compatibility	Pre-installed LX platform interface provides remote monitoring via Java-free HTML5 web interface, telnet, SSH, CLI and SNMP management systems
Network Compatibility	10 Mbps; 100 Mbps (Fast Ethernet)
FEATURES & SPECIFICATIONS	
High Availability PDU Features	Auto Probe Monitoring and Reboot (included); Auto Load Shedding
STANDARDS & COMPLIANCE	
Product Certifications	NOM (Mexico); UL 60950-1
Product Compliance	RoHS; FCC Part 15 Class A (USA); Trade Agreements Act (TAA)
WARRANTY & SUPPORT	
Product Warranty Period (Worldwide)	2-year limited warranty

1000 Eaton Boulevard
Cleveland, OH 44122
United States
<https://tripplite.eaton.com>

© 2024 Eaton. All Rights Reserved.
Eaton is a registered trademark. All other trademarks
are the property of their respective owners.