



Features

- 37.5W-75W isolated output
- Efficiency to 84%
- 300KHz switching frequency
- 4:1 input range
- Regulated outputs
- Continuous short circuit protection
- Industry standard half-brick package
- Five-sided metal case



Model Number	Input Voltage	Output Voltage	Output Current	Input Current		Effic.	Case
				No Load	Full Load		
VHB75-Q48-S3R3	18-75 VDC	3.3VDC	15A	50mA	1320mA	78%	HB
VHB75-Q48-S5	18-75 VDC	5VDC	15A	50mA	1905mA	82%	HB
VHB75-Q48-S12	18-75 VDC	12VDC	6.25A	50mA	1860mA	84%	HB
VHB75-Q48-S15	18-75 VDC	15VDC	5A	50mA	1860mA	84%	HB
VHB75-Q48-S24	18-75 VDC	24VDC	3.12A	50mA	1860mA	84%	HB

Input

Input Voltage Range	48V:	18-75V
Under Voltage Lockout	48Vin:	power up 17V power down 16V
ON/OFF Control		see notes 3&4
Input Filter		PI Type

Output

Voltage Accuracy		±1% max.
Transient Response: 25% Step Load Change		<500μ sec.
External Trim Adj. Range		±10%
Ripple & Noise	3.3V, 5V	40mV RMS., max 100mV pk-pk., max
	12V & 15V	60mV RMS., max 150mV pk-pk., max
Temperature Coefficient		±0.03%/°C
Short Circuit Protection		Continuous
Line Regulation ¹		±0.2% max
Load Regulation ²		±0.2% max
Over Voltage Protection trip Range, % Vo nom.		115-140%
Current Limit		110%-160% Nominal Output

General Specifications

Efficiency		see table
Isolation Voltage	Input/Output	1500VDC min.
	Input/Case	1500VDC min.
	Output/Case	1500VDC min.
Isolation Resistance		10 ⁷ Ohm min.
Switching Frequency		300KHz, Typ
Operating Case Temperature		-40°C to +100°C
Storage Temperature		-55°C to +105°C
Thermal Shutdown, Case Temp.		100°C Typ.
Dimensions		2.28x2.40x0.50 inches (57.9x61.0x12.7mm)
Case Material		aluminum

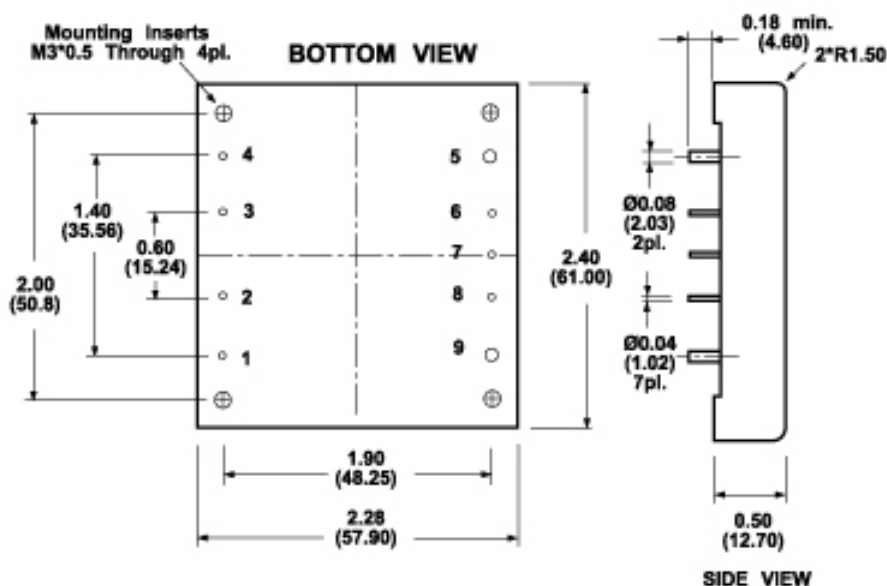
NOTES:

1. Measured from high line to low line
2. Measured from full load to zero load
3. On/Off Control: Positive logic default. Referenced to -Vin. Open collector.
Module ON...open circuit
Module OFF...<0.8Vdc
4. For negative logic On/Off control, add suffix "N" to the model number

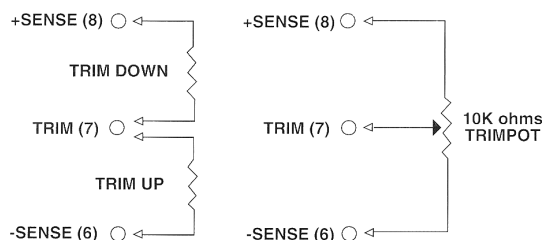
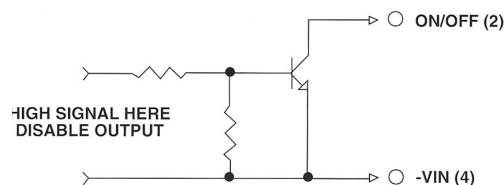
Case HB

All Dimensions in inches(mm)

Tolerances	Inches	.XX±.02	.XXX±.010	Pin ±0.02
	Millimeters	.X±.5	.XX±.25	±0.5


PIN CONNECTION

Pin	Function
1.	+Vin
2.	ON/OFF
3.	CASE
4.	-Vin
5.	-Vout
6.	-Sense
7.	Trim
8.	+Sense
9.	+Vout

External Output Trim

Remote ON/OFF Control


V-Infinity reserves the right to make changes to its products or to discontinue any product or service without notice, and to advise customers to verify the most up-to-date product information before placing orders. V-Infinity assumes no liability or responsibility for customer's applications using V-Infinity products other than repair or replacing (at V-I's option) V-Infinity products not meeting V-I's published specifications. Nothing will be covered outside of standard product warranty.