

saGeOn® sent r Y POwer sYst eMs



The Sageon Sentry Power System is intelligent power. Sageon Sentry, the latest development in the Sageon family of power systems, is simple to operate yet genius in delivering enhanced, built-in intelligence to minimize manual adjustments and measurements, while providing information to manage power.

Capable of delivering up to 1,300 Amps of power for +24/-48 volt systems, including up to 60 distribution breakers, all in a single 7 ft bay, the Sageon Sentry accommodates your changing power needs. The Sageon Sentry's basic components of smart rectifiers, controller and flexible distribution enable these systems to be easily sized.

Available in multiple rack heights, the Sageon family of power system products is designed to fit in virtually any application that demands stable, reliable, and easily expandable DC power.

Features and Benefits

High density

Compact design with rectifiers at 9 watts per cubic inch, minimizing floor space necessary for installation

Front accessible

Installation, repairs, and maintenance are made easier, saving time and money

Modular design

Expandable, scalable, and flexible for changing power needs

Remote access

Remotely monitor and control the complete power systems, reducing trips to the site

Battery testing

Automatic or on-demand battery testing, insuring batteries are functioning properly

Sageon Sentry is scalable, flexible, accessible and configurable. The power system you buy from C&D Technologies today will support your needs as you grow and expand. The Sageon Sentry Power System's distribution is scalable and upgradeable, enabling build out in five rack unit increments (5RU). Being able to upgrade and add-on as needed saves on infrastructure build-out cost, and doing this while the system is hot means you won't have to bring in an alternative power source during the upgrade.

The Sageon Sentry Power Systems accommodate AM1 and GJ1 breakers or TPS fuses - mix and match these components into almost any combination. One distribution section (5RU) is capable of 20 AM1 positions, and Sageon Sentry accommodates up to a total of three distribution sections. The Sageon Sentry's unique design includes an internal ground return bus, individual landings, and an option for an individual ground return landing.

100% front access. Regardless of what needs to be done to Sageon Sentry, whether maintenance or expansion, the front accessibility makes it easy..

MONITORING & CONTROL

Sageon is control. The Sageon Sentry Power System has a single point of adjustment for multiple bays of rectifiers, controlling up to 225 rectifiers and four strings of batteries. The controller contains a large easy to read, two-line by 16-character backlit vacuum florescent display, and allows users to view and adjust plant operating parameters and alarms. With Sageon Sentry, monitoring can be done via a local computer interface and remotely by modem or Ethernet, eliminating the need to take manual measurements. Sageon also supports SNMP communication. (Refer to 10-713 for further specification information.)

BATTERY STRINGS

Sageon Sentry is a complete system. The Sageon Power System comes standard with internal battery string termination for multiple battery strings and accommodates C&D Technologies' batteries and those of other manufacturers, to enable build out of current systems integrated with Sageon's exceptional features. Safe, periodic battery discharge testing provides early detection of a potential battery problem, resulting in increased uptime. C&D incorporated automated user definable testing, monitoring for up to four strings, and load testing into Sageon to predict and prevent battery failure.

RECTIFIERS

Sageon is reliability. Every piece of the Sageon Sentry Power System was designed with intelligence and the rectifiers are no exception. These units are self-protecting to avoid thermal overload and are auto load sharing with self-diagnostics reported through the controller. Should the controller happen to fail, Sageon Sentry's rectifiers operate without it to ensure continuous reliability.

The Sageon Sentry Power System was designed with expandability in mind. Sageon's unique frame does not have power shelves. Each rectifier attaches directly into the system via rectifier mounting brackets to allow expansion without the cost of purchasing additional rectifier shelves. (Refer to 10-711 and 10-712 for further specification information.)

CABINET

Sageon is strength. The standard 24 in (610 mm) cabinet supports installation of user equipment along with Sageon Sentry Power System.

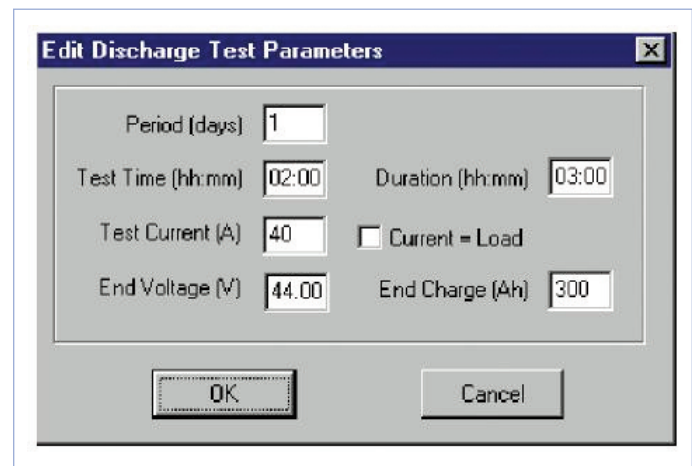
The Sageon Sentry Power System performs in adverse conditions to ensure system dependability.

Complete with front accessibility and locking front door, the Sageon Power System's performance will not be compromised.

BATTERY TESTING

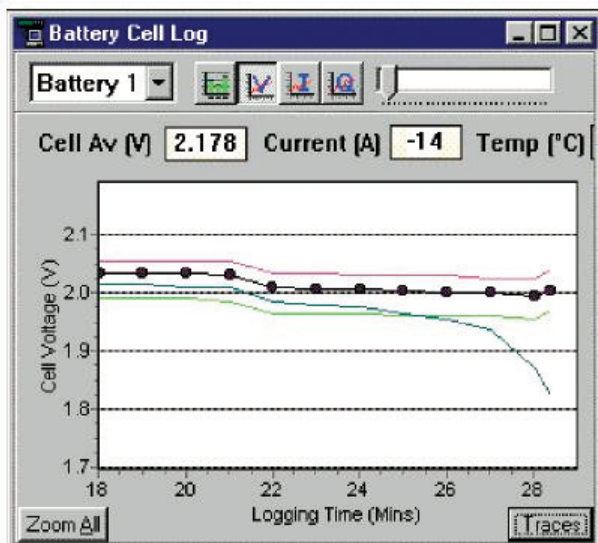
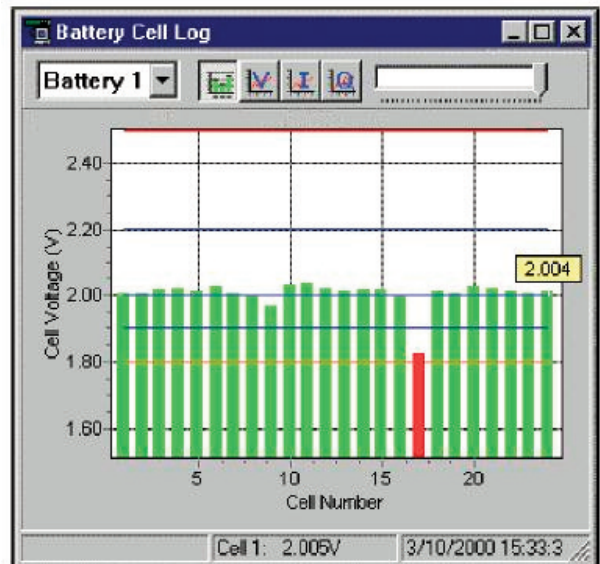
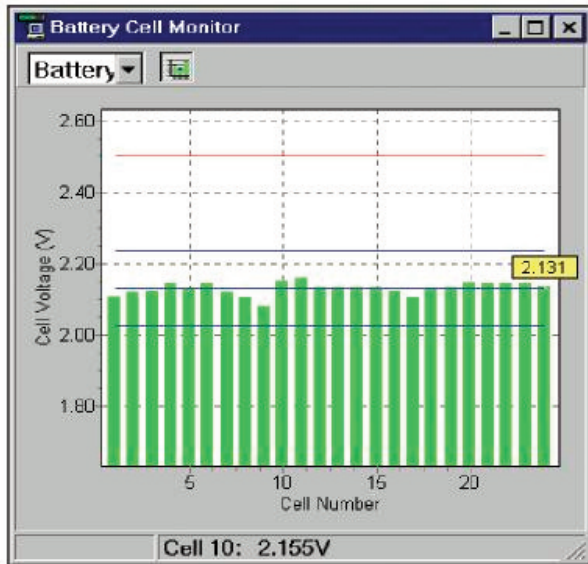
The Sageon Sentry Power System incorporates nearly 100 years of C&D battery knowledge. This expertise is embedded in the SageView™ software and is only a keystroke away. This added insight lets the user quickly gauge the overall health of the power system.

Battery discharge tests can be run with no external equipment and no disruption to the wiring or configuration of the power system, resulting in greater power security at a reduced cost.



OPTIONAL BATTERY MONITORING

The Sageon Sentry Power System monitors and records battery information at the individual cell level. The Sageon Sentry Power Systems provide access to this data locally and remotely allowing operators and technicians to easily troubleshoot and solve problems. The availability of both real time and historical data facilitates rapid assessment of power availability and reliability. With the individual cell data, trouble spots can be isolated to individual cells resulting in faster change outs and increased up time.



Battery Cell Monitor	
Battery	
Current	0 A
Cell 1 Volts	2.110 -1%
Cell 2 Volts	2.120 -1%
Cell 3 Volts	2.125 +0%
Cell 4 Volts	2.145 +1%
Cell 5 Volts	2.130 +0%
Cell 6 Volts	2.145 +1%
Cell 7 Volts	2.120 -1%
Cell 8 Volts	2.105 -1%
Cell 9 Volts	2.075 -3%
Cell 10 Volts	2.155 +1%
Cell 11 Volts	2.155 +1%
Cell 12 Volts	2.135 +0%
Cell 13 Volts	2.135 +0%
Cell 14 Volts	2.135 +0%

Specifications

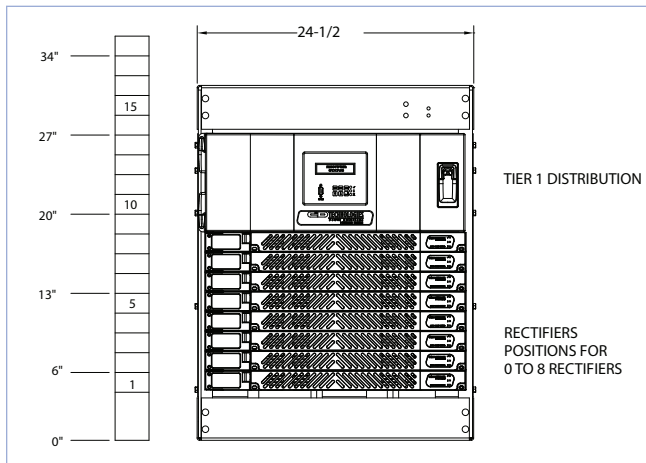
Environmental Specifications

normal Operating temperature	-13F (-25C) to 122F (50C)
extended Operating temperature	-13F (-25C) to 158F (70C)
storage temperature	-40F (-40C) to 158F (70C)
Humidity	0 to 95% non-condensing
altitude	10,000 ft (3,000 m)
Heat dissipation	26,614 BTU/Hr. maximum at 1,300A, 54VDC
cooling	Forced air, front to back, auto-regulating
acoustic noise	<45db (80% load, 25degC); <55db (100% load, 50degC) (A weighted)

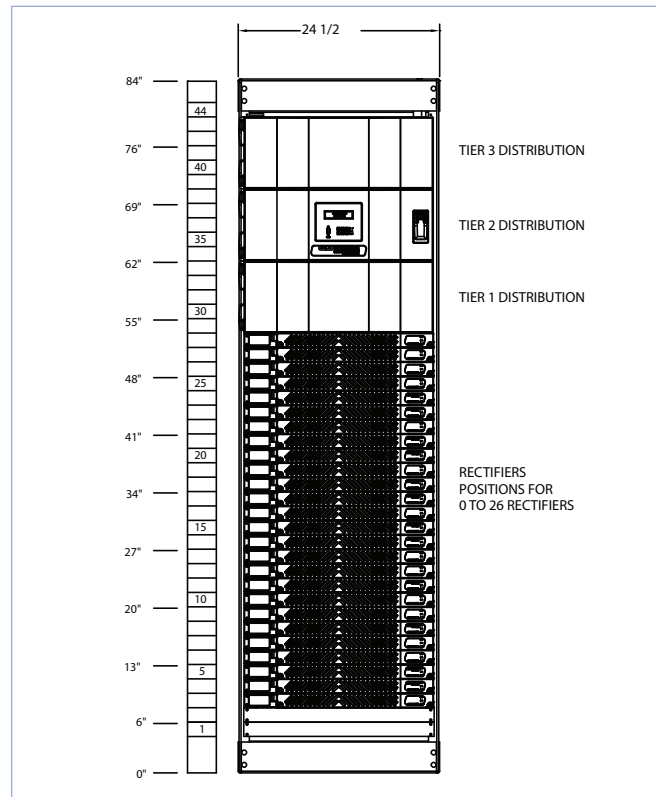
Physical Specifications

	3 ft (914 mm)	7 ft (2134 mm)
Height	34 in (864 mm)	84 in (2134 mm)
width	24 in (610 mm)	24 in (610 mm)
depth	24 in (610 mm)	24 in (610 mm)
weight	350 lb (159 kg)	575 lb (261 kg)

3 Ft saGeOn sent r Y P OWer s Yst e M



7 Ft saGeOn sent r Y P OWer s Yst e M



C&D TECHNOLOGIES, INC.

1400 Union Meeting Road
P.O. Box 3053 • Blue Bell, PA 19422-0858
(215) 619-2700 • Fax (215) 619-7899
(800) 543-8630 • (423) 949-4135
customersvc@cdtechno.com
dunlapcs@cdtechno.com
www.cdtechno.com

Any data, descriptions or specifications presented herein are subject to revision by C&D Technologies, Inc. without notice. While such information is believed to be accurate as indicated herein, C&D Technologies, Inc. makes no warranty and hereby disclaims all warranties, express or implied, with regard to the accuracy or completeness of such information. Further, because the product(s) featured herein may be used under conditions beyond its control, C&D Technologies, Inc. hereby disclaims all warranties, either express or implied, concerning the fitness or suitability of such product(s) for any particular use or in any specific application or arising from any course of dealing or usage of trade. The user is solely responsible for determining the suitability of the product(s) featured herein for user's intended purpose and in user's specific application.

Copyright 2011 C&D TECHNOLOGIES, INC. Printed in U.S.A. 10-1029 0611/CD