

Product: [GDM21FB-V24-10D](#)

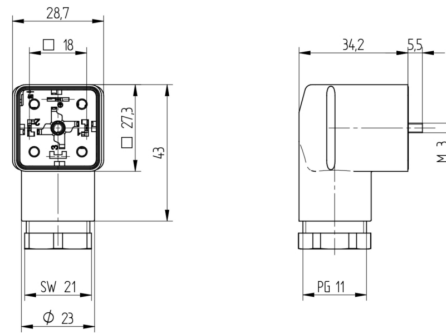
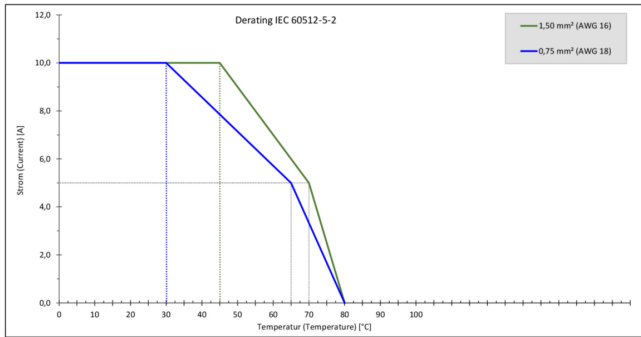


GDM Standard DIN Standard Field Attachable Connector: Form A, 3-pin (2+1PE; PE across cable outlet), transparent housing, screw type, PG11; with varistor and yellow LED, 24 V AC/DC, 10 A

Product Description

GDM Standard DIN Standard Field Attachable Connector: Form A, 3-pin (2+1PE; PE across cable outlet), transparent housing, screw type, PG11; with varistor and yellow LED, 24 V AC/DC, 10 A

Technical Drawing



Montageanleitung Ventilsteckverbinder



Achtung!
Steckverbinder nicht unter Last oder Spannung stecken / werten!

Bei hohen oder niedrigen Temperaturen ist die Steckverbinder-Verwendung zu vermeiden. Bei hohen Temperaturen (über 70°C) oder niedrigen Temperaturen (unter -20°C) kann das Material des Steckverbinders beschädigt werden. Die Verwendung des Steckverbinders ist nur bei den angegebenen Temperaturbereichen zulässig.

Die Steckverbinder sind für den Einsatz in der Industrie vorgesehen. Sie sind nicht für den Einsatz in der Landwirtschaft oder in anderen Bereichen mit hohem Verschleiß geeignet.

Die Steckverbinder sind für den Einsatz in der Industrie vorgesehen. Sie sind nicht für den Einsatz in der Landwirtschaft oder in anderen Bereichen mit hohem Verschleiß geeignet.

Technische Merkmale

Der Steckverbinder ist ein einseitig wirkendes, einpoliges Steckverbinder-System, das für die Verbindung von Kabeln mit einem Querschnitt von 6,0 bis 8,0 mm² bis 30,0 mm² geeignet ist. Der Steckverbinder ist für den Einsatz in der Industrie vorgesehen. Er ist nicht für den Einsatz in der Landwirtschaft oder in anderen Bereichen mit hohem Verschleiß geeignet.

Montage

1. Leuchtverschraubung, Kabelkennzeichnung / Anzeigensystem

2. Steckverbinder-Untergruppe / Anzeigensystem / Einbauelement

3. Steckverbinder-Untergruppe / Anzeigensystem / Einbauelement

4. Leuchtverschraubung, Kabelkennzeichnung / Anzeigensystem

5. Steckverbinder-Untergruppe / Anzeigensystem / Einbauelement

Leitungsverschraubung, Kabelkennzeichnung / Anzeigensystem

GDM-Modell	Stk. L5	6,0 – 8,0 mm	30,0 mm
GDM-Modell	75, 9	6,0 – 8,0 mm <td>30,0 mm</td>	30,0 mm
GDM-Modell	14	6,0 – 8,0 mm <td>30,0 mm</td>	30,0 mm
GDM-Modell	75, 11	6,0 – 8,0 mm <td>30,0 mm</td>	30,0 mm
GDM-Modell	14	6,0 – 8,0 mm <td>30,0 mm</td>	30,0 mm
GDM-Modell	75, 11	6,0 – 8,0 mm <td>30,0 mm</td>	30,0 mm
GDM-Modell	14	6,0 – 8,0 mm <td>30,0 mm</td>	30,0 mm

Steckverbinder-Untergruppe / Anzeigensystem / Einbauelement

AWG	40 mm	50 / 500 V AC/DC
AWG 22	40 mm <td>50 / 500 V AC/DC</td>	50 / 500 V AC/DC
AWG 18	40 mm <td>50 / 500 V AC/DC</td>	50 / 500 V AC/DC
AWG 16	40 mm <td>50 / 500 V AC/DC</td>	50 / 500 V AC/DC
AWG 14	40 mm <td>50 / 500 V AC/DC</td>	50 / 500 V AC/DC

Leuchtverschraubung, Kabelkennzeichnung / Anzeigensystem

M	40 mm	50 / 500 V AC/DC
M 40-1	40 mm <td>50 / 500 V AC/DC</td>	50 / 500 V AC/DC
M 40-2	40 mm <td>50 / 500 V AC/DC</td>	50 / 500 V AC/DC
M 40-3	40 mm <td>50 / 500 V AC/DC</td>	50 / 500 V AC/DC
M 40-4	40 mm <td>50 / 500 V AC/DC</td>	50 / 500 V AC/DC

Steckverbinder-Untergruppe / Anzeigensystem / Einbauelement

M	40 mm	50 / 500 V AC/DC
M 40-1	40 mm <td>50 / 500 V AC/DC</td>	50 / 500 V AC/DC
M 40-2	40 mm <td>50 / 500 V AC/DC</td>	50 / 500 V AC/DC
M 40-3	40 mm <td>50 / 500 V AC/DC</td>	50 / 500 V AC/DC
M 40-4	40 mm <td>50 / 500 V AC/DC</td>	50 / 500 V AC/DC

Leitungsverschraubung, Kabelkennzeichnung / Anzeigensystem

GDM-Modell	Stk. L5	6,0 – 8,0 mm	30,0 mm
GDM-Modell	75, 9	6,0 – 8,0 mm <td>30,0 mm </td>	30,0 mm
GDM-Modell	14	6,0 – 8,0 mm <td>30,0 mm </td>	30,0 mm
GDM-Modell	75, 11	6,0 – 8,0 mm <td>30,0 mm </td>	30,0 mm
GDM-Modell	14	6,0 – 8,0 mm <td>30,0 mm </td>	30,0 mm
GDM-Modell	75, 11	6,0 – 8,0 mm <td>30,0 mm </td>	30,0 mm
GDM-Modell	14	6,0 – 8,0 mm <td>30,0 mm </td>	30,0 mm

Steckverbinder-Untergruppe / Anzeigensystem / Einbauelement

AWG	40 mm	50 / 500 V AC/DC
AWG 22	40 mm <td>50 / 500 V AC/DC</td>	50 / 500 V AC/DC
AWG 18	40 mm <td>50 / 500 V AC/DC</td>	50 / 500 V AC/DC
AWG 16	40 mm <td>50 / 500 V AC/DC</td>	50 / 500 V AC/DC
AWG 14	40 mm <td>50 / 500 V AC/DC</td>	50 / 500 V AC/DC

Leuchtverschraubung, Kabelkennzeichnung / Anzeigensystem

M	40 mm	50 / 500 V AC/DC
M 40-1	40 mm <td>50 / 500 V AC/DC</td>	50 / 500 V AC/DC
M 40-2	40 mm <td>50 / 500 V AC/DC</td>	50 / 500 V AC/DC
M 40-3	40 mm <td>50 / 500 V AC/DC</td>	50 / 500 V AC/DC
M 40-4	40 mm <td>50 / 500 V AC/DC</td>	50 / 500 V AC/DC

Steckverbinder-Untergruppe / Anzeigensystem / Einbauelement

M	40 mm	50 / 500 V AC/DC
M 40-1	40 mm <td>50 / 500 V AC/DC</td>	50 / 500 V AC/DC
M 40-2	40 mm <td>50 / 500 V AC/DC</td>	50 / 500 V AC/DC
M 40-3	40 mm <td>50 / 500 V AC/DC</td>	50 / 500 V AC/DC
M 40-4	40 mm <td>50 / 500 V AC/DC</td>	50 / 500 V AC/DC

Leitungsverschraubung, Kabelkennzeichnung / Anzeigensystem

GDM-Modell	Stk. L5	6,0 – 8,0 mm	30,0 mm
GDM-Modell	75, 9	6,0 – 8,0 mm <td>30,0 mm </td>	30,0 mm
GDM-Modell	14	6,0 – 8,0 mm <td>30,0 mm </td>	30,0 mm
GDM-Modell	75, 11	6,0 – 8,0 mm <td>30,0 mm </td>	30,0 mm
GDM-Modell	14	6,0 – 8,0 mm <td>30,0 mm </td>	30,0 mm
GDM-Modell	75, 11	6,0 – 8,0 mm <td>30,0 mm </td>	30,0 mm
GDM-Modell	14	6,0 – 8,0 mm <td>30,0 mm </td>	30,0 mm

Steckverbinder-Untergruppe / Anzeigensystem / Einbauelement

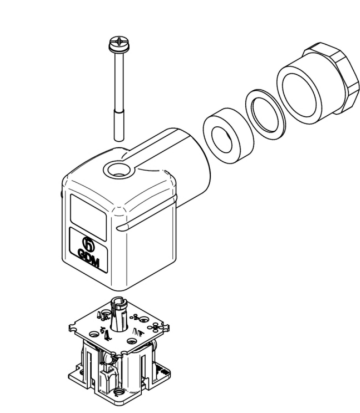
AWG	40 mm	50 / 500 V AC/DC
AWG 22	40 mm <td>50 / 500 V AC/DC</td>	50 / 500 V AC/DC
AWG 18	40 mm <td>50 / 500 V AC/DC</td>	50 / 500 V AC/DC
AWG 16	40 mm <td>50 / 500 V AC/DC</td>	50 / 500 V AC/DC
AWG 14	40 mm <td>50 / 500 V AC/DC</td>	50 / 500 V AC/DC

Leuchtverschraubung, Kabelkennzeichnung / Anzeigensystem

M	40 mm	50 / 500 V AC/DC
M 40-1	40 mm <td>50 / 500 V AC/DC</td>	50 / 500 V AC/DC
M 40-2	40 mm <td>50 / 500 V AC/DC</td>	50 / 500 V AC/DC
M 40-3	40 mm <td>50 / 500 V AC/DC</td>	50 / 500 V AC/DC
M 40-4	40 mm <td>50 / 500 V AC/DC</td>	50 / 500 V AC/DC

Steckverbinder-Untergruppe / Anzeigensystem / Einbauelement

M	40 mm	50 / 500 V AC/DC
M 40-1	40 mm <td>50 / 500 V AC/DC</td>	50 / 500 V AC/DC
M 40-2	40 mm <td>50 / 500 V AC/DC</td>	50 / 500 V AC/DC
M 40-3	40 mm <td>50 / 500 V AC/DC</td>	50 / 500 V AC/DC
M 40-4	40 mm <td>50 / 500 V AC/DC</td>	50 / 500 V AC/DC



Leitungsverschraubung, Kabelkennzeichnung / Anzeigensystem

GDM-Modell	Stk. L5	6,0 – 8,0 mm	30,0 mm
GDM-Modell	75, 9	6,0 – 8,0 mm <td>30,0 mm </td>	30,0 mm
GDM-Modell	14	6,0 – 8,0 mm <td>30,0 mm </td>	30,0 mm
GDM-Modell	75, 11	6,0 – 8,0 mm <td>30,0 mm </td>	30,0 mm
GDM-Modell	14	6,0 – 8,0 mm <td>30,0 mm </td>	30,0 mm
GDM-Modell	75, 11	6,0 – 8,0 mm <td>30,0 mm </td>	30,0 mm
GDM-Modell	14	6,0 – 8,0 mm <td>30,0 mm </td>	30,0 mm

Steckverbinder-Untergruppe / Anzeigensystem / Einbauelement

AWG	40 mm	50 / 500 V AC/DC
AWG 22	40 mm <td>50 / 500 V AC/DC</td>	50 / 500 V AC/DC
AWG 18	40 mm <td>50 / 500 V AC/DC</td>	50 / 500 V AC/DC
AWG 16	40 mm <td>50 / 500 V AC/DC</td>	50 / 500 V AC/DC
AWG 14	40 mm <td>50 / 500 V AC/DC</td>	50 / 500 V AC/DC

Leuchtverschraubung, Kabelkennzeichnung / Anzeigensystem

M	40 mm	50 / 500 V AC/DC
M 40-1	40 mm <td>50 / 500 V AC/DC</td>	50 / 500 V AC/DC
M 40-2	40 mm <td>50 / 500 V AC/DC</td>	50 / 500 V AC/DC
M 40-3	40 mm <td>50 / 500 V AC/DC</td>	50 / 500 V AC/DC
M 40-4	40 mm <td>50 / 500 V AC/DC</td>	50 / 500 V AC/DC

Steckverbinder-Untergruppe / Anzeigensystem / Einbauelement

M	40 mm	50 / 500 V AC/DC
M 40-1	40 mm <td>50 / 500 V AC/DC</td>	50 / 500 V AC/DC
M 40-2	40 mm <td>50 / 500 V AC/DC</td>	50 / 500 V AC/DC
M 40-3	40 mm <td>50 / 500 V AC/DC</td>	50 / 500 V AC/DC
M 40-4	40 mm <td>50 / 500 V AC/DC</td>	50 / 500 V AC/DC

Leitungsverschraubung, Kabelkennzeichnung / Anzeigensystem

GDM-Modell	Stk. L5	6,0 – 8,0 mm	30,0 mm
GDM-Modell	75, 9	6,0 – 8,0 mm <td>30,0 mm </td>	30,0 mm
GDM-Modell	14	6,0 – 8,0 mm <td>30,0 mm </td>	30,0 mm
GDM-Modell	75, 11	6,0 – 8,0 mm <td>30,0 mm </td>	30,0 mm
GDM-Modell	14	6,0 – 8,0 mm <td>30,0 mm </td>	30,0 mm
GDM-Modell	75, 11	6,0 – 8,0 mm <td>30,0 mm </td>	30,0 mm
GDM-Modell	14	6,0 – 8,0 mm <td>30,0 mm </td>	30,0 mm

Steckverbinder-Untergruppe / Anzeigensystem / Einbauelement

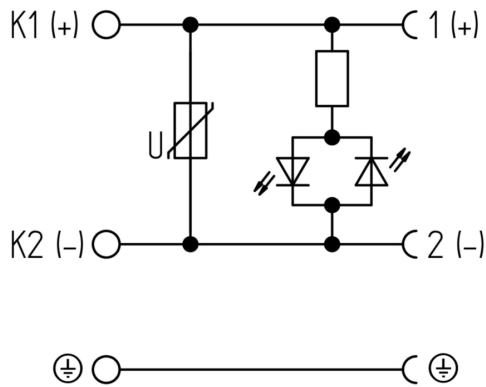
AWG	40 mm	50 / 500 V AC/DC
AWG 22	40 mm <td>50 / 500 V AC/DC</td>	50 / 500 V AC/DC
AWG 18	40 mm <td>50 / 500 V AC/DC</td>	50 / 500 V AC/DC
AWG 16	40 mm <td>50 / 500 V AC/DC</td>	50 / 500 V AC/DC
AWG 14	40 mm <td>50 / 500 V AC/DC</td>	50 / 500 V AC/DC

Leuchtverschraubung, Kabelkennzeichnung / Anzeigensystem

M	40 mm	50 / 500 V AC/DC
M 40-1	40 mm <td>50 / 500 V AC/DC</td>	50 / 500 V AC/DC
M 40-2	40 mm <td>50 / 500 V AC/DC</td>	50 / 500 V AC/DC
M 40-3	40 mm <td>50 / 500 V AC/DC</td>	50 / 500 V AC/DC
M 40-4	40 mm <td>50 / 500 V AC/DC</td>	50 / 500 V AC/DC

Steckverbinder-Untergruppe / Anzeigensystem / Einbauelement

M	40 mm	50 / 500 V AC/DC
M 40-1	40 mm <td>50 / 500 V AC/DC</td>	50 / 500 V AC/DC
M 40-2	40 mm <td>50 / 500 V AC/DC</td>	50 / 500 V AC/DC
M 40-3	40 mm <td>50 / 500 V AC/DC</td>	50 / 500 V AC/DC
M 40-4	40 mm <td>50 / 500 V AC/DC</td>	50 / 500 V AC/DC



Technical Specifications

Technical Data

Product Family:	Valve Connectors
Product Sub Family:	GDM Standard
Brand:	Hirschmann
Connector Type:	Field attachable
Type of Contact / Gender:	Female
Connector Design:	Angled
Number of Pins:	2+PE (PE across cable outlet)
Coding:	A
Shielding:	Unshielded
Attachment Type:	Central Screw
Replacement for:	ID: 932521002 Name: GDML 2011 LED 24 VR schwarz (Yellow LED instead of Red LED)
Rated Impulse Voltage:	4.0 kV (PCBA 2.0 kV)
Operating Voltage:	24 V AC/DC
Rated Current*:	10 A
Contact Resistance:	≤ 10 mOhm
Insulation Resistance:	> 10 ⁹ Ohm
Mating Cycles:	≤ 50
Type of Connection:	Screw
Cable Gland:	PG11
Conductor Cross Section:	0.25 - 1.5 mm²
Suitable Cables:	Ø 4.5 - 11 mm
Ambient Temperature (Operation)*:	-25°C to +80°C
Protection Degree / IP Rating**:	IP65
Design Standard:	DIN EN 175301-803-A, ISO 4400
Pollution Degree:	3 acc. to DIN EN 60664-1 (VDE 0110-1)
Clearance / Creepage Distance:	DIN EN 60664-1 (2008/01); VDE 0110-1
Overvoltage Category:	III acc. to DIN EN 60664-1 (VDE 0110-1)

Materials

Contact Base Material:	CuZn
Contact Plating:	Cu/Sn
Contact Bearer Material:	PA GF
Contact Bearer Color:	black
Flammability Class (Contact Bearer):	UL 94 HB
Housing Material:	PA GF
Housing Color:	Translucent
Flammability Class (Housing):	UL 94 HB
Cable Gland Material:	PA GF
Cable Gland Gasket:	NBR

Cable Gland Color:	Black
Attachment Material:	Steel, Philips combi slot
Gasket Material:	Sold separately

Protection Circuitry

Function Indicator:	Yellow LED
Protective Circuit:	Varistor

Additional Technical Data

Fastening Torque (Contact Screw):	M3: (25-30) Ncm
Fastening Torque (Cable Gland):	(150-200) Ncm
Fastening Torque (Attachment):	(50-60) Ncm

Approvals

VDE:	yes
SEV:	yes

Safety & Environmental Compliance

RoHS Compliant:	yes
-----------------	-----

Notes

Note Derating:	Notice derating
Protection Degree / IP Rating Note:	** only if mounted and locked in combination with Hirschmann / Lumberg Automation connector.
Note:	Do not connect or disconnect under load.

Variants

Item #	Item Description	Replacement For
934888148	GDM21FB-V24-10D	ID: 932521002 Name: GDML 2011 LED 24 VR schwarz (Yellow LED instead of Red LED)

© 2023 Belden, Inc

All Rights Reserved.

Although Belden makes every reasonable effort to ensure their accuracy at the time of this publication, information and specifications described here in are subject to error or omission and to change without notice, and the listing of such information and specifications does not ensure product availability.

Belden provides the information and specifications herein on an "ASIS" basis, with no representations or warranties, whether express, statutory or implied. In no event will Belden be liable for any damages (including consequential, indirect, incidental, special, punitive, or exemplary damages) whatsoever, even if Belden has been advised of the possibility of such damages, whether in an action under contract, negligence or any other theory, arising out of or in connection with the use, or inability to use, the information or specifications described herein.

All sales of Belden products are subject to Belden's standard terms and conditions of sale.

Belden believes this product to be in compliance with all applicable environmental programs as listed in the data sheet. The information provided is correct to the best of Belden's knowledge, information and belief at the date of its publication. This information is designed only as a general guide for the safe handling, storage, and any other operation of the product itself or the one that it becomes a part of. The Product Disclosure is not to be considered a warranty or quality specification. Regulatory information is for guidance purposes only. Product users are responsible for determining the applicability of legislation and regulations based on their individual usage of the product.