

daA4200-30mci (S-Mount) - Basler dart

The Basler daA4200-30mci (S-Mount) BCON for MIPI camera module with the ON Semiconductor AR1335 CMOS sensor delivers 30 frames per second at 13 MP resolution. This model comes with a S-mount.



Number

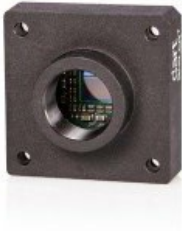
1

+
-

Buy now or add to request cart

🛒

Add to watch list ☆



Specifications



General Information

Design-In Sample:	08/2019
Order Number	108011

Sensor

Sensor Vendor	ON Semiconductor
Sensor	AR1335
Shutter	Rolling Shutter
Max. Image Circle	1/3"
Sensor Type	CMOS
Resolution (HxV)	4208 px x 3120 px
Resolution	13 MP
Pixel Size (H x V)	1.1 μm x 1.1 μm
Frame Rate	30 fps
Mono/Color	Color

Camera Data

Interface	BCON for MIPI
Pixel Bit Depth	10 bits
Synchronization	<div>■ free-run</div> <div>■ software trigger</div>
Image Processing	In-Camera Processing
Exposure Control	<div>■ programmable via the camera API</div> <div>■ automatic</div> <div>■ manual</div>
Digital Input	2

Camera Data

Digital Output	2
Power Requirements	■ 5V DC (via BCON for MIPI interface)
Power Consumption (typical)	0.6 W

Housing

Housing Type	Board Level
Housing Size (L x W x H)	27 mm x 27 mm x 5.3 mm
Lens Mount	■ S-mount
Weight (typical)	5g

Conformity

Conformity	<div><div>■</div>RoHS</div> <div><div>■</div>CE</div> <div><div>■</div>FCC</div> <div><div>■</div>GenICam</div> <div><div>■</div>MIPI CSI-2</div> <div><div>■</div>UL</div> <div><div>■</div>KC</div>
------------	---

 share

 tweet


 share

 mail



eNewsletter

Regular updates on events and product innovations:

 **Subscribe**

Basler on the social networks

Keep in touch with us via the social networks:

