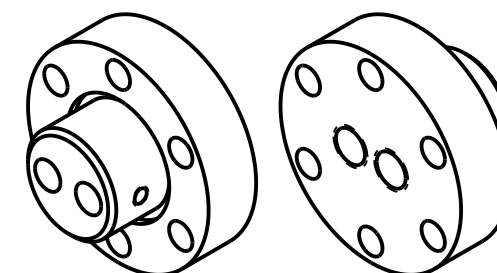
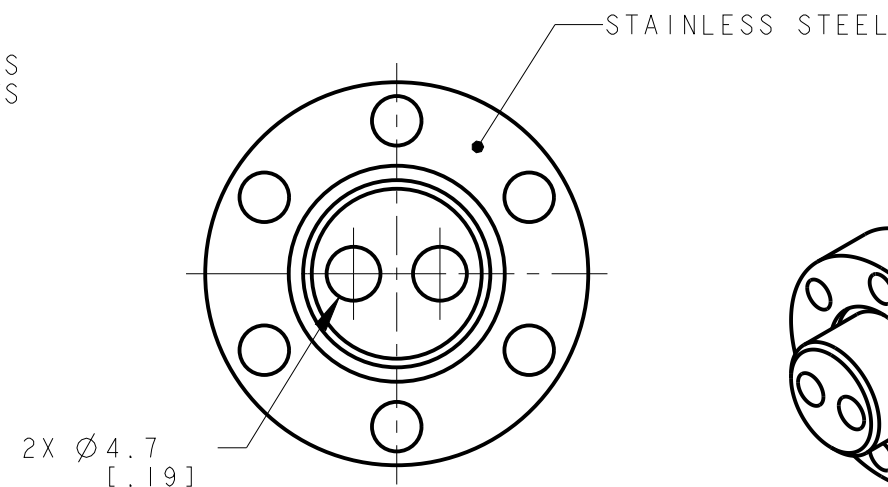
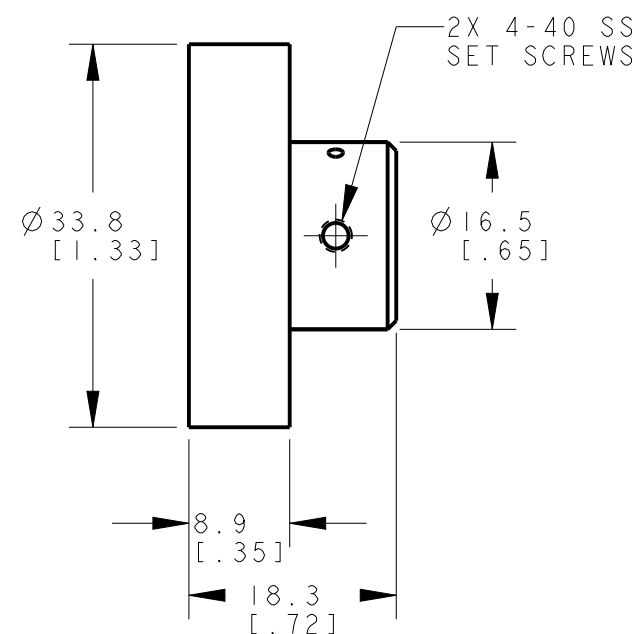
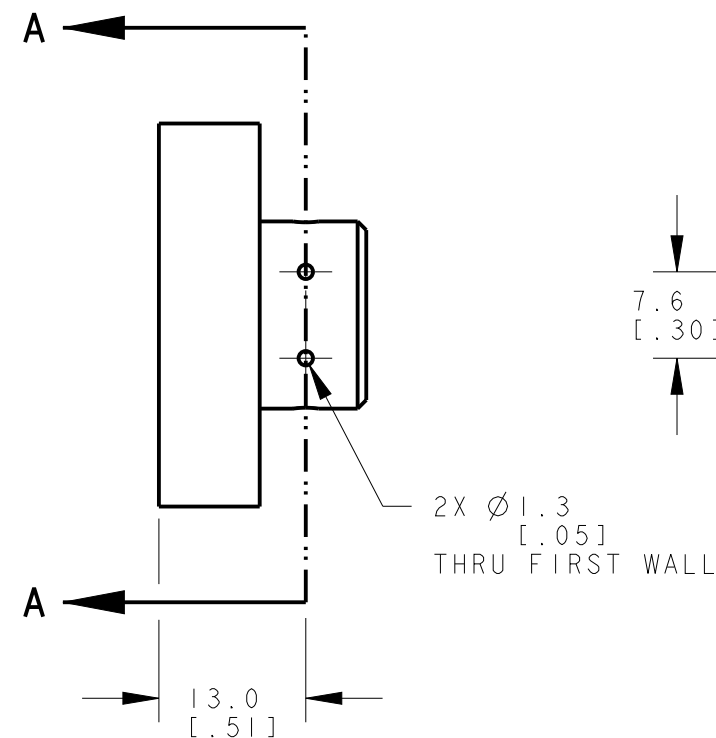
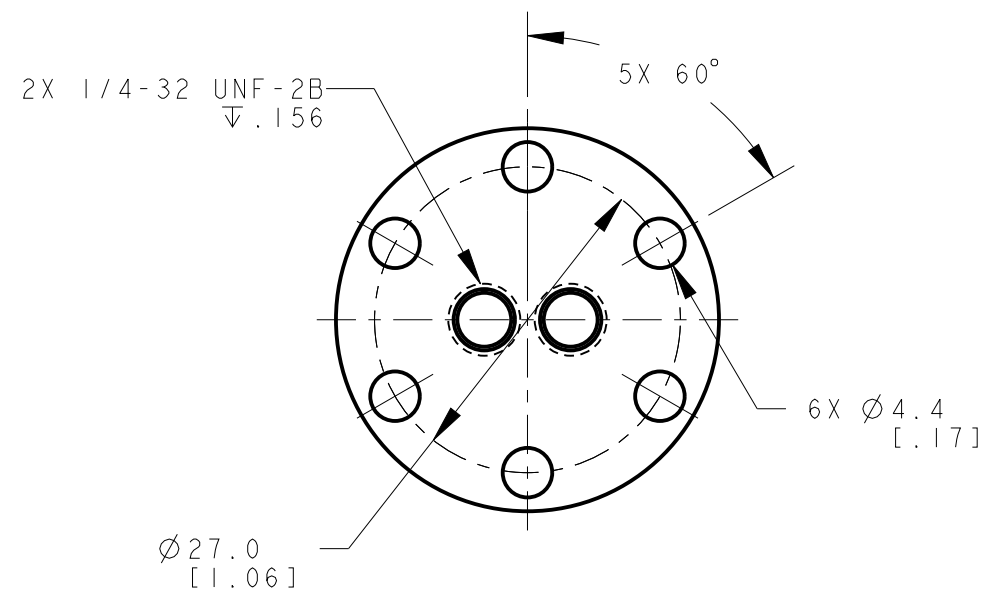


NOTES:

1. This assembly requires the use of an adaptor for either fiber optics or the Banner Mini-Beam. Use model VFT-SF.13TS for interfacing Mini-Beams directly to feed through. Both adaptors are packaged in pairs. To install, simply screw adaptors into flange and gently tighten with a wrench. DO NOT OVER TIGHTEN.
2. Viton o-rings (durometer 75 Shore A) and mounting hardware are supplied with this assembly.

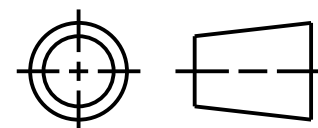



ISOMETRIC VIEWS  
SCALE 1:1

- NOTES:
1. ALL DIMENSIONS ARE MILLIMETERS [INCHES] UNLESS OTHERWISE NOTED.
  2. REFER TO "www.bannerengineering.com" FOR ADDITIONAL DATA AND SPECIFICATIONS.

This drawing is the property of BANNER ENGINEERING CORP. Any use or reproduction, in any form, without prior written permission of Banner is prohibited.  
© 2015 Banner Engineering Corp.

THIRD ANGLE PROJECTION



		BANNER ENGINEERING CORP	
		www.bannerengineering.com	
TITLE			
VFT - 1.3MVSA			
SIZE B	DRAWING NO. 193321		REV. A
SCALE 3:2		SHEET 1 OF 1	