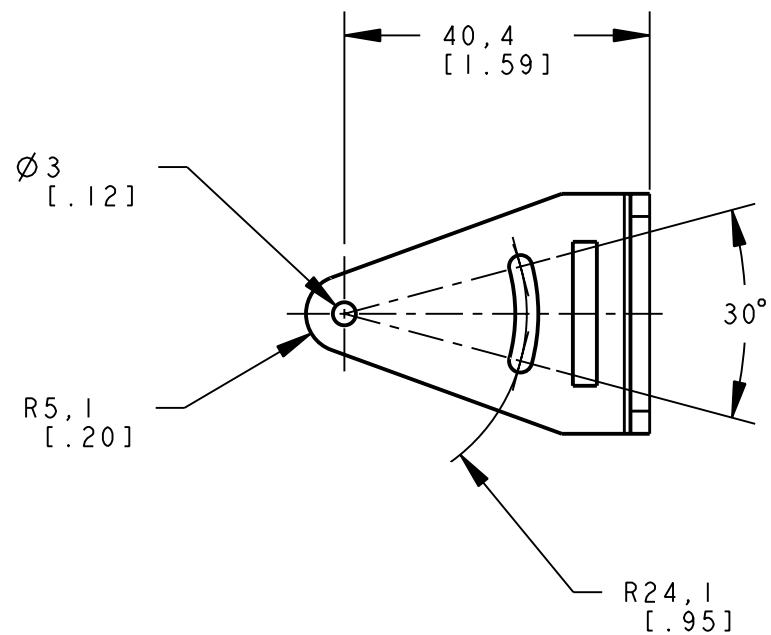


8 7 6 5 4 3 2 1

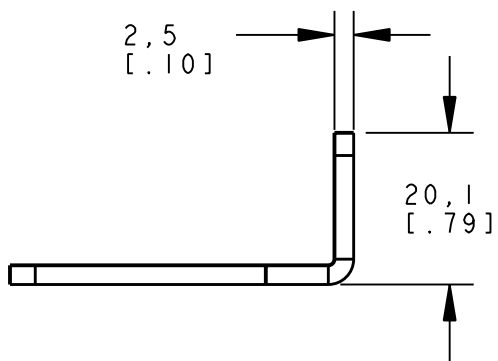
D



C

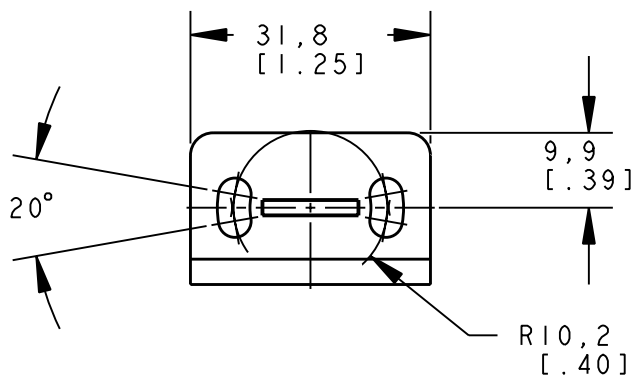


B



A

NOTES:
1. ALL DIMENSIONS ARE MILLIMETERS [INCHES] UNLESS OTHERWISE NOTED.



20°



8 7 6 5 4 3 2 1

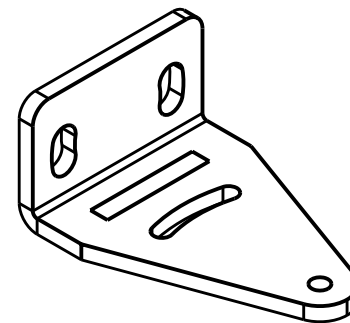
D

C



B

A



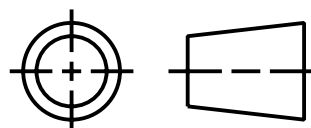
ISOMETRIC VIEW
SCALE 1:1

This drawing is the property
of BANNER ENGINEERING CORP.
and is proprietary in general
and in detail. Its contents
shall not be revealed to
outside parties without
written consent of BANNER.



BANNER ENGINEERING CORP.
P.O. BOX 9414
MINNEAPOLIS, MN 55440

THIRD ANGLE PROJECTION



TITLE

SMB19
WEB CAD DRAWINGS 2D/3D

SIZE
B

DRAWING NO.
156798

REV.
A

SCALE
1:1

SHEET
1 OF 1

PRO/E