

FEATURES

40W DC Input Constant Current with Optional Dimming LSCCx040 Series

- High Efficiency
- IP67
- RoHS Compliant
- Certified to CE
- Optional Dimming



SPECIFICATIONS

Model #	Output Current	Output Voltage	Output Power	No Load Output Voltage $\pm 5\%$	Ripple & Noise (3)
LSCCx040S045SS	450mA	53~89V	40W	94V	0.32V

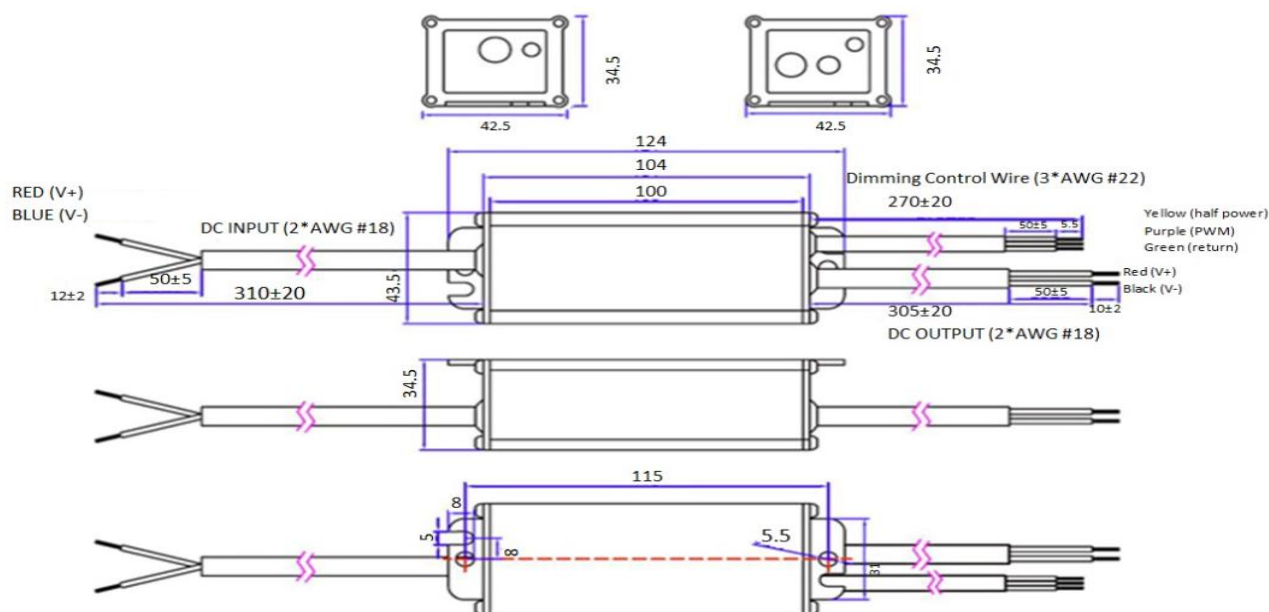
Output	Set-up Delay Time		<0.25s	
	Line Regulation		3%	
	Load Regulation		5%	
Input	Voltage		10~30V	
	Efficiency (2)		12V 90% / 24V 93%	
	Inrush Current		5.6 A Cold start, Vin=12V, Po=40W	
	DC	12V	3.9 A Full load, Vin=12V, Po=40W	
	Current	24V	1.9 A Full load, Vin=24V, Po=40W	
Dimming	Input Voltage		0~10V	Purple Wire
	Input Current		10mA	Pulse width 0% means connecting the 0~10V wire to ground
	Pulse Width		0~100%	
Protections	Over Voltage		1.3Vo ±5% floating deviation	
			Protection type: Latch mode, recycle AC after resolving problem.	
	Short Circuit		Protection type: Latch mode, recycle AC after resolving problem.	
Environment	Temperature Range		Operational	-35°C ~+50°C
			Storage	-40°C~+85°C
	Humidity		Operational	10~100% RH non-condensing
			Storage	5~100% RH
Others	MTBF		100,000 hours	
	Life Time		60,000 hours	
	Dimensions		(L*W*H) 104*43.5*34.5mm 4.09*1.71*1.36 Inches	
	Weight		315g	



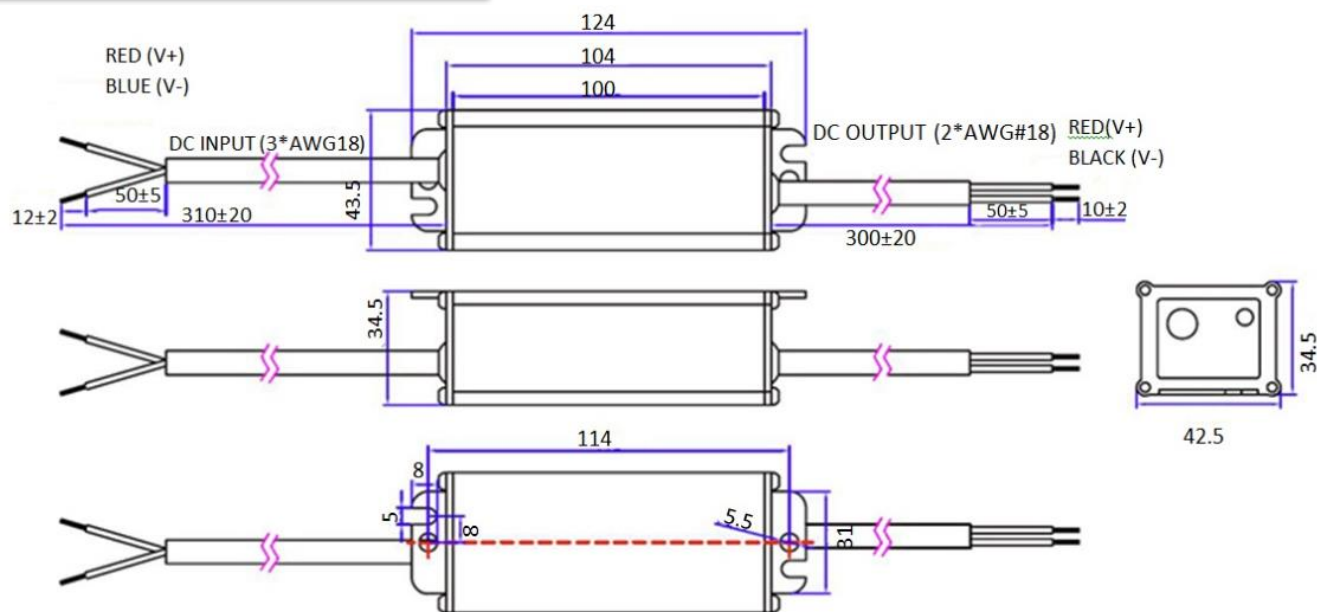
Notes:

1. All specifications are typical at 25°C unless otherwise stated.
2. The "Efficiency" values are measured at full load, after the unit is thermally stabilized, otherwise they will be lower about 1%.
3. The "Ripple & Noise" values are measured by 20MHz bandwidth oscilloscope and the output paralleled a 0.1uF ceramic capacitor and a 10uF electrolytic capacitor.

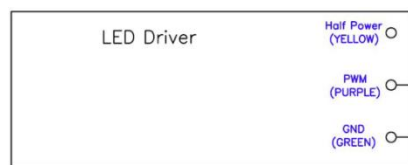
Mechanical Specifications



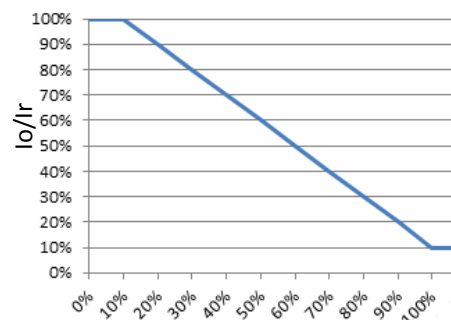
Non Dimming Mechanical Specifications



PWM Dimming



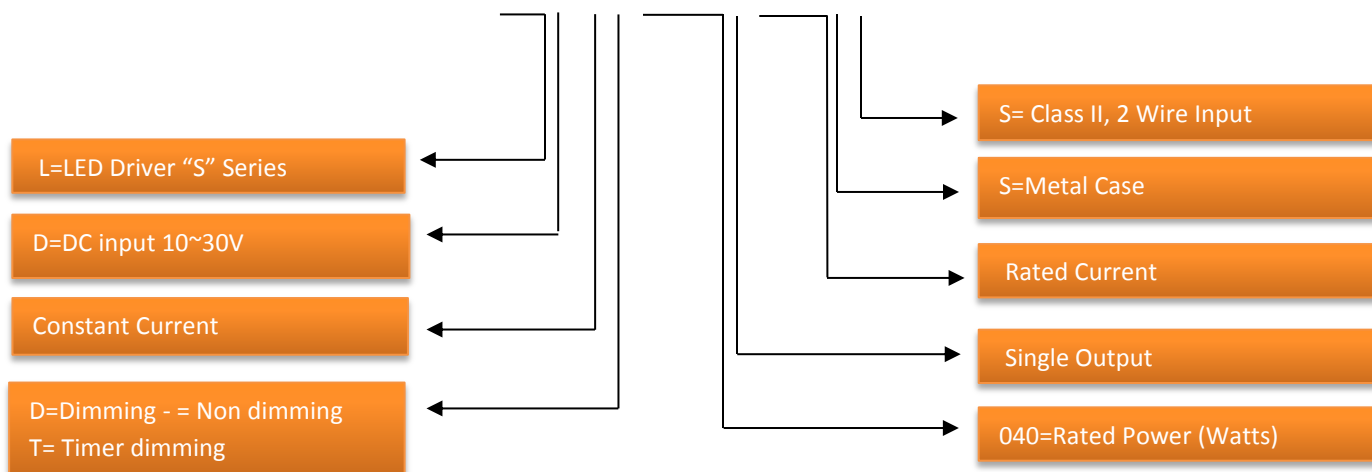
PWM Dimming:
Pulse: Hi=5V Low=2V
Duty: 10-100% Fsw: 1-2KHz



Duty cycle

PART NUMBER SCHEME

LSDC_x040S045SS



SPECIFICATIONS ARE SUBJECT TO CHANGE WITHOUT NOTICE AUTEC IS NOT RESPONSIBLE FOR ISSUES ARISING FROM ERRORS OR OMMISIONS

