

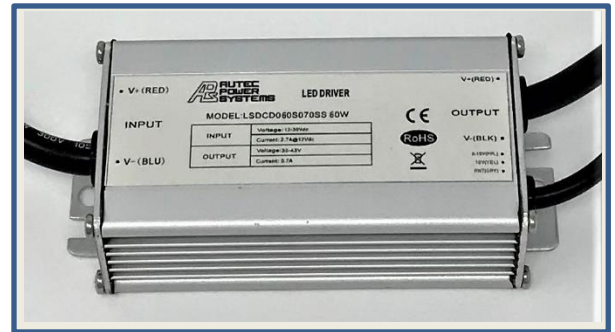
■ Features

- Power Rating: 60W
- Input Voltage: 10~30Vdc
- Constant current design
- Output current(640mA-700mA)
- Efficiency up to 93%
- Dimmable with 0-10V dimming (optional)
- OVP and SCP
- Potted, watertight

■ Application

- Indoor or outdoor lights

■ Model List*(See part number scheme for model number details)



Model Number	Input Voltage Range	Output Power	Output Voltage	Output Current Min.	Output Current Max.	Efficiency	Certification
LSDC-060S064SS	10~30Vdc	60W	42~96V	640mA	640mA	90% @12V 93% @24V	CE
LSDCD060S064SS	10~30Vdc	60W	42~96V	640mA	640mA	90% @12V 93% @24V	CE
LSDC-064S070SS	10~30Vdc	60W	52~86V	700mA	700mA	90% @12V 93% @24V	CE
LSDCD064S070SS	10~30Vdc	60W	52~86V	700mA	700mA	90% @12V 93% @24V	CE

*(-=No dimming/D=Dimming)

NOTE: All Applications require an In-Line fuse on the input and to be installed by the user.

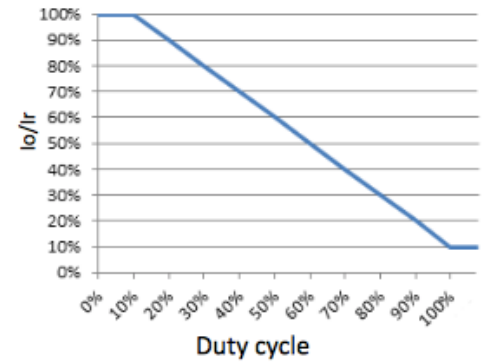
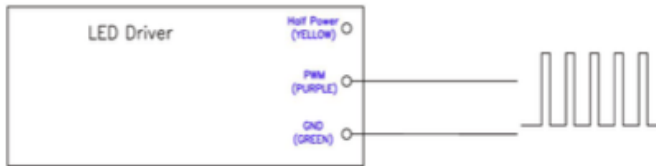
■ Technical Data

Input voltage range	10~30Vdc
Max input current	5.6A @full load, Vin=12V, Po=60W 2.7A @full load, Vin=24V, Po=60W
Load Regulation	5%
Line Regulation	3%
Turn-on Delay Time	< 0.25s
Ripple & Noise (pk-pk)	0.32, 0.34
Protection	Over voltage protection: 1.3 Vo, ±% floating design. Latch mode. Power supply shall return to normal operation only after the power is turned on again. Short Circuit Protection. Hiccup mode, recovers automatically after fault condition is removed.
Operating temperature	-35 ~ 50°C
Storage temperature	-40 ~ 85°C
Humidity	Operational: 10~100% RH non-condensing Storage: 5~100% RH
MTBF	100,000 hours
Life rating	60,000 hours
Length (L)	4.09" (104mm)
Width (W)	1.71" (43.5mm)
Height (H)	1.36" (34.5mm)

Notes:

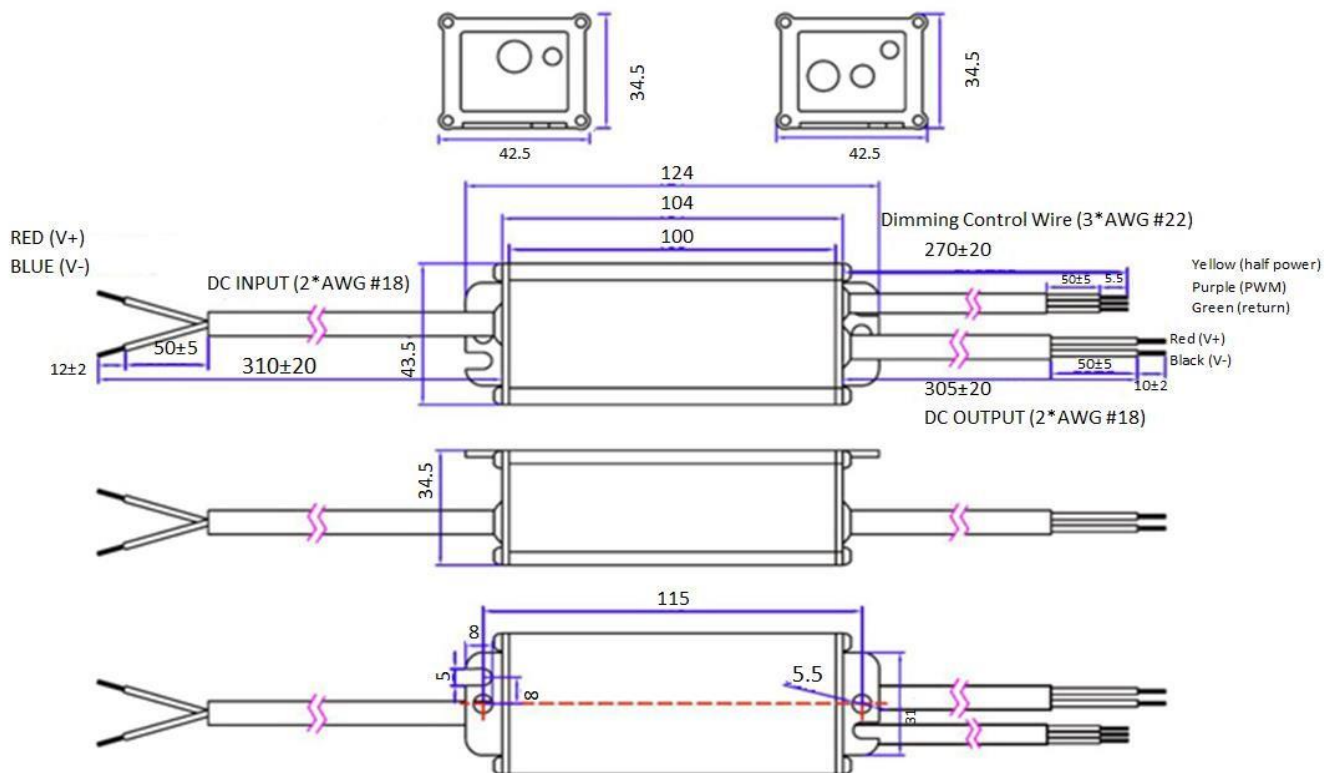
1. All parameters NOT specifically mentioned are measured at 24Vdc input, rated load and 25°C of ambient temperature.
2. Ripple & noise are measured at 20MHz of bandwidth by using a 12" twisted-pair wire terminated with 0.1uF & 47uF parallel capacitors.
3. Tolerance: includes set up tolerance, line regulation, & load regulation.
4. Derating may be needed under low input voltages. Please check the static characteristic for details.
5. Suitable for indoor or outdoor use without exposure to direct sunlight. Avoid exposure or immersion in water exceeding the IP67 rating.
6. The driver (PSU) start-up time is measured from initial cold start.
7. The driver (PSU) is considered a component that will be operated as part of a finished lighting assembly. The manufacturer of the finished lighting assembly must ensure EMC Directive compliance for the completed assembly.
8. Direct connection of the driver (PSU) to the LED lights is suggested. Not suitable for use in connecting additional drivers(PSU's).
9. To fulfill the requirements of the latest ERP regulations for lighting fixtures, this LED driver(PSU) can only be used with a switch; Not for permanent direct connection to AC main power.

■ Dimming Character

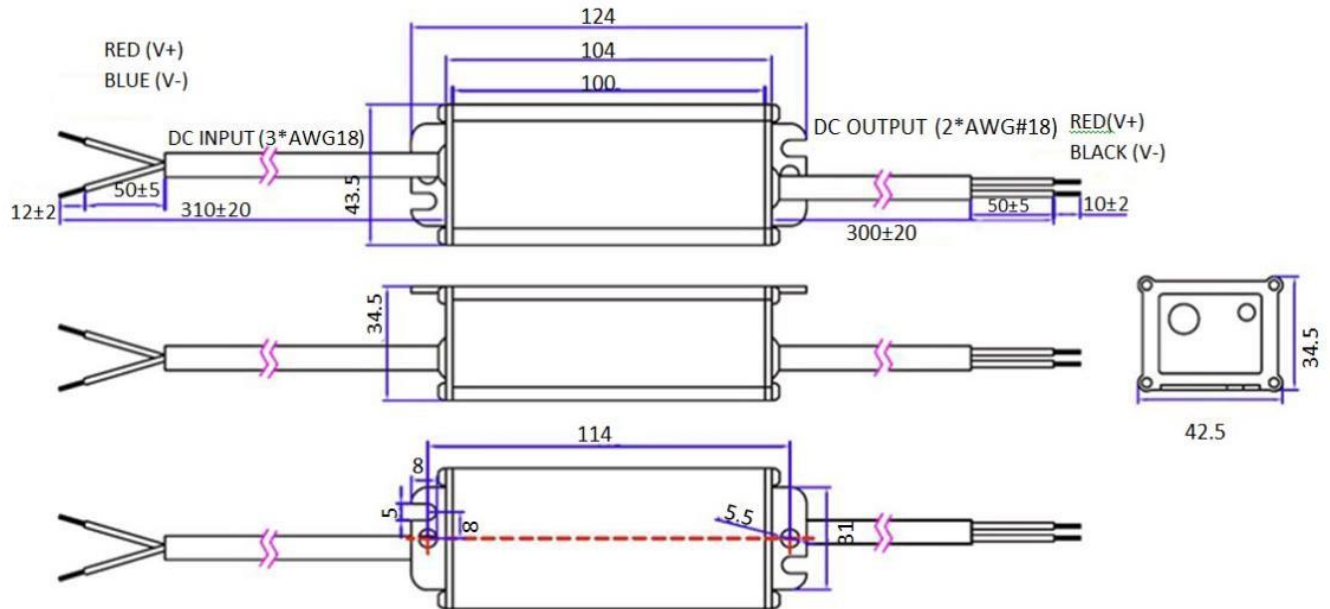


PWM Dimming:
 Pulse: High=5V, Low=2V
 Duty: 10-100% Fsw: 1-2KHz

■ Dimming Wiring Diagram



■ **Non-Dimming Wiring Diagram**



*Requires a slow blow in-line fuse and housing on the input cable, contact the factory.

Part Number Scheme

LS D C D 060 S XXX S S

LS=LED Driver Series

D=DC/DC Input Voltage 10-30Vdc

C=Constant Current

D=Dimmable

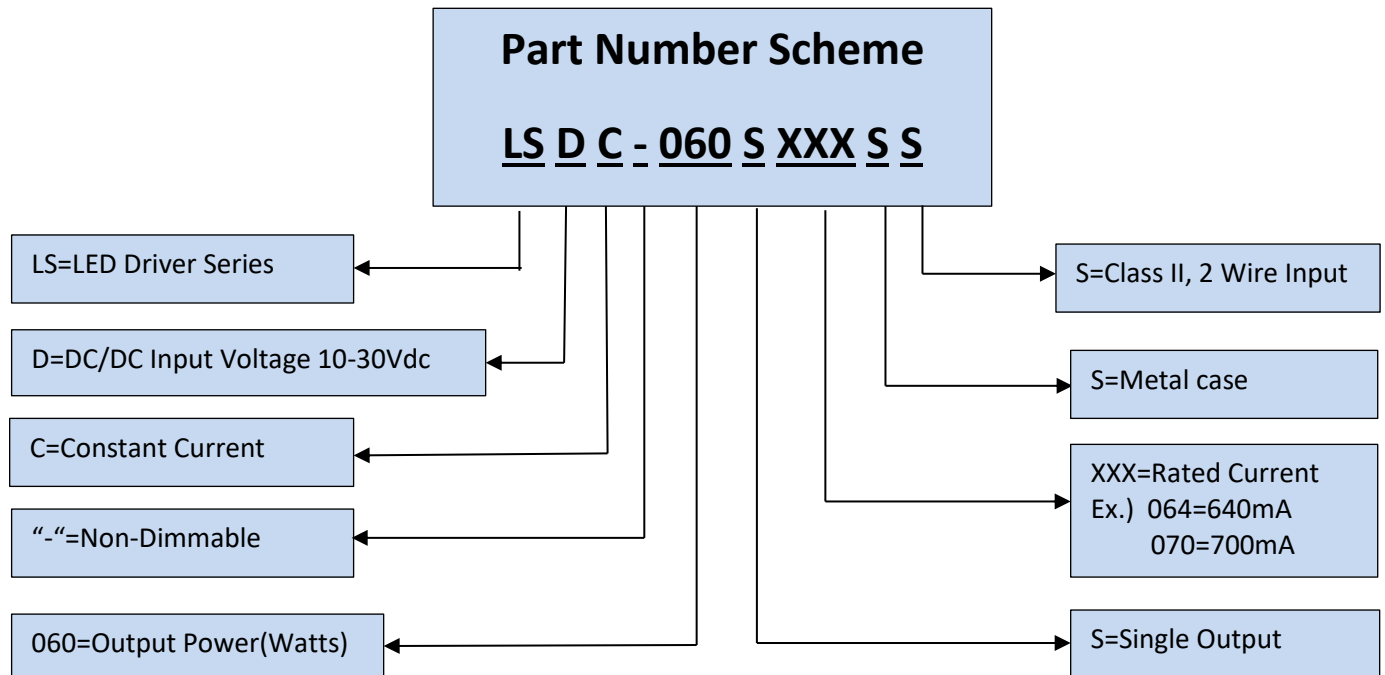
060=Output Power(Watts)

S=Class II, 2 Wire Input

S=Metal case

XXX=Rated Current
Ex.) 064=640mA
070=700mA

S=Single Output



***Product images are for illustrative purposes only and may vary from actual design.**

***Specifications are subject to change without notice. Autec is not responsible for issues arising from errors or omissions.**