

■ Features

- Power Rating: 350W
- Input Voltage: 277-480Vac
- Constant current and constant voltage hybrid design
- Adjustable Output current (600mA-14580mA)
- Efficiency to 94%
- 0-10V dimming/PWM/Timer Dimming, Dim-to-off
- Programmable with Near Field Communication technology without power to the driver
- 12V 400mA Aux power
- UL Class "P", and UL Class 2 outputs/ Type HL
- OVP, SCP, OTP, & Over Current Protection
- Tc=90C
- IP67
- 5-year warranty
- Surge Protection: Diff: 6kV, Common: 10kV



*Product images are for illustrative purposes only and may vary from actual design.

■ Application

- Indoor and Outdoor applications

■ Model List*(See part number scheme for model number details)

Model Number	Input Voltage Range	Output Power	Programmable Output Voltage	Programmable Output Current Region	Efficiency 277V	Certification
L2HCP350S1458ST-XYZ	277-480Vac	350W	24-36V	5.83-14.58A	93%	UL/cUL
L2HCP350S972ST-XYZ	277-480Vac	350W	36-54V	3.89-9.72A	93%	UL/cUL
L2HCP350S648ST-XYZ	277-480Vac	350W	54-80V	2.59-6.48A	93%	UL/cUL
L2HCP350S437ST-XYZ	277-480Vac	350W	80-140V	1.75-4.37A	93%	UL/cUL
L2HCP350S250ST-XYZ	277-480Vac	350W	140-233V	1-2.5A	94%	UL/cUL
L2HCP350S150ST-XYZ	277-480Vac	350W	233-375V	0.6-1.5A	94%	UL/cUL

Ordering options	
XY= Programmable	Z=Dimming
FC=Near Field Communication	D=DALI Dimming
	B=BLE Dimming

■ Technical Data

Input voltage range	277-480Vac
Frequency	47-63Hz
Power factor	0.95
Output voltage	24-375V

Technical Sales / Customer Service: +1-818-338-7788 • Email: sales@autec.com

31328 Via Colinas Suite 102 • Westlake Village, CA 91362 USA • www.autec.com

May 22, 2020

■ Technical Data(cont.)

Output power	350W
Max input current	1.1A @347Vac
Efficiency	93-94%
Line Regulation	± 0.3%
Load Regulation	± 1%
Inrush Current	65A @480Vac cold start +25°C
Dimming	0~10V, Dim-to-off option, PWM, Timing
THD	< 20%
Current Programmable	Yes
Output Current Adjustable Range	600-15580mA
Over Current Protection	95%-108%Protection type: Constant current limiting, recovers automatically after fault condition is removed
Short Current Protection	Hiccup mode, recovers automatically after fault condition is removed
Over Voltage Protection	1.3Vo, Protection type: Hiccup mode, recovers automatically after fault condition is removed
Over Temp. Protection	Hiccup mode, recovers automatically after fault condition is removed
Operating Temperature	-35~+60°C
Max T-case Temp.	90°C
Operating Humidity	10 ~ 100% RH non-condensing
Storage Temp., Humidity	-40 ~+85°C, 5 ~ 100% RH
Vibration	10~500Hz, 5G 12min./1cycle, period for 72min. each along X, Y, Z axes
MTBF	>200kHrs to MIL-HDBK-217 @ 25°C
Dimensions	262x84.1x39mm
Packing	12pcs/carton
Weight	1.6kg

■ Safety Compliance

Safety Standards	UL8750, UL935, UL1012, CSA-C22.2 No.107.1, EN61347-1, EN61347-2-13
Withstand Voltage	I/P – O/P: 3.75kVAC
Isolation Resistance	I/P – O/P: 100M Ohms / 500VDC /25°C / 70% RH
EMC Emission	Compliance to EN55015, EN61000-3-2 Class C (≥60% load); EN61000-3-3
EMC Immunity	Compliance to EN61000-4-2,3,4,5,6,8,11; EN61547, EN55024

Disclaimer:

Autec Power Systems' (Autec) LED Drivers are Hi-Pot tested during the manufacturing process. Autec assumes no responsibility for secondary Hi-Pot testing at customer location or designated production line(s). Should customer require further Hi-Pot testing, at their own production line, following assembly of the LED Driver into the customer's assembled fixture, Autec requests advance notice. This request must be communicated to Autec in a timely manner and is recommended to be requested at time of issuing each purchase order.

Technical Sales / Customer Service: +1-818-338-7788 • Email: sales@autec.com

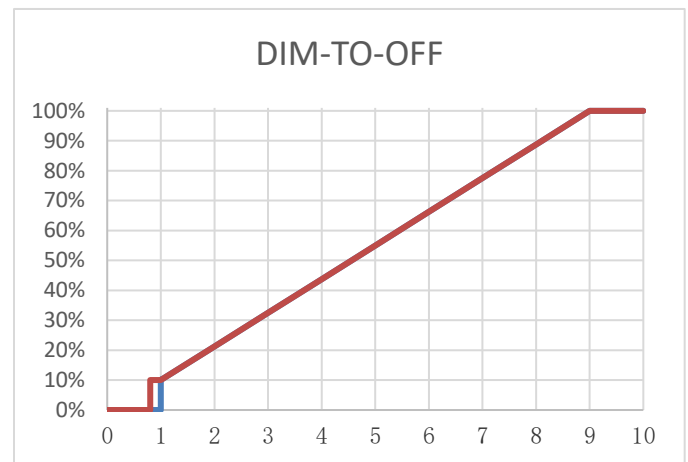
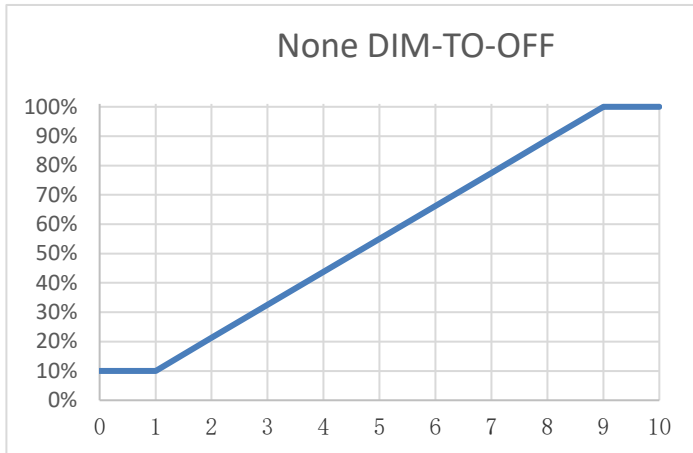
31328 Via Colinas Suite 102 • Westlake Village, CA 91362 USA • www.autec.com

May 22, 2020

2 / 5

■ Dimming

0-10V Analog Dimming



GND	Grey
Dimming wire 0-10V & PWM	Purple
12V AUX	Yellow
Input Dimming Voltage	0-10V
DIM+ Source Current	0.5mA
12V AUX Source Current	400mA
PWM Frequency Range	0.5-3KHZ
PWM high level	10V

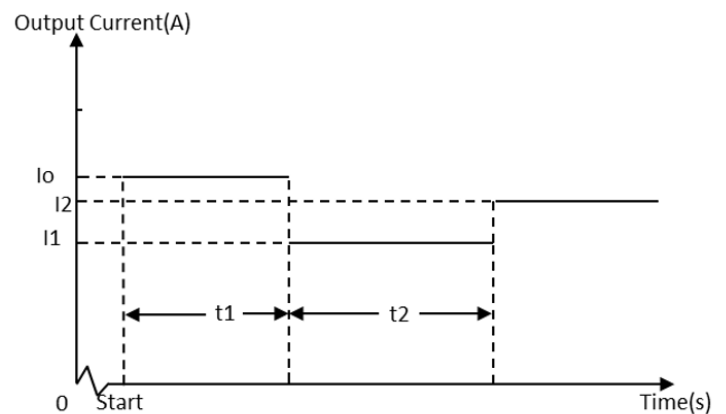
NOTE:

1. I_o is actual output current and I_r is rated current without dimming control.
2. For the driver to operate properly, the load voltage must be in the working voltage range.
3. We have DIM-TO-OFF option, which can be programmed by the programmer.
4. Maximum input voltage for the dimming wire is 12V.
5. AUX wire is only for source, can't connect to other voltage source.

■ TIMER Dimming

NOTE:

1. The dimming time can be programmed by the programmer.
2. The time of t_1 and t_2 can be set by the programmer.(0.5h step)
3. The value of I_1 and I_2 can be set by the programmer.
4. Changing the current from I_1 to I_2 may take a few min.



■ Near Field Communication Controller



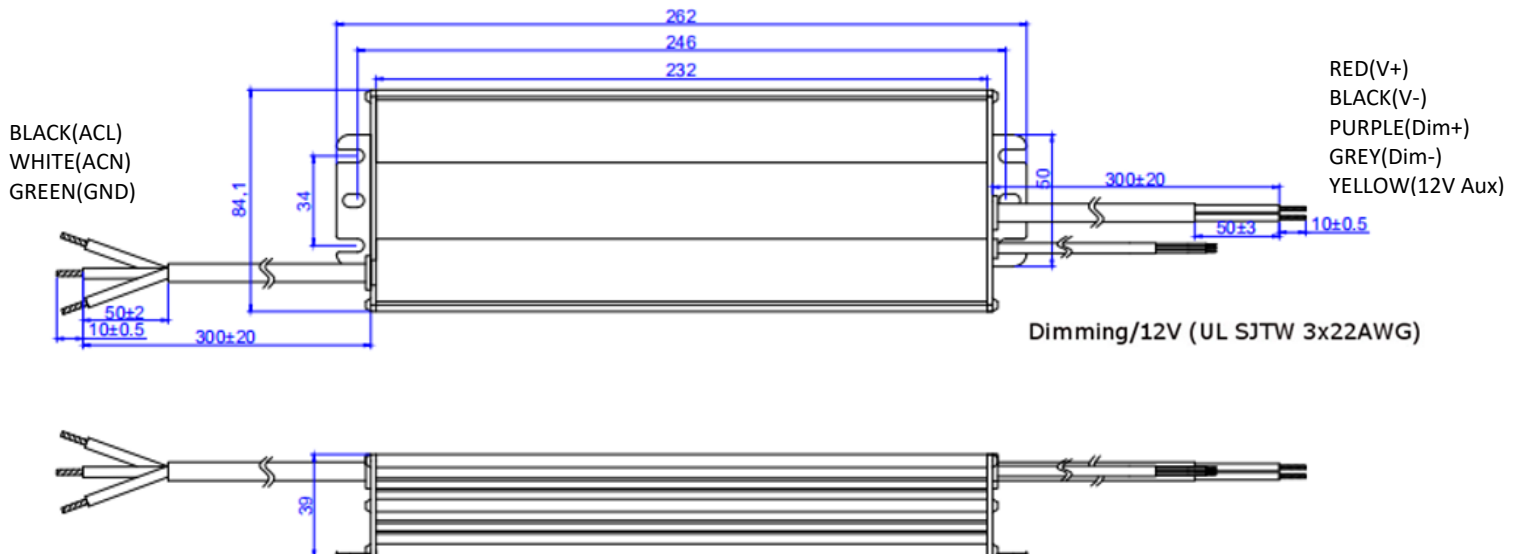
NOTE:

1. The Near Field Communication controller can program the output current, voltage and timer delays.
2. The Near Field Communication programming is a non-contact process, therefore much safer compared to traditional programming methods.
3. Power devices can be programmed without AC power applied to the driver.

■ Mechanical Design

AC Input (UL STW 3x18AWG)

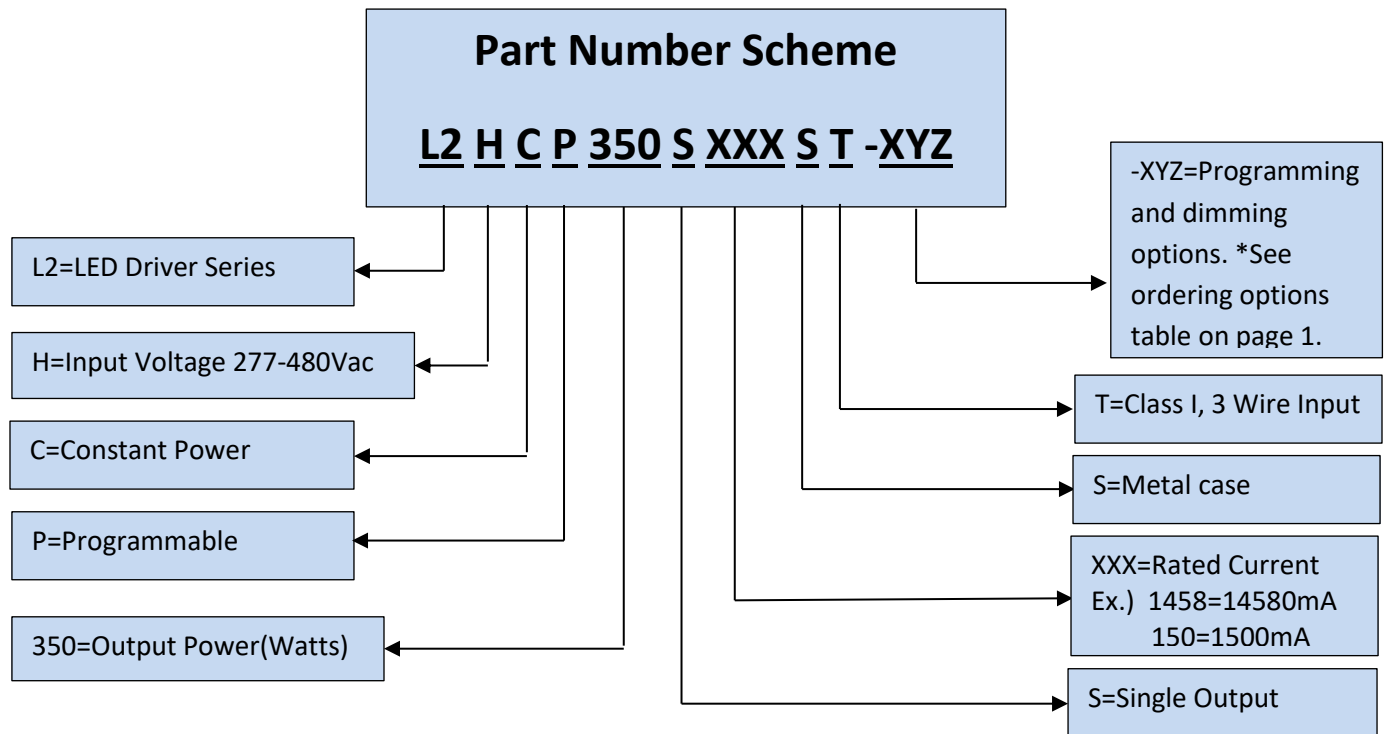
DC Output (UL SJTW 2x14AWG)



Technical Sales / Customer Service: +1-818-338-7788 • Email: sales@autec.com

31328 Via Colinas Suite 102 • Westlake Village, CA 91362 USA • www.autec.com

May 22, 2020



***Product images are for illustrative purposes only and may vary from actual design.**

***Specifications are subject to change without notice. Autec is not responsible for issues arising from errors or omissions.**

Technical Sales / Customer Service: +1-818-338-7788 • Email: sales@autec.com

31328 Via Colinas Suite 102 • Westlake Village, CA 91362 USA • www.autec.com

May 22, 2020