

OPTOTRONIC®



Phase-Cut Dimmable Constant Current LED Power Supplies



OPTOTRONIC phase-cut dimmable series are high efficiency, compact, constant current, LED power supplies. They are available in a wide range of pre-configured output currents between 250mA to 700mA.

OPTOTRONIC phase-cut dimmable power supplies set the industry standard for smooth and flicker-free dimming. They are compatible with both leading edge (incandescent) and trailing edge (Electronic Low Voltage - ELV) phase-cut type dimmers.

Application Information

Applications

- Ceiling mount
- Downlights
- Track lighting
- Wall sconces

Key Features & Benefits

- Wide selection of pre-configured drive currents between 250mA and 700mA
- Compact form factor, ideal for sleek fixture designs
- Broad ambient operating range for use in extreme application conditions
- High power factor and efficiency
- Available in two housing styles - F-Style and J-Style with PEM studs
- Short circuit, open circuit, overload and overheat protection for sustained performance
- Integrated phase-cut dimming – compatible with both Leading Edge (incandescent) and Trailing Edge (ELV) phase-cut type dimmers at 120V
- UL Class 2 output for safe operation

Product Offering

Maximum Output Power	Housing Type	Output Current (mA)
20	F-Style	350
	J-Style	
20	F-Style	400
	J-Style	
20	F-Style	500
	J-Style	
20	F-Style	700
	J-Style	
18	F-Style	600
	J-Style	
15	F-Style	500
	J-Style	
13	F-Style	250
	J-Style	
12	F-Style	400
	J-Style	

Specifications and Certifications



UL8750 Class 2 Recognized



CSA Approved



RoHS Compliant

FCC 47CFR Part 15 Class B Compliant



Specification Data

Catalog #	Type
Project	
Comments	
Prepared by	

Electrical Specifications

Nominal Input Voltage (VAC)	Nominal Input Current (A)	THD	Power Factor	Efficiency	Load Regulation	Dimming Mode	Dimming Range	Dimming Control	Location Rating	UL File #
120-277	0.25@120V 0.1@277V	<20% at 120V <35% at 277V	>0.9	>83%	<5%	Current Reduction	10 - 100%	Phase Cut @ 120V	Dry & Damp	E320395

Ordering Information

Item Number	Ordering Abbreviation	Max. Output Power (W)	Output Current (mA)	Output Voltage Range (Voc)	Housing Type
79423	OT20W/350C/UNV/PC	20	350	28-55	F-Style
79428	OT20W/350C/UNV/PC/J	20	350	28-55	J-Style
79422	OT20W/400C/UNV/PC	20	400	28-50	F-Style
79427	OT20W/400C/UNV/PC/J	20	400	28-50	J-Style
79421	OT20W/500C/UNV/PC	20	500	28-40	F-Style
79426	OT20W/500C/UNV/PC/J	20	500	28-40	J-Style
79420	OT20W/700C/UNV/PC	20	700	16-29	F-Style
79425	OT20W/700C/UNV/PC/J	20	700	16-29	J-Style
79429	OT18W/600C/UNV/PC	18	600	20-30	F-Style
79424	OT18W/600C/UNV/PC/J	18	600	20-30	J-Style
79419	OT15W/500C/UNV/PC	15	500	18-30	F-Style
79418	OT15W/500C/UNV/PC/J	15	500	18-30	J-Style
79412	OT13W/250C/UNV/PC	13	250	28-55	F-Style
79413	OT13W/250C/UNV/PC/J	13	250	28-55	J-Style
79375	OT12W/400C/UNV/PC	12	400	18-30	F-Style
79374	OT12W/400C/UNV/PC/J	12	400	18-30	J-Style

Ordering Guide

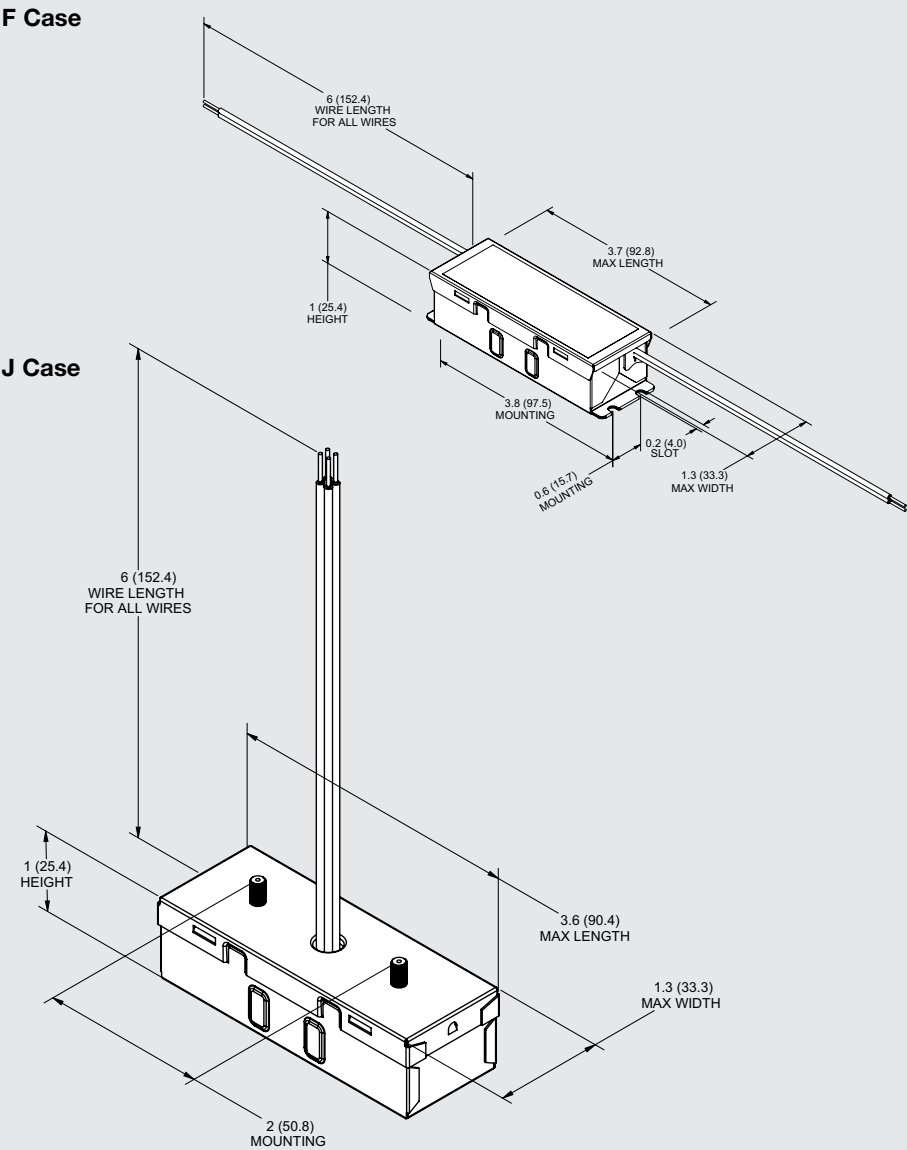
OT	20W	/	700C	/	UNV	/	PC	/	J
OPTOTRONIC®	Wattage		Output Current		Input Voltage (120-277V)		Phase-Cut Dimmable		J-Style Housing

Minimum and Maximum Ratings

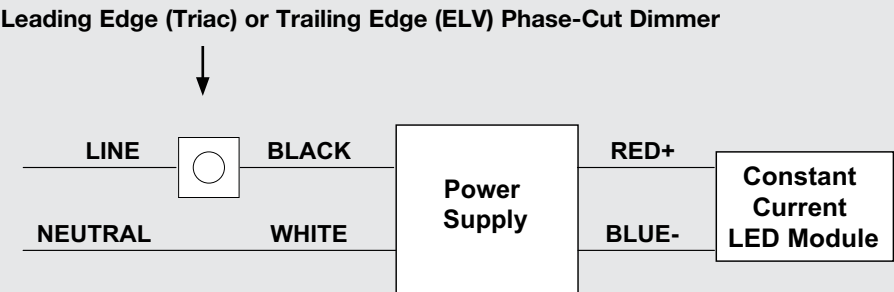
Parameter	Values
Input Voltage and Frequency	108-305 VAC & 50/60 Hz
Max. Case Temperature (Tc point)	90°C (194°F)
Max. Case Temperature for 5 Year Life and Warranty	75°C (167°F)
Operating Temperature	-40 to +50°C (-40 to +122°F)
Storage Temperature	70°C (158°F)
Humidity (Non-Condensing)	85% Max

Assembly Diagram

Packaging:
Quantity: 25 pieces/case
Weight: 0.39 lbs each
9.8 lbs/case
Wiring: Leads only
Input: 6" (18AWG)
Black and White wires
Output: 6" (18AWG)
Red (+) and Blue (-) wires



Wiring Diagram



Warranty

OPTOTRONIC® products are covered by our LED Module, OPTOTRONIC Power Supply or control Warranty. For additional details, refer to the latest version of the warranty (LED089) available at www.osram-americas.com/LED.

OSRAM

Americas Headquarters

OSRAM SYLVANIA Inc.

100 Endicott Street

Danvers, MA 01923 USA

Phone 1-800-LIGHTBULB (1-800-544-4828)

www.osram-americas.com

OSRAM, OPTOTRONIC and LED CREATING TOMORROW are registered trademarks of OSRAM GmbH.
Specifications subject to change without notice.

© 2014 OSRAM

